

Product datasheet for **RC207055**

C17orf46 (SPATA32) (NM_152343) Human Tagged ORF Clone

Product data:

Product Type:	Expression Plasmids
Product Name:	C17orf46 (SPATA32) (NM_152343) Human Tagged ORF Clone
Tag:	Myc-DDK
Symbol:	C17orf46
Synonyms:	AEP2; C17orf46; TEX34; VAD1.2
Mammalian Cell Selection:	Neomycin
Vector:	pCMV6-Entry (PS100001)
E. coli Selection:	Kanamycin (25 ug/mL)
ORF Nucleotide Sequence:	>RC207055 ORF sequence Red=Cloning site Blue=ORF Green=Tags(s)

TTTTGTAATACGACTCACTATAGGGCGGCCGGAATTCGTCGACTGGATCCGGTACCGAGGAGATCTGCC
GCC**CGATCGC**C

ATGGGGGTGACAGGTGCCCATGGATTTCCATGCTGCGGCAAAGGGTCAGTGGAGTTGCAGAGATGCGAG
ATGACTTAAGTCAACACCAGATACAAGAGGAACAGGAGCTGGAGGCAGACATGCTAGAGCAGAAGCCCCA
ACTCCAAGTGGACCTGGACCTGGACCCAGACCCAGACCCAGACCCAGAAGTGGAGATCGGACAGGTGCCG
GCTTTACTGGAGTCAGAGCTATACCCAGCCCTCAAGCTTGAAGCTGAGCTGGACACGGAAGCCAACCTCGA
ACGAGGAGTCTGACTTTGAAGAACCATGCAGCTGGTATGCAAGATAGAGTCCGTCCACTCCAACATGGG
GCTGCCACGCCACAGACCTTCAGACCGTGGAGTCTGAATTCAAACTGCCGGAGTTTCACGGAGGAGAAC
CACATGTCTGCCTGCCATCACTCCATCAGTGCAGACCTCCAAGCACCTCTTCTGGGCAAACAAGCTCA
TCCAGGCCTCAGAGCACAGCCTGCAGCGGGCCATCAACATGCAGCTCAACAATGGCAGCGCAGGCCAGCC
CATCAGATCCCCGCTCCGGGAGGCCATCCCCACCAACGCCCTGTGCTCCGAGGAGCAGCTCCAGATCCCT
GATGCCCACTCAGCTCCTCAACCACAAGCTCCAGGCACCAAGCCCCCTCCTGTCTCAGATCTCCCGC
CACCCATTGACCTGACAGAGCTAATCACCTTTGCATCTTCCCTGGCCATGGCCTCCTCCAGCAGGATGGA
CCTGCCAGTTTGAACACATGATGAAAGCTCCACCCAGGAGGCTCTGGAGCCTCCACAGAGCCCTC
CTGACCACTGTGGAGGAGCGAGAGCCAGAAAATCACGCAGAGACCCTGCCAGAGAAACCAGCGAAGCCA
GAGCACCCTGAAATCTTGGAGTCAGGAAGACAAGAACTTCGCTCAATCTTACTTTGACTTCAGCAAGCC
GGGGATCAAGAGGGCCACCATCAAGGGCAAATCCAGTTCTCCAGCCACCAGCCACGTCCCTCTGCTG
CAGGGAAGCAAGGAAGACTCAGTGCCGCCAGGAAAAGAGAAAGAGAATCCATTATTGGTAAAAATCCATT
TTAAGCTGTCAGCCCCACAATCCAGAGAAA

ACGCGTACGCGGCCGCTCGAGCAGAAACTCATCTCAGAAGAGGATCTGGCAGCAATGATATCCTGGATT
ACAAGGATGACGACGATAAGGTTTAA



[View online »](#)

Protein Sequence: >RC207055 protein sequence
Red=Cloning site Green=Tags(s)

```
MGVTGAHGFPCCGKGSVEVAEMRDDLSQHQIQEEQELEADMLEQKPKLQVDLDDPDPDPELEIGQVP
ALLESELYPALKLEAELDTEANSNEESDFEEMQLVCKIESVHNSMGLPTPQTFRPWSLNSNCRSFTEEN
HMSACHHSISAQTSKHLFWANKLIQASEHSLQRAINMQLNNGSAGQPIRSPLREAIPTNALCSEEQLQIP
DAHSAPPTTSSQAPSPLSSDLPPPIDLTELITFASLLAMASSSRMDLPSLEHMMKAPPQEALPSTEPL
LTTVEEREPENHAETLPEKPREARAPLKSWSEDKNFAQSYDFDFSKPGIKRATIKGQIQLLQPPATSPLL
QGSKEDSVPPGKEKENPLLVKIHFKLSAPTIPEK
```

TRTRPLEQKLISEEDLAANDILDYKDDDDKV

Chromatograms: https://cdn.origene.com/chromatograms/mk6331_c05.zip

Restriction Sites: SgfI-MluI

Cloning Scheme:



ACCN: NM_152343

ORF Size: 1152 bp

OTI Disclaimer: The molecular sequence of this clone aligns with the gene accession number as a point of reference only. However, individual transcript sequences of the same gene can differ through naturally occurring variations (e.g. polymorphisms), each with its own valid existence. This clone is substantially in agreement with the reference, but a complete review of all prevailing variants is recommended prior to use. [More info](#)

OTI Annotation: This clone was engineered to express the complete ORF with an expression tag. Expression varies depending on the nature of the gene.

Components: The ORF clone is ion-exchange column purified and shipped in a 2D barcoded Matrix tube containing 10ug of transfection-ready, dried plasmid DNA (reconstitute with 100 ul of water).

- Reconstitution Method:**
1. Centrifuge at 5,000xg for 5min.
 2. Carefully open the tube and add 100ul of sterile water to dissolve the DNA.
 3. Close the tube and incubate for 10 minutes at room temperature.
 4. Briefly vortex the tube and then do a quick spin (less than 5000xg) to concentrate the liquid at the bottom.
 5. Store the suspended plasmid at -20°C. The DNA is stable for at least one year from date of shipping when stored at -20°C.

RefSeq: [NM_152343.3](#)

RefSeq Size: 1297 bp

RefSeq ORF: 1155 bp

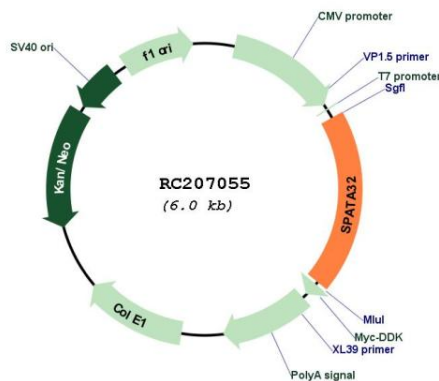
Locus ID: 124783

UniProt ID: [Q96LK8](#)

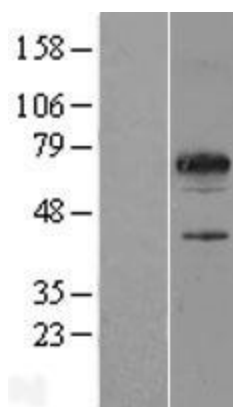
Cytogenetics: 17q21.31

MW: 42.4 kDa

Product images:



Circular map for RC207055



Western blot validation of overexpression lysate (Cat# [LY407593]) using anti-DDK antibody (Cat# [TA50011-100]). Left: Cell lysates from untransfected HEK293T cells; Right: Cell lysates from HEK293T cells transfected with RC207055 using transfection reagent MegaTran 2.0 (Cat# [TT210002]).