

Product datasheet for **RC207050**

METTL27 (NM_152559) Human Tagged ORF Clone

Product data:

Product Type: Expression Plasmids
 Product Name: METTL27 (NM_152559) Human Tagged ORF Clone
 Tag: Myc-DDK
 Symbol: METTL27
 Synonyms: WBSCR27
 Mammalian Cell Selection: Neomycin
 Vector: pCMV6-Entry (PS100001)
 E. coli Selection: Kanamycin (25 ug/mL)
 ORF Nucleotide Sequence: >RC207050 ORF sequence
 Red=Cloning site Blue=ORF Green=Tags(s)

TTTTGTAATACGACTCACTATAGGGCGCCGGGAATTCGTCGACTGGATCCGGTACCGAGGAGATCTGCC
 GCC**CGATCGCC**

ATGGCCCAGGAGGAGGTGGGAGCCTGCCGAGGTGCGGGCGGGTCAGGGCCGCGCATGGCATCCCCG
 ACCTGGCCAAAAGCTCCATTTCTATGACCGCTGGGCTCCGGACTACGACCAGGATGTGGCCACCCTGCT
 GTACCGTGGCCCCGCTCGCAGTGGACTGCCTCACACAAGCCCTCCAGGCCGCCACAGTGCCTG
 ATCCTGGACGTGGCCTGTGGCACAGGCCTAGTGGCTGCCGAGCTGCGGGCTCCAGCTTCTCCAGCTGC
 ATGGGGTGGATGGGAGCCAGGGATGCTGGAACAGGCCCGGGCCCCGGCCTCTATCAGCGCCTCAGCCT
 CTGACCCCTGGGCCAGGAGCCTCTGCCAGCCGGAAGGACCTTCGACGCGGTGCTGATAGTCGGTGCC
 CTCAGTGACGGCCAGGTGCCCTGCAATGCGATACCTGAGCTACATGTCACCAAGCCAGGTGGGCTGGTGT
 GTCTGACCACCAGGACCAACTGGTCCAACCTTCAATACAAGGAGGCTCTGGAGGCCACCCTGGACAGGCT
 GGAGCAGGCTGGGATGTGGGAAGGCCTGGTGGCCTGGCCTGTGGACCGCCTGTGGACCGCTGGGAGCTGG
 CTACCTCCGAGCTGGTGGTGGTATCCGGCATCTCTGCCAAGGATGGCTTCATCTCCGGCATTGTCTACCT
 GTACCGAAAGTGAAGGCGACCCAGTTGAGGAAG

ACGCGTACGCGGCCGCTCGAGCAGAACTCATCTCAGAAGAGGATCTGGCAGCAAATGATATCCTGGATT
 ACAAGGATGACGACGATAAGGTTTAA



[View online »](#)

Protein Sequence: >RC207050 protein sequence
 Red=Cloning site Green=Tags(s)

MAQEEGGSLPEVRARVRAAHGIPDLAQLHFYDRWAPDYDQDVATLLYRAPRLAVDCLTQALPGPPHSAL
 ILDVACGTGLVAAELRAPGFLQLHGVDSGPMLEQARAPGLYQRLSLCTLGQEPLPSPEGTDFDAVLIVGA
 LSDGQVPCNAIPELVHTKPGGLVCLTTRTNWSNLQYKEALEATLDRLEQAGMWEGLVAVPVDRLWTAGSW
 LPPSWWWYPASLPRMASSPALSTCTESGRRRPLRK

TRTRPLEQKLISEEDLAANDILDYKDDDDKV

Chromatograms: https://cdn.origene.com/chromatograms/mk6333_e06.zip

Restriction Sites: SgfI-MluI

Cloning Scheme:

Cloning sites used for ORF Shuttling:



* The last codon before the Stop codon of the ORF

ACCN: NM_152559

ORF Size: 735 bp

OTI Disclaimer: The molecular sequence of this clone aligns with the gene accession number as a point of reference only. However, individual transcript sequences of the same gene can differ through naturally occurring variations (e.g. polymorphisms), each with its own valid existence. This clone is substantially in agreement with the reference, but a complete review of all prevailing variants is recommended prior to use. [More info](#)

OTI Annotation: This clone was engineered to express the complete ORF with an expression tag. Expression varies depending on the nature of the gene.

Components: The ORF clone is ion-exchange column purified and shipped in a 2D barcoded Matrix tube containing 10ug of transfection-ready, dried plasmid DNA (reconstitute with 100 ul of water).

Reconstitution Method:

1. Centrifuge at 5,000xg for 5min.
2. Carefully open the tube and add 100ul of sterile water to dissolve the DNA.
3. Close the tube and incubate for 10 minutes at room temperature.
4. Briefly vortex the tube and then do a quick spin (less than 5000xg) to concentrate the liquid at the bottom.
5. Store the suspended plasmid at -20°C. The DNA is stable for at least one year from date of shipping when stored at -20°C.

RefSeq: [NM_152559.1](#)

RefSeq Size: 958 bp

RefSeq ORF: 738 bp

Locus ID: 155368

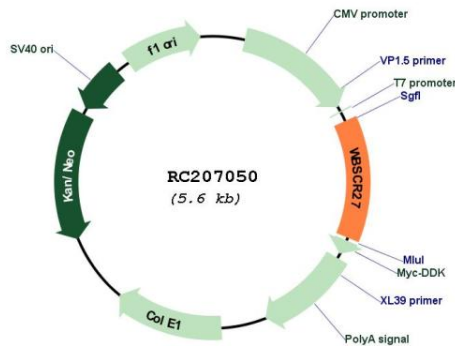
UniProt ID: [Q8N6F8](#)

Cytogenetics: 7q11.23

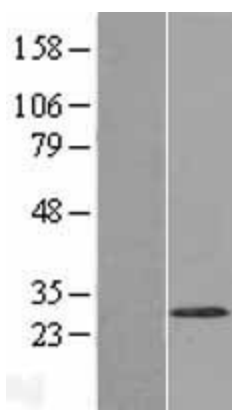
MW: 26.7 kDa

Gene Summary: This gene encodes a protein belonging to ubiE/COQ5 methyltransferase family. The gene is deleted in Williams syndrome, a multisystem developmental disorder caused by the deletion of contiguous genes at 7q11.22-q11.23. [provided by RefSeq, Jul 2008]

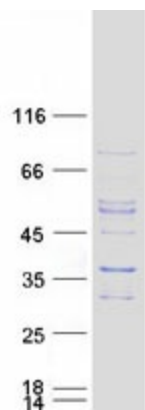
Product images:



Circular map for RC207050



Western blot validation of overexpression lysate (Cat# [LY407469]) using anti-DDK antibody (Cat# [TA50011-100]). Left: Cell lysates from untransfected HEK293T cells; Right: Cell lysates from HEK293T cells transfected with RC207050 using transfection reagent MegaTran 2.0 (Cat# [TT210002]).



Coomassie blue staining of purified METTL27 protein (Cat# [TP307050]). The protein was produced from HEK293T cells transfected with METTL27 cDNA clone (Cat# RC207050) using MegaTran 2.0 (Cat# [TT210002]).