

Product datasheet for **RC207046**

MMGT1 (NM_173470) Human Tagged ORF Clone

Product data:

Product Type: Expression Plasmids
Product Name: MMGT1 (NM_173470) Human Tagged ORF Clone
Tag: Myc-DDK
Symbol: MMGT1
Synonyms: EMC5; TMEM32
Mammalian Cell Selection: Neomycin
Vector: pCMV6-Entry (PS100001)
E. coli Selection: Kanamycin (25 ug/mL)
ORF Nucleotide Sequence: >RC207046 ORF sequence
Red=Cloning site Blue=ORF Green=Tags(s)

TTTTGTAATACGACTCACTATAGGGCGGCCGGAATTCGTCGACTGGATCCGGTACCGAGGAGATCTGCC
GCC**CGATCGCC**

ATGGCGCCGTCGCTGTGGAAGGGGCTGGTGGGCATCGGTCTCTTTGCCCTAGCCACGCCGCCTTTCCG
CTGCGCAGCATCGTTCTTATATGCGATTAACAGAAAAAGAAGATGAATCACTGCCAATAGATATAGTTCT
TCAGACTTCTGGCCTTTCAGTTACCTGTTACGGTATAGTTTCATATTGCAGGAGAGTTTAAAGACATG
GATGCCACTTCAGAACTGAAAAATAAGACATTTGATACGTTAAGGAATCACCCATCCTTTATGTATTTA
ATCATCGTGGTCGAGTACTTTCCGGCCTTCGGATACAGCAAATCTTCAAACCAAGATGCATTGCCTC
TAACACATCATTGAAGTTACGAAACTCGAATCACTGCGTCGT

ACGCGTACGCGGCCGCTCGAGCAGAACTCATCTCAGAAGAGGATCTGGCAGCAAATGATATCCTGGATT
ACAAGGATGACGACGATAAGGTTTAA

Protein Sequence: >RC207046 protein sequence
Red=Cloning site Green=Tags(s)
MAPSLWKGLVIGLIFALAHAAFSAAQHRSYMRLTEKEDESLPIDIVLQTLFAVTCYGIIVHIAGEFKDM
DATSELKNKFTDLRNHPSFYVFNHRGRVLFRRPSDTANSSNQDALSSNTSLKLRKLESLRR

TRTRPLEQKLISEEDLAANDILDYKDDDDKV

Chromatograms: https://cdn.origene.com/chromatograms/mk6626_a11.zip

Restriction Sites: SgfI-MluI



[View online »](#)

Cloning Scheme:


ACCN: NM_173470

ORF Size: 393 bp

OTI Disclaimer: The molecular sequence of this clone aligns with the gene accession number as a point of reference only. However, individual transcript sequences of the same gene can differ through naturally occurring variations (e.g. polymorphisms), each with its own valid existence. This clone is substantially in agreement with the reference, but a complete review of all prevailing variants is recommended prior to use. [More info](#)

OTI Annotation: This clone was engineered to express the complete ORF with an expression tag. Expression varies depending on the nature of the gene.

Components: The ORF clone is ion-exchange column purified and shipped in a 2D barcoded Matrix tube containing 10ug of transfection-ready, dried plasmid DNA (reconstitute with 100 ul of water).

- Reconstitution Method:**
1. Centrifuge at 5,000xg for 5min.
 2. Carefully open the tube and add 100ul of sterile water to dissolve the DNA.
 3. Close the tube and incubate for 10 minutes at room temperature.
 4. Briefly vortex the tube and then do a quick spin (less than 5000xg) to concentrate the liquid at the bottom.
 5. Store the suspended plasmid at -20°C. The DNA is stable for at least one year from date of shipping when stored at -20°C.

Note: Plasmids are not sterile. For experiments where strict sterility is required, filtration with 0.22um filter is required.

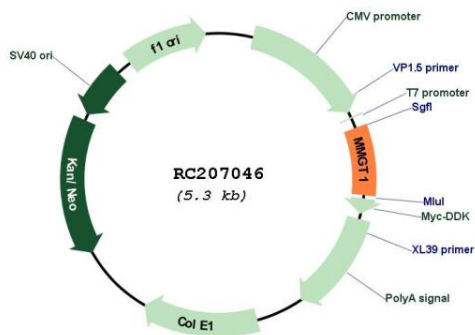
RefSeq: [NM_173470.2](#)

RefSeq Size: 3704 bp

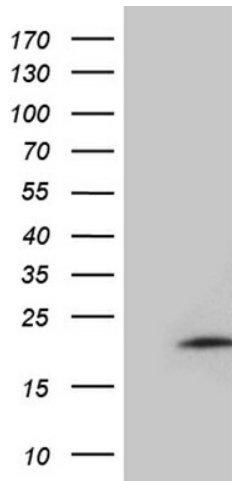
RefSeq ORF: 396 bp

Locus ID: 93380
UniProt ID: [Q8N4V1](#)
Cytogenetics: Xq26.3

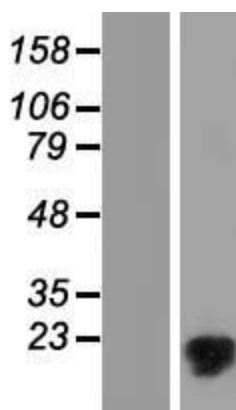
Protein Families: Transmembrane
MW: 14.7 kDa
Gene Summary: Mediates Mg(2+) transport.[UniProtKB/Swiss-Prot Function]

Product images:


Circular map for RC207046



HEK293T cells were transfected with the pCMV6-ENTRY control (Cat# [PS100001], Left lane) or pCMV6-ENTRY MMGT1 (Cat# RC207046, Right lane) cDNA for 48 hrs and lysed. Equivalent amounts of cell lysates (5 ug per lane) were separated by SDS-PAGE and immunoblotted with anti-MMGT1 (Cat# [TA811106])(1:2000). Positive lysates [LY406623] (100ug) and [LC406623] (20ug) can be purchased separately from OriGene.



Western blot validation of overexpression lysate (Cat# [LY406623]) using anti-DDK antibody (Cat# [TA50011-100]). Left: Cell lysates from untransfected HEK293T cells; Right: Cell lysates from HEK293T cells transfected with RC207046 using transfection reagent MegaTran 2.0 (Cat# [TT210002]).