

Product datasheet for RC207045

NALP12 (NLRP12) (NM_144687) Human Tagged ORF Clone

Product data:

Product Type:	Expression Plasmids
Product Name:	NALP12 (NLRP12) (NM_144687) Human Tagged ORF Clone
Tag:	Myc-DDK
Symbol:	NALP12
Synonyms:	CLR19.3; FCAS2; NALP12; PAN6; PYPAF7; RNO; RNO2
Mammalian Cell Selection:	Neomycin
Vector:	pCMV6-Entry (PS100001)
E. coli Selection:	Kanamycin (25 ug/mL)
ORF Nucleotide Sequence:	>RC207045 ORF sequence Red=Cloning site Blue=ORF Green=Tags(s)

TTTTGTAATACGACTCACTATAGGGCGGCCGGAATTCGTCGACTGGATCCGGTACCGAGGAGATCTGCC
GCC**CGATCGCC**

ATGCTACGAACCGCAGGCAGGGACGGCCTCTGTGCGCTGTCCACCTACTTGAAGAAGCTCGAGGCTGTGG
AACTGAAGAAGTTCAAGTTATACCTGGGGACCGCGACAGAGCTGGGAGAAGGCAAGATCCCTGGGGAAAG
CATGGAGAAGGCCGGTCCCCTGGAAATGGCCAGCTGCTCATCACCCTTCGGGCCAGAGGAGGCCTGG
AGGTTGGCTCTCAGCACCTTTGAGCGGATAAACAGGAAGGACCTGTGGGAGAGAGGACAGAGAGAGGACC
TGGTGAGGGATACCCACCTGGTGGCCCGTCTCACTTGGGAACCAAGTCAACATGCCTTCTGGAAGTCTC
TCTTGTCACCTCAAGAAAAGATCCCCAGGAAACCTACAGGGACTATGTCCGAGGAAATCCGGCTCATG
GAAGACCGCAATGCGCGCCTAGGGGAATGTGTCAACCTCAGCCACCGGTACACCCGGCTCCTGCTGGTGA
AGGAGCACTCAAACCCATGCAGGTCCAGCAGCAGCTTCTGGACACAGGCCGGGGACACGCGAGGACCGT
GGGACACCAGGCTAGCCCATCAAGATAGAGACCCTCTTTGAGCCAGACGAGGAGCGCCCGAGCCACCG
CGCACCGTGGTCAATGCAAGGCGCGCAGGGATAGGCAAGTCCATGCTGGCACACAAGGTGATGCTGGACT
GGGCGGACGGGAAGCTCTTCCAAGGCAGATTTGATTATCTCTTACATCAACTGCAGGGAGATGAACCA
GAGTGCCACGGAAATGCAGCATGCAAGACCTCATCTTCAGCTGCTGGCCTGAGCCAGCGCCCTCTCCAG
GAGCTCATCCGAGTTCGGAGCGCCTCTTTTCATCATCGACGGCTTCGATGAGCTCAAGCCTTCTTTCC
ACGATCCTCAGGGACCCTGGTGCCTCTGCTGGGAGGAGAAACGGCCACGGAGCTGCTTCTTAACAGCTT
AATTCCGAAGAAGCTGCTCCCTGAGCTATCTTTGCTCATCACCACACGGCCACGGCTTTGGAGAAGCTC
CACCGTCTGCTGGAGCACCCAGGCATGTGGAGATCCTGGGCTTCTCTGAGGCAGAAAGGAAGAACTACT
TCTACAAGTATTTCCACAATGCAGAGCAGGCGGGCCAAGTCTTCAATTACGTGAGGGACAACGAGCCTCT
CTTACCATGTGCTTCGTCCTTGGTGTGCTGGGTGGTGTACCTGCCTCCAGCAGCAGCTGGAGGGT
GGGGGGCTGTTGAGACAGACGTCCAGGACCACCACTGCAGTGTACATGCTCTACCTGCTGAGTCTGATGC
AACCAAGCCGGGGCCCGCGCCTCCAGCCCCACCAACCAGAGAGGGTTGTGCTCCTTGGCGGCAGA
TGGGCTCTGGAATCAGAAAATCCTATTTGAGGAGCAGGACCTCCGGAAGCACGGCTAGACGGGGAAGAC



View online »

GTCTCTGCCTTCCTCAACATGAACATCTTCCAGAAGGACATCAACTGTGAGAGGTACTACAGCTTCATCC
 ACTTGAGTTTCCAGGAATTTCTTTCAGCTATGTACTATATCCTGGACGAGGGGGAGGGCGGGGACAGGCC
 AGACCAGGACGTGACCAGGCTGTTGACCAGTACGCGTTTTCTGAAAGGAGCTTCTGGCACTCACCAGC
 CGCTTCTGTTTGGACTCCTGAACGAGGAGACCAGGAGCCACCTGGAGAAGAGTCTCTGTGGAAGGTCT
 CGCCGCACATCAAGATGGACCTGTTGCAGTGGATCCAAAGCAAAGCTCAGAGCGACGGCTCCACCCTGCA
 GCAGGGCTCCTTGGAGTTCTTCAGCTGCTTGTACGAGATCCAGGAGGAGGAGTTTATCCAGCAGGCCCTG
 AGCCACTTCCAGGTGATCGTGGTCAGCAACATTGCCTCCAAGATGGAGCACATGGTCTCCTGTTCTGTG
 TGAAGCGCTGCAGGAGCGCCAGGTGCTGCATTTGTATGGCGCCACCTACAGCGCGGACGGGGAAGACCG
 CGCGAGGTGCTCCGACGAGCGCACACGCTGTTGGTGCAGCTACCAGAGAGGACCGTTCTGCTGGACGCC
 TACAGTGAACATCTGGCAGCGGCCCTGTGCACCAATCCAAACCTGATAGAGCTGTCTGTACCGAAATG
 CCCTGGGACGCGGGGGTGAAGCTGCTGTCAAGGACTCAGACACCCCAACTGCAAATTCAGAACCT
 GAGGCTGAAGAGGTGCCGCATCTCCAGCTCAGCCTGCGAGGACCTCTCTGCAGCTCATAGCCAATAAG
 AATTTGACAAGGATGGATCTCAGTGGCAACGGCGTTGGATTCCCAGGCATGATGTGCTTTGCGAGGGCC
 TCGGCATCCCCAGTGCAGGCTGCAGATGATTCAGTTGAGGAAGTGTGAGTGGAGTCCGGGGCTTGTCA
 GGAGATGGCTTCTGTGCTCGGCACCAACCCACATCTGGTTGAGTTGGACCTGACAGGAAATGCAGTGGAG
 GATTTGGGCTGAGGTTACTATGCCAGGACTGAGGCACCCAGTCTGCAGACTACGGACTTTGTGGCTGA
 AGATCTGCCGCCCTCACTGCTGCTGCCTGTGACGAGCTGGCCTCAACTCTCAGTGTGAACCAGAGCCTGAG
 AGAGCTGGACCTGAGCCTGAATGAGCTGGGGGACCTCGGGGTGCTGCTGTGTGAGGGCCTCAGGCAT
 CCCACGTGCAAGCTCCAGACCCTGCGGTTGGGCATCTGCCGGCTGGGCTCTGCCGCTGTGAGGGTCTTT
 CTGTGGTGTCCAGGCCAACCAACCTCCGGGAGCTGGACTTGAGTTTCAACGACTGGGAGACTGGGG
 CCTGTGGTGTGCTGAGGGGCTGCAACATCCCGCTGCAGACTCCAGAACTGTGGCTGGATAGCTGT
 GGCCTCACAGCCAAGGCTTGTGAGAATCTTTACTTACCCTGGGGATCAACCAGACCTTGACCGACCTTT
 ACCTGACCAACAACGCCCTAGGGGACACAGGTGTCGACTGCTTGAAGCGGCTGAGCCATCTGGCTG
 CAAACTCCGAGTCTCTGTTATTTGGGATGGACCTGAATAAAATGACCCACAGTAGGTTGGCAGCGCTT
 CGAGTAACAAAACCTTATTTGGACATTGGCTGC

AGCGGACCGACGCGTACGCGGCCGCTCGAGCAGAACTCATCTCAGAAGAGGATCTGGCAGCAAATGATATCC
 TGGATTACAAGGATGACGACGATAAGGTTTAA

Protein Sequence:

>RC207045 protein sequence
 Red=Cloning site Green=Tags(s)

MLRTRAGRDGLCRLSTYLEELEAVELKFKLYLGTATELGEGKIPWGSMEKAGPLEMAQLLITHFGPEEAW
 RLALSTFERINRKDLWERGQREDLVRDTPPGPSSLGNQSTCLLEVSIVTPRKDPQETRYRDRYVRRKFRML
 EDNRNARLGEVNLSHRYRLLLVKEHSNPMQVQQQLLDTGRGHARTVGHQASPIKIETLFEPDEERPEPP
 RTVVMQGAAGIGKSM LAHKVMLDWADGKLFQGRFDYLFYINCREMNQSATECSMQDLIFSCWPEPSAPLQ
 ELIRVPERLLFIIDGFDELKPSFHDPQGPWCLCWEERKPTTELLNSLIRKLLPELSLLITTRPTALEKL
 HRLLHPRHVEILGFSEAERKEYFYKYFHNAEQGVFNVYVRDNEPLFTMCFVPLVCWVVTCLQQQLEG
 GLLLRQTSRTTTAVYMLYLLSLMQPKPGAPRLQPPPNQRGLCSLAADGLWNQKILFEEQDLRKHGLDGED
 VSAFLNMNIFQKDINCERYYSFIHLSFQEFFAAMYIILDEGEGGAGPDQDVTRLLTEYAFSERSFLALTS
 RFLFGLLNEETRSHLEKSLCWKVSPIKMDLLQWISKAQSDGSTLQQGSLEFFSCLYEIQEEFIQQAL
 SHFQVIVVSNIAASKMEHMVSSFCLKRCSRSAQVHLHYGATYSADGEDRARCAGAHLLVQLPERTVLLDA
 YSEHLAALCTNPNIIELSLYRNALGSRGVKLLCQGLRHPNCKLQNLRLKRCRISSACEDLSAALIANK
 NLTRMDLSGNGVGFPGMMLLCEGLRHPQCRLQMIQLRKCQLESGACQEMASVLTGNPHLVELDLTGNAL
 DLGLRLLCQGLRHPVCRRLTLWLKICRLTAAACDELASTLSVNQSLRELDLSNELGDLGVLVLLCEGLRH
 PTCKLQTLRLGICRLGSAACEGLSVVLQANHNRELDLDFNDLGDWGLWLLAEGHQHPACRLQKLWLDSC
 GLTAKACENLYFTLGINQTLTDLYLNNALGDTGVRLCKRLSHPGCKLRVLLWFGMDLNKMTSRLAAL
 RVTKPYLDIGC

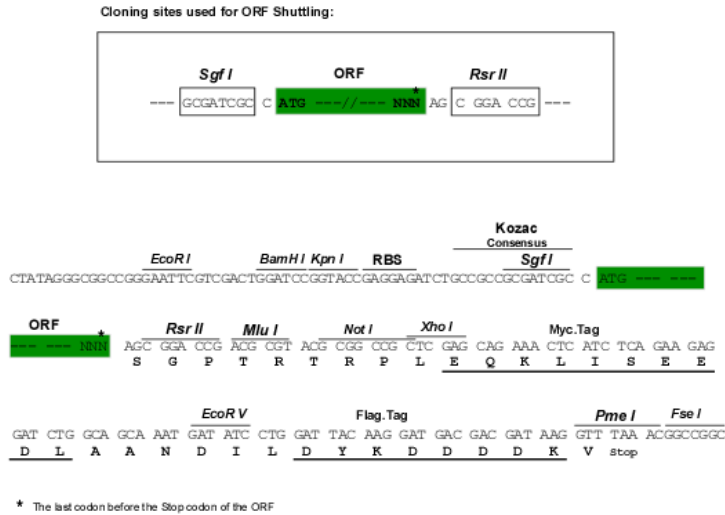
SGPTRTRPLEQKLI SEEDLAANDILDYKDDDDKV

Chromatograms:

https://cdn.origene.com/chromatograms/mk6188_a04.zip

Restriction Sites: SgfI-RsrII

Cloning Scheme:



ACCN: NM_144687

ORF Size: 3183 bp

OTI Disclaimer: The molecular sequence of this clone aligns with the gene accession number as a point of reference only. However, individual transcript sequences of the same gene can differ through naturally occurring variations (e.g. polymorphisms), each with its own valid existence. This clone is substantially in agreement with the reference, but a complete review of all prevailing variants is recommended prior to use. [More info](#)

OTI Annotation: This clone was engineered to express the complete ORF with an expression tag. Expression varies depending on the nature of the gene.

Components: The ORF clone is ion-exchange column purified and shipped in a 2D barcoded Matrix tube containing 10ug of transfection-ready, dried plasmid DNA (reconstitute with 100 ul of water).

- Reconstitution Method:**
1. Centrifuge at 5,000xg for 5min.
 2. Carefully open the tube and add 100ul of sterile water to dissolve the DNA.
 3. Close the tube and incubate for 10 minutes at room temperature.
 4. Briefly vortex the tube and then do a quick spin (less than 5000xg) to concentrate the liquid at the bottom.
 5. Store the suspended plasmid at -20°C. The DNA is stable for at least one year from date of shipping when stored at -20°C.

Note: Plasmids are not sterile. For experiments where strict sterility is required, filtration with 0.22um filter is required.

RefSeq: [NM_144687.4](#)

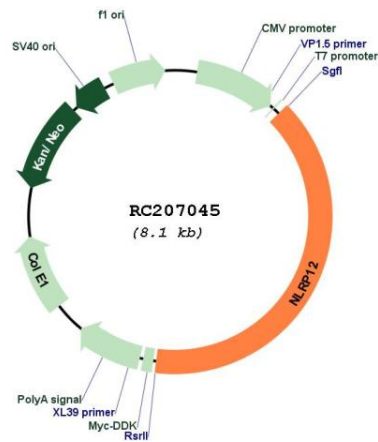
RefSeq Size: 3880 bp

RefSeq ORF: 3186 bp

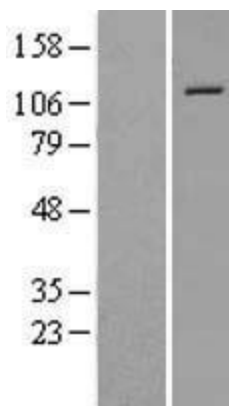
Locus ID: 91662
UniProt ID: [P59046](#)
Cytogenetics: 19q13.42
Domains: LRR, PAAD_DAPIN
MW: 120.2 kDa

Gene Summary: This gene encodes a member of the CATERPILLER family of cytoplasmic proteins. The encoded protein, which contains an N-terminal pyrin domain, a NACHT domain, a NACHT-associated domain, and a C-terminus leucine-rich repeat region, functions as an attenuating factor of inflammation by suppressing inflammatory responses in activated monocytes. Mutations in this gene cause familial cold autoinflammatory syndrome type 2. Alternative splicing results in multiple transcript variants. [provided by RefSeq, Mar 2013]

Product images:



Circular map for RC207045



Western blot validation of overexpression lysate (Cat# [LY403402]) using anti-DDK antibody (Cat# [TA50011-100]). Left: Cell lysates from untransfected HEK293T cells; Right: Cell lysates from HEK293T cells transfected with RC207045 using transfection reagent MegaTran 2.0 (Cat# [TT210002]).