

Product datasheet for **RC207044**

C20orf160 (CCM2L) (NM_080625) Human Tagged ORF Clone

Product data:

Product Type:	Expression Plasmids
Product Name:	C20orf160 (CCM2L) (NM_080625) Human Tagged ORF Clone
Tag:	Myc-DDK
Symbol:	C20orf160
Synonyms:	C20orf160; dj310O13.5
Mammalian Cell Selection:	Neomycin
Vector:	pCMV6-Entry (PS100001)
E. coli Selection:	Kanamycin (25 ug/mL)



[View online »](#)

ORF Nucleotide Sequence:

>RC207044 representing NM_080625
 Red=Cloning site Blue=ORF Green=Tags(s)

TTTTGTAATACGACTCACTATAGGGCGGCCGGAATTCGTCGACTGGATCCGGTACCGAGGAGATCTGCC
 GCC**CGGATCGCC**

ATGGAATATGAAGTCAAGAAAGGAAGAAGGGCTTTGTATCCCCATCCGAAGGCTGGTGTCCCAAGG
 CCGGGCGCCGGCAGCCTGTAGGAGCAGCGTGAGCCGCCGCCCTGCACTCGATGCCCTTTATCCCC
 CGACTACCTCATCGACCCAGATTCTGTGTGTGACTACCTGGAGAAAGAGGTCAAGTTCTGGGCCAC
 CTTACCTGGGTGACTTCTCACTGAACCCTCCAGTCGGGACGAGCTCCTGCAGCTGCTAGACACCGCCA
 GGCAGCTGAAGGAGCTGCCGCTGAAGACCACGGCGGAGCAGGACAGCATCCTGAGCCTGTCTGCCGCTG
 CCTGTGCTCACCTGGCGGACAATGAAGAGCTCATTCTGCGAATCCCTACGCACGAGATCGCCGCCG
 TCCTACCTGCAGGACGACGCTGCACCTGCTAGTGCTCAAGACCGGTCTGGGTGTGACCCGGTCCGG
 CCGGCGTGGATGCCAGCCAGGCGGCGCAGGACGCGACCCCGCCAGGCGGGGCGCCGAGAAGCG
 GCGGGTGGGACCGCGGAGCGGCCACACCATCTGCAGCCTGGACTGGCGGATGGGTGGGTGGGGC
 GCCCGGAGGCCCGGGCCGGGGAGGCGCGCGCCGAGCTTGGAGCGCCAGCGCGCCGGGGCGGGCGT
 CGGGCAGCTGGGAGCGACGGCAGACGTTACGCGCAGCTGGGAGCGCGGCACGGAGCGCGCGCGG
 CGGCGGCGGGAAAGCCGGGCGGTAGCTGGGAGCGGAGGCGGGCAGCGCGGGGAGGACGCTGG
 GAGCGGCCACCCCGGCCCAACCCGCTCGACCCGACAGCCAGCCCGACGCTACTGCAACCTGG
 TCATCCTGGTGTAGCCAACAGGACGCTGCAGAGGAGTCTGCGCACTCATCTGTCAAGTCTTCCAGAT
 CATCTACGGGACAGAGTATTGAGTGTGTGGACCGGGCTGGCTACCACTACACATCCACACCTGAACGG
 CCATGGCTCTGCAGCCGATAATGGCTCCAGGACACCTTTGAAGCATGTTACAGCGGACGTTCCACACC
 TTCTTTCCATGGCTCCACTGCAGCGGACGACACAGCAGTCTGGGCTTGGAGCAGTTACAGGATTAC
 ATGGTCACGTTGCGGAGTAAGCTGGGGCCCTCGAGATCCAGCAGTTTGGGATGCTGCTGCGGGAGTACC
 GGCTGGGCTGCCATCCAGGACTATTGCACAGGCCTGC

ACGCGTACGCGGCCGCTCGAGCAGAACTCATCTCAGAAGAGGATCTGGCAGCAATGATATCCTGGATT
 ACAAGGATGACGACGATAAGGTTTAA

Protein Sequence:

>RC207044 representing NM_080625
 Red=Cloning site Green=Tags(s)

MEYEVKKGKGFVSPIRRLLVFPKAGRRAACRSSVSRPLHSMPL YPPDYLI DPQILL CDYLEKEVKFLGH
 LTWVTSSLNPSSRDELLQLLDTARQLKELPLKTTAEQDSILSL SARCLLL TWRDNEELILRIPTHEIAAA
 SYLQDDALHLLVLKTGLGVPVPAGVDASPGGAGRDPGPPGGAPEKRRVGTAEARRHTICSLDWRMGWGGG
 AAEARAGGGGSLERQRAGARASGSWERRQTFSGSWERRHGGGGGGGAGKPGGSWERRQAGSGGGGSW
 ERRHPGNPLDPQDPSDAYCNLVILAVANRDAEE SCALICQVFQIIYGDQSI ECVDRAGYHYTSTPER
 PWLCSRIMAPRTP LKHVTAARPHLL SMAPTA AAAATTAVWAWSSYRITWSRCGVSWGPSRSSSLRCCCGST
 GWGCPSTIAQAC

TRTRPLEQKLISEEDLAANDILDYKDDDDKV

Chromatograms:

https://cdn.origene.com/chromatograms/mk8120_h10.zip

Restriction Sites:

SgfI-MluI

Cloning Scheme:


ACCN: NM_080625

ORF Size: 1299 bp

OTI Disclaimer: The molecular sequence of this clone aligns with the gene accession number as a point of reference only. However, individual transcript sequences of the same gene can differ through naturally occurring variations (e.g. polymorphisms), each with its own valid existence. This clone is substantially in agreement with the reference, but a complete review of all prevailing variants is recommended prior to use. [More info](#)

OTI Annotation: This clone was engineered to express the complete ORF with an expression tag. Expression varies depending on the nature of the gene.

Components: The ORF clone is ion-exchange column purified and shipped in a 2D barcoded Matrix tube containing 10ug of transfection-ready, dried plasmid DNA (reconstitute with 100 ul of water).

Reconstitution Method:

1. Centrifuge at 5,000xg for 5min.
2. Carefully open the tube and add 100ul of sterile water to dissolve the DNA.
3. Close the tube and incubate for 10 minutes at room temperature.
4. Briefly vortex the tube and then do a quick spin (less than 5000xg) to concentrate the liquid at the bottom.
5. Store the suspended plasmid at -20°C. The DNA is stable for at least one year from date of shipping when stored at -20°C.

RefSeq: [NM_080625.4](#)

RefSeq Size: 2532 bp

RefSeq ORF: 1302 bp

Locus ID: 140706

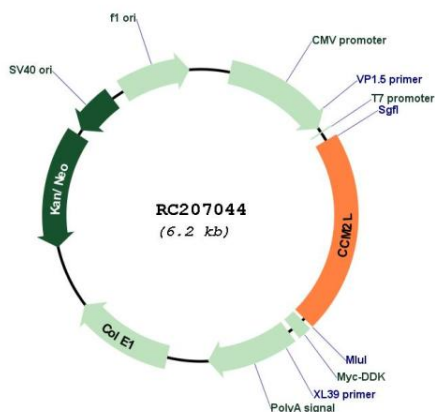
UniProt ID: [Q9NUG4](#)

Cytogenetics: 20q11.21

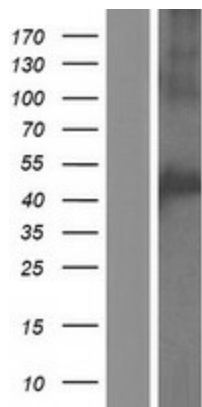
Protein Families: Druggable Genome

MW: 47.2 kDa

Product images:



Circular map for RC207044



Western blot validation of overexpression lysate (Cat# [LY409162]) using anti-DDK antibody (Cat# [TA50011-100]). Left: Cell lysates from untransfected HEK293T cells; Right: Cell lysates from HEK293T cells transfected with RC207044 using transfection reagent MegaTran 2.0 (Cat# [TT210002]).