

Product datasheet for **RC207038**

CNPase (CNP) (NM_033133) Human Tagged ORF Clone

Product data:

Product Type:	Expression Plasmids
Product Name:	CNPase (CNP) (NM_033133) Human Tagged ORF Clone
Tag:	Myc-DDK
Symbol:	CNPase
Synonyms:	CNP1
Mammalian Cell Selection:	Neomycin
Vector:	pCMV6-Entry (PS100001)
E. coli Selection:	Kanamycin (25 ug/mL)



[View online »](#)

ORF Nucleotide Sequence:

>RC207038 ORF sequence
 Red=Cloning site Blue=ORF Green=Tags(s)

TTTTGTAATACGACTCACTATAGGGCGGCCGGAATTCGTCGACTGGATCCGGTACCGAGGAGATCTGCC
 GCC**CGGATCGCC**

ATGAACAGAGGCTTCTCCGAAAAAGCCACACATTCTGCCAAGATCTTCTCCGAAGATGTCATCCT
 CAGGGCCAAGGACAAGCCTGAGCTGCAGTTCCCTTCCTCAGGATGAGGACACAGTGGCCACGCTGCT
 AGAGTGCAAGACGCTCTTCATCTTGCGCGGCTGCCAGGAAGCGCAAGTCCACGCTGGCACGGGTATC
 GTGGACAAGTACCGTATGGCACCAAGATGGTGTGCGCTGACGCTTACAAGATCACCCCGGCGCTCGAG
 GAGCCTTCTCCGAGGAGTACAAGCGGCTCGATGAGGACCTGGCTGCCTACTGCCGCCCGGGACATCAG
 AATTCTTGCTGCTGATGACACCAACCACGAACGGGAACGGCTGGAGCAGCTCTTTGAAATGGCCGACCAG
 TACCAGTACCAGTGGTGTGGTGGAGCCCAAGACGGCTGGCGGCTGGACTGTGCCAGCTCAAGGAGA
 AGAACAGTGGCAGCTGTCGGCTGATGACCTGAAGAAGCTGAAGCCTGGGCTGGAGAAGGACTTCTGCC
 GCTCTACTTCGGCTGGTTCCTGACCAAGAAGAGCTCTGAGACCCTCCGCAAGCCGGCCAGTCTTCTCTG
 GAAGAGCTGGGGAACCACAAGGCCTTCAAGAAGGAGCTGCGACAATTCGTCCTGGGGATGAGCCAGGG
 AGAAGATGGACTTGGTCACCTACTTTGGAAGAGACCCCAAGCGTGTGCATTGCAACAACCAAGTTTTG
 TGACTACGGGAAGGCTCCCGGGGAGAGGAGTACGCTCAACAAGATGTGTTAAAGAAATCTTACTCCAAG
 GCCTTCACGCTGACCATCTCTGCCCTCTTTGTGACACCAAGACGACTGGGGCCCGGGTGGAGTTAAGCG
 AGCAGCAACTGCAGTTGTGGCCGAGTGTGTTGACAAGCTGTCAACCACTGACAACCTGCCCGGGGGAG
 CCGCGCCACATCACCTCGGCTGTGACGCTGACGTAGAGGCCGTGCAGACGGCCTTGACCTCTTAGAG
 ATCTGCGGCAGGAGAAGGGGGCAGCCGAGGCGAGGAGTGGCGAGCTAAGCCGGGGCAAGCTCTATT
 CCTTGGGCAATGGGCGCTGGATGCTGACCCTGGCCAAGAACATGGAGGTCAGGGCCATCTCACGGGGTA
 CTACGGGAAAGGCAACCTGTGCCACGCAAGGTAGCCGGAAGGGGGCGCTTGCAATCCTGCACCATC
 ATA

ACGCGTACGCGGCCGCTCGAGCAGAACTCATCTCAGAAGAGGATCTGGCAGCAATGATATCCTGGATT
 ACAAGGATGACGACGATAAGGTTTAA

Protein Sequence:

>RC207038 protein sequence
 Red=Cloning site Green=Tags(s)

MNRGFSRKSHTFLPKIFFRKMSSSGAKDKPELQFPFLQDEDTVATLLECKTLFILRGLPGSGKSTLARVI
 VDKYRDGTMVSADAYKITPGARGAFSEYKRLDEDLAAYCRRRDIRILVLDDTNHERERLEQLFEMADQ
 YQYQVVLVEPKTAWRLDCAQLKEKNQWQLSADDLKKLKPGLKDFLPLYFGWFLTKKSSETLRKAGQVFL
 EELGNHKAFKKELRQFVPGDEPREKMDLVTYFGKRPPGVLHCTTKFCDYGKAPGAEYAQQDVLKKSYSK
 AFTLTISALFVTPKTTGARVELSEQQLQLWPSVDKLSPTDNLPRGSRAHITLGAADVEAVQTGLDLLE
 ILRQEKGGSRGEEVGEVLSRGKLYSLGNRWMLTLAKNMEVRAIFTGYYGKGPVPTQGSRRGGALQSCTI
 I

TRTRPLEQKLISEEDLAANDILDYKDDDDKV

Chromatograms:

https://cdn.origene.com/chromatograms/mk6333_e07.zip

Restriction Sites:

Sgfl-Mlul

Cloning Scheme:


ACCN: NM_033133

ORF Size: 1263 bp

OTI Disclaimer: The molecular sequence of this clone aligns with the gene accession number as a point of reference only. However, individual transcript sequences of the same gene can differ through naturally occurring variations (e.g. polymorphisms), each with its own valid existence. This clone is substantially in agreement with the reference, but a complete review of all prevailing variants is recommended prior to use. [More info](#)

OTI Annotation: This clone was engineered to express the complete ORF with an expression tag. Expression varies depending on the nature of the gene.

Components: The ORF clone is ion-exchange column purified and shipped in a 2D barcoded Matrix tube containing 10ug of transfection-ready, dried plasmid DNA (reconstitute with 100 ul of water).

Reconstitution Method:

1. Centrifuge at 5,000xg for 5min.
2. Carefully open the tube and add 100ul of sterile water to dissolve the DNA.
3. Close the tube and incubate for 10 minutes at room temperature.
4. Briefly vortex the tube and then do a quick spin (less than 5000xg) to concentrate the liquid at the bottom.
5. Store the suspended plasmid at -20°C. The DNA is stable for at least one year from date of shipping when stored at -20°C.

RefSeq: [NM_033133.5](#)

RefSeq Size: 5222 bp

RefSeq ORF: 1266 bp

Locus ID: 1267

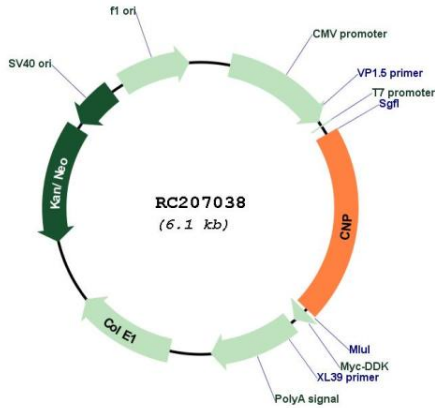
UniProt ID: [P09543](#)

Cytogenetics: 17q21.2

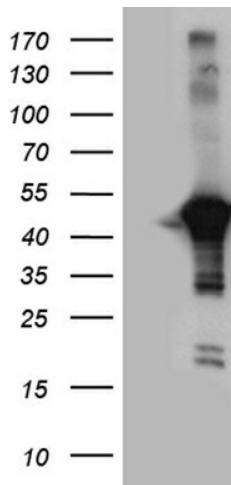
MW: 47.6 kDa

Gene Summary: May participate in RNA metabolism in the myelinating cell, CNP is the third most abundant protein in central nervous system myelin.[UniProtKB/Swiss-Prot Function]

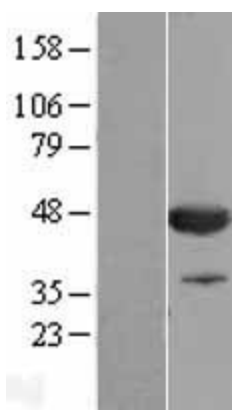
Product images:



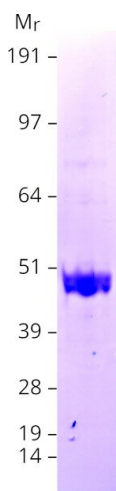
Circular map for RC207038



HEK293T cells were transfected with the pCMV6-ENTRY control (Cat# [PS100001], Left lane) or pCMV6-ENTRY CNP (Cat# RC207038, Right lane) cDNA for 48 hrs and lysed. Equivalent amounts of cell lysates (5 ug per lane) were separated by SDS-PAGE and immunoblotted with anti-CNP (1:2000) (Cat# [TA811100]). Positive lysates [LY409699] (100ug) and [LC409699] (20ug) can be purchased separately from OriGene.



Western blot validation of overexpression lysate (Cat# [LY409699]) using anti-DDK antibody (Cat# [TA50011-100]). Left: Cell lysates from untransfected HEK293T cells; Right: Cell lysates from HEK293T cells transfected with RC207038 using transfection reagent MegaTran 2.0 (Cat# [TT210002]).



Coomassie blue staining of purified CNP protein (Cat# [TP307038]). The protein was produced from HEK293T cells transfected with CNP cDNA clone (Cat# RC207038) using MegaTran 2.0 (Cat# [TT210002]).