

Product datasheet for RC207032

CLEC4D (NM_080387) Human Tagged ORF Clone

Product data:

Product Type:	Expression Plasmids
Product Name:	CLEC4D (NM_080387) Human Tagged ORF Clone
Tag:	Myc-DDK
Symbol:	CLEC4D
Synonyms:	CD368; CLEC-6; CLEC6; CLECSF8; Dectin-3; MCL; MPCL
Mammalian Cell Selection:	Neomycin
Vector:	pCMV6-Entry (PS100001)
E. coli Selection:	Kanamycin (25 ug/mL)
ORF Nucleotide Sequence:	>RC207032 ORF sequence Red=Cloning site Blue=ORF Green=Tags(s)

TTTTGTAATACGACTCACTATAGGGCGCCGGGAATTCGTCGACTGGATCCGGTACCGAGGAGATCTGCC
GCC**CGATCGCC**

ATGGGGCTAGAAAACTCAAAGTAACTGGAAGGAGGCATGCATCCCCAGCTGATACCTTCGGTTATTG
CTGTAGTTTTTCATCTTACTTCTCAGTGTCTGTTTTATTGCAAGTTGTTGGTGACTCATCACAACTTTTTC
ACGCTGTAAGAGAGGCACAGGAGTGCACAAGTTAGAGCACCATGCAAAGCTCAAATGCATCAAAGAGAAA
TCAGAAGTAAAAGTGTGAAGGGAGCACCTGGAAGTGTGTCTATTGACTGGAGAGCCTTCCAGTCCA
ACTGCTATTTTCTTACTGACAACAAGACGTGGGCTGAGAGTAAAAGGAACTGTTCAAGGATGGGGGC
CCATCTGATGACCATCAGCACGGAAGCTGAGCAGAACTTTATTATTCAGTTTCTGGATAGACGGCTTTCC
TATTTCTTGGACTTAGAGATGAGAATGCCAAAGTCAAGTGGCGTTGGGTGGACCAGACGCCATTTAACC
CACGCAGAGTATTCTGGCATAAGAATGAACCCGACAACCTCAGGGAGAAAAGTGTGTTGTTCTGTTTA
TAACCAAGATAAATGGCCTGGAATGATGTTCTTGTAACTTTGAAGCAAGTAGGATTTGAAAAACCT
GGAACAACATTGAAC

ACGCGTACGCGGCGCTCGAGCAGAACTCATCTCAGAAGAGGATCTGGCAGCAAATGATATCTGGATT
ACAAGGATGACGACGATAAGGTTTAA



[View online »](#)

Protein Sequence: >RC207032 protein sequence
Red=Cloning site Green=Tags(s)

MGLEKPQSKLEGGMHPQLIPSVIAVVFILLLSVCFIASCLVTHHNF SRCKRGTGVHKL EHHAKLKCIKEK
 SELKSAEGSTWCCPIDWRAFQSNCFPLTDNKTWAESERNCSGMAHLMTISTEAEQNFIIQFLDRRLS
 YFLGLRDENAKGQWRVDQTPFNPRRVFVHKNEP DNSQGENCVLVYVNDKWAWNDVPCNF EASRICKIP
 GTTLN

TRTRPLEQKLISEEDLAANDILDYKDDDDKV

Chromatograms: https://cdn.origene.com/chromatograms/mk6518_c05.zip

Restriction Sites: SgfI-MluI

Cloning Scheme:

Cloning sites used for ORF Shuttling:



* The last codon before the Stop codon of the ORF

ACCN: NM_080387

ORF Size: 645 bp

OTI Disclaimer: The molecular sequence of this clone aligns with the gene accession number as a point of reference only. However, individual transcript sequences of the same gene can differ through naturally occurring variations (e.g. polymorphisms), each with its own valid existence. This clone is substantially in agreement with the reference, but a complete review of all prevailing variants is recommended prior to use. [More info](#)

OTI Annotation: This clone was engineered to express the complete ORF with an expression tag. Expression varies depending on the nature of the gene.

Components: The ORF clone is ion-exchange column purified and shipped in a 2D barcoded Matrix tube containing 10ug of transfection-ready, dried plasmid DNA (reconstitute with 100 ul of water).

Reconstitution Method:

1. Centrifuge at 5,000xg for 5min.
2. Carefully open the tube and add 100ul of sterile water to dissolve the DNA.
3. Close the tube and incubate for 10 minutes at room temperature.
4. Briefly vortex the tube and then do a quick spin (less than 5000xg) to concentrate the liquid at the bottom.
5. Store the suspended plasmid at -20°C. The DNA is stable for at least one year from date of shipping when stored at -20°C.

RefSeq: [NM_080387.5](#)

RefSeq Size: 1973 bp

RefSeq ORF: 648 bp

Locus ID: 338339

UniProt ID: [Q8WXI8](#)

Cytogenetics: 12p13.31

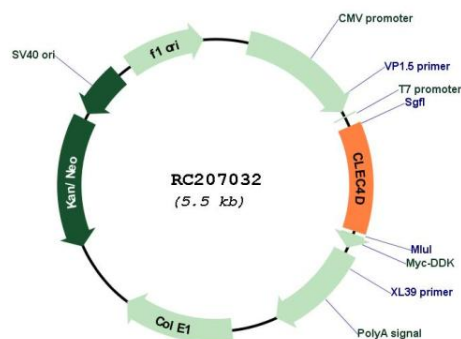
Domains: CLECT

Protein Families: Druggable Genome, Transmembrane

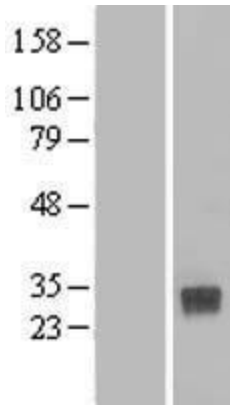
MW: 24.7 kDa

Gene Summary: This gene encodes a member of the C-type lectin/C-type lectin-like domain (CTL/CTLD) superfamily. Members of this family share a common protein fold and have diverse functions, such as cell adhesion, cell-cell signalling, glycoprotein turnover, and roles in inflammation and immune response. This gene is closely linked to other CTL/CTLD superfamily members on chromosome 12p13 in the natural killer gene complex region. [provided by RefSeq, Jul 2008]

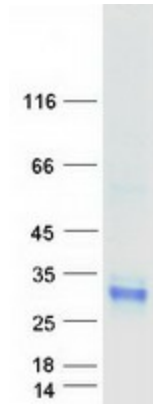
Product images:



Circular map for RC207032



Western blot validation of overexpression lysate (Cat# [LY409180]) using anti-DDK antibody (Cat# [TA50011-100]). Left: Cell lysates from untransfected HEK293T cells; Right: Cell lysates from HEK293T cells transfected with RC207032 using transfection reagent MegaTran 2.0 (Cat# [TT210002]).



Coomassie blue staining of purified CLEC4D protein (Cat# [TP307032]). The protein was produced from HEK293T cells transfected with CLEC4D cDNA clone (Cat# RC207032) using MegaTran 2.0 (Cat# [TT210002]).