

## Product datasheet for **RC207020**

### **IL10RA (NM\_001558) Human Tagged ORF Clone**

#### **Product data:**

Product Type:	Expression Plasmids
Product Name:	IL10RA (NM_001558) Human Tagged ORF Clone
Tag:	Myc-DDK
Symbol:	IL10RA
Synonyms:	CD210; CD210a; CDW210A; HIL-10R; IL-10R1; IL10R
Mammalian Cell Selection:	Neomycin
Vector:	pCMV6-Entry (PS100001)
E. coli Selection:	Kanamycin (25 ug/mL)



[View online »](#)

**ORF Nucleotide Sequence:**

>RC207020 representing NM\_001558  
 Red=Cloning site Blue=ORF Green=Tags(s)

TTTTGTAATACGACTCACTATAGGGCGGCCGGGAATTCGTCGACTGGATCCGGTACCGAGGAGATCTGCC  
 GCC**GCGATCGCC**

ATGCTGCCGTGCCTCGTAGTGTCTGGCGGCGCTCCTCAGCCTCCGTCTTGGCTCAGACGCTCATGGGA  
 CAGAGCTGCCAGCCCTCCGTCTGTGTGGTTGAAGCAGAATTTTCCACCACATCTCCACTGGACACC  
 CATCCCAATCAGTCTGAAAGTACCTGCTATGAAGTGGCACTCCTGAGGTATGGAATAGAGTCTGGAAC  
 TCCATCTCCAAGTGTAGCCAGACCTGTCTATGACCTTACCGCAGTGACCTTGGACCTGTACCACAGCA  
 ATGGCTACCGGGCAGAGTGC GGCTGTGGACGGCAGCCGGCACTCCAAGTGGACCGTACCAACACCCG  
 CTTCTCTGTGGATGAAGTACTCTGACAGTTGGCAGTGTGAACCTAGAGATCCACAATGGCTTCATCCTC  
 GGGAAAGATTACGACTACCCAGGCCAAGATGGCCCCGCAATGACACATATGAAAGCATCTTCAGTCACT  
 TCCGAGAGTATGAGATTGCCATTCGAAGGTGCCGGGAACTTACGTTACACACAAGAAAGTAAACA  
 TGGAAACTTCAGCTCCTAACCTCTGGAGAAGTGGGAGAGTTCTGTGCCAGGTGAAACCATCTGTGCT  
 TCCCGAAGTAACAAGGGGATGTGGTCTAAAGAGGAGTGCATCTCCCTCACCAGGCAGTATTTACCGTGA  
 CCAACGTATCATCTTTTGCCTTTGTCTGCTCTCCGGAGCCCTCGCCTACTGCCTGGCCCTCCA  
 GCTGTATGTGCGGCGCCGAAAGAAGTACCCAGTGTCTGCTCTTCAAGAAGCCAGCCCTTATCTTTC  
 ATCAGCCAGCGTCCCTCCCAGAGACCAAGACACCATCCACCCGCTTGTAGAGGAGCCTTTTGAAGG  
 TGTCCCAGAGCTGAAGAAGTGGACCTGCACGGCAGCACAGACAGTGGCTTTGGCAGCACCAAGCCATC  
 CCTGCAGACTGAAGAGCCCCAGTTCCTCCTCCCTGACCCTACCCCCAGGCTGACAGAAGCTGGGAAAC  
 GGGGAGCCCCCTGTGCTGGGGGACAGCTGCAGTAGTGGCAGCAATAGCACAGACAGCGGGATCTGCC  
 TGAGGAGCCAGCTGAGCCCCAGCACAGGGCCACCTGGGAGCAACAGGTGGGGAGCAACAGCAGGGGG  
 CCAGGATGACAGTGGCATTGACTTAGTTCAAAGTCTGAGGGCCGGGCTGGGGACACACAGGGTGGCTCG  
 GCCTTGGGCCACCAAGTCCCCGGAGCCTGAGGTGCCTGGGGAAGAAGCCAGCTGCTGTGGCATTCC  
 AGGGTTACCTGAGGCAGACCAGATGTGCTGAAGAGAAGGCAACCAAGACAGGCTGCCTGGAGGAAGAATC  
 GCCCTTGACAGATGGCCTTGGCCCCAAATTCGGGAGATGCCTGGTTGATGAGGCAGGCTTGATCCACCA  
 GCCCTGGCCAAGGGCTATTTGAAACAGGATCCTCTAGAAATGACTCTGGCTTCTCAGGGGCCCCAACGG  
 GACAGTGAACACAGCCACTGAGGAATGGTCACTCCTGGCCTTGAGCAGCTGCAGTGACCTGGGAATATC  
 TGACTGGAGCTTTGCCATGACCTTGCCCTCTAGGCTGTGTGGCAGCCAGGTGGTCTCTGGGCAGC  
 TTTAACTCAGACCTGGTACCCTGCCCTCATCTAGCCTGCAGTCAAGTGAG

**ACGCGT**ACGCGGCGGCTCGAGCAGAAACTCATCTCAGAAGAGGATCTGGCAGCAAATGATATCCTGGATT  
 ACAAGGATGACGACGATAAGGTTTAA

**Protein Sequence:**

>RC207020 representing NM\_001558  
 Red=Cloning site Green=Tags(s)

MLPCLVLLAALLSLRLGSDAHGTELPSPSVWFEEFFHHILHWTPIPNQSESTCYEVALLRYGIESWN  
 SISNCSQTLSDYDLTAVTLDLYHSNGYRVRVAVDGRHSNWTNTNTRFSVDEVTLTVGSVNLEIHNGFIL  
 GKIQLPRPKMAPANDTYESIFSHFREYEIAIRKVPGNFTFTHKKVKHENFSLTSGEVGEFCVQKPSVA  
 SRSNKGMSKEECISLTRQYFTVTNVIIFFAFVLLL SGALAYCLALQLYVRRRKKLPSVLLFKKPSPIF  
 ISQRSPETQDTIHPLDEEAFKLVSPELKNLDLHGSTD SGFGSTKPSLQTEEPQFLLPDHPQADRTLGN  
 GEPVVLGDSCSSGSSNSTDSGICLQEPSLSPSTGPTWEQQVGSNSRGQDDSGIDL VQNSEGRAGDTQGG  
 ALGHHSPPEPEVPG EEDPAAVAFQGYLRQTRCAEEKATKTGCLEESPLTDGLGPKFGRCLVDEAGLHPP  
 ALAKGYLKQDPLEMTLASSGAPTQWNQPT EWSLLALSSCSDLGISDWSFAHDLAPLGVAAPGGLLGS  
 FNSDLVTLPLISSLQSSE

**TR**TRPLEQKLISEEDLAANDILDYKDDDDKV

**Chromatograms:**

[https://cdn.origene.com/chromatograms/mg2482\\_g01.zip](https://cdn.origene.com/chromatograms/mg2482_g01.zip)

**Restriction Sites:**

Sgfl-Mlul

**Cloning Scheme:**


**ACCN:** NM\_001558

**ORF Size:** 1734 bp

**OTI Disclaimer:** The molecular sequence of this clone aligns with the gene accession number as a point of reference only. However, individual transcript sequences of the same gene can differ through naturally occurring variations (e.g. polymorphisms), each with its own valid existence. This clone is substantially in agreement with the reference, but a complete review of all prevailing variants is recommended prior to use. [More info](#)

**OTI Annotation:** This clone was engineered to express the complete ORF with an expression tag. Expression varies depending on the nature of the gene.

**Components:** The ORF clone is ion-exchange column purified and shipped in a 2D barcoded Matrix tube containing 10ug of transfection-ready, dried plasmid DNA (reconstitute with 100 ul of water).

- Reconstitution Method:**
1. Centrifuge at 5,000xg for 5min.
  2. Carefully open the tube and add 100ul of sterile water to dissolve the DNA.
  3. Close the tube and incubate for 10 minutes at room temperature.
  4. Briefly vortex the tube and then do a quick spin (less than 5000xg) to concentrate the liquid at the bottom.
  5. Store the suspended plasmid at -20°C. The DNA is stable for at least one year from date of shipping when stored at -20°C.

**Note:** Plasmids are not sterile. For experiments where strict sterility is required, filtration with 0.22um filter is required.

**RefSeq:** [NM\\_001558.4](#)

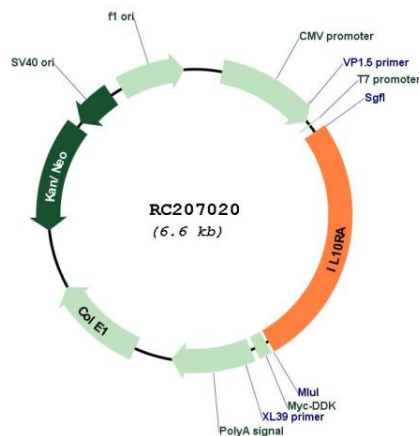
**RefSeq Size:** 3649 bp

**RefSeq ORF:** 1737 bp

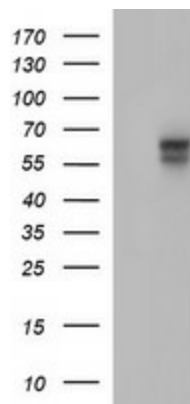
**Locus ID:** 3587

**UniProt ID:** [Q13651](#)  
**Cytogenetics:** 11q23.3  
**Protein Families:** Druggable Genome, Transmembrane  
**Protein Pathways:** Cytokine-cytokine receptor interaction, Jak-STAT signaling pathway  
**MW:** 62.9 kDa  
**Gene Summary:** The protein encoded by this gene is a receptor for interleukin 10. This protein is structurally related to interferon receptors. It has been shown to mediate the immunosuppressive signal of interleukin 10, and thus inhibits the synthesis of proinflammatory cytokines. This receptor is reported to promote survival of progenitor myeloid cells through the insulin receptor substrate-2/PI 3-kinase/AKT pathway. Activation of this receptor leads to tyrosine phosphorylation of JAK1 and TYK2 kinases. Two transcript variants, one protein-coding and the other not protein-coding, have been found for this gene. [provided by RefSeq, Jan 2009]

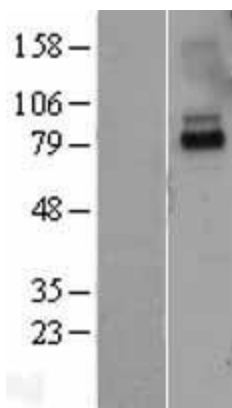
### Product images:



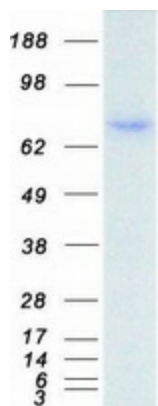
Circular map for RC207020



HEK293T cells were transfected with the pCMV6-ENTRY control (Cat# [PS100001], Left lane) or pCMV6-ENTRY IL10RA (Cat# RC207020, Right lane) cDNA for 48 hrs and lysed. Equivalent amounts of cell lysates (5 ug per lane) were separated by SDS-PAGE and immunoblotted with anti-IL10RA (Cat# [TA506929]). Positive lysates [LY400596] (100ug) and [LC400596] (20ug) can be purchased separately from OriGene.



Western blot validation of overexpression lysate (Cat# [LY400596]) using anti-DDK antibody (Cat# [TA50011-100]). Left: Cell lysates from untransfected HEK293T cells; Right: Cell lysates from HEK293T cells transfected with RC207020 using transfection reagent MegaTran 2.0 (Cat# [TT210002]).



Coomassie blue staining of purified IL10RA protein (Cat# [TP307020]). The protein was produced from HEK293T cells transfected with IL10RA cDNA clone (Cat# RC207020) using MegaTran 2.0 (Cat# [TT210002]).