

Product datasheet for RC207019

CXCR1 (NM_000634) Human Tagged ORF Clone

Product data:

Product Type:	Expression Plasmids
Product Name:	CXCR1 (NM_000634) Human Tagged ORF Clone
Tag:	Myc-DDK
Symbol:	CXCR1
Synonyms:	C-C; C-C-CKR-1; CD128; CD181; CDw128a; CKR-1; CMKAR1; IL8R1; IL8RA; IL8RBA
Mammalian Cell Selection:	Neomycin
Vector:	pCMV6-Entry (PS100001)
E. coli Selection:	Kanamycin (25 ug/mL)
ORF Nucleotide Sequence:	>RC207019 ORF sequence Red=Cloning site Blue=ORF Green=Tags(s)

TTTTGTAATACGACTCACTATAGGGCGGCCGGAATTCGTCGACTGGATCCGGTACCGAGGAGATCTGCC
GCC**CGATCGCC**

ATGTCAAATATTACAGATCCACAGATGTGGATTTTGATGATCTAAATTTCACTGGCATGCCACCTGCAG
ATGAAGATTACAGCCCCTGTAGGCTAGAACTGAGACACTCAACAAGTATGTTGTGATCATCGCCTATGC
CCTAGTGTTCCTGCTGAGCCTGTGGGAACTCCCTGGTATGCTGGTCATCTTATACAGCAGGGTCGGC
CGCTCCGCTACTGATGTCTACCTGCTGAACCTGGCCTTGGCCGACCTACTCTTTGCCCTGACCTTGCCCA
TCTGGGCCGCTCCAAGGTGAATGGCTGGATTTTGGCACATTCCTGTGCAAGGTGGTCTACTCCTGAA
GGAAGTCAACTTCTACAGTGGCATCCTGCTGTTGGCTGCATCAGTGTGGACCGTTACCTGGCCATTGTC
CATGCCACACGCACACTGACCCAGAAGCGTCACTTGGTCAAGTTTGTGTTGCTTGGCTGCTGGGGACTGT
CTATGAATCTGTCCCTGCCCTTCTCTTTTCCGCCAGGCTTACCATCCAAACAATTCCAGTCCAGTTTG
CTATGAGGTCCTGGGAAATGACACAGCAAAATGGCGGATGGTGTGCGGATCCTGCCTCACACCTTTGGC
TTCATCGTGCCGCTGTTTGTGATGCTGTTCTGCTATGGATTACCCCTGCGTACACTGTTTAAAGGCCACA
TGGGGCAGAAGCACCGAGCCATGAGGGTCATCTTGTGTCGTCCTCATCTTCTGCTTTGCTGGCTGCC
CTACAACCTGGTCTGCTGGCAGACACCCTCATGAGGACCCAGGTGATCCAGGAGAGCTGTGAGCGCCGC
ACAACATCGGCCGGCCCTGGATGCCACTGAGATTCTGGGATTCTCCATAGCTGCCTCAACCCCATCA
TCTACGCCTTATCGGCCAAAATTTTCGCCATGGATTCCCTCAAGATCCTGGCTATGCATGGCCTGGTCAG
CAAGGAGTTCTTGGCACGTCATTGTGTTACCTCCTACACTTCTCGTCTGTCATGTCTCTTCAACCTC

ACGCGTACGCGGCCGCTCGAGCAGAACTCATCTCAGAAGAGGATCTGGCAGCAATGATATCCTGGATT
ACAAGGATGACGACGATAAGGTTTAA



[View online »](#)

Protein Sequence: >RC207019 protein sequence
Red=Cloning site Green=Tags(s)

MSNITDPQMWFDDLNFTGMPPADEDYSPCRLETETLNKYVVIIAYALVFLLSLLGNSLVMLVILYSRVG
 RSVTDVYLLNLALADLLFALTLPIWAASKVNGWIFGTFLCKVVSLLKEVNFYSGILLACISVDRYLAIV
 HATRRTLQKRHLVKFVCLGCWGLSMNLSLPPFFLFRQAYHPNNSPPVCYEVLGNDTAKWRMVLRLPHTFG
 FIVPLFVMLFCYGFTRLRTLKAHMGQKHRAMRVIFAVVLIFFLLCWLPYNLVLLADTLMRTQVIQESCERR
 NNIGRALDATEILGFLHSCLNPIIYAFIQNFRHGFLKILAMHGLVSKFLARHCVTSYTSSSVNVSSNL

TRTRPLEQKLISEEDLAANDILDYKDDDDKV

Chromatograms: https://cdn.origene.com/chromatograms/mk6136_b08.zip

Restriction Sites: SgfI-MluI

Cloning Scheme:

Cloning sites used for ORF Shuttling:



* The last codon before the Stop codon of the ORF

ACCN: NM_000634

ORF Size: 1050 bp

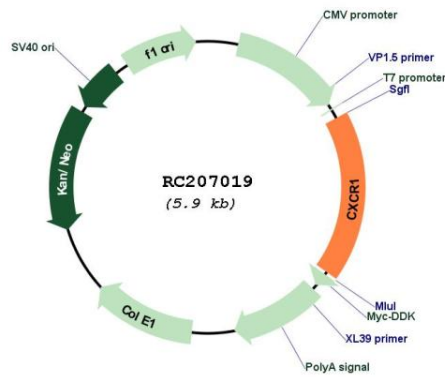
OTI Disclaimer: The molecular sequence of this clone aligns with the gene accession number as a point of reference only. However, individual transcript sequences of the same gene can differ through naturally occurring variations (e.g. polymorphisms), each with its own valid existence. This clone is substantially in agreement with the reference, but a complete review of all prevailing variants is recommended prior to use. [More info](#)

OTI Annotation: This clone was engineered to express the complete ORF with an expression tag. Expression varies depending on the nature of the gene.

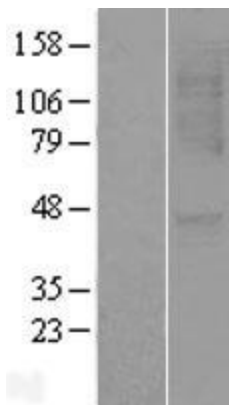
Components: The ORF clone is ion-exchange column purified and shipped in a 2D barcoded Matrix tube containing 10ug of transfection-ready, dried plasmid DNA (reconstitute with 100 ul of water).

Reconstitution Method:	<ol style="list-style-type: none">1. Centrifuge at 5,000xg for 5min.2. Carefully open the tube and add 100ul of sterile water to dissolve the DNA.3. Close the tube and incubate for 10 minutes at room temperature.4. Briefly vortex the tube and then do a quick spin (less than 5000xg) to concentrate the liquid at the bottom.5. Store the suspended plasmid at -20°C. The DNA is stable for at least one year from date of shipping when stored at -20°C.
RefSeq:	NM_000634.3
RefSeq Size:	2502 bp
RefSeq ORF:	1053 bp
Locus ID:	3577
UniProt ID:	P25024
Cytogenetics:	2q35
Domains:	7tm_1
Protein Families:	Druggable Genome, GPCR, Transmembrane
Protein Pathways:	Chemokine signaling pathway, Cytokine-cytokine receptor interaction, Endocytosis, Epithelial cell signaling in Helicobacter pylori infection
MW:	39.8 kDa
Gene Summary:	<p>The protein encoded by this gene is a member of the G-protein-coupled receptor family. This protein is a receptor for interleukin 8 (IL8). It binds to IL8 with high affinity, and transduces the signal through a G-protein activated second messenger system. Knockout studies in mice suggested that this protein inhibits embryonic oligodendrocyte precursor migration in developing spinal cord. This gene, IL8RB, a gene encoding another high affinity IL8 receptor, as well as IL8RBP, a pseudogene of IL8RB, form a gene cluster in a region mapped to chromosome 2q33-q36. [provided by RefSeq, Jul 2008]</p>

Product images:



Circular map for RC207019



Western blot validation of overexpression lysate (Cat# [LY400214]) using anti-DDK antibody (Cat# [TA50011-100]). Left: Cell lysates from untransfected HEK293T cells; Right: Cell lysates from HEK293T cells transfected with RC207019 using transfection reagent MegaTran 2.0 (Cat# [TT210002]).