

Product datasheet for RC207015

NR2E1 (NM_003269) Human Tagged ORF Clone

Product data:

Product Type:	Expression Plasmids
Product Name:	NR2E1 (NM_003269) Human Tagged ORF Clone
Tag:	Myc-DDK
Symbol:	NR2E1
Synonyms:	TLL; TLX; XTLL
Mammalian Cell Selection:	Neomycin
Vector:	pCMV6-Entry (PS100001)
E. coli Selection:	Kanamycin (25 ug/mL)
ORF Nucleotide Sequence:	>RC207015 representing NM_003269 Red=Cloning site Blue=ORF Green=Tags(s)

TTTTGTAATACGACTCACTATAGGGCGGCCGGAATTCGTCGACTGGATCCGGTACCGAGGAGATCTGCC
GCC**CGATCGC**C

ATGAGCAAGCCAGCCGGATCAACAAGCCGATTTAGATATCCCCTGCAAAGTGTGTGGCGACCGCAGCT
CGGGGAAGCACTACGGGTCTACGCTGCGACGGCTGCTCAGGTTTTTCAAACGGAGCATCCGAAGGAA
TAGGACCTATGTCTGCAAATCTGAAACCAGGGAGGCTGCCGGTGGACAAGACGCACAGAAACCAGTGC
AGGGCGTGTGGCTGAAGAAGTGTGGAAAGTCAACATGAACAAAGACGCCGTGCAGCACGAGCGGGGGC
CTCGGACGTCCACCATCCGCAAGCAAGTGGCCCTCTACTCCGTGGACACAAGGAGGAGAACGGGGCCGC
CGCGCACTTTCCCTCGGGGGCGCTCCCTGCGCCGGCTTCTTACCGCGGTACGCAGCTGGAGCCGCAC
GGCCTGGAGCTGGCCGGGTGTCCACCACTCCAGAGCGGCAGACCCTCGTGAGCCTGGCTCAGCCCACGC
CCAAGTACCCCATGAAGTGAATGGGACCCCAATGTATCTCTATGAAGTGGCCACGGAGTCGGTGTGTGA
ATCAGCTGCCAGACTTCTTTCATGAGCATCAAGTGGGCTAAGAGTGTGCCAGCCTTCTCCACGCTGTCT
TTGCAAGACCAGCTGATGCTTTTGAAGATGCTTGGAGAGAACTGTTTGTCTAGGAATAGCACAATGGG
CCATTCGGTTGATGCTAACACTCTACTGGCTGTATCTGGCATGAACGGTGACAACACAGATCCCGAA
GCTGAACAAGATCATATCTGAAATACAGGCTTTACAAGAGTGGTGGCTCGATTTAGACAACCTCCGGTTA
GATGCTACTGAATTTGCCTGTCTAAAATGCATCGTCACCTTCAAAGCCGTTCTACACATAGTGGTTCTG
AACTGAGAAGTTTCCGGAATGCTGCCGCAATTGCAGCCCTTCAAGATGAGGCTCAGCTAACGCTCAACAG
CTACATCCATACCAGATATCCCACTCAACCCTGTCGCTTTGGAAAACCTGTTGCTTTTCCAGCTTTA
CGTTCTATTAGCCCATCAACTATAGAAGAAGTGTTTTTCAAAAAAACCATCGGCAATGTGCCAATTACAA
GACTGCTTTCAGATATGTACAAATCCAGTGATATC

ACGCGTACGGGGCCGCTCGAGCAGAAACTCATCTCAGAAGAGGATCTGGCAGCAAATGATATCCTGGATT
ACAAGGATGACGACGATAAGGTTTAA



[View online >](#)

Protein Sequence: >RC207015 representing NM_003269
Red=Cloning site Green=Tags(s)

MSKPAGSTSRILDIPCKVCGDRSSGKHYGVYACDGC SGFFKRSIRRNRITYVCKSGNQGGCPVDKTHRNQC
 RACRLKKCLEVNMNKDAVQHERGPRTSTIRKQVALYFRGHKEENGAAHFPSAALPAPAFFTAVTQLEPH
 GLELAAYSTTPERQTLVSLAQPTPKYPHEVNGTPMYLYEVATESVCESAARLLFMSIKWAKSVPAFSTLS
 LQDQLMLLEDAREL FVLGIAQWAIPVDANTLLAVSGMNGDNTDSQKLNKII SEIQALQE VVARFRQLRL
 DATEFACLKCIIVFKAVPTHSGSELRSFRNAAAIAALQDEAQLTLNSYIHTRYPTQPCRFGKLLLLL PAL
 RSISPSTIEEVFFKKTIGNVPITRLLSDMYKSSDI

TRTRPLEQKLISEEDLAANDILDYKDDDDKV

Chromatograms: https://cdn.origene.com/chromatograms/mg4193_g01.zip

Restriction Sites: SgfI-MluI

Cloning Scheme:



* The last codon before the Stop codon of the ORF

ACCN: NM_003269

ORF Size: 1155 bp

OTI Disclaimer: The molecular sequence of this clone aligns with the gene accession number as a point of reference only. However, individual transcript sequences of the same gene can differ through naturally occurring variations (e.g. polymorphisms), each with its own valid existence. This clone is substantially in agreement with the reference, but a complete review of all prevailing variants is recommended prior to use. [More info](#)

OTI Annotation: This clone was engineered to express the complete ORF with an expression tag. Expression varies depending on the nature of the gene.

Components: The ORF clone is ion-exchange column purified and shipped in a 2D barcoded Matrix tube containing 10ug of transfection-ready, dried plasmid DNA (reconstitute with 100 ul of water).

Reconstitution Method:

1. Centrifuge at 5,000xg for 5min.
2. Carefully open the tube and add 100ul of sterile water to dissolve the DNA.
3. Close the tube and incubate for 10 minutes at room temperature.
4. Briefly vortex the tube and then do a quick spin (less than 5000xg) to concentrate the liquid at the bottom.
5. Store the suspended plasmid at -20°C. The DNA is stable for at least one year from date of shipping when stored at -20°C.

RefSeq: [NM_003269.5](#)

RefSeq Size: 3225 bp

RefSeq ORF: 1158 bp

Locus ID: 7101

UniProt ID: [Q9Y466](#)

Cytogenetics: 6q21

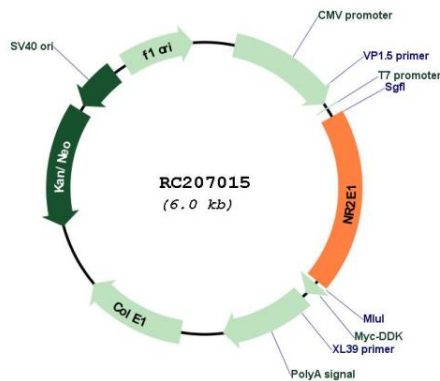
Domains: HOL1, zf-C4

Protein Families: Druggable Genome, Nuclear Hormone Receptor, Transcription Factors

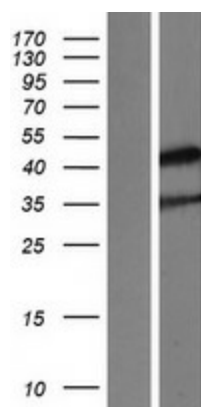
MW: 42.4 kDa

Gene Summary: The protein encoded by this gene is an orphan receptor involved in retinal development. The encoded protein also regulates adult neural stem cell proliferation and may be involved in control of aggressive behavior. Two transcript variants encoding different isoforms have been found for this gene. [provided by RefSeq, Aug 2015]

Product images:



Circular map for RC207015



Western blot validation of overexpression lysate (Cat# [LY418799]) using anti-DDK antibody (Cat# [TA50011-100]). Left: Cell lysates from untransfected HEK293T cells; Right: Cell lysates from HEK293T cells transfected with RC207015 using transfection reagent MegaTran 2.0 (Cat# [TT210002]).