

## Product datasheet for **RC207012**

### TCCR (IL27RA) (NM\_004843) Human Tagged ORF Clone

#### Product data:

Product Type:	Expression Plasmids
Product Name:	TCCR (IL27RA) (NM_004843) Human Tagged ORF Clone
Tag:	Myc-DDK
Symbol:	TCCR
Synonyms:	CRL1; IL-27RA; IL27R; TCCR; WSX1; zcytor1
Mammalian Cell Selection:	Neomycin
Vector:	pCMV6-Entry (PS100001)
E. coli Selection:	Kanamycin (25 ug/mL)



[View online »](#)

**ORF Nucleotide Sequence:**

>RC207012 representing NM\_004843.  
 Blue=ORF Red=Cloning site Green=Tag(s)

```
GCTCGTTTAGTGAACCGTCAGAATTTTGTAAACGACTCACTATAGGGCGGCCGGGAATTCGTGCGACTG
GATCCGGTACCGAGGAGATCTGCCGCCCGGATCGCC
ATGCGGGGAGGCAGGGGCGCCCTTTCTGGCTGTGGCCGCTGCCAAGCTGGCGCTGCTGCCTCTGTTG
TTGGTGCTTTTCCAGCGGACGCTCCCCAGGGCAGCGCCGGGCCACTGCAGTGCTACGGAGTTGGACCC
TTGGGCGACTTGAAGTCTCGTGGGAGCCTTTGGGGACCTGGGAGCCCCCTCCGAGTTACACCTCCAG
AGCCAAAAGTACCGTTCCAACAAAACCCAGACTGTGGCAGTGGCAGCCGACGGAGCTGGGTGGCCATT
CCTCGGGAACAGCTACCATGTCTGACAAACTCCTTGTCTGGGGCACTAAGGCAGGCCAGCCTCTCTGG
CCCCCGTCTTGTGAACCTAGAAACCCAAATGAAGCCAAACGCCCCCGGCTGGGCCCTGACGTGGAC
TTTTCCGAGGATGACCCCTGGAGGCCACTGTCCATTGGGCCCACTACATGGCCATCTATAAAGTT
CTGATCTGCCAGTCCACTACCGAAGATGTCAGGAGGCGGCTGGACCCTGCTGGAACCGGAGCTGAAG
ACCATACCCCTGACCCCTGTTGAGATCCAAGATTTGGAGCTAGCCACTGGCTACAAAGTGTATGGCCGC
TGCCGGATGGAGAAAGAAGAGGATTTGTGGGGCAGTGGAGCCCCATTTTGTCTCCAGACACCGCCT
TCTGCTCCAAAAGATGTGTGGGTATCAGGGAACCTCTGTGGGACGCTGGAGGAGAGGAACCTTTGCTT
CTATGGAAGGCCAGGGCCCTGTGTGCAGGTGAGCTACAAAGTCTGGTTCTGGGTTGGAGTCTGTGAG
CTGAGTCCAGAAGGAATTACCTGCTGCTGCTCCCTAATCCCAGTGGGGCGGAGTGGGCCAGGGTGTCC
GCTGTCAACGCCACAAGCTGGGAGCCTCTACCAACCTCTTTTGGTCTGCTTGGATTACGCCTCTGCC
CCCCGTAGCGTGGCAGTCAAGCAGCATCGCTGGGAGCACGGAGCTACTGGTACCTGGCAACCGGGCCCT
GGGGAACCACTGGAGCATGTAGTGGACTGGGCTCGAGATGGGGACCCCTGGAGAACTCAACTGGGTC
CGGTTCCCCCTGGGAACCTCAGTGTCTGTTACCAGGGAATTTCACTGTGGGGTCCCTATCGAATC
ACTGTGACCGCAGTCTCTGCTTCAAGCTTGGCCTCTGCATCCTCGTCTGGGGTTCAGGGAGAAATTA
GACCCCTAGTGGGGCAACGCTTTGGCGACTCCAAGATGCCCTCCAGGGACCCCGCCATAGCGTGG
GGAGAGTCCCAAGCACCAAGCTTCGAGGCCACCTCACCCACTACACCTTGTGTGCACAGAGTGGAAAC
AGCCCTCCGCTGCTGATGAATGTGAGTGGCAACACACAGAGTGTACCCTGCCTGACCTTCTTGGGGT
CCCTGTGAGCTGTGGGTGACAGCATCTACCATCGTGGACAGGGCCCTCTGGTCCCATCTCCGGCTT
CATCTACCAGATAACACCCTGAGGTGAAAGTTCTGCCGGCATCCTATTCTTGTGGGGTGTCTCTG
TTGGGGTGTGGCCTGAGCCTGGCCACCTCTGGAAGGTGCTACCACCTAAGGCACAAAGTGTGCCCCGC
TGGGTCTGGGAGAAAGTCTCTGATCCTGCAACAGCAGTTCAGGCCAGCCCCACATGGAGCAAGTACCT
GAGGCCAGCCCTTGGGACTTGCCATCCTGGAAGTGGAGGAGATGGAGCCCCCGCGGTTATGGAG
TCCTCCAGCCCGCCAGGCCACCGCCCGCTTACTCTGGGTATGAGAAGCACTTCTGCCACACCT
GAGGAGCTGGGCCTTCTGGGGCCCCCAGGCCACAGGTTCTGGCC
AGCGGACCGACGCGTACGCGGCCGCTCGAGCAGAAACTCATCTCAGAAGAGGATCTGGCAGCAAATGAT
ATCCTGGATTACAAGGATGACGACGATAAGGTTTAA
```

**Protein Sequence:**

>Peptide sequence encoded by RC207012  
 Blue=ORF Red=Cloning site Green=Tag(s)

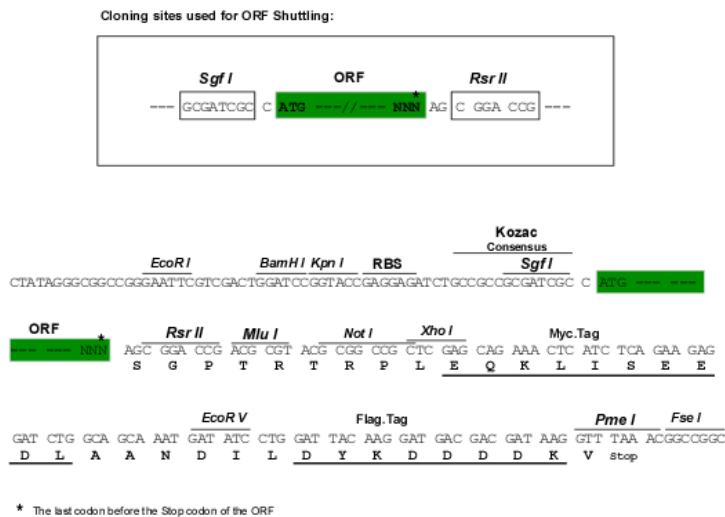
```
MRGGRGAPFWLWPLPKLALLPLLWVLFQRTRPQGSAGPLQCYGVGPLGDLNCSWEPLGDLGAPSELHLQ
SQKYRSNKTQTVAVAAGRSWVAIPREQLTMSDKLLVWGTKAGQPLWPPVFNLETQMKPNAPRLGPDVD
FSEDDPLEATVHWAPPTWPSHKVLICQFHYRRCQEAAWTLLLEPELKTIPVETQLELATGYKVVYGR
CRMEKEEDLWGEWSPILSFQTPPSAPKDVWVSGNLCGTPGGEPLLLWKAPGPCVQVSYKVVWVGGRE
LSPEGITCCSLIPSGAEWARVSAVNATSWEPLTNLSLVCLDSASAPRSVAVSSIAGSTELLVTWQPGP
GEPLHVVVDWARDGDPLEKLNWVRLPPGNLSALLPGNFTVGVPIRITVAVSASGLASASSVWGFREL
APLVGPTLWRLQDAPPGTPIAWGEVPRHQLRGHLTHYTLCAQSGTSPSVMNVSNTQSVTLPLDLPWG
PCELWVTAStIAGQPPGPILRLHLPDNTLRWKVLPGLFLWGLFLLGCGLSLATSGRCYHLRHKVLP
WVWEKVPDPANSSSQPHMEQVPEAQPLGDLPILEVEEMEPVMESSQPAQATAPLDSGYEKHFLPTP
EELGLLGP RPQVLA
SGPTRTRPLEQKLISEEDLAANDILDYKDDDDKV
```

Recombinant protein using RC207012 also available, [TP307012](#)

**Chromatograms:** [https://cdn.origene.com/chromatograms/mg2950\\_g01.zip](https://cdn.origene.com/chromatograms/mg2950_g01.zip)

**Restriction Sites:** SgfI-RsrII

**Cloning Scheme:**



**ACCN:** NM\_004843

**ORF Size:** 1908 bp

**OTI Disclaimer:** The molecular sequence of this clone aligns with the gene accession number as a point of reference only. However, individual transcript sequences of the same gene can differ through naturally occurring variations (e.g. polymorphisms), each with its own valid existence. This clone is substantially in agreement with the reference, but a complete review of all prevailing variants is recommended prior to use. [More info](#)

**OTI Annotation:** This clone was engineered to express the complete ORF with an expression tag. Expression varies depending on the nature of the gene.

**Components:** The ORF clone is ion-exchange column purified and shipped in a 2D barcoded Matrix tube containing 10ug of transfection-ready, dried plasmid DNA (reconstitute with 100 ul of water).

**Reconstitution Method:**

1. Centrifuge at 5,000xg for 5min.
2. Carefully open the tube and add 100ul of sterile water to dissolve the DNA.
3. Close the tube and incubate for 10 minutes at room temperature.
4. Briefly vortex the tube and then do a quick spin (less than 5000xg) to concentrate the liquid at the bottom.
5. Store the suspended plasmid at -20°C. The DNA is stable for at least one year from date of shipping when stored at -20°C.

**RefSeq:** [NM\\_004843.4](#)

**RefSeq Size:** 3258 bp

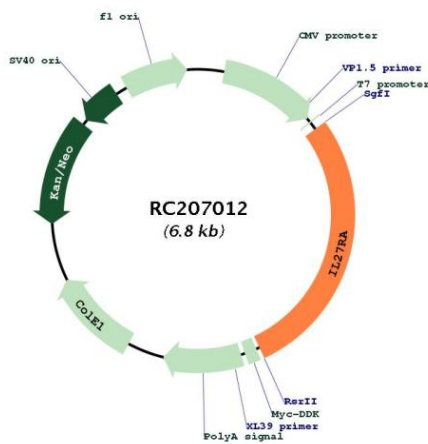
**RefSeq ORF:** 1911 bp

**Locus ID:** 9466

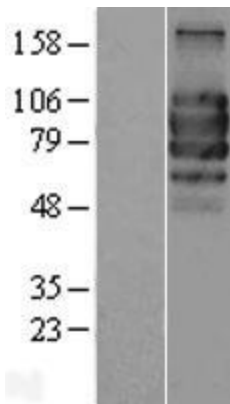
**UniProt ID:** [Q6UWB1](#)  
**Cytogenetics:** 19p13.12  
**Domains:** FN3  
**Protein Families:** Druggable Genome, Transmembrane  
**MW:** 69.5 kDa

**Gene Summary:** In mice, CD4+ helper T-cells differentiate into type 1 (Th1) cells, which are critical for cell-mediated immunity, predominantly under the influence of IL12. Also, IL4 influences their differentiation into type 2 (Th2) cells, which are critical for most antibody responses. Mice deficient in these cytokines, their receptors, or associated transcription factors have impaired, but are not absent of, Th1 or Th2 immune responses. This gene encodes a protein which is similar to the mouse T-cell cytokine receptor Tccr at the amino acid level, and is predicted to be a glycosylated transmembrane protein. [provided by RefSeq, Jul 2008]

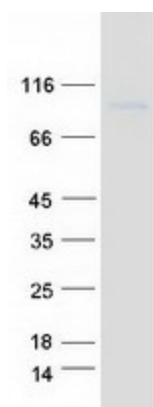
### Product images:



Circular map for RC207012



Western blot validation of overexpression lysate (Cat# [LY417709]) using anti-DDK antibody (Cat# [TA50011-100]). Left: Cell lysates from untransfected HEK293T cells; Right: Cell lysates from HEK293T cells transfected with RC207012 using transfection reagent MegaTran 2.0 (Cat# [TT210002]).



Coomassie blue staining of purified IL27RA protein (Cat# [TP307012]). The protein was produced from HEK293T cells transfected with IL27RA cDNA clone (Cat# RC207012) using MegaTran 2.0 (Cat# [TT210002]).