

Product datasheet for RC207007

C7orf16 (PPP1R17) (NM_006658) Human Tagged ORF Clone

Product data:

Product Type:	Expression Plasmids
Product Name:	C7orf16 (PPP1R17) (NM_006658) Human Tagged ORF Clone
Tag:	Myc-DDK
Symbol:	C7orf16
Synonyms:	C7orf16; GSBS
Mammalian Cell Selection:	Neomycin
Vector:	pCMV6-Entry (PS100001)
E. coli Selection:	Kanamycin (25 ug/mL)
ORF Nucleotide Sequence:	>RC207007 ORF sequence Red=Cloning site Blue=ORF Green=Tags(s)

TTTTGTAATACGACTCACTATAGGGCGGCCGGAATTCGTCGACTGGATCCGGTACCGAGGAGATCTGCC
 GCCCGCATCGCC

ATGATGTCCACTGAGCAATGCAGCCACTGGAAGTCTCAGAAGACAGACTGGACAAGCTAGACCCTCGTT
 GCAGCCACTTAGATGATCTTTCAGACCAGTTTCATTAAGGACTGTGATCTCAAAAAGAAGCCTAGAAAGGG
 AAAAAATGTACAGGCCACCCTGAATGTTGAGTCAGACCAAAAAAACCAGGAGGAAAGATACCCGGCG
 CTGCACATCCCACCTTTCATACCAGGTGTGTTTTCAGAACATTTAATTAAGATACGATGTTCAAGAGA
 GACATCCAAAGGGCAAAATGATCCCTGTTCTTCATAAAGTACCTGGAACAGAAAAAGCCAAGGAGAAA
 AGACACACCTGCCCTGCACATGTCCCCCTTGCAGCAGGTGTGACATTGCTCAGGGATGAGAGACCCAAA
 GCAATCGTGGAAGATGACGAAAAGGATGGTGACAAGATAGCTATT

ACGCGTACGCGGCCGCTCGAGCAGAACTCATCTCAGAAGAGGATCTGGCAGCAAATGATATCCTGGATT
 ACAAGGATGACGACGATAAGGTTTAA

Protein Sequence:	>RC207007 protein sequence Red=Cloning site Green=Tags(s)
-------------------	--

MMSTEQMQLPVESEDRLDKLDPRCSHLDDLSDQFIKDCDLKKKPRKGKNVQATLNVEDSQKKPRRKDTPA
 LHIPPFIPIGVFSEHLIKRYDVQERHPKGMIPVLHNTDLEQKKPRRKDTPALHMSFPAAGVTLLRDERPK
 AIVEDDEKDGDKIAI

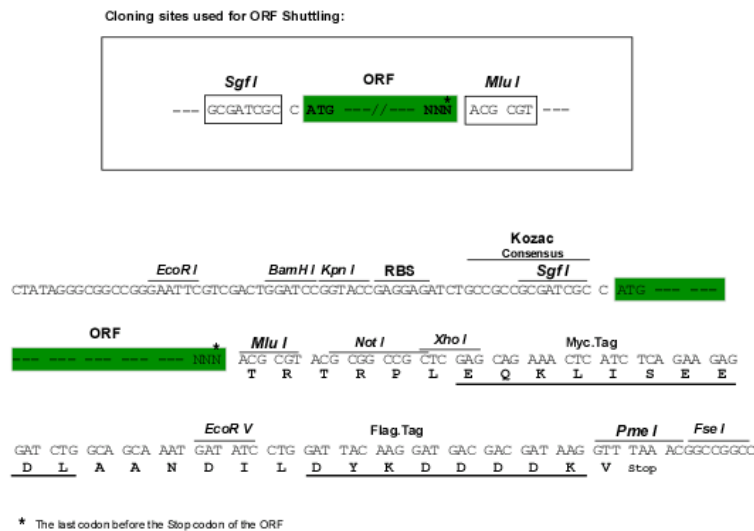
TRTRPLEQKLISEEDLAANDILDYKDDDDKV

Chromatograms:	https://cdn.origene.com/chromatograms/mk6333_a10.zip
----------------	---


[View online »](#)

Restriction Sites: SgfI-MluI

Cloning Scheme:



ACCN: NM_006658

ORF Size: 465 bp

OTI Disclaimer: The molecular sequence of this clone aligns with the gene accession number as a point of reference only. However, individual transcript sequences of the same gene can differ through naturally occurring variations (e.g. polymorphisms), each with its own valid existence. This clone is substantially in agreement with the reference, but a complete review of all prevailing variants is recommended prior to use. [More info](#)

OTI Annotation: This clone was engineered to express the complete ORF with an expression tag. Expression varies depending on the nature of the gene.

Components: The ORF clone is ion-exchange column purified and shipped in a 2D barcoded Matrix tube containing 10ug of transfection-ready, dried plasmid DNA (reconstitute with 100 ul of water).

Reconstitution Method:

1. Centrifuge at 5,000xg for 5min.
2. Carefully open the tube and add 100ul of sterile water to dissolve the DNA.
3. Close the tube and incubate for 10 minutes at room temperature.
4. Briefly vortex the tube and then do a quick spin (less than 5000xg) to concentrate the liquid at the bottom.
5. Store the suspended plasmid at -20°C. The DNA is stable for at least one year from date of shipping when stored at -20°C.

Note: Plasmids are not sterile. For experiments where strict sterility is required, filtration with 0.22um filter is required.

RefSeq: [NM_006658.2](#), [NP_006649.1](#)

RefSeq Size: 1966 bp

RefSeq ORF: 468 bp

Locus ID: 10842
UniProt ID: [O96001](#)

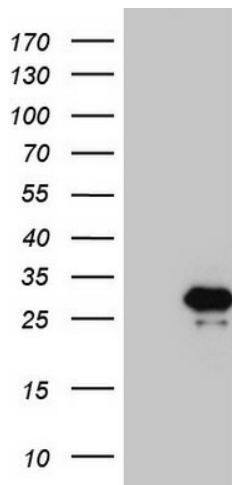
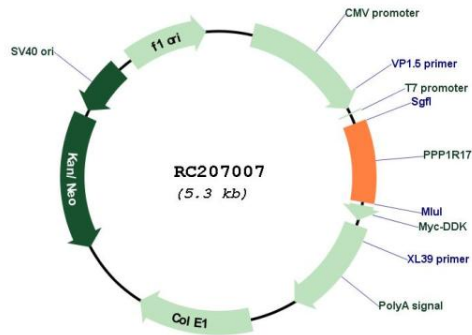
Cytogenetics: 7p14.3

Protein Pathways: Long-term depression

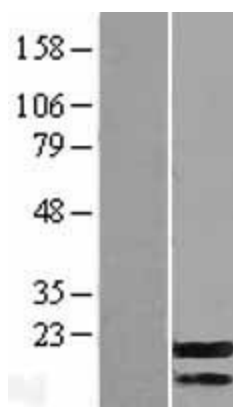
MW: 17.9 kDa

Gene Summary: The protein encoded by this gene is found primarily in cerebellar Purkinje cells, where it functions as a protein phosphatase inhibitor. The encoded protein is a substrate for cGMP-dependent protein kinase. An allele of this gene was discovered that increases susceptibility to hypercholesterolemia. Two transcript variants encoding different isoforms have been found for this gene. [provided by RefSeq, Jul 2010]

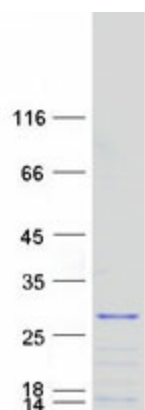
Product images:



HEK293T cells were transfected with the pCMV6-ENTRY control (Cat# [PS100001], Left lane) or pCMV6-ENTRY C7ORF16 (Cat# RC207007, Right lane) cDNA for 48 hrs and lysed. Equivalent amounts of cell lysates (5 ug per lane) were separated by SDS-PAGE and immunoblotted with anti-C7ORF16 (Cat# [TA808959])(1:2000). Positive lysates [LY416501] (100ug) and [LC416501] (20ug) can be purchased separately from OriGene.



Western blot validation of overexpression lysate (Cat# [LY416501]) using anti-DDK antibody (Cat# [TA50011-100]). Left: Cell lysates from untransfected HEK293T cells; Right: Cell lysates from HEK293T cells transfected with RC207007 using transfection reagent MegaTran 2.0 (Cat# [TT210002]).



Coomassie blue staining of purified PPP1R17 protein (Cat# [TP307007]). The protein was produced from HEK293T cells transfected with PPP1R17 cDNA clone (Cat# RC207007) using MegaTran 2.0 (Cat# [TT210002]).