

Product datasheet for RC207004

Fos B (FOSB) (NM_006732) Human Tagged ORF Clone

Product data:

Product Type:	Expression Plasmids
Product Name:	Fos B (FOSB) (NM_006732) Human Tagged ORF Clone
Tag:	Myc-DDK
Symbol:	Fos B
Synonyms:	AP-1; G0S3; GOS3; GOSB
Mammalian Cell Selection:	Neomycin
Vector:	pCMV6-Entry (PS100001)
E. coli Selection:	Kanamycin (25 ug/mL)
ORF Nucleotide Sequence:	>RC207004 ORF sequence Red=Cloning site Blue=ORF Green=Tags(s)

TTTTGTAATACGACTCACTATAGGGCGGCCGGAATTCGTCGACTGGATCCGGTACCGAGGAGATCTGCC
GCC**CGATCGCC**

ATGTTTCAGGCTTTCCCGGAGACTACGACTCCGGCTCCCGGTGCAGCTCCTCACCTCTGCCGAGTCTC
AATATCTGTCTTCGGTGGACTCCTTCGGCAGTCCACCCACCGCCGCGCCTCCAGGAGTGCGCCGGTCT
CGGGGAAATGCCCGTTCCTTCGTGCCACGGTACCAGCGATCACAACCAGCCAGGACCTCCAGTGGCTT
GTGCAACCCACCCTCATCTTCCATGGCCAGTCCCAGGGCAGCCACTGGCCTCCAGCCCCGGTCCG
TCGACCCCTACGACATGCCGGGAACCAGCTACTCCACACCAGGCATGAGTGGCTACAGCAGTGGCGGAGC
GAGTGGCAGTGGTGGCCTTCCACCAGCGAACTACCAGTGGCCTGGCCTGCCCGCCAGCCCGAGCC
CGGCCTAGGAGACCCCGAGAGGAGACGCTACCCAGAGGAAGAGGAGAAGCGAAGGGTGCGCCGGGAAC
GAAATAAACTAGCAGCAGCTAAATGCAGGAACCGCGGAGGGAGCTGACCGACCGACTCCAGGCGGAGAC
AGATCAGTTGGAGGAAGAAAAGCAGAGCTGGAGTCGGAGATCGCCGAGCTCAAAGGAGAAGGAACGT
CTGGAGTTGTGCTGGTGGCCACAAACCGGCTGCAAGATCCCCACGAAGAGGGGCCCGGGCCGGGCC
CGCTGGCGGAGGTGAGAGATTTGCCGGGCTCAGCACCGGCTAAGGAAGATGGCTTACGCTGGCTGCTGCC
GCCCGCCACCACCGCCCTGCCCTTCCAGACCAGCCAAGACGCACCCCCAACCTGACGGCTTCTCTC
TTTACACACAGTGAAGTTCAAGTCTCGCGACCCCTTCCCGTTGTTAACCTTCGTACACTTCTTCGT
TTGTCTCACCTGCCCGGAGGTCTCCGCTTCGCGGCGCCAAACGCACCAGCGGAGTACCAGCCTTC
CGATCCCCTGAACTCGCCCTCCCTCCTCGCTCTG

ACGCGTACGCGGCCGCTCGAGCAGAACTCATCTCAGAAGAGGATCTGGCAGCAAATGATATCCTGGATT
ACAAGGATGACGACGATAAGGTTTAA



[View online »](#)

Protein Sequence: >RC207004 protein sequence
Red=Cloning site Green=Tags(s)

MFQAFPGDYDSGSRSSSPAESQYLSSVDSFGSPPTAAASQECAGLGEMPGSFVPTVTAITTSQDLQWL
 VQPTLISSMAQSQGQPLASQPPVVDPYDMPGTSYSTPGMGYSSGGASGSGGPSTSGTTSQGGPARPARA
 RPRRPREETLTPEEEEEKRRVRRERNKLAALKCRNRRRELTDRLQAETDQLEEEKAELESEIAELQKEKER
 LEFVLVAHKPGCKIPYEEGPGGPLAEVRDLPGSAPAKEDGFSWLLPPPPPPPLPFQTSQDAPPNLTASL
 FTHSEVQLGDPFPVNPSTSSVFLTCPEVSAFAGAQRSGSDQPSDPLNSPSSLAL

TRTRPLEQKLISEEDLAANDILDYKDDDDKV

Chromatograms: https://cdn.origene.com/chromatograms/mk6006_f08.zip

Restriction Sites: SgfI-MluI

Cloning Scheme:



ACCN: NM_006732

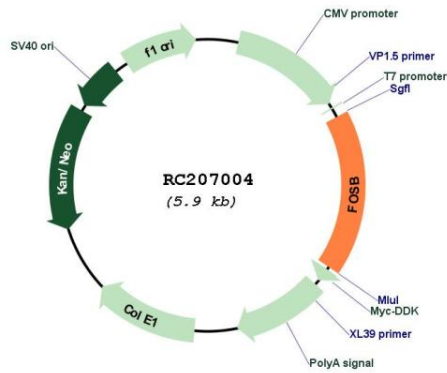
ORF Size: 1014 bp

OTI Disclaimer: Due to the inherent nature of this plasmid, standard methods to replicate additional amounts of DNA in E. coli are highly likely to result in mutations and/or rearrangements. Therefore, OriGene does not guarantee the capability to replicate this plasmid DNA. Additional amounts of DNA can be purchased from OriGene with batch-specific, full-sequence verification at a reduced cost. Please contact our customer care team at custsupport@origene.com or by calling 301.340.3188 option 3 for pricing and delivery.

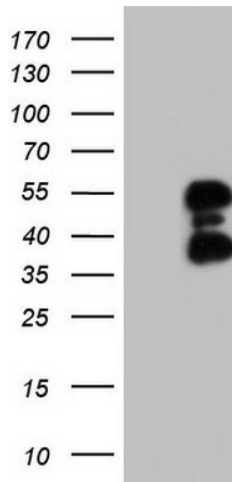
The molecular sequence of this clone aligns with the gene accession number as a point of reference only. However, individual transcript sequences of the same gene can differ through naturally occurring variations (e.g. polymorphisms), each with its own valid existence. This clone is substantially in agreement with the reference, but a complete review of all prevailing variants is recommended prior to use. [More info](#)

OTI Annotation:	This clone was engineered to express the complete ORF with an expression tag. Expression varies depending on the nature of the gene.
Components:	The ORF clone is ion-exchange column purified and shipped in a 2D barcoded Matrix tube containing 10ug of transfection-ready, dried plasmid DNA (reconstitute with 100 ul of water).
Reconstitution Method:	<ol style="list-style-type: none">1. Centrifuge at 5,000xg for 5min.2. Carefully open the tube and add 100ul of sterile water to dissolve the DNA.3. Close the tube and incubate for 10 minutes at room temperature.4. Briefly vortex the tube and then do a quick spin (less than 5000xg) to concentrate the liquid at the bottom.5. Store the suspended plasmid at -20°C. The DNA is stable for at least one year from date of shipping when stored at -20°C.
Note:	Plasmids are not sterile. For experiments where strict sterility is required, filtration with 0.22um filter is required.
RefSeq:	NM_006732.3
RefSeq Size:	3776 bp
RefSeq ORF:	1017 bp
Locus ID:	2354
UniProt ID:	P53539
Cytogenetics:	19q13.32
Domains:	BRLZ
Protein Families:	Druggable Genome, Transcription Factors
MW:	35.9 kDa
Gene Summary:	<p>The Fos gene family consists of 4 members: FOS, FOSB, FOSL1, and FOSL2. These genes encode leucine zipper proteins that can dimerize with proteins of the JUN family, thereby forming the transcription factor complex AP-1. As such, the FOS proteins have been implicated as regulators of cell proliferation, differentiation, and transformation. Alternatively spliced transcript variants encoding different isoforms have been found for this gene. [provided by RefSeq, Jul 2008]</p>

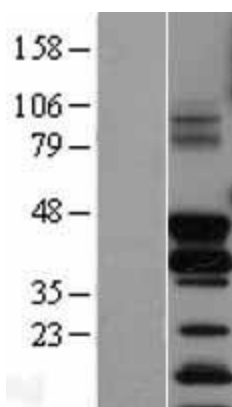
Product images:



Circular map for RC207004



HEK293T cells were transfected with the pCMV6-ENTRY control (Cat# [PS100001], Left lane) or pCMV6-ENTRY FOSB (Cat# RC207004, Right lane) cDNA for 48 hrs and lysed. Equivalent amounts of cell lysates (5 ug per lane) were separated by SDS-PAGE and immunoblotted with anti-FOSB (Cat# [TA804193]). Positive lysates [LY402011] (100ug) and [LC402011] (20ug) can be purchased separately from OriGene.



Western blot validation of overexpression lysate (Cat# [LY402011]) using anti-DDK antibody (Cat# [TA50011-100]). Left: Cell lysates from untransfected HEK293T cells; Right: Cell lysates from HEK293T cells transfected with RC207004 using transfection reagent MegaTran 2.0 (Cat# [TT210002]).