

Product datasheet for **RC207003**

LILRA3 (NM_006865) Human Tagged ORF Clone

Product data:

Product Type:	Expression Plasmids
Product Name:	LILRA3 (NM_006865) Human Tagged ORF Clone
Tag:	Myc-DDK
Symbol:	LILRA3
Synonyms:	CD85E; HM31; HM43; ILT-6; ILT6; LIR-4; LIR4
Mammalian Cell Selection:	Neomycin
Vector:	pCMV6-Entry (PS100001)
E. coli Selection:	Kanamycin (25 ug/mL)



[View online »](#)

ORF Nucleotide Sequence:

>RC207003 ORF sequence
 Red=Cloning site Blue=ORF Green=Tags(s)

TTTTGTAATACGACTCACTATAGGGCGGCCGGGAATTCGTCGACTGGATCCGGTACCGAGGAGATCTGCC
 GCC**CGGATCGCC**

ATGACCTCCATCCTCACGGTCTGATCTGTCTCGGGCTGAGCCTGGACCCAGGACCCACGTGCAGGCAG
 GGCCCTCCCAAGCCACCCTCTGGGCTGAGCCAGGCTCTGTGATCACCAAGGGAGTCTGTGACCCCT
 CAGGTGTAGGGGAGCCTGGAGACGCAGGAGTACCATCTATATAGAGAAAAGAAAACAGCACTCTGGATT
 ACACGGATCCCACAGGAGCTTGTGAAGAAGGGCCAGTTCCCCATCCTATCCATCACCTGGGAACATGCAG
 GGCGGTATTGCTGTATCTATGGCAGCCACACTGTAGGCCCTCAGAGAGCAGTGACCCCTGGAGCTGGT
 GGTGACAGGAGCCTACAGCAAACCCACCCTCTCAGCTCTGCCAGCCCTGTGGTACCTCAGGAGGGAA
 GTGACCATCCAGTGTGACTCACAGGTGGCATTGATGGCTTCATTCTGTGAAGGAAGGAGAAGATGAAC
 ACCACAATGCCTGAACCCCATTCCCATGCCCGTGGGTATCCCGGGCCATCTTCTCCGTGGGCCCGGT
 GAGCCCAAGTCGAGGTGGTCTGACAGGTGCTATGGTTATGACTCGCGCGCTCCCTATGTGTGGTCTCTA
 CCCAGTGATCTCCTGGGGCTCCTGGTCCCAGGTGTTTCTAAGAAGCCATCACTCTCAGTGACCGGGTCT
 CTGTCGTGGCCCTGGGGAGAAGCTGACCTCCAGTGTGGCTCTGATGCCGGCTACGACAGATTTGTTCT
 GTACAAGGAGTGGGGACGTGACTTCTCCAGCGCCCTGGCCGGCAGCCCAAGGCTGGGCTCTCCAGGCC
 AACTTCACCCTGGGCCCTGTGAGCCGCTCTACGGGGCCAGTACACATGCTCCGGTGCATAACAACCTCT
 CCTCCGAGTGGTGGCCCCAGCGACCCCTGGACATCCTGATCACAGGACAGATCCGTGCCAGACCCCTT
 CCTCTCCGTGGCGCCGGGCCACAGTGGCCTCAGGAGAGAACGTGACCCCTGCTGTGTGAGTACAGGGA
 GGGATGCACACTTTCCTTTTGACCAAGGAGGGGGCAGCTGATCCCGCTGCGTCTAAAAATCAAAGCGCC
 AATCTCATAAGTACCAGGCTGAATCCCATGAGTCTGACCTCGGCCACGCGGGGACCTACAGGTG
 CTACGGCTCACTCAGCTCCAACCCCTACCTGCTGACTCACCCAGTGACCCCTGGAGCTCGTGGTCTCA
 GGAGCAGCTGAGACCCTCAGCCACCACAAAACAGTCCGACTCCAAGGCTGGTGA

ACGCGTACGCGGCCGCTCGAGCAGAACTCATCTCAGAAGAGGATCTGGCAGCAATGATATCCTGGATT
 ACAAGGATGACGACGATAAGGTTTAA

Protein Sequence:

>RC207003 protein sequence
 Red=Cloning site Green=Tags(s)

MTSILTVL ICLGLSLDPRTHVQAGPLPKPTLWAEPGSVITQGSPVTLRCQGSLETQEYHLYREKKTALWI
 TRIPQELVKKGQFPILSITWEHAGRYCCYGSHTVGLSESSDPLELVVTGAYSKPTLSALPSPVVTSGGN
 VTIQCDSQVAFDGFILCKEGEDHPQCLNSHSHARGSSRAIFSVGPVSPSRWSYRCYGYDSRAPYVWSL
 PSDLLGLLVPGVSKKPSLSVQPGPVVAPGEKLTFCGSDAGYDRFVLYKEWGRDFLQRPGRQPQAGLSQA
 NFTLGPVSRSYGGQYTCGAYNLSSEWSAPSDPLDILITGQIRARPFLSVRPGPTVASGENVTLLCQSQG
 GMHTFLLTKEGAADSPLRLKSKRQSHKYQAEFPMSPVTSAHAGTYRCYGLSSNPYLLTHPSDPLELVVS
 GAAETLSPPQNKSDSKAGE

TRTRPLEQKLISEEDLAANDILDYKDDDDKV

Chromatograms:

https://cdn.origene.com/chromatograms/mk6519_a02.zip

Restriction Sites:

Sgfl-Mlul

Cloning Scheme:


ACCN: NM_006865

ORF Size: 1317 bp

OTI Disclaimer: The molecular sequence of this clone aligns with the gene accession number as a point of reference only. However, individual transcript sequences of the same gene can differ through naturally occurring variations (e.g. polymorphisms), each with its own valid existence. This clone is substantially in agreement with the reference, but a complete review of all prevailing variants is recommended prior to use. [More info](#)

OTI Annotation: This clone was engineered to express the complete ORF with an expression tag. Expression varies depending on the nature of the gene.

Components: The ORF clone is ion-exchange column purified and shipped in a 2D barcoded Matrix tube containing 10ug of transfection-ready, dried plasmid DNA (reconstitute with 100 ul of water).

Reconstitution Method:

1. Centrifuge at 5,000xg for 5min.
2. Carefully open the tube and add 100ul of sterile water to dissolve the DNA.
3. Close the tube and incubate for 10 minutes at room temperature.
4. Briefly vortex the tube and then do a quick spin (less than 5000xg) to concentrate the liquid at the bottom.
5. Store the suspended plasmid at -20°C. The DNA is stable for at least one year from date of shipping when stored at -20°C.

RefSeq: [NM_006865.2](#), [NP_006856.2](#)

RefSeq Size: 1608 bp

RefSeq ORF: 1320 bp

Locus ID: 11026

UniProt ID: [Q8N6C8](#)

Cytogenetics: 19q13.4

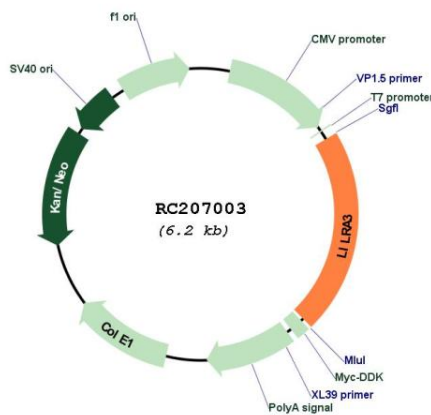
Domains: ig, IGc2, IG

Protein Families: Secreted Protein

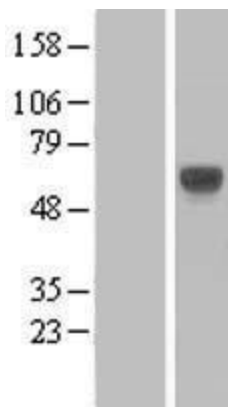
MW: 47.5 kDa

Gene Summary: This gene encodes a member of a family of immunoreceptors that are expressed predominantly in monocytes and B cells, and at lower levels in dendritic cells and natural killer cells. The encoded protein lacks the transmembrane region found in other members of this family. It acts as a soluble receptor for class I major histocompatibility complex (MHC) antigens. Alternatively spliced transcript variants encoding different isoforms have been found. This gene is located in a cluster of related genes on chromosome 19 and is polymorphic in human populations, with many individuals containing a deletion of this genomic region. [provided by RefSeq, Mar 2014]

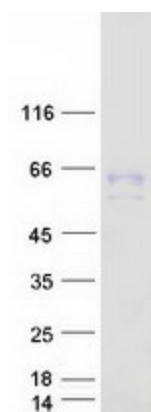
Product images:



Circular map for RC207003



Western blot validation of overexpression lysate (Cat# [LY416372]) using anti-DDK antibody (Cat# [TA50011-100]). Left: Cell lysates from untransfected HEK293T cells; Right: Cell lysates from HEK293T cells transfected with RC207003 using transfection reagent MegaTran 2.0 (Cat# [TT210002]).



Coomassie blue staining of purified LILRA3 protein (Cat# [TP307003]). The protein was produced from HEK293T cells transfected with LILRA3 cDNA clone (Cat# RC207003) using MegaTran 2.0 (Cat# [TT210002]).