

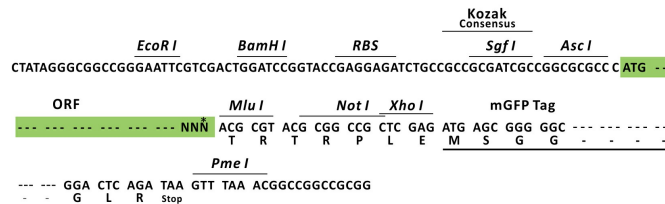
Product datasheet for RC207002L2

CA5B (NM_007220) Human Tagged Lenti ORF Clone

Product data:

Product Type:	Expression Plasmids
Product Name:	CA5B (NM_007220) Human Tagged Lenti ORF Clone
Tag:	mGFP
Symbol:	CA5B
Synonyms:	CA-VB; CAVB
Mammalian Cell Selection:	None
Vector:	pLenti-C-mGFP (PS100071)
E. coli Selection:	Chloramphenicol (34 ug/mL)
ORF Nucleotide Sequence:	The ORF insert of this clone is exactly the same as(RC207002).
Restriction Sites:	AscI-MluI
Cloning Scheme:	

Cloning sites used for ORF Shuttling:



* The last codon before the Stop codon of the ORF.

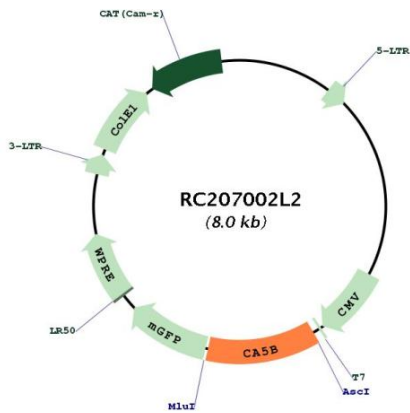
ACCN:	NM_007220
ORF Size:	951 bp



[View online »](#)

OTI Disclaimer:	The molecular sequence of this clone aligns with the gene accession number as a point of reference only. However, individual transcript sequences of the same gene can differ through naturally occurring variations (e.g. polymorphisms), each with its own valid existence. This clone is substantially in agreement with the reference, but a complete review of all prevailing variants is recommended prior to use. More info
OTI Annotation:	This clone was engineered to express the complete ORF with an expression tag. Expression varies depending on the nature of the gene.
Components:	The ORF clone is ion-exchange column purified and shipped in a 2D barcoded Matrix tube containing 10ug of transfection-ready, dried plasmid DNA (reconstitute with 100 ul of water).
Reconstitution Method:	<ol style="list-style-type: none">1. Centrifuge at 5,000xg for 5min.2. Carefully open the tube and add 100ul of sterile water to dissolve the DNA.3. Close the tube and incubate for 10 minutes at room temperature.4. Briefly vortex the tube and then do a quick spin (less than 5000xg) to concentrate the liquid at the bottom.5. Store the suspended plasmid at -20°C. The DNA is stable for at least one year from date of shipping when stored at -20°C.
RefSeq:	NM_007220.3
RefSeq Size:	6032 bp
RefSeq ORF:	954 bp
Locus ID:	11238
UniProt ID:	Q9Y2D0
Cytogenetics:	Xp22.2
Domains:	carb_anhydrase
Protein Families:	Druggable Genome
Protein Pathways:	Nitrogen metabolism
MW:	36.43 kDa
Gene Summary:	Carbonic anhydrases (CAs) are a large family of zinc metalloenzymes that catalyze the reversible hydration of carbon dioxide. They participate in a variety of biological processes, including respiration, calcification, acid-base balance, bone resorption, and the formation of aqueous humor, cerebrospinal fluid, saliva, and gastric acid. They show extensive diversity in tissue distribution and in their subcellular localization. This gene encodes carbonic anhydrase 5B. CA5B, and the related CA5A gene, has its expression localized in the mitochondria though CA5B has a wider tissue distribution than CA5A, which is restricted to the liver, kidneys, and skeletal muscle. A carbonic anhydrase pseudogene (CA5BP1) is adjacent to the CA5B gene and these two loci produce CA5BP1-CA5B readthrough transcripts. [provided by RefSeq, Jan 2019]

Product images:



Circular map for RC207002L2