

## Product datasheet for RC206999L1

### TRAM2 (NM\_012288) Human Tagged Lenti ORF Clone

#### Product data:

**Product Type:** Expression Plasmids

**Tag:** Myc-DDK

**Symbol:** TRAM2

**Mammalian Cell** None

**Selection:**

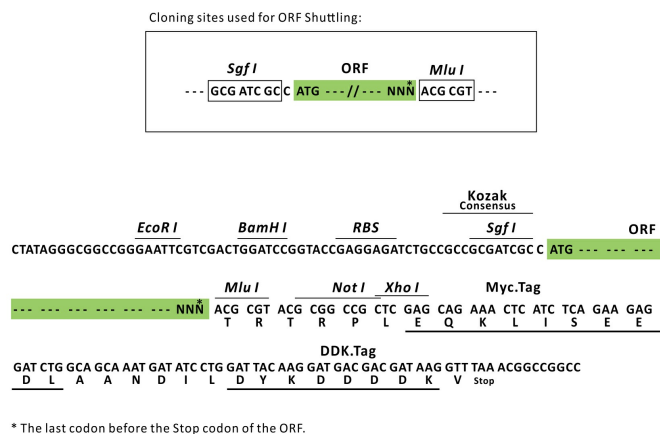
**Vector:** pLenti-C-Myc-DDK (PS100064)

**E. coli Selection:** Chloramphenicol (34 ug/mL)

**ORF Nucleotide Sequence:** The ORF insert of this clone is exactly the same as(RC206999).

**Restriction Sites:** SgfI-MluI

**Cloning Scheme:**



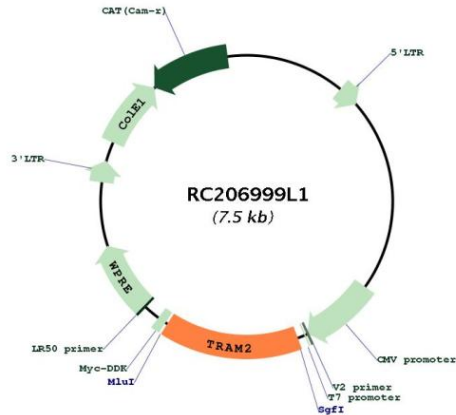
**ACCN:** NM\_012288

**ORF Size:** 1110 bp

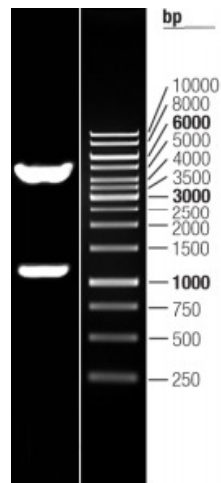


<b>OTI Disclaimer:</b>	The molecular sequence of this clone aligns with the gene accession number as a point of reference only. However, individual transcript sequences of the same gene can differ through naturally occurring variations (e.g. polymorphisms), each with its own valid existence. This clone is substantially in agreement with the reference, but a complete review of all prevailing variants is recommended prior to use. <a href="#">More info</a>
<b>OTI Annotation:</b>	This clone was engineered to express the complete ORF with an expression tag. Expression varies depending on the nature of the gene.
<b>Components:</b>	The ORF clone is ion-exchange column purified and shipped in a 2D barcoded Matrix tube containing 10ug of transfection-ready, dried plasmid DNA (reconstitute with 100 ul of water).
<b>Reconstitution Method:</b>	<ol style="list-style-type: none"> <li>1. Centrifuge at 5,000xg for 5min.</li> <li>2. Carefully open the tube and add 100ul of sterile water to dissolve the DNA.</li> <li>3. Close the tube and incubate for 10 minutes at room temperature.</li> <li>4. Briefly vortex the tube and then do a quick spin (less than 5000xg) to concentrate the liquid at the bottom.</li> <li>5. Store the suspended plasmid at -20°C. The DNA is stable for at least one year from date of shipping when stored at -20°C.</li> </ol>
<b>Note:</b>	Plasmids are not sterile. For experiments where strict sterility is required, filtration with 0.22um filter is required.
<b>RefSeq:</b>	<a href="#">NM_012288.3</a>
<b>RefSeq Size:</b>	7065 bp
<b>RefSeq ORF:</b>	1113 bp
<b>Locus ID:</b>	9697
<b>UniProt ID:</b>	<a href="#">Q15035</a>
<b>Cytogenetics:</b>	6p12.2
<b>Domains:</b>	LAG1, TLC
<b>Protein Families:</b>	Transmembrane
<b>MW:</b>	43.3 kDa
<b>Gene Summary:</b>	TRAM2 is a component of the translocon, a gated macromolecular channel that controls the posttranslational processing of nascent secretory and membrane proteins at the endoplasmic reticulum (ER) membrane.[supplied by OMIM, Jul 2004]

Product images:



Circular map for RC206999L1



Double digestion of RC206999L1 using SgfI and MluI