

Product datasheet for **RC206999**

TRAM2 (NM_012288) Human Tagged ORF Clone

Product data:

Product Type:	Expression Plasmids
Product Name:	TRAM2 (NM_012288) Human Tagged ORF Clone
Tag:	Myc-DDK
Symbol:	TRAM2
Mammalian Cell Selection:	Neomycin
Vector:	pCMV6-Entry (PS100001)
E. coli Selection:	Kanamycin (25 ug/mL)
ORF Nucleotide Sequence:	>RC206999 ORF sequence Red=Cloning site Blue=ORF Green=Tags(s)

TTTTGTAATACGACTCACTATAGGGCGGCCGGAATTCGTCGACTGGATCCGGTACCGAGGAGATCTGCC
GCC**CGATCGCC**

ATGGCTTCCGCAGGAGGACGAAAAGTTACCCGCTCTTCAGCCAGGAGTTCGTCATCCACAACCATGCGG
ACATCGGCTTCTGCCTGGTGTCTGCGTCTCATCGGGCTTATGTTTCGAGGTCACAGCCAAGACTGCCTT
TCTATTTATTTTACCTCAGTATAACATTAGCGTGCCTACAGCAGACAGTGAGACCGTGCCTACCCTAT
GGCCCTAAGGACCTGGTCAAACTTTGTTCTACATCTTCATCACCATCATCTTGCATGCTGTGGTTCAGG
AGTACATTTTAGATAAAATCAGCAAACGGCTTCATCTCCTCAAAGTCAAACACAGCAAGTTCATGAATGAAT
TGGACAGCTGGTGTCTTTCATTTACCTCGGTGATTTGGTGTCTACGTGGTGGTACGGAAGGATAC
TTAACAAACCAAGAAGCCTCTGGGAAGACTACCCGCATGTGCACCTCCCTTCCAGGTGAAGTTTTTCT
ACCTATGCCAGCTGGCCTACTGGCTGCACGCACTTCTGAGCTATACTCCAGAAGGTACGGAAGGAGGA
AATCCCCGCCAGCTCCAGTATATTTGCCTGTACCTGGTGCATATAGCTGGAGCATACCTCTTAAACCTG
AGCCGCTGGCCTGATCTTGTGCTGCTGCAGTACTCAACTGAGTTCCTCTCCACACGGCTAGACTCT
TCTACTTGCAGATGAAAACAACGAAAAGTTCAGTGCCTGGGCTGCTGTTTTGGGGTTACCCGCT
CTTCATCCTCACCTTGGCGTGTGGCCATTGGCTTTGGACTGGCTCGCATGGAAAACAGGCATTTGAT
CCCAGAAAAGGAACTTCAACACTTTGTTTTGCAGGCTCTGCGTGTGCTGCTGGTGTGTGCCGCCAGG
CCTGGCTCATGTGGCGTTCATCCACTCCAGCTGCGGCACTGGCGGGAATACTGGAATGAGCAGAGTGC
AAAGCGGAGAGTCCCAGCCACACCAGACTACCAGCCAGGCTCATCAAGAGGGAATCTGGTTACCATGAA
AATGGAGTGGTGAAGGCAGAGAACCGAACCTCCCCACGGACTAAGAAACTCAAGTCTCCC

ACGCGTACGCGGCCGCTCGAGCAGAACTCATCTCAGAAGAGGATCTGGCAGCAAATGATATCCTGGATT
ACAAGGATGACGACGATAAGGTTTAA



[View online »](#)

Protein Sequence: >RC206999 protein sequence
Red=Cloning site Green=Tags(s)

MAFRRRTKSYPLFSQEFVIHNDIGFCLVLCVLIIGLMFEVTAKTAFILPQYNISVPTADSETVHYHY
 GPKDLVTILFYIFITIIILHAVVQEYILDKISKRLHLSKVKHSKFNESGQLVVFHF TSVIWC FYVVVTEGY
 LTNPRSLWEDYPHVHLPFQVKFFYLCLAYWLHALPEL YFQKVRKEEIPRQLQYICLYLVHIAGAYLLNL
 SRLGLILLLLQYSTEFLFHTARLFYFADENNEKLFSAWA AVFGVTRLFIL TLAVLAI GFGLARMENQAFD
 PEKGNFNTLFCRLCVLLLVCAAQAWLMWRFIHSQLRHWREYWNEQSAKRRVPATPRLPARLIKRESGYHE
 NGVYKAENGTSPRTKCLKSP

TRTRPLEQKLISEEDLAANDILDYKDDDDKV

Chromatograms: https://cdn.origene.com/chromatograms/mk6518_c02.zip

Restriction Sites: SgfI-MluI

Cloning Scheme:

Cloning sites used for ORF Shuttling:



* The last codon before the Stop codon of the ORF

ACCN: NM_012288

ORF Size: 1110 bp

OTI Disclaimer: The molecular sequence of this clone aligns with the gene accession number as a point of reference only. However, individual transcript sequences of the same gene can differ through naturally occurring variations (e.g. polymorphisms), each with its own valid existence. This clone is substantially in agreement with the reference, but a complete review of all prevailing variants is recommended prior to use. [More info](#)

OTI Annotation: This clone was engineered to express the complete ORF with an expression tag. Expression varies depending on the nature of the gene.

Components: The ORF clone is ion-exchange column purified and shipped in a 2D barcoded Matrix tube containing 10ug of transfection-ready, dried plasmid DNA (reconstitute with 100 ul of water).

Reconstitution Method:

1. Centrifuge at 5,000xg for 5min.
2. Carefully open the tube and add 100ul of sterile water to dissolve the DNA.
3. Close the tube and incubate for 10 minutes at room temperature.
4. Briefly vortex the tube and then do a quick spin (less than 5000xg) to concentrate the liquid at the bottom.
5. Store the suspended plasmid at -20°C. The DNA is stable for at least one year from date of shipping when stored at -20°C.

RefSeq: [NM_012288.4](#)

RefSeq Size: 7065 bp

RefSeq ORF: 1113 bp

Locus ID: 9697

UniProt ID: [Q15035](#)

Cytogenetics: 6p12.2

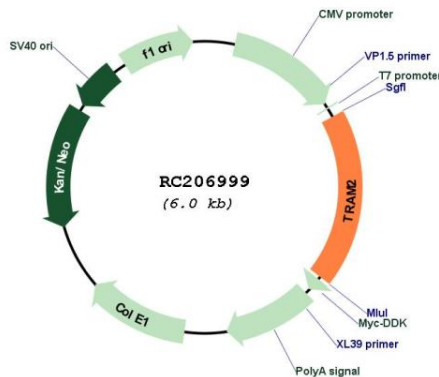
Domains: LAG1, TLC

Protein Families: Transmembrane

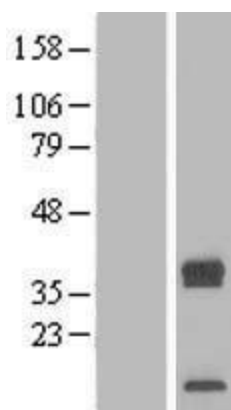
MW: 43.3 kDa

Gene Summary: TRAM2 is a component of the translocon, a gated macromolecular channel that controls the posttranslational processing of nascent secretory and membrane proteins at the endoplasmic reticulum (ER) membrane.[supplied by OMIM, Jul 2004]

Product images:



Circular map for RC206999



Western blot validation of overexpression lysate (Cat# [LY415841]) using anti-DDK antibody (Cat# [TA50011-100]). Left: Cell lysates from untransfected HEK293T cells; Right: Cell lysates from HEK293T cells transfected with RC206999 using transfection reagent MegaTran 2.0 (Cat# [TT210002]).