

Product datasheet for **RC206992**

TMEM63A (NM_014698) Human Tagged ORF Clone

Product data:

Product Type:	Expression Plasmids
Product Name:	TMEM63A (NM_014698) Human Tagged ORF Clone
Tag:	Myc-DDK
Symbol:	TMEM63A
Synonyms:	HLD19; KIAA0792
Mammalian Cell Selection:	Neomycin
Vector:	pCMV6-Entry (PS100001)
E. coli Selection:	Kanamycin (25 ug/mL)



[View online »](#)

ORF Nucleotide Sequence:

>RC206992 ORF sequence
 Red=Cloning site Blue=ORF Green=Tags(s)

TTTTGTAATACGACTCACTATAGGGCGGCCGGGAATTCGTCGACTGGATCCGGTACCGAGGAGATCTGCC
 GCC**CGGATCGCC**

ATGATGGACTCCCCGTTCTGGAGCTGTGGCAGTCCAAGGCAGTGTCCATCAGGGAGCAGCTGGGACTCG
 GGGACCGGCCAACGACTCCTATTGCTACAACCTCGGCCAAAAACAGCACCGTGTCCAGGGGTCACCTT
 TGGTGGCATCCCCACTGTCTGCTCATAGACGTGAGCTGCTTCTGTTCTTAATCTTGGTGTCTTATT
 ATAAGAAGAAGATTCTGGGACTATGGCCGATTGCCCTGGTGTGAGAAGCAGACAGCGAGTCCAGATTTT
 AGAGATTGTATCGACTTCTCTCAGGTCAACAAGACTTTGAAAATGAGCTGGGATGCTGTCCCTGGCT
 GACTGCCATCTTCGCTGCATGATGACCAGATCTGGAATGGTGTGGGAGGACGCCATCCACTACCTG
 TCCTCCAGAGGCACATCATCTTCTGTTGGTGGTGGTCACTTTTTGTCCCTGTGTGCATCCTGCCTG
 TCAACCTCTCAGGGGACTTGTGGACAAAGACCCGTATAGTTTTGGGAGGACAACAATAGCAAACCTACA
 GACTGACAATGACCTCCTTTGGCTGCACACCATCTTTGCTGTCACTTACCTCTTCTCAGTGGGTTTC
 ATGCGGCCACCACACTCAGTCCATTAAGTACAAAGAGGAGAACCTGGTGGGCGGACCCCTGTTTCATCACAG
 GACTCCCCAGAGATGCCAGGAAGGAGACTGTGGAGAGCCACTTCCGGGACGCGTATCCCACGTGTGAGGT
 GGTGTGATGTGAGCTGTGCTACAACGTGGCCAACTGATCTACCTGTGCAAGGAGAAAAAGAAGACTGAG
 AAGAGCCTGACCTATTACACAAACCTGCAGGTGAAGACAGGCCAGCGGACCCCTCAACCCCAAGCCCT
 GTGGCCAGTTTTGCTGCTGTGAAGTGTGGGCTGTGAGTGGGAAGACGCCATCTTACTACACAGGAT
 GAAGGACAGGCTGCTGGAGAGGATCACAGAGGAAGAAGCCACGTCCAGGACAGCCCTGGGAATGGCC
 TTCGTACCTTCCAGGAGAAGTCCATGGCCACCTACATCTGAAAGATTTCAATGCCTCAAGTGGCAGT
 CACCTTTGCTGCTGACCCTGAGGACATCTGCTGGAAGAACCTCTCTATCCAGGGCCTCCGCTGGTGGCTA
 CAGTGGCTGGGCATCAACTTACCCCTTCTCCTGGGCTATTTTTCTGACCACACCCTCCATCATCTGT
 CCACCATGGACAAGTTTAAATGTCACCAAACCCATCCATGCGCTGAATAACCCGATCATCAGCCAGTTCTT
 CCCCACCTCCTGCTCTGGTCTTCTCGGCCCTGCTCCCCTCCATTGTCTACTACTCTACACTGCTGGAG
 TCTCACTGGACCAAGTCGGGGGAAAACCAGATCATGATGACCAAAGTCTACATATTCTTGATCTTCATGG
 TGCTGATCCTGCCCTCCCTGGTCTCACCAGTCTAGATTTTTTCTTCCGGTGGCTCTTTGACAAAACCTC
 CTCGGAGGCTCCATCAGGTTGGAGTGCCTTCTCCTGCCTGACCAGGTCCTTCTTGTGAACTATGTC
 ATCGCCTCGGCCTTCATCGGCAATGGCATGGAGCTGCTGCGGCTGCCAGGTCTCATCCTCTATACCTTCC
 GCATGATCATGGCCAAGACGGCTGCTGACCGCAGGAATGTCAAGCAGAACCAGGCCTCCAGTACGAGTT
 TGGAGCCATGTATGCATGGATGTGTGTCTTCACTGTGCATCGTGGCCTACAGCATCACTTGTCCCATC
 ATCGCGCCATTTGGCCTCATCTACATCCTGCTCAAGCACATGGTGGACCGGCACAACCTCTACTTCGTCT
 ACCTCCCAGCCAAGCTGGAGAAGGGATCCACTTTGCCGCTGTGAACCAGGCCTTGGCAGCCCCATCCT
 GTGCCTCTTCTGGCTCTACTTCTTTTCTTCTGCGCCTGGGTATGAAGGCCCCCGCCACTCTGTTCAAC
 TTCCTGGTGTGCTGCTCACCATCCTGGTCTGCCTGGCTCACACCTGCTTTGGATGCTTCAAGCACCTCA
 GCCCTCTGAACACAAAACAGAAGAGCCTGCAAGTGACAAAGGAAGTGAAGCAGAGGCCACATGCCCC
 ACCGTTACACCCTACGTGCCTCGGATTCTGAACGGCTTGGCCTCGGAGAGGACAGCACTGTCTCCGCG
 CAGCAGCAGCAGCAGACCTATGGTGCCATCCACAACATCAGCGGACTATCCCTGGACAGTCTTGGCGC
 AGAGCGCCACGGCAGTGTGGCTGCTGCCCCCAGGAGGCC

AG**CGGACCG**ACGCGTACGCGGCCGCTCGAGCAGAACTCATCTCAGAAGAGGATCTGGCAGCAAATGATATCC
 TGGATTACAAGGATGACGACGATAAGGTTTAA

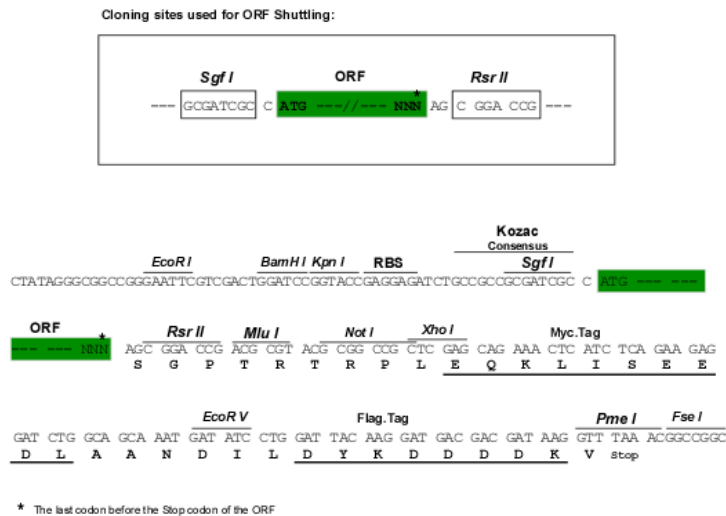
Protein Sequence: >RC206992 protein sequence
Red=Cloning site Green=Tags(s)

MMDSPFLELWQSKAVSIREQLGLGDRPNDSYCYNSAKNSTVLQGVTFGGIPTVLLIDVSCFLFLILVFSI
IRRRFWDYGRIALVSEADSESRFQRLSSTSSSGQDFENELGCCPWLTAIFRLHDDQILEWCGEDAIHYL
SFQRHIIIFLLVVVSFLSLCVILPVNLSGDLLDKDPYSFGRTTIANLQTDNDLLWLHTIFAVIYFLFTVGF
MRHHTQSIKYKEENLVRRTLFITGLPRDARKETVESHRDAYPTCEVVDVQLCYNVAKLIYLCKEKKKTE
KSLTYYTNLQVKTGQRTLINPKPCGQFCCCEVLGCEWEDAISSYYTRMKDRLLERITEEERHVQDQPLGMA
FVTFQEKS MATYILKDFNACKCQSLQCKGEPQPSHSRELYTSKWTVTFAADPEDICWKNLSIQGLRWWL
QWLGINF TLFGLFFLTTPSII LSTMDKFNVTKPIHALNNPIISQFFPTLLLWFSALLPSIVYYSTLLE
SHWTKSGENQIMMTKVYIFLIFMVLILPSLGLTSLDFFFRWLFDKTSSEASIRLECVFLPDQGAFVNYV
IASAFIGNGMELLRLPGLILYTFRMIMAKTAADRRNVKQNAFQYEFGAMYAWMLCVFTVIVAYSITCPI
IAPFGLIYILLKHMVDRHNLYFVYLPKLEKGIHFAAVNQALAAPILCLFWLYFFSFLRLGMKAPATLFT
FLVLLLILVCLAHTCFGCFKHLSPLNYKTEEPASDKGSEAEAHMPPPTPYVPRILNGLASERTALSPQ
QQQQQTYGAIHNISGTIPGQCLAQSATGSVAAAPQEA

SGP TRTRPLEQKLI SEEDLAANDILDYKDDDDKV

Chromatograms: https://cdn.origene.com/chromatograms/mk6623_h07.zip

Restriction Sites: SgfI-RsrII

Cloning Scheme:


ACCN: NM_014698

ORF Size: 2421 bp

OTI Disclaimer: The molecular sequence of this clone aligns with the gene accession number as a point of reference only. However, individual transcript sequences of the same gene can differ through naturally occurring variations (e.g. polymorphisms), each with its own valid existence. This clone is substantially in agreement with the reference, but a complete review of all prevailing variants is recommended prior to use. [More info](#)

OTI Annotation: This clone was engineered to express the complete ORF with an expression tag. Expression varies depending on the nature of the gene.

Components: The ORF clone is ion-exchange column purified and shipped in a 2D barcoded Matrix tube containing 10ug of transfection-ready, dried plasmid DNA (reconstitute with 100 ul of water).

Reconstitution Method:

1. Centrifuge at 5,000xg for 5min.
2. Carefully open the tube and add 100ul of sterile water to dissolve the DNA.
3. Close the tube and incubate for 10 minutes at room temperature.
4. Briefly vortex the tube and then do a quick spin (less than 5000xg) to concentrate the liquid at the bottom.
5. Store the suspended plasmid at -20°C. The DNA is stable for at least one year from date of shipping when stored at -20°C.

Note: Plasmids are not sterile. For experiments where strict sterility is required, filtration with 0.22um filter is required.

RefSeq: [NM_014698.3](#)

RefSeq Size: 4469 bp

RefSeq ORF: 2424 bp

Locus ID: 9725

UniProt ID: [O94886](#)

Cytogenetics: 1q42.12

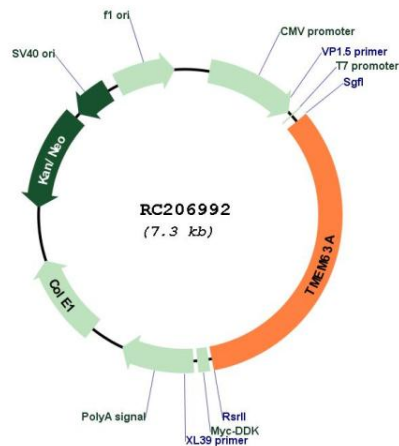
Domains: DUF221

Protein Families: Transmembrane

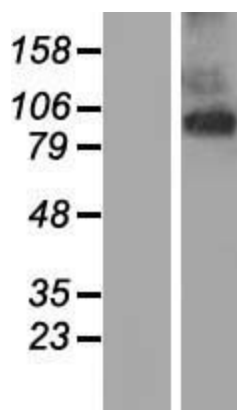
MW: 92.1 kDa

Gene Summary: Acts as an osmosensitive calcium-permeable cation channel.[UniProtKB/Swiss-Prot Function]

Product images:



Circular map for RC206992



Western blot validation of overexpression lysate (Cat# [LY415076]) using anti-DDK antibody (Cat# [TA50011-100]). Left: Cell lysates from untransfected HEK293T cells; Right: Cell lysates from HEK293T cells transfected with RC206992 using transfection reagent MegaTran 2.0 (Cat# [TT210002]).