

Product datasheet for **RC206989**

MTLRP (GHRL) (NM_016362) Human Tagged ORF Clone

Product data:

Product Type: Expression Plasmids
Product Name: MTLRP (GHRL) (NM_016362) Human Tagged ORF Clone
Tag: Myc-DDK
Symbol: MTLRP
Synonyms: MTLRP
Mammalian Cell Selection: Neomycin
Vector: pCMV6-Entry (PS100001)
E. coli Selection: Kanamycin (25 ug/mL)
ORF Nucleotide Sequence: >RC206989 ORF sequence
 Red=Cloning site Blue=ORF Green=Tags(s)

TTTTGTAATACGACTCACTATAGGGCGCCGGAATTCGTCGACTGGATCCGGTACCGAGGAGATCTGCC
 GCC**CGGATCGCC**

ATGCCCTCCCCAGGGACCGTCTGCAGCCTCCTGCTCCTCGGCATGCTCTGGCTGGACTTGGCCATGGCAG
 GCTCCAGCTTCTGAGCCCTGAACACCAGAGAGTCCAGCAGAGAAAGGAGTCGAAGAAGCCACCAGCCAA
 GCTGCAGCCCCGAGCTCTAGCAGGCTGGCTCCGCCGGAAGATGGAGGTCAAGCAGAAGGGGCAGAGGAT
 GAAATGGAAGTCCGGTTCAACGCCCTTTGATGTTGGAATCAAGCTGTCAGGGGTTCACTACCAGCAGC
 ACAGCCAGGCCCTGGGAAGTTTCTTCAGGACATCCTCTGGGAAGAGGCCAAAGAGGCCCCAGCCGACAA
 G

ACGCGTACGCGGCCGCTCGAGCAGAAACTCATCTCAGAAGAGGATCTGGCAGCAAATGATATCCTGGATT
 ACAAGGATGACGACGATAAGGTTTAA

Protein Sequence: >RC206989 protein sequence
 Red=Cloning site Green=Tags(s)
 MSPSGTVCSLLLLGMLWLDLAMAGSSFLSPEHQRVQQRKESKPPAKLQPRALAGWLRPEDGGQAEAGED
 EMEVRFNAPFDVGIKLSGVYQQHSQALGKFLQDILWEEAKEAPADK

TRTRPLEQKLISEEDLAANDILDYKDDDDKV

Chromatograms: https://cdn.origene.com/chromatograms/mk6018_h01.zip

Restriction Sites: Sgfl-Mlul

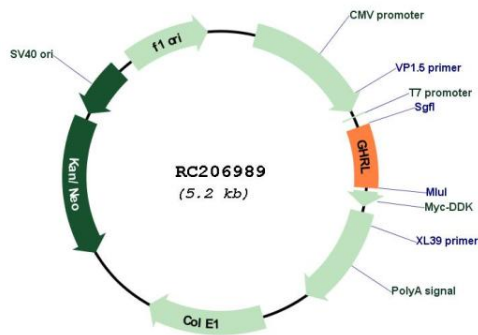


[View online »](#)

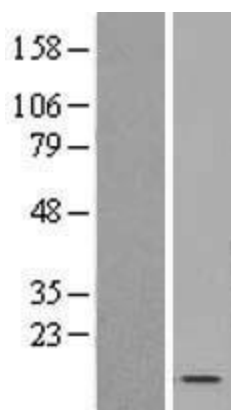
Cytogenetics: 3p25.3
Protein Families: Druggable Genome, Secreted Protein, Transmembrane
MW: 12.9 kDa

Gene Summary: This gene encodes the ghrelin-obestatin preproprotein that is cleaved to yield two peptides, ghrelin and obestatin. Ghrelin is a powerful appetite stimulant and plays an important role in energy homeostasis. Its secretion is initiated when the stomach is empty, whereupon it binds to the growth hormone secretagogue receptor in the hypothalamus which results in the secretion of growth hormone (somatotropin). Ghrelin is thought to regulate multiple activities, including hunger, reward perception via the mesolimbic pathway, gastric acid secretion, gastrointestinal motility, and pancreatic glucose-stimulated insulin secretion. It was initially proposed that obestatin plays an opposing role to ghrelin by promoting satiety and thus decreasing food intake, but this action is still debated. Recent reports suggest multiple metabolic roles for obestatin, including regulating adipocyte function and glucose metabolism. Alternative splicing results in multiple transcript variants. In addition, antisense transcripts for this gene have been identified and may potentially regulate ghrelin-obestatin preproprotein expression. [provided by RefSeq, Nov 2014]

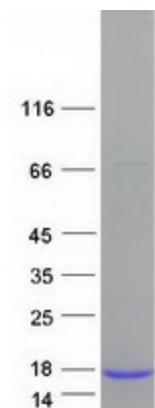
Product images:



Circular map for RC206989



Western blot validation of overexpression lysate (Cat# [LY402547]) using anti-DDK antibody (Cat# [TA50011-100]). Left: Cell lysates from untransfected HEK293T cells; Right: Cell lysates from HEK293T cells transfected with RC206989 using transfection reagent MegaTran 2.0 (Cat# [TT210002]).



Coomassie blue staining of purified GHRL protein (Cat# [TP306989]). The protein was produced from HEK293T cells transfected with GHRL cDNA clone (Cat# RC206989) using MegaTran 2.0 (Cat# [TT210002]).