

## Product datasheet for **RC206986**

### **C2orf18 (SLC35F6) (NM\_017877) Human Tagged ORF Clone**

#### Product data:

Product Type:	Expression Plasmids
Product Name:	C2orf18 (SLC35F6) (NM_017877) Human Tagged ORF Clone
Tag:	Myc-DDK
Symbol:	C2orf18
Synonyms:	ANT2BP; C2orf18; TANGO9
Mammalian Cell Selection:	Neomycin
Vector:	pCMV6-Entry (PS100001)
E. coli Selection:	Kanamycin (25 ug/mL)
ORF Nucleotide Sequence:	>RC206986 ORF sequence Red=Cloning site Blue=ORF Green=Tags(s)

TTTTGTAATACGACTCACTATAGGGCGGCCGGAATTCGTCGACTGGATCCGGTACCGAGGAGATCTGCC  
GCC**CGATCGCC**

ATGGCCTGGACCAAGTACCAGCTGTTCTGGCCGGGCTCATGCTTGTACCGGCTCCATCAACACGCTCT  
CGGCAAAATGGGCGGACAATTTTCATGGCCGAGGGCTGTGGAGGGAGCAAGGAGCAGACTCCAGCATCC  
CTTCTCCAGGCAGTGGGCATGTTCTGGGAGAATTCCTCGCTGGCTGCCTTCTACCTCCTCCGATGC  
AGAGCTGCAGGGCAATCAGACTCCAGCGTAGACCCCGCAGAGCCCTTCAACCCTCTCTTTCTGCCCC  
CAGCGCTCTGTGACATGACAGGGACCAGCCTCATGTATGTGGCTCTGAACATGACCAGTGCCTCCAGCTT  
CCAGATGCTGCGGGTGCAGTGATCATATTCAGTGGCCTGTTCTCGGTGGCCTTCCCTGGGCCGAGGCTG  
GTGCTGAGCCAGTGGCTGGGCATCCTAGCCACCATCGCGGGGCTGGTGGTTCGTGGCCTGGCTGACCTCC  
TGAGCAAGCAGCAGACTCAGCACAAGCTCAGCGAAGTGATCACAGGGGACCTGTTGATCATCATGGCCCA  
GATCATCGTTGCCATCCAGATGGTGCTAGAGGAGAAGTTCGTCTACAAACACAATGTGCACCCACTGCGG  
GCAGTTGGCACTGAGGGCCTCTTTGGCTTTGTGATCCTCTCCCTGCTGCTGGTGGCCATGTACTACATCC  
CCGCCGGCTCCTCAGCGGAAACCCTCGTGGGACACTGGAGGATGCATTGGACGCCTTCTGCCAGGTGGG  
CCAGCAGCCGCTCATTGCCGTGGCACTGCTGGGCAACATCAGCAGCATTGCCTTCTCAACTTCGCAGGC  
ATCAGCGTCACCAAGGAAGTGGGCAACACCCCGCATGGTGTGGACAGCTTGGCAGCCGTTGTACTCAT  
GGGCACTGAGCCTGGCACTGGGCTGGGAGGCCTTCCATGCACTGCAGATCCTTGGCTTCTCATACTCCT  
TATAGGCACTGCCCTCTACAATGGGCTACACCGTCCGCTGCTGGGCCGCTGTCCAGGGCCGGCCCTG  
GCAGAGGAGAGCGAGCAGGAGAGACTGCTGGTGGCACCCGCACTCCCATCAATGATGCCAGC

**ACGCGT**ACGCGGCCGCTCGAGCAGAAACTCATCTCAGAAGAGGATCTGGCAGCAAATGATATCCTGGATT  
ACAAGGATGACGACGATAAGGTTTAA



[View online »](#)

**Protein Sequence:** >RC206986 protein sequence  
Red=Cloning site Green=Tags(s)

MAWTKYQLFLAGLMLVTGSINTLSAKWADNFMAEGCGGSKEHSFQHPFLQAVGMFLGEFSCLAAYLLRC  
 RAAGQSDSSVDPQQPFNPPLFLPPALCDMTGTSLSMYVALNMTSASSFQMLRGAVIIFTGLFSVAFLLGRRL  
 VLSQWLGIATIAGLVVGLADLLSKHDSQHKLSEVITGDLLIIMAQIIIVAIQMVLKEEFVYKHNHPLR  
 AVGTEGLFGFVILSLLLVPYYIPAGSFSGNPRGTLEDALDAFCQVQQPLIAVALLGNISSIAFFNFAG  
 ISVTKELSATTRMVLDSLRTVVIWALSLALGWAEFHALQILGFLILLIGTALYNLHRPLLGRLSRGRPL  
 AESEQERLLGGTRTPINDAS

TRTRPLEQKLISEEDLAANDILDYKDDDDKV

**Chromatograms:** [https://cdn.origene.com/chromatograms/mk6331\\_a02.zip](https://cdn.origene.com/chromatograms/mk6331_a02.zip)

**Restriction Sites:** SgfI-MluI

**Cloning Scheme:**



\* The last codon before the Stop codon of the ORF

**ACCN:** NM\_017877

**ORF Size:** 1113 bp

**OTI Disclaimer:** The molecular sequence of this clone aligns with the gene accession number as a point of reference only. However, individual transcript sequences of the same gene can differ through naturally occurring variations (e.g. polymorphisms), each with its own valid existence. This clone is substantially in agreement with the reference, but a complete review of all prevailing variants is recommended prior to use. [More info](#)

**OTI Annotation:** This clone was engineered to express the complete ORF with an expression tag. Expression varies depending on the nature of the gene.

**Components:** The ORF clone is ion-exchange column purified and shipped in a 2D barcoded Matrix tube containing 10ug of transfection-ready, dried plasmid DNA (reconstitute with 100 ul of water).

**Reconstitution Method:**

1. Centrifuge at 5,000xg for 5min.
2. Carefully open the tube and add 100ul of sterile water to dissolve the DNA.
3. Close the tube and incubate for 10 minutes at room temperature.
4. Briefly vortex the tube and then do a quick spin (less than 5000xg) to concentrate the liquid at the bottom.
5. Store the suspended plasmid at -20°C. The DNA is stable for at least one year from date of shipping when stored at -20°C.

**RefSeq:** [NM\\_017877.4](#)

**RefSeq Size:** 3912 bp

**RefSeq ORF:** 1116 bp

**Locus ID:** 54978

**UniProt ID:** [Q8N357](#)

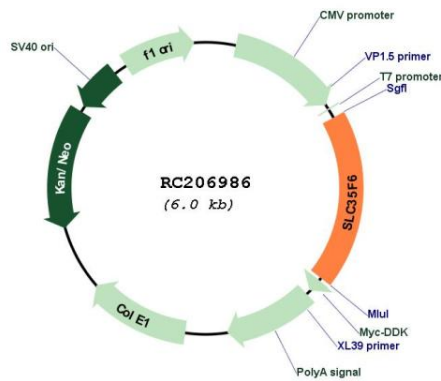
**Cytogenetics:** 2p23.3

**Protein Families:** Transmembrane

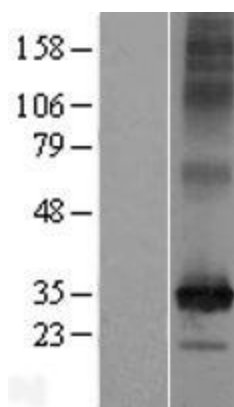
**MW:** 40.2 kDa

**Gene Summary:** Involved in the maintenance of mitochondrial membrane potential in pancreatic ductal adenocarcinoma (PDAC) cells. Promotes pancreatic ductal adenocarcinoma (PDAC) cell growth. May play a role as a nucleotide-sugar transporter.[UniProtKB/Swiss-Prot Function]

**Product images:**



Circular map for RC206986



Western blot validation of overexpression lysate (Cat# [LY413498]) using anti-DDK antibody (Cat# [TA50011-100]). Left: Cell lysates from untransfected HEK293T cells; Right: Cell lysates from HEK293T cells transfected with RC206986 using transfection reagent MegaTran 2.0 (Cat# [TT210002]).