

Product datasheet for **RC206977**

C11orf80 (NM_024650) Human Tagged ORF Clone

Product data:

Product Type:	Expression Plasmids
Product Name:	C11orf80 (NM_024650) Human Tagged ORF Clone
Tag:	Myc-DDK
Symbol:	C11orf80
Synonyms:	HYDM4; TOP6BL; TOPOVIBL
Mammalian Cell Selection:	Neomycin
Vector:	pCMV6-Entry (PS100001)
E. coli Selection:	Kanamycin (25 ug/mL)



[View online »](#)

ORF Nucleotide Sequence:

>RC206977 ORF sequence
 Red=Cloning site Blue=ORF Green=Tags(s)

TTTTGTAATACGACTCACTATAGGGCGGCCGGAATTCGTCGACTGGATCCGGTACCGAGGAGATCTGCC
 GCC**CGCATCGCC**

ATGGTTGCTTCTGCAGGAAGCCTTTTTGGTGGCATGGTCTCAAGAAGTTCCTAAAAGAAATACAGTCCA
 TACTGCCCGGAATCTCTGCAAAGCTGACTTGGACTTCAGAGGAAGGCAGCTATTCTCAGGATATGACAGG
 GGTAACACCCCTTCCAGATGATTTTTGAGGTTGATGAAAAGCCAGAACCTTGATGACAGATTGTCTGGTT
 ATAAAGCATTTTTACGTAATAATCATCATGGTGCACCCTAAGGTCAGATTTCAATTCAGTGTAAAGGTAA
 ATGGAATCCTCTCCACAGAGATCTTTGGGGTGGAGAATGAACCCACTTTGAACCTTGGGAATGGAATTGC
 TCTTTTGGTTCGACTCCAGCATTATGTGAGACCAATTTTGGTACAATTGAATCACACTGCAGCAGAATT
 CACCCTGTGCTAGGACATCCAGTAATGCTTTTCATCCCTGAAGACGTGGTGGCATGGACTTGTGGGAG
 AACTGATACTGACTCCAGCAGCTGCACTGTGCCAGCCCAAAGGTTTCTTCCAACCAGCTAACAGGAT
 TTCTTCAGTTTCCATATTTCTATATGGACCTTTGGGTCTGCCTCTGATATTGTCAACTTGGGAGCAGCCG
 ATGACTACTTTCTCAAAGATACCTCTTCTTAGTTGACTGGAAAAAATACCATTGTGTATGATACCCA
 ATTTGGATCTCAATTTGGATAGAGATTTGGTGCTTCCAGATGTGAGTTATCAGGTGGAATCCAGTGAGGA
 GGATCAGTCTCAGACTATGGATCCTCAAGGACAACTCTGCTGCTTTTTCTTTGTGGATTTCCACAGT
 GCATTTCCAGTCCAGCAAATGGAATCTGGGGAGTCTATACTTTGCTCACAACCTCATCTCAATGCCATCC
 TTGTGGAGAGCCACAGTGTAGTGAAGGTTCCATCCAATTCAGTGGACAAGGCTTTGGAGCAACATCA
 CCAGGCTGCCAAGGCTCAGCAGAACTACAGGCCTCACTCTCAGTGGCTGGAATCCATCATGAGTATT
 CTGACTGGAAGCACTAGGAGCAGCTTCCGAAAGATGTGTCTCCAGACCCTCAAGCAGCTGACACACAAG
 AGTTTCAGGACCAAACTGCACAAAGTATTTCTGTGAGATCACCAACCAATTTCTTACCCTGCTCATG
 TGAGGTGAAGCAGCAGCTAACCCCTAGAAAAAAGGACTCAGCCCAGGGCACTGAGGACGCACCTGATAAC
 AGCAGCCTGGAGCTCCTAGCAGATACCAGCGGGCAAGCAGAAAAAAGAGGCTCAAGAGGGGCGAGCCCC
 GCATAGAGGAGATGCGAGCTCTGCGCTCTGCCAGGGCCCCGAGCCGTCAGAGGGCCGCCCGCGCCGCC
 GGAAGCCACCGCGGCCCCCTCACTCTAGAGGAAGGGAGCACCGCAGGCTCACGGCAGGGCCCTGGCG
 CCGGGCAGGGCGAGCCTCGGAAGCCGCTGGAGGACGTGCTGTGGCTGCAGGAGGTCTCAAACCTGTCAG
 AGTGGCTGAGTCCAGCCCTGGGCC

ACGCGTACGCGGCCGCTCGAGCAGAACTCATCTCAGAAGAGGATCTGGCAGCAAATGATATCTGGATT
 ACAAGGATGACGACGATAAGGTTTAA

Protein Sequence:

>RC206977 protein sequence
 Red=Cloning site Green=Tags(s)

MVASAGSLFSGMVLKFLKEIQSILPGISAKLTWTSEEGSYSQDMTGVTPEFQMI FEVDEKPRTLMTDCLV
 IKHFLRKIIMVHPKVRHFHFSVKVNGILSTEIFGVENEPTLNLGNGIALLVDSQHYVRPNFGTIESHCSRI
 HPVLGHPVMLFIPEDVAGMDLLGELILTPAAALCPSPKVSSNQLNRISVSIFLYGPLGLPLILSTWEQP
 MTTFFKDTSSLVDWKYHLCMIPNLDLDRDLVLPDVS YQVESSEEDQSQTMDPQGQTL LLLFLVDFHS
 AFPVQQMEIWGVYTLTTHLNAILVESHSVVGSIQFTVDKVLQHHQAQAQKQLQASLSVAVNSIMSI
 LTGSTRSSFRKMCLQTLQAADTQEFRTKLHKVFREITQHQLHHCSEVKQQLTLEKKDSAQGTEDAPDN
 SSLELLADTSGQAENKRLKRGSPRIEEMRALRSARAPSPSEAAPRRPEATAAPLTPRGREHREAHGRALA
 PGRASLGSRLDVLWLQEVSNLSEWLSPPGP

TRTRPLEQKLISEEDLAANDILDYKDDDDKV

Chromatograms:

https://cdn.origene.com/chromatograms/mk6333_a05.zip

Restriction Sites:

Sgfl-MluI

Cloning Scheme:


ACCN: NM_024650

ORF Size: 1566 bp

OTI Disclaimer: The molecular sequence of this clone aligns with the gene accession number as a point of reference only. However, individual transcript sequences of the same gene can differ through naturally occurring variations (e.g. polymorphisms), each with its own valid existence. This clone is substantially in agreement with the reference, but a complete review of all prevailing variants is recommended prior to use. [More info](#)

OTI Annotation: This clone was engineered to express the complete ORF with an expression tag. Expression varies depending on the nature of the gene.

Components: The ORF clone is ion-exchange column purified and shipped in a 2D barcoded Matrix tube containing 10ug of transfection-ready, dried plasmid DNA (reconstitute with 100 ul of water).

Reconstitution Method:

1. Centrifuge at 5,000xg for 5min.
2. Carefully open the tube and add 100ul of sterile water to dissolve the DNA.
3. Close the tube and incubate for 10 minutes at room temperature.
4. Briefly vortex the tube and then do a quick spin (less than 5000xg) to concentrate the liquid at the bottom.
5. Store the suspended plasmid at -20°C. The DNA is stable for at least one year from date of shipping when stored at -20°C.

RefSeq: [NM_024650.2](#), [NP_078926.2](#)

RefSeq Size: 2323 bp

RefSeq ORF: 2034 bp

Locus ID: 79703

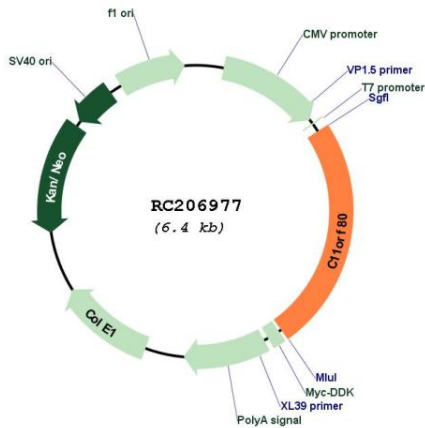
UniProt ID: [Q8N6T0](#)

Cytogenetics: 11q13.2

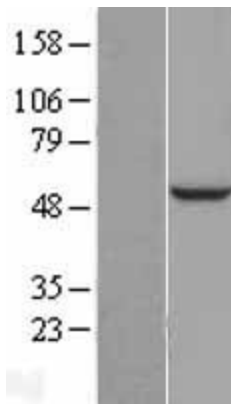
MW: 58.1 kDa

Gene Summary: Isoform 3: Component of a topoisomerase 6 complex specifically required for meiotic recombination. Together with SPO11, mediates DNA cleavage that forms the double-strand breaks (DSB) that initiate meiotic recombination. The complex promotes relaxation of negative and positive supercoiled DNA and DNA decatenation through cleavage and ligation cycles.[UniProtKB/Swiss-Prot Function]

Product images:



Circular map for RC206977



Western blot validation of overexpression lysate (Cat# [LY411168]) using anti-DDK antibody (Cat# [TA50011-100]). Left: Cell lysates from untransfected HEK293T cells; Right: Cell lysates from HEK293T cells transfected with RC206977 using transfection reagent MegaTran 2.0 (Cat# [TT210002]).