

Product datasheet for **RC206973**

CSTF2T (NM_015235) Human Tagged ORF Clone

Product data:

Product Type:	Expression Plasmids
Product Name:	CSTF2T (NM_015235) Human Tagged ORF Clone
Tag:	Myc-DDK
Symbol:	CSTF2T
Synonyms:	CstF-64T
Mammalian Cell Selection:	Neomycin
Vector:	pCMV6-Entry (PS100001)
E. coli Selection:	Kanamycin (25 ug/mL)



[View online »](#)

ORF Nucleotide Sequence:

>RC206973 ORF sequence
 Red=Cloning site Blue=ORF Green=Tags(s)

TTTTGTAATACGACTCACTATAGGGCGGCCGGAATTCGTCGACTGGATCCGGTACCGAGGAGATCTGCC
 GCC**CGCATCGCC**

ATGTCGAGTTTGGCGGTGAGAGACCCGGCAATGGATCGATCACTGCGTTCCGTGTTTCGTGGGAACATTC
 CATATGAGGCAACTGAGGAGCAGTTAAAGGACATTTCTCGGAGGTTGGTTCTGTTGTCAGTTTCCGGCT
 GGTATACGATAGAGAGACGGGAAAACCAAGGGCTATGGCTTCTGCGAATACCAAGACCAGGAGACCGCG
 CTTAGTGCATGCGGAACCTCAATGGGCGGGAGTTCAGTGGGAGAGCGCTTCGGGTGGACAATGCTGCCA
 GTGAAAAGAATAAGGAGGAGTTAAAGAGCCTCGGGCTGCAGCGCCATTATTGACTCACCTATGGGGA
 TCCCATCGATCCAGAAGATGCCCTGAATCGATTACCAGAGCAGTAGCCAGTCTCCCCCGGAGCAGATG
 TTTGAGCTGATGAAGCAGATGAAGCTCTGTGTCCAAAACAGCCACCAGGAAGCTCGAAACATGTTACTTC
 AAAATCCACAACGGCTTATGCACTGTTGCAGGCACAAGTAGTGATGAGAATCATGGATCCAGAGATTGC
 TCTGAAAATTCTGCATCGGAAGATACATGTCACACCACTGATCCCAGGCAATCTCAGTCTGTGTCTGTC
 TCTGGCCCTGGCCCTGGCCCTGGCCCTGGCTCTGCCAGGACCTAATGTTCTGCTGAACCAGCAGAATC
 CTCAGCTCCTCAGCCTCAGCATTTGGCTAGAAGACCTGTGAAGGACATTCCTCCTCTGATGCAGACTCC
 TATCCAGGGTGGAAATCCAGCTCCAGGGCAATACCAGCTGCAGTTCCCGGAGCTGGTCTGTTCCTTA
 ACTCCTGGAGGAGCAATGCAGCCCAACTTGGAAATGCCAGGGGTTGGCCAGTGCCTTTAGAGCGGGGAC
 AAGTGCAGATGTCAGATCCTAGAGCTCCTATACCTCGCGGACCCGTGACTCCTGGTGGTCTGCCTCCTCG
 AGGACTGTTAGGAGATGCTCAAATGACCCACGTGGAGGGACTTTGCTTTCAGTCACTGGAGAAGTGGAG
 CCCAGAGGTTATCTGGTCCACCCATCAGGGTCCCCCATGCATCATGCCTCTGGTTCATGACACTCGTG
 GCCCTTCTCACATGAGATGAGGGGAGGGCCATTAGGAGATCCCAGACTGCTAATTGGAGAGCCAGAGG
 CCCCATGATAGATCAAAGGGGTCTACCTATGGATGGTAGAGGTGGTAGAGATTCTCGAGCGATGGAGACT
 CGCGCCATGGAAGTCTAGAGACCGTGAATGGAGAGGAGAGGAATGGAGACCTGTGCGATGG
 AAACCAGAGGGATGGAAGCAAGGGGCATGGATGCAAGAGGATTGGAGATGAGGGGCCCTGTCCCCAGTTC
 AAGAGGCCCTATGACTGGTGGAAATTCAGGGTCTGGTCCCATTAATATAGGGGCAGGTGGCCCTCCTCAG
 GGACCCAGACAGGTCCCAGGCATTTAGGGGTGGGGAATCCTGGAGCTGGTATGCAGGGTACAGGCATAC
 AAGGAACAGGCATGCAGGGAGCAGGCATACAAGGAGGAGGATGCAGGGGCAGGCATACAAGGAGTCA
 TATAAAGGAGGAGGTATAAAGGAGGAGGTATAAAGGGGCAAGCAGGCAAGGTGGAAGCCAGCCTAGC
 AGTTTTAGTCTGGGAGAGCCAGGTCACTCCACAGGATCAGGAGAAGGCAGCTTTGATCATGCAGGTTT
 TCAACTGACTGCAGATCAGATTGCCATGCTGCCCTGAGCAAAGGCAGAGTATCCTGATTTTAAAGGA
 ACAAATCCAGAAATCCACTGGAGCGTCT

ACGCGTACGCGGCCGCTCGAGCAGAAACTCATCTCAGAAGAGGATCTGGCAGCAATGATATCCTGGATT
 ACAAGGATGACGACGATAAGGTTTAA

Protein Sequence:

>RC206973 protein sequence
 Red=Cloning site Green=Tags(s)

MSSLAVRDPAMDRLRSVFNIPYEATEEQLKDFSEVGSVVSFRLVYDRETGKPKGYGFCEYQDQETA
 LSAMRNLNREFSGRALRVDNAASEKNKEELKSLGPAAPIIDSPYGDPIPEDAPESITRAVASLPPEQM
 FELMKQMKLCVQNSHQEARNMLLQNPQLAYALLQAQVVMRIMDPEIALKILHRKIHVTPVIPGKSQSVSV
 SGPFGPGPGLCPGPNVLLNQNPAPQPQHLARRPVKDIPLMQTPIQGGIPAPGPIAAVPGAGPGSL
 TPGGAMQPQLGMPGVGPVPLERQVQMSDPRAPIPRGPVTPGGLPPRGLLDAPNDPRGGTLLSVTGEVE
 PRGYLGPPHQGPPMHASGHDTRGPSSHEMRGGPLGDPRLLIQGGIPRGPMDQDQGLPMDGRGRDRAMET
 RAMETEVLTRVMERRGMETCAMETRGMEARGMDARGLEMRGPVPSRGPMTGGIQGPGPINIGAGGPPQ
 GPRQVPGISGVGNPAGMQGTGIQGTGMQAGIQGGMQAGIQGVSIQGGIQGGIQGASRQGGSQPS
 SFSPGQSQVTPQDQEKAAALIMQVLQLTADQIAMLPPEQRQSILILKEIQKSTGAS

TRTRPLEQKLISEEDLAANDILDYKDDDDKV

Chromatograms: https://cdn.origene.com/chromatograms/mk6749_h10.zip

Restriction Sites: SgfI-MluI

Cloning Scheme:



ACCN: NM_015235

ORF Size: 1848 bp

OTI Disclaimer: The molecular sequence of this clone aligns with the gene accession number as a point of reference only. However, individual transcript sequences of the same gene can differ through naturally occurring variations (e.g. polymorphisms), each with its own valid existence. This clone is substantially in agreement with the reference, but a complete review of all prevailing variants is recommended prior to use. [More info](#)

OTI Annotation: This clone was engineered to express the complete ORF with an expression tag. Expression varies depending on the nature of the gene.

Components: The ORF clone is ion-exchange column purified and shipped in a 2D barcoded Matrix tube containing 10ug of transfection-ready, dried plasmid DNA (reconstitute with 100 ul of water).

- Reconstitution Method:**
1. Centrifuge at 5,000xg for 5min.
 2. Carefully open the tube and add 100ul of sterile water to dissolve the DNA.
 3. Close the tube and incubate for 10 minutes at room temperature.
 4. Briefly vortex the tube and then do a quick spin (less than 5000xg) to concentrate the liquid at the bottom.
 5. Store the suspended plasmid at -20°C. The DNA is stable for at least one year from date of shipping when stored at -20°C.

RefSeq: [NM_015235.3](#)

RefSeq Size: 4127 bp

RefSeq ORF: 1851 bp

Locus ID: 23283

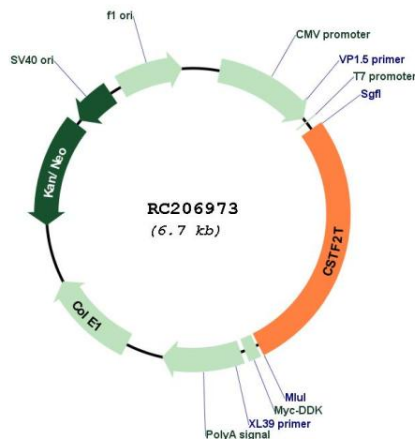
UniProt ID: [Q9H0L4](#)

Cytogenetics: 10q21.1

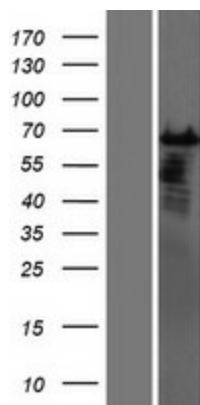
MW: 64.5 kDa

Gene Summary: May play a significant role in AAUAAA-independent mRNA polyadenylation in germ cells. Directly involved in the binding to pre-mRNAs (By similarity).[UniProtKB/Swiss-Prot Function]

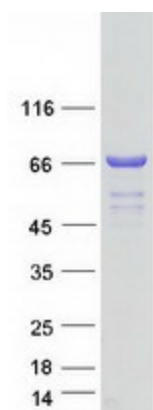
Product images:



Circular map for RC206973



Western blot validation of overexpression lysate (Cat# [LY414706]) using anti-DDK antibody (Cat# [TA50011-100]). Left: Cell lysates from untransfected HEK293T cells; Right: Cell lysates from HEK293T cells transfected with RC206973 using transfection reagent MegaTran 2.0 (Cat# [TT210002]).



Coomassie blue staining of purified CSTF2T protein (Cat# [TP306973]). The protein was produced from HEK293T cells transfected with CSTF2T cDNA clone (Cat# RC206973) using MegaTran 2.0 (Cat# [TT210002]).