

Product datasheet for **RC206972**

PRAM1 (NM_032152) Human Tagged ORF Clone

Product data:

Product Type:	Expression Plasmids
Product Name:	PRAM1 (NM_032152) Human Tagged ORF Clone
Tag:	Myc-DDK
Symbol:	PRAM1
Synonyms:	PML-RAR; PRAM-1
Mammalian Cell Selection:	Neomycin
Vector:	pCMV6-Entry (PS100001)
E. coli Selection:	Kanamycin (25 ug/mL)



[View online »](#)

ORF Nucleotide
Sequence:

>RC206972 ORF sequence
 Red=Cloning site Blue=ORF Green=Tags(s)

TTTTGTAATACGACTCACTATAGGGCGGCCGGAATTCGTCGACTGGATCCGGTACCGAGGAGATCTGCC
 GCC**CGGATCGCC**

ATGGCCATCACCTGCCTGCAGCCATGGAGAACCATCAGGACTCCGGAGCATCAAAGCAAAGTTCCAGG
 CCTCTCAGCCGGAGCCCAGCGACCTGCCAAAAAACCTCCGAAGCCTGAGTTTGGTAAACTGAAGAAGTT
 CTCCCAGCCTGAGCTAAGCGAGCACCCCAAGAAGGCCCGCTGCCTGAGTTTGGTGCAGTGTCTTTGAAG
 CCCCCCGCCCTGAGGTCACTGACCTCCCAAGAAGCCCCGCGCCTGAGGTCACTGACCTCCCAAGA
 AGCCCCCGCCCTGAGGTCACTGACCTCCCAAGAAGCCCCGCGCCTGAGGTCACTGACCTCCCAAA
 GAAGCCGTCCAACTGGAGTTGAGTGACCTCTCCAAGAAGTTCCACAGCTGGGGCCACTCCGTTTCCA
 AGGAAGCCCTGCAGCCTGAGGTGCGTGAGGCCCTTTGAAGCCTCGCTGCCGGAGCCTGGTGCGCCGG
 CCCGAAACCCCTGCAGCCGACGAACCTAGTACCCCGCCAGACCCCTCCGAACCCAAATCCGGCCG
 ATTCCCCAGGAAGCTCTGGCAACCCGAGCCGGTGAAGTACCCCGAGGTCCCGCAGCCTGAGTTGAGT
 ACCTTTCCAAGAAGCCTGCGCAGCCTGAGTTCAACGTGTACCCAAAAAGCCTCCGAGCCTCAGTCCG
 GTGGCCTCCCTAAGAAGTCCGTGCCGAGCCTGAGTTACGCGAGGCCCTCAGACTCCCTCTGGAAGCC
 TCAGTCCAGCGAGCCGAAGCGGACTCCAGCGCTTTCCAAAAAGCCTCCAGCCTCCGCTGAGTGAC
 TTTCCAAGAAGCCTCCGAGCCTGAGCTTGGGGACCTACCAGGACCTCCTCAGAGCCGAAGTCAGCG
 TGCTTCCAAGAGGCCGCGGCCGCGCAATTCAAAGCGCTCTCCAAGAAGCCCCGAGCCCGAGCTGGG
 CGGCCTCCCAGGACCTCCTCAGAGCCGAGTTCAACTCACTCCCAGGAAGCTGCTGCAGCCGAGCGC
 CGGGGGCACCCCGCAAGTTCTCACAGCCTGAGCCAGCGCTGTCTCAAGAGACACCCGACCTGAGT
 TCTTCGGTGATCTCCCTCGAAAGCCTCCACTCCCAGCTCCGCTCCGAGAGCTCACTGCCTGCCGCCGT
 GGCCGGCTTCAGCTCCCGCACCCGCTCAGCCCTGGGTTTGGAGCCGCTGGGACACCCCGCTGGAGGTCA
 GGAGCCCTGGTTCACAGTGGAGGGGCCAGGCCAGGCCCTCAGACCCAGCCATCCACCCCGCGGAGGCCCTC
 TGCCCCCTGCCAGCAGCCTGGGACACCCTCCAGCCAAGCCCCGCTGCCCGGGGCCCGTGGATATGCA
 GAGCTTTCGGAGACCCTTCGAGCATCCATAGATCTACGGAGGACCCGCTCGGCCGCTGGCTCCACTTC
 CAGGACCGACAGCCTGAAGACATCCCGCAGGTCCAGATGAGATCTACGAGCTGTATGACGATGTGGAAC
 CCAGAGATGACTCAGCCCCAGCCCCAAGGGCAGAGATGAAGCGCCCTCAGTTCAGCAAGCCGCCAGGAG
 GCCACCACAAGACCCAGCGCTCAGGAAGGAGAAGGATCCCAGCCACAGCAGTTGCCACCCATGGACCCA
 AAGTTGCTGAAGCAGCTGAGGAAGGCAGAGAAGGCCGAGAGGGAGTTCCGGAAGAAGTTCAAGTTTGAAG
 GGGAGATCGTGGTTCACACGAAGATGATGATCGACCCCAACGCTAAGACACGTCGCGGGGGTGGCAAGCA
 CCTCGGGATCCGGCGCGGGGAGATCCTGGAGGTGATCGAGTTCACCAGCAATGAGGAGATGCTGTGCCGG
 GACCCCAAAGGCAAAATATGGCTACGTGCCAGAACAGCGCTCCTGCCCTGGAGACGGAGGTGTACGATG
 ATGTGCACTTCTGCGATCCCCTGGAAAACCAACCACTCCCCTGGGACGG

ACGCGTACGCGGCCGCTCGAGCAGAACTCATCTCAGAAGAGGATCTGGCAGCAAATGATATCCTGGATT
 ACAAGGATGACGACGATAAGGTTTAA

Protein Sequence: >RC206972 protein sequence
Red=Cloning site Green=Tags(s)

MAHHLPAAMENHQDFRSIKAKFQASQPEPSDLPKKPPKPEFGKLLKFSQPELSEHPKKAPLPEFGAVSLK
 PPPPEVTDLPKKPPPPEVTDLPKKPPPPEVTDLPKKPPPPEVTDLPKKPSKLELSDLKKFPQLGATPFP
 RKPLQPEVGEAPLKASLPEPGAPARKPLQPELDEL SHPARPPSEPKSGAFPRKLWQPEAGEATPRSPQPELS
 TFPKKPAQPEFNVYPKPPQPQVGGLPKKSVQPPEFSEAAQTPLWKQPSSEPKRDSAFPKKASQPPLSD
 FPKKPPQPELGDLTRTSSEPEVSVLPKRPRPAEFKALS KKKPPQPELGGLPRTSSEPEFNSLPRKLLQPER
 RGPPrKF SQPEPSAVLKRHPQPEFFGDLPRKPPLPSSASESSLPAAVAGFSSRHPLSPGF GAAGTPRWRS
 GGLVHSGGARPLRPSHPRRRPLPASSLGHPPAKPPLPPGPVDMQSFRRPSAASIDLRRTRSAAGLHF
 QDRQPEDIQVPDEIYEL YDDVEPRDSSPSPKGRDEAPSVQQAARRPPQDPALRKEKDPQPQLPMPDP
 KLLKQLRKA EKAEREFRKKFKFEGEIVVHTKMMIDPNAKTRRGGGKHLGIRGEILEVIEFTSNEEMLCR
 DPKGKYGYVPR TALLPLETEVYDDVDFCDPLENQPLPLGR

TRTRPLEQKLISEEDLAANDILDYKDDDDKV

Chromatograms: https://cdn.origene.com/chromatograms/mk6331_d12.zip

Restriction Sites: Sgfl-MluI

Cloning Scheme:

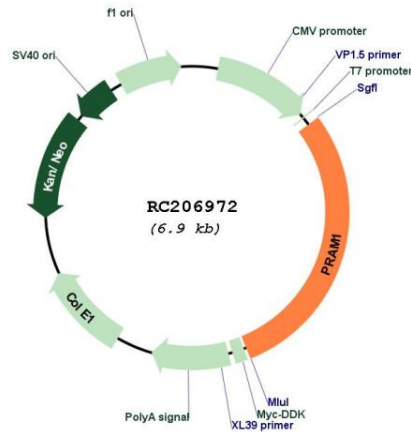


ACCN: NM_032152

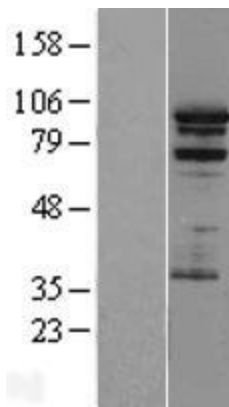
ORF Size: 2010 bp

OTI Disclaimer:	<p>Due to the inherent nature of this plasmid, standard methods to replicate additional amounts of DNA in E. coli are highly likely to result in mutations and/or rearrangements. Therefore, OriGene does not guarantee the capability to replicate this plasmid DNA. Additional amounts of DNA can be purchased from OriGene with batch-specific, full-sequence verification at a reduced cost. Please contact our customer care team at custsupport@origene.com or by calling 301.340.3188 option 3 for pricing and delivery.</p> <p>The molecular sequence of this clone aligns with the gene accession number as a point of reference only. However, individual transcript sequences of the same gene can differ through naturally occurring variations (e.g. polymorphisms), each with its own valid existence. This clone is substantially in agreement with the reference, but a complete review of all prevailing variants is recommended prior to use. More info</p>
OTI Annotation:	<p>This clone was engineered to express the complete ORF with an expression tag. Expression varies depending on the nature of the gene.</p>
Components:	<p>The ORF clone is ion-exchange column purified and shipped in a 2D barcoded Matrix tube containing 10ug of transfection-ready, dried plasmid DNA (reconstitute with 100 ul of water).</p>
Reconstitution Method:	<ol style="list-style-type: none">1. Centrifuge at 5,000xg for 5min.2. Carefully open the tube and add 100ul of sterile water to dissolve the DNA.3. Close the tube and incubate for 10 minutes at room temperature.4. Briefly vortex the tube and then do a quick spin (less than 5000xg) to concentrate the liquid at the bottom.5. Store the suspended plasmid at -20°C. The DNA is stable for at least one year from date of shipping when stored at -20°C.
RefSeq:	NM_032152.2
RefSeq Size:	2235 bp
RefSeq ORF:	2013 bp
Locus ID:	84106
UniProt ID:	Q96QH2
Cytogenetics:	19p13.2
Protein Families:	Druggable Genome
MW:	74 kDa
Gene Summary:	<p>The protein encoded by this gene is similar to FYN binding protein (FYB/SLAP-130), an adaptor protein involved in T cell receptor mediated signaling. This gene is expressed and regulated during normal myelopoiesis. The expression of this gene is induced by retinoic acid and is inhibited by the expression of PML-RARalpha, a fusion protein of promyelocytic leukemia (PML) and the retinoic acid receptor-alpha (RARalpha). [provided by RefSeq, Jul 2008]</p>

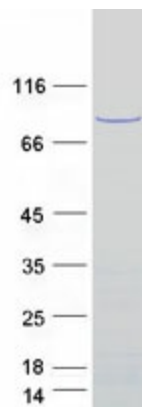
Product images:



Circular map for RC206972



Western blot validation of overexpression lysate (Cat# [LY410307]) using anti-DDK antibody (Cat# [TA50011-100]). Left: Cell lysates from untransfected HEK293T cells; Right: Cell lysates from HEK293T cells transfected with RC206972 using transfection reagent MegaTran 2.0 (Cat# [TT210002]).



Coomassie blue staining of purified PRAM1 protein (Cat# [TP306972]). The protein was produced from HEK293T cells transfected with PRAM1 cDNA clone (Cat# RC206972) using MegaTran 2.0 (Cat# [TT210002]).