

Product datasheet for **RC206971**

SLC49A3 (NM_032219) Human Tagged ORF Clone

Product data:

Product Type:	Expression Plasmids
Product Name:	SLC49A3 (NM_032219) Human Tagged ORF Clone
Tag:	Myc-DDK
Symbol:	SLC49A3
Synonyms:	LP2561; MFSD7
Mammalian Cell Selection:	Neomycin
Vector:	pCMV6-Entry (PS100001)
E. coli Selection:	Kanamycin (25 ug/mL)



[View online »](#)

ORF Nucleotide Sequence:

>RC206971 ORF sequence
 Red=Cloning site Blue=ORF Green=Tags(s)

TTTTGTAATACGACTCACTATAGGGCGGCCGGGAATTCGTCGACTGGATCCGGTACCGAGGAGATCTGCC
 GCC**GCGATCGCC**

ATGGCGGGCCGACGGAGGCCGAGACGGGGTTGGCCGAGCCCCGGGCCCTGTGCGCGCAGCGGGGCCACC
 GCACCTACGCGCGCCGCTGGGTGTTCTGCTCGGATCAGCCTGCTCAACTGCTCCAACGCCACGCTGTG
 GCTCAGCTTTGCACCTGTGGCTGACGTCATTGCTGAGGACTTGGTCTGTCCATGGAGCAGATCAACTGG
 CTGTCACTGGTCTACCTCGTGGTATCCACCCCATTTGGCGTGGCGCCATCTGGATCCTGGACTCCGTCG
 GGCTCCGTGCGGCACCATCCTGGGTGCGTGGCTGAACCTTTGCCGGGAGTGTGCTACGCATGGTGCCTG
 CATGGTTGTTGGGACCAAAACCCATTTGCCTTCTCATGGGTGGCCAGAGCCTCTGTGCCCTTGCCAG
 AGCCTGGTCATCTTCTCCAGCAAGCTGGCTGCCTTGTGGTCCCAGAGCACCAGCGAGCCACGGCCA
 ACATGCTCGCCACCATGTGCAACCCTCTGGGCGTCTTGTGGCCAATGTGCTGTCCCTGTGCTGGTCAA
 GAAGGGTGAAGACATTCCGTTAATGCTCGGTGTCTATACCATCCCTGCTGGCGTGTCTGCTGTGCTCC
 ACCATCTGCCTGTGGGAGAGTGTGCCCCCACCCTGCTGCGGGGGTGGCAGCTCCACCTCAGAGA
 AGTTCTGGATGGGCTCAAGCTGCTCATGTGGAACAAGGCCTATGTCATCCTGGCTGTGTGCTTGGGGG
 AATGATCGGGATCTGCCAGCTTCTCAGCCCTCCTGGAGCAGATCCTCTGTGCAAGCGGCCACTCCAGT
 GGGTTTTCCGGCTCTGTGGCGCTCTTTCATCACGTTTGGGATCCTGGGGGACTGGCTCTCGGCCCT
 ATGTGGACCGGACCAAGCACTTCACTGAGGCCACCAAGATTGGCCTGTGCTGTTCTCTGCGCTGCGT
 GCCCTTTGCCCTGGTGTCCAGCTGCAGGGACAGACCTTGCCTGGCTGCCACCTGCTCGCTGCTCGGG
 CTGTTTGGCTTCTCGGTGGGCCCCGTGGCATGGAGTTGGCGTGCAGTGTCTTCCCCGTGGGGGAGG
 GGGTCCACAGGCATGATCTTTGTGCTGGGGCAGGCCGAGGGAATACTCATCATGCTGGCAATGACGGC
 ACTGACTGTGCGACGCTCGGAGCCGCTTGTCCACCTGCCAGCAGGGGGAGGATCCACTTGACTGGACA
 GTGCTCTGCTGCTGATGGCCGGCTGTGCACCTTCTCAGCTGCATCCTGGCGGTCTTCTCCACACCC
 CATAACGGCGCTGCAGGCCGAGTCTGGGGAGCCCCCTCCACCCGTAACGCCGTGGGCGGCGCAGACTC
 AGGGCCGGGTGTGGACCGAGGGGAGCAGGAAGGGCTGGGGTCTGGGGCCAGCAGCGGACTCCGGAG
 TGCACGGCGAGGGGGGCTCGCTAGAGGACCCAGAGGGCCGGGAGCCCCACCCAGCCTGCCACCGAG
 CGACTCCCGTGCGAAGGCCAGCAGCCACCGCGCCCTCCCGCCCCGAGACTCGCAGGCAGGGT
 CCAAGCGTCCAGGTTATTGACCCGGCTGGGTCTCACTCCTCTCTCTCCCGTGGGTGATCAG

ACGCGTACGCGGCCGCTCGAGCAGAAACTCATCTCAGAAGAGGATCTGGCAGCAAATGATATCCTGGATT
 ACAAGGATGACGACGATAAGGTTTAA

Protein Sequence:

>RC206971 protein sequence
 Red=Cloning site Green=Tags(s)

MAGPTEAETGLAEPRALCAQRGHRTYARRWVFLLAISLLNCSNATLWLSFAPVADVIAEDLVL SMEQINW
 LSLVYL VVSTPFVAAI WILDSVGLRAATILGAWLNFAGSVLRMVP CMVVG TQNPFAFLMGGQSLCALAQ
 SLVIFSPAKLAALWFPEHQ RATANMLATMSNPLGVLVANVLSPLVKKGED IPLMLGVYTI PAGVCLLS
 TICLWESVPPTPPSAGAA SSTSEKFLDGLKLLMWNKAYVILAVCLGGMIGISASF SALLEQILCASGHSS
 GFSGLCGALFITFGILGALALGPYVDR TKHFTEATKIGLCLFSLACV PFALVSQ LQGQTLALAATCSLLG
 LFGFSVGPVAMELAVECSFPVGE GAATGMIFVLGQAEGILIMLAMTALTVRRSEPSLSTCQQGEDPLDWT
 VSLLL MAGLCTFFSCILAVFFHTPYRRLQAESGEP PSTRNAVGGADSGPGVDRGGAGRAGV LGPSTATPE
 CTARGASLEDPRGPGSPHPACHRATPRAQGAATDAPSRPGRLAGRVQASRFIDPAGSHSSFSSPWVIT

TRTRPLEQKLI SEEDLAANDILDYKDDDDKV

Chromatograms:

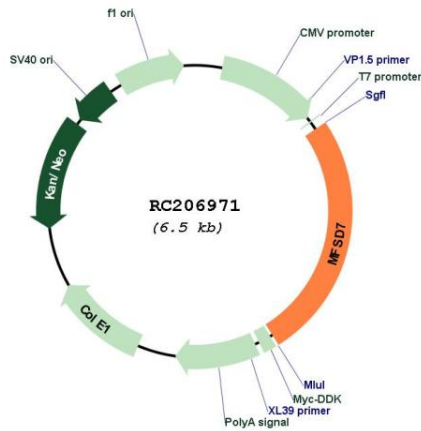
https://cdn.origene.com/chromatograms/mk6331_a03.zip

Restriction Sites:

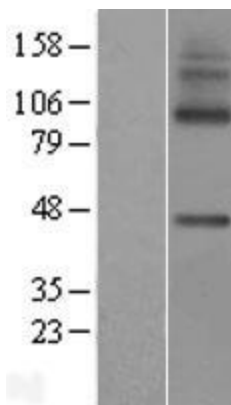
SgfI-MluI

Cytogenetics: 4p16.3
 Protein Families: Transmembrane
 MW: 58.3 kDa

Product images:



Circular map for RC206971



Western blot validation of overexpression lysate (Cat# [LY410279]) using anti-DDK antibody (Cat# [TA50011-100]). Left: Cell lysates from untransfected HEK293T cells; Right: Cell lysates from HEK293T cells transfected with RC206971 using transfection reagent MegaTran 2.0 (Cat# [TT210002]).