

Product datasheet for **RC206970**

PINK1 (NM_032409) Human Tagged ORF Clone

Product data:

| | |
|---------------------------|--|
| Product Type: | Expression Plasmids |
| Product Name: | PINK1 (NM_032409) Human Tagged ORF Clone |
| Tag: | Myc-DDK |
| Symbol: | PINK1 |
| Synonyms: | BRPK; PARK6 |
| Mammalian Cell Selection: | Neomycin |
| Vector: | pCMV6-Entry (PS100001) |
| E. coli Selection: | Kanamycin (25 ug/mL) |



[View online »](#)

ORF Nucleotide Sequence:

>RC206970 representing NM_032409.
 Blue=ORF Red=Cloning site Green=Tag(s)

```

GCTCGTTTAGTGAACCGTCAGAATTTTGTAAACGACTCACTATAGGGCGGCCGGGAATTCGTGCGACTG
GATCCGGTACCGAGGAGATCTGCCGCCCGGATCGCC
ATGGCGGTGCGACAGGCGCTGGGCCGCGCCTGCAGCTGGGTGAGCGCTGCTGCTGCGCTTACCGGGC
AAGCCCGGCCGGCCTACGGCTTGGGGCGGCCGCGGCCGGCGGGCTGTGTCCGCGGGAGCGTCCA
GGCTGGGCGCGAGGACCGGGCGCGGAGCCTCGCAGGGTGGGCTCGGGCTCCCTAACCGTCTCCGCTT
TCCGCCAGTCGGTGGCGGGCTGGCGCGCGGTTGCAGCGCAGTTCTGGTGGCGGCTGGGGCTGC
GCGGGCCCTTGGCGCGGGCAGTCTTTCTGGCCTTGGGCTAGGGCTGGGCTCATCGAGAAAAACAG
GCGGAGAGCCGGCGGGCGGTCTCGGCTGTGAGGAGATCCAGGCAATTTTACCCAGAAAAGCAAGCCG
GGGCTGACCCGTTGGACACGAGACGCTTGCAGGGCTTTCGGCTGGAGGAGTATCTGATAGGGCAGTCC
ATTGTAAGGGTGCAGTGTGTGTATGAAGCCACCATGCCTACATTGCCCCAGAACCTGGAGGTG
ACAAAGAGCACCGGGTTGCTTCCAGGGAGAGGCCAGGTACCAGTGCACCAGGAGAAGGGCAGGAGCGA
GCTGCGGGGGCCCTGCCTTCCCTTGGCCATCAAGATGATGTGGAACATCTCGCAGGTTCTCCAGC
GAAGCCATCTTGAACACAATGAGCCAGGAGCTGGTCCCAGCGAGCCGAGTGGCCTTGGCTGGGGAGTAT
GGAGCAGTCACCTACAGAAAATCCAAGAGAGGTCCAAGCAACTAGCCCCACCCCAACATCATCCGG
GTTCTCCGCGCCTTACCTCTTCCGTGCCGCTGCTGCCAGGGGCCCTGGTGGACTACCCTGATGTGCTG
CCCTCACGCCCTCACCCCTGAAGGCTGGGCCATGGCCGGACGCTGTTCTCGTTATGAAGAACTATCCC
TGTACCCTGCGCCAGTACCTTTGTGTGAACACACCCAGCCCCGCTCGCCGCCATGATGCTGCTGCAG
CTGCTGGAAGCGTGGACCATCTGGTTCAACAGGGCATCGCGCACAGAGACCTGAAATCCGACAACATC
CTTGTGGAGCTGGACCCAGACGGCTGCCCTGGCTGGTGTGATCGCAGATTTTGGCTGCTGCTGGCTGAT
GAGAGCATCGGCCTGCAATTGCCCTTGCAGAGCTGGTACGTGGATCGGGCGGAAACGGCTGTCTGATG
GCCCCAGAGGTGTCCACGGCCCGTCTGGCCCCAGGGCAGTGATTGACTACAGCAAGGCTGATGCCTGG
GCAAGTGGGAGCCATCGCCTATGAAATCTTGGGCTTGTCAATCCCTTCTACGGCCAGGGCAAGGCCAC
CTTGAAGCCGACAGTACCAAGAGGCTCAGCTACCTGCACTGCCGAGTCAAGTGCCTCCAGACGTGAGA
CAGTTGGTGGGGCACTGCTCCAGCGAGAGGCCAGCAAGAGACCATGCCCCGAGTAGCCGCAAATGTG
CTTCATCTAAGCCTCTGGGGTGAACATATTCTAGCCCTGAAGAATCTGAAGTTAGACAAGATGGTTGGC
TGGCTCTCCAACAATCGGCCCACTTTGTTGGCCAACAGGCTCACAGAGAAGTGTGTGTGGAACA
AAAATGAAGATGCTTTTCTGGTAACCTGGAGTGTGAAACGCTCTGCCAGGCAGCCATCCTCCTCTGC
TCATGGAGGGCAGCCCTG
ACGCGTACGCGGCCGCTCGAGCAGAAACTCATCTCAGAAGAGGATCTGGCAGCAAATGATATCCTGGAT
TACAAGGATGACGACGATAAGGTTAAACGGCCGGC
    
```

Protein Sequence:

>Peptide sequence encoded by RC206970
 Blue=ORF Red=Cloning site Green=Tag(s)

```

MAVRQALGRQLGRALLRFTGKPRAYGLGRPGPAAGCVRGERPGWAAGPGAEP RRVGLGLPNRLRF
FRQSVAGLAARLQRQFVVRWAGCAGPCGRAVFLAFGLGLLIEEKQAESRRAVSACQEIQAIFTQKSKP
GPDPLDTRRLQGFRL E EYLIGQSIGKGC SAAVYEATMPTLPQNLVTKSTGLLPGRPGTSAPGEGQER
AAGAPAFPLAIKMMWNISAGSSSEAILNMSQELVPASRVALAGEYGAVTYRKS KRGPQLAPHPNII R
VLRAFTSSVPLLPGALVDYDPVLP S R L H P E G L H G R T L F L V M K N Y P C T L R Q Y L C V N T P S P R L A A M M L L Q
LLEGVDHLVQQGIAHRDLKSDNILVELDPDGPWLVIADFGCCLADESIGLQLPFSWYVDRGGNGCLM
APEVSTARPGPRAVIDYSKADAWAVGAIAYEIFGLVNP FYGQGAHLESRSYQEAQLPALPESVPPDVR
QLVRALLQREASKRPSARVAANV L H L S L W G E H I L A L K N L K L D K M V G W L L Q Q S A A T L L A N R L T E K C C V E T
KMKMLFLANLECE TL C Q A A I L L C S W R A A L
TRTRPLEQKLI SEEDLAANDILDYKDDDDKV
    
```

Chromatograms:

https://cdn.origene.com/chromatograms/mk6784_a04.zip

Restriction Sites:

SgfI-MluI

Cloning Scheme:



ACCN: NM_032409

ORF Size: 1743 bp

OTI Disclaimer: The molecular sequence of this clone aligns with the gene accession number as a point of reference only. However, individual transcript sequences of the same gene can differ through naturally occurring variations (e.g. polymorphisms), each with its own valid existence. This clone is substantially in agreement with the reference, but a complete review of all prevailing variants is recommended prior to use. [More info](#)

OTI Annotation: This clone was engineered to express the complete ORF with an expression tag. Expression varies depending on the nature of the gene.

Components: The ORF clone is ion-exchange column purified and shipped in a 2D barcoded Matrix tube containing 10ug of transfection-ready, dried plasmid DNA (reconstitute with 100 ul of water).

- Reconstitution Method:**
1. Centrifuge at 5,000xg for 5min.
 2. Carefully open the tube and add 100ul of sterile water to dissolve the DNA.
 3. Close the tube and incubate for 10 minutes at room temperature.
 4. Briefly vortex the tube and then do a quick spin (less than 5000xg) to concentrate the liquid at the bottom.
 5. Store the suspended plasmid at -20°C. The DNA is stable for at least one year from date of shipping when stored at -20°C.

Note: Plasmids are not sterile. For experiments where strict sterility is required, filtration with 0.22um filter is required.

RefSeq Size: 2680 bp

RefSeq ORF: 1746 bp

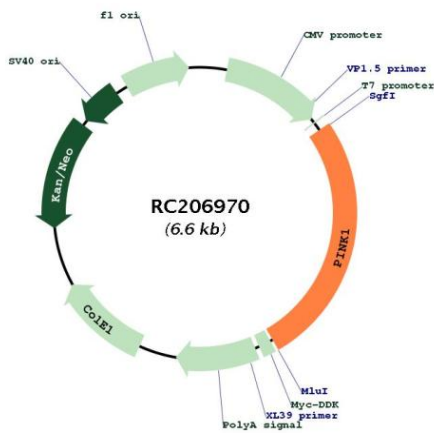
Locus ID: 65018

UniProt ID: [Q9BXM7](#)

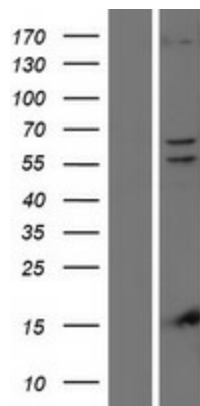
Cytogenetics: 1p36.12
Domains: pkinase, TyrKc, S_TKc
Protein Families: Druggable Genome, Protein Kinase
Protein Pathways: Parkinson's disease
MW: 62.7 kDa

Gene Summary: This gene encodes a serine/threonine protein kinase that localizes to mitochondria. It is thought to protect cells from stress-induced mitochondrial dysfunction. Mutations in this gene cause one form of autosomal recessive early-onset Parkinson disease. [provided by RefSeq, Jul 2008]

Product images:



Circular map for RC206970



Western blot validation of overexpression lysate (Cat# [LY410150]) using anti-DDK antibody (Cat# [TA50011-100]). Left: Cell lysates from untransfected HEK293T cells; Right: Cell lysates from HEK293T cells transfected with RC206970 using transfection reagent MegaTran 2.0 (Cat# [TT210002]).