

Product datasheet for **RC206968**

PCDH17 (NM_001040429) Human Tagged ORF Clone

Product data:

Product Type:	Expression Plasmids
Product Name:	PCDH17 (NM_001040429) Human Tagged ORF Clone
Tag:	Myc-DDK
Symbol:	PCDH17
Synonyms:	PCDH68; PCH68
Mammalian Cell Selection:	Neomycin
Vector:	pCMV6-Entry (PS100001)
E. coli Selection:	Kanamycin (25 ug/mL)
ORF Nucleotide Sequence:	>RC206968 representing NM_001040429 Red=Cloning site Blue=ORF Green=Tags(s)

TTTTGTAATACGACTCACTATAGGGCGGCCGGAATTCGTCGACTGGATCCGGTACCGAGGAGATCTGCC
GCC**CGATCGCC**

ATGTACCTTTCCATCTGTTGCTGCTTTCTCTATGGGCCCTGCCCTCACTCTCAAGAACCTCAACTACT
CCGTGCCGAGGAGCAAGGGGCCGACGGTATCGGGAACATCGGCAGGGATGCTCGACTGCAGCCTGG
GCTTCCGCTGCAGAGCGCGCGGAGGGCGCAGCAAGTCGGGTAGCTACCGGTGCTGGAGAATCC
GCACCGCACTGCTGGACGTGGACGACAGCGGGCTCCTCTACCAAGCAGCGCATCGACCGGAGT
CCCTGTGCCGCCAATGCCAAGTGCCAGCTGTCCCTCGAGGTGTCGCCAACGACAAGGAGATCTGCAT
GATCAAGGTAGAGATCCAGGACATCAACGACAACGCGCCCTCCTTCTCCTCGGACCAGATCGAAATGGAC
ATCTCGGAGAACGCTGCTCCGGGCACCCGCTTCCCCCTCACACGCGACATGACCCCGACCCGGCGAGA
ATGGGCTCCGCACCTACCTGCTCACGCGCAGCATCACGGCTCTTTGGACTGGACGTTAAGTCCCGCGG
CGACGGCACCAAGTTCCAGAACTGGTCATCCAGAAGGCTCTGGACCGGAGCAACAGAATCACCATACG
CTCGTGTGACTGCCCTGGACGGTGGCGAGCCTCACGTTCCGCCACCGTACAGATCAACGTGAAGGTGA
TTGACTCCAACGACAACAGCCGGTCTTCGAGGGCCATCCTACTTGGTGAAGTGCACCGGAGTCC
GCTGGGTACAGTGGTATCGATCTGAACGCCACCGCCGATGAAGTCCCAATGGTGAAGTGCCTAC
TCTTTCAGCAGTACGTGCCTGACCGCTGCGGGAGCTTCTCCATCGACCCCAAGACCGGCTAATCC
GTGTGAAGGGCAATCTGGACTATGAGGAAAACGGGATGCTGGAGATTGAGGTGCAGGCCCGAGACCTGGG
GCCTAACCTATCCCAGCCCACTGCAAAGTCACGGTCAAGCTCATCGACCACAACGACAATGCGCGCTCC
ATCGTTTTCTGCTCCGTGCGCCAGGGGGCGCTGAGCGAGGCCGCCCTCCCGCACCGTATCGCCCTGG
TGCGGGTCACTGACCGGACTCTGGCAAGAACGGACAGCTGCAGTGTGGGTCTAGGCGGAGGAGGGAC
GGGCGGCGGGGGGCTGGGCGGGCCCGGGGTTCCGTCCTTCAAGCTTGAGGAGAATACGACAAC
TTCTACACGGTGGTACTGACCGCCGCTGGACCGGAGACACAAGACGAGTACAACGTGACCATCGTGG
CGCGGGACGGGGCTCTCTCCCTCAACTCCACCAAGTCGTTCCGATCAAGATTCTAGACGAGAACGA
CAACCCGCTCGTTACCAAAGGGCTCTACGTGCTTCAGGTGCACGAGAACAACATCCCGGAGAGTAC



[View online >](#)

CTGGGCTCTGTGCTCGCCCAGGATCCCCGACCTGGGCCAGAACGGCACCGTATCCTACTCTATCCTGCCCT
CGCACATCGGGCAGCTGTCTATCTACACCTATGTGTCTGTGAATCCCACGAAACGGGGCCATCTACGCCCT
GCGCTCCTTTAACTTCGAGCAGACCAAGGCTTTTGAGTTCAAGGTGCTTGCTAAGGACTCGGGGGCGCCC
GCGCACTTGAGAGCAACGCCACGGTGAGGGTGACAGTGTAGACGTGAATGACAACGCGCCAGTGATCG
TGCTCCCCACGCTGCAGAACGACCCGCGAGCTGCAGGTGCCGCGCAACGCTGGCCTGGGCTATCTGGT
GAGCACTGTGCGCGCCCTAGACAGCGACTTCGGCGAGAGCGGGCGTCTCACCTACGAGATCGTGGACGGC
AACGACGACCACCTGTTTGAGATCGACCCGTCCAGCGCGAGATCCGACGCTGCACCCTTCTGGGAGG
ACGTGACGCCCGTGGTGGAGCTGGTGGTGAAGGTGACCGACCACGCAAGCCTACCCTGTCCGAGTGCC
CAAGCTCATCATCCGCTCGGTGAGCGGATCCCTTCCCAGGGGGTACCACGGGTGAATGGCGAGCAGCAC
CACTGGGACATGTGCTGCCCTCATCGTGACTCTGAGCACTATCTCCATCATCCTCCTAGCGGCCATGA
TCACCATCGCCGTCAGTGCAAGCGCGAGAACAAGGAGATCCGCACTTACAACGCGCATCGCCGAGTA
CAGCCACCCGAGCTGGGTGGGGCAAGGGCAAGAAGAAGAAGATCAACAAAAATGATATCATGCTGGT
CAGAGCGAAGTGAGGAGAGGAACGCCATGAACGTCATGAACGTGGTGGAGAGCCCTCCCTGGCCACCT
CCCCATGTACTTCGACTACCAGACCCGCTGCCCTCAGCTCGCCCCGGTGGAGGTGATGATCTCAA
ACCGGCCCTCAACAACCTGACTGTCCCTCAGGGGCACGCGGGCTGCCACACCAGCTTCACCGGACAAGGG
ACTAATGCAAGCGAGACCCTGCCACTCGGATGCCATAATTCAGACAGACAATTTCCCAGAGGCCCA
ATTACATGGGCAGCAGGCAGCAGTTTGTCAAAGTAGCTCCACGTTTAAAGACCCAGAAAAGGCCAGCCT
GAGAGACAGTGGGCACGGGGACAGTGATCAGGCTGACAGTGACCAAGACACTAACAAAGGCTCCTGCTGT
GACATGTCTGTTAGGGAGGCACTCAAGATGAAAACACTTCAACTAAAAGCCAACCACTTGAACAAGAAC
CAGAAGAGTGTGTTAATTGCACAGATGAATGCCGAGTGCTTGGTCACTTCTGACAGGTGCTGGATGCCACA
GTTCCCTGCAGCCAATCAGGCTGAAAATGCAGATTACCGCACAATCTCTTTGTACCTACAGTTGAAGCT
AATGTTGAGACTGAGACTTACGAACTGTGAATCCCACTGGGAAAAAGACTTTTTGTACATTTGAAAAAG
ACAAGCGAGAGCACACTATTCTCATTGCCAACGTTAAACCTTATTTAAAAGCCAAACGTGCCCTGAGCCC
TCTCCTCAAGAGGTCCCCTCAGCATCAAGCAGCCCAACCAAGGCGTGCATCGAGCCTTGACCTCAACA
AAAGGCTCCCTGGATGGCTGTGAAGCAAAACAGGAGCCCTGGCTGAAGCAAGCAGTCAGTACTTGCCCA
CTGACAGTCAATATCTGTACCTAGTAAGCAACCAAGAGACCCTCCCTCATGGCTTCCGATCAGATGGC
AAGGGTCTTTGCAGATGTGCATTCCAGAGCCAGCCGGATTCCAGTGAGATGGGTGCTGTTCTTGAGCAG
CTTGACCACCCCAACAGGGATCTGGGCAGAGAGTCTGTGGATGCAGAGGAAGTTGTGAGAGAAATTGATA
AGCTTTTGCAAGACTGCCGGGAAACGACCCTGTGGCTGTGAGAAAG

ACGCGTACGCGGCCGCTCGAGCAGAACTCATCTCAGAAGAGGATCTGGCAGCAAATGATATCCTGGATT
ACAAGGATGACGACGATAAGGTTTAA

Protein Sequence: >RC206968 representing NM_001040429
 Red=Cloning site Green=Tags(s)

MYLSICCCFLLWAPALTLKLNLYSPVEEQGAGTVIGNIGRDARLQPLPAERGGGGRSKSGSYRVLENS
 APHLLDVDADSGLLYTKQRIDRESLCRHNAKQQLSLEVFANDKEICMIKVEIQDINDNAPSFSSDQIEMD
 ISENAAPGTRFPLTSAHDPDAGENGLRITYLLTRDDHGLFGLDVKSRGDGTFPELVIQKALDREQQNHHT
 LVLTAIDGGEPPRSATVQINVKVIDSNDNSPVFEAPSYLVELPENAPLGTVVIDLNATDADEGPNGEVLY
 SFSSYVDRVRELFSIDPKTGLIRVKGNDLVEENGMLEIDVQARDLGPNPIPAHCKVTVKLIDRNDNAPS
 IGFVSVRQGALSEAAPPVTIALVRVTRDRDSGKNGQLQCRVLGGGGTGGGGGLGGPGGSVPFKLEENYDN
 FYTVVTRPLDRETQDEYNVTIVARDGGSPLNSTKSFAIKILDENDNPPRFTKGLVYLQVHENNIPGEY
 LGSVLAQDPDLGQNGTVSYSILPSHIGDVSITYYVSVNPTNGAIYALRSFNFEQTKAFEFKVLAKDSGAP
 AHLESNATVRVTVDVNDNAPVIVLPTLQNDTAEQVPRNAGLGYLVSTVRALDSDFGESGRLTYEIVDG
 NDDHLFEIDPSSGEIRTLHPFWEDVTPVELVVKVTDHGKPTLSAVAKLIIRSVSGSLPEGVPRVNGEQH
 HWDMSLPLIVTLSTISIIILLAAMITIAVKCKRENKEIRTYNCRIAEYSHPLGGGKGGKKKINKNDIMLV
 QSEVEERNAMNMNVVSSPSLATSPMYFDYQTRLPLSSPRSEVMYLPASNNLTVPQGHAGCHTSFTGQG
 TNASET PATRMSIIQTDNFAEPNYMGSRQQFVQSSSTFKDPERASLRDSGHGDSQADSDQDTNKGSCC
 DMSVREALKMKTTSTKSQPLEQEPEECVNCTDECRVLGHSDRCWMPQFPANQAENADYRTNLFVPTVEA
 NVETETETVNTGKKTCTFGKDKREHTILIANVKPYLKAKRALSPLLQEVPSASSSPTKACIEPCTST
 KGLSDGCEAKPGALAEASSQYLPTDSQYLSPSKQPRDPPFMSDQMARVFADVHSRASRDSSEMGAVLEQ
 LDHPNRDLGRESVDAEEVVREIDKLLQDCRGNPVAVRK

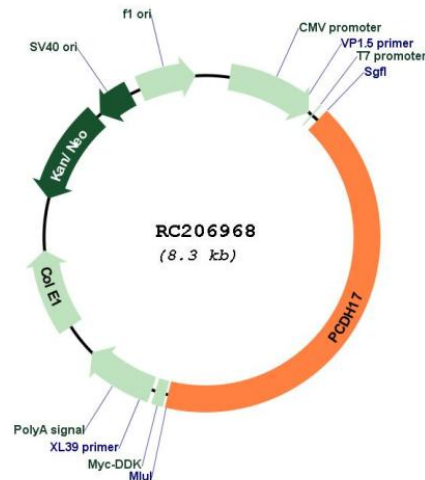
TRTRPLEQKLISEEDLAANDILDYKDDDDKV

Chromatograms: https://cdn.origene.com/chromatograms/mg3102_b05.zip

Restriction Sites: SgfI-MluI

Cloning Scheme:



Plasmid Map:


ACCN: NM_001040429

ORF Size: 3477 bp

OTI Disclaimer: The molecular sequence of this clone aligns with the gene accession number as a point of reference only. However, individual transcript sequences of the same gene can differ through naturally occurring variations (e.g. polymorphisms), each with its own valid existence. This clone is substantially in agreement with the reference, but a complete review of all prevailing variants is recommended prior to use. [More info](#)

OTI Annotation: This clone was engineered to express the complete ORF with an expression tag. Expression varies depending on the nature of the gene.

Components: The ORF clone is ion-exchange column purified and shipped in a 2D barcoded Matrix tube containing 10ug of transfection-ready, dried plasmid DNA (reconstitute with 100 ul of water).

Reconstitution Method:

1. Centrifuge at 5,000xg for 5min.
2. Carefully open the tube and add 100ul of sterile water to dissolve the DNA.
3. Close the tube and incubate for 10 minutes at room temperature.
4. Briefly vortex the tube and then do a quick spin (less than 5000xg) to concentrate the liquid at the bottom.
5. Store the suspended plasmid at -20°C. The DNA is stable for at least one year from date of shipping when stored at -20°C.

RefSeq: [NM_001040429.3](#)

RefSeq Size: 8009 bp

RefSeq ORF: 3480 bp

Locus ID: 27253

UniProt ID: [O14917](#)

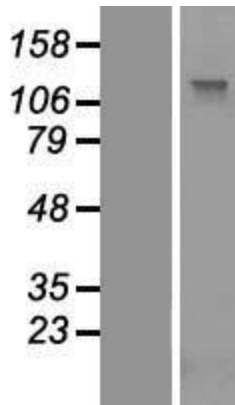
Cytogenetics: 13q21.1

Protein Families: Druggable Genome

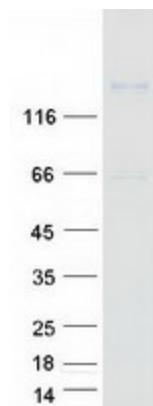
MW: 126.23 kDa

Gene Summary: This gene belongs to the protocadherin gene family, a subfamily of the cadherin superfamily. The encoded protein contains six extracellular cadherin domains, a transmembrane domain, and a cytoplasmic tail differing from those of the classical cadherins. The encoded protein may play a role in the establishment and function of specific cell-cell connections in the brain. [provided by RefSeq, Jul 2008]

Product images:



Western blot validation of overexpression lysate (Cat# [LY421750]) using anti-DDK antibody (Cat# [TA50011-100]). Left: Cell lysates from untransfected HEK293T cells; Right: Cell lysates from HEK293T cells transfected with RC206968 using transfection reagent MegaTran 2.0 (Cat# [TT210002]).



Coomassie blue staining of purified PCDH17 protein (Cat# [TP306968]). The protein was produced from HEK293T cells transfected with PCDH17 cDNA clone (Cat# RC206968) using MegaTran 2.0 (Cat# [TT210002]).