

## Product datasheet for RC206966

### SLC25A16 (NM\_152707) Human Tagged ORF Clone

#### Product data:

Product Type:	Expression Plasmids
Product Name:	SLC25A16 (NM_152707) Human Tagged ORF Clone
Tag:	Myc-DDK
Symbol:	SLC25A16
Synonyms:	D10S105E; GDA; GDC; HGT.1; hML7; ML7
Mammalian Cell Selection:	Neomycin
Vector:	pCMV6-Entry (PS100001)
E. coli Selection:	Kanamycin (25 ug/mL)
ORF Nucleotide Sequence:	>RC206966 ORF sequence Red=Cloning site Blue=ORF Green=Tags(s)

TTTTGTAATACGACTCACTATAGGGCGGCCGGAATTCGTCGACTGGATCCGGTACCGAGGAGATCTGCC  
GCC**CGCATCGCC**

ATGGCGGCGGCGACGGCCGCGGCAGCCCTGGCGGCGGCCGATCCCCCTCCCGCAATGCCGCAGGCGGCAG  
GGGCGGGAGGGCCACAACCCGAGAGACTTCTACTGGCTGCGCTCCTTTCTGGCCGGAGGTATTGCTGG  
ATGCTGTGCCAAAACAACAGTTGCTCCATTGGATCGAGTAAAGGTTTTATTACAAGCTCACAAATCACCAT  
TACAAGCATTTAGGAGTATTTCTGCATTGCGTGCTGTTCCCTCAAAAAGAAGGATTCCTTGGATTGTATA  
AAGGAAATGGTGCAATGATGATTGCAATCTTCCCTATGGTGCAATCCAGTTTATGGCATTGAGCATT  
TAAAACGTTAATTACTACGAAGCTGGGAATTTACGGTCATGTGCACAGATTAATGGCTGGATCCATGGCA  
GGTATGACAGCAGTTATCTGTACTTACCCTCTTGACATGGTTAGGGTCCGCCCTAGCATTCCAGGTGAAAG  
GGGAACACAGCTATACAGGAATTATTCATGCTTTCAAAACAATTTATGCAAAGGAAGGTGGTTTCTTTGG  
ATTTTACAGAGGTCTGATGCCTACTATTTAGGAATGGCTCCATATGCAGGTGTTTCATTTTTACTTTT  
GGTACCTTGAAGAGTGTGGGCTTTCCCATGCTCCTACCCTTCTTGGCAGACCTTCATCAGACAATCCTA  
ATGTCTTAGTTTTGAAAACCTCATGTAACCTACTTTGTGGTGGTGTGCTGGAGCAATAGCGCAGACAAT  
ATCCTACCCATTTGATGTGACTCGTCGGCGAATGCAATTAGGAACTGTTCTGCCGGAATTTGAAAAGTGC  
CTTACCATCGGGATACTATGAAGTATGTCTATGGACACCATGGAATTCGAAAAGGACTCTATCGTGGTT  
TATCTCTTAATTACATTGCTGTATTCCCTCTCAAGCAGTGGCTTTTACAACATACGAACCTATGAAGCA  
GTTTTTTCACCTCAAC

**ACGCGT**ACGCGGCCGCTCGAGCAGAACTCATCTCAGAAGAGGATCTGGCAGCAATGATATCCTGGATT  
ACAAGGATGACGACGATAAGGTTTAA



[View online »](#)

**Protein Sequence:** >RC206966 protein sequence  
 Red=Cloning site Green=Tags(s)

MAAATAAAALAAADPPPAMPQAAGAGGPTTRDFYWLRSFLAGGIAGCCAKTTVAPLDRVKVLQAHNHH  
 YKHLGVFSALRAVPQKEGFLGLYKGNAMMIRIFPYGAIQFMAFEHYKTLITTKLGISGHVHRLMAGSMA  
 GMTAVICTYPLDMVRVRLAFQVKGEHSYTGIIHAFKTIYAKEGGFFGFYRGLMPTILGMAPYAGVSFFTF  
 GTLKSIVGLSHAPTLGRPSSDNPVNLVLKTHVNLCCGGVAGAIQAQTIISYPFDVTRRRMQLTGTVLPEFEKC  
 LTMRDTMKYVYVGHGIRKGLYRGLSLNYIRCIPSQAVAFTTYELMKQFFHLN

TRTRPLEQKLISEEDLAANDILDYKDDDDKV

**Chromatograms:** [https://cdn.origene.com/chromatograms/mk6333\\_a01.zip](https://cdn.origene.com/chromatograms/mk6333_a01.zip)

**Restriction Sites:** SgfI-MluI

**Cloning Scheme:**

Cloning sites used for ORF Shuttling:



\* The last codon before the Stop codon of the ORF

**ACCN:** NM\_152707

**ORF Size:** 996 bp

**OTI Disclaimer:** The molecular sequence of this clone aligns with the gene accession number as a point of reference only. However, individual transcript sequences of the same gene can differ through naturally occurring variations (e.g. polymorphisms), each with its own valid existence. This clone is substantially in agreement with the reference, but a complete review of all prevailing variants is recommended prior to use. [More info](#)

**OTI Annotation:** This clone was engineered to express the complete ORF with an expression tag. Expression varies depending on the nature of the gene.

**Components:** The ORF clone is ion-exchange column purified and shipped in a 2D barcoded Matrix tube containing 10ug of transfection-ready, dried plasmid DNA (reconstitute with 100 ul of water).

**Reconstitution Method:**

1. Centrifuge at 5,000xg for 5min.
2. Carefully open the tube and add 100ul of sterile water to dissolve the DNA.
3. Close the tube and incubate for 10 minutes at room temperature.
4. Briefly vortex the tube and then do a quick spin (less than 5000xg) to concentrate the liquid at the bottom.
5. Store the suspended plasmid at -20°C. The DNA is stable for at least one year from date of shipping when stored at -20°C.

**RefSeq:** [NM\\_152707.4](#)

**RefSeq Size:** 2264 bp

**RefSeq ORF:** 999 bp

**Locus ID:** 8034

**UniProt ID:** [P16260](#)

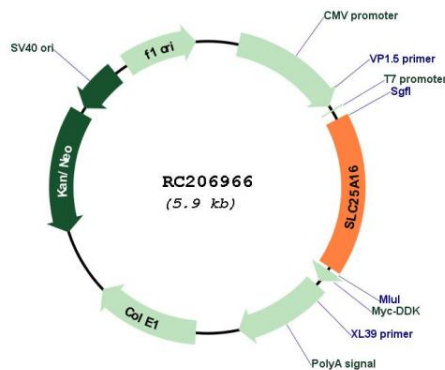
**Cytogenetics:** 10q21.3

**Protein Families:** Druggable Genome

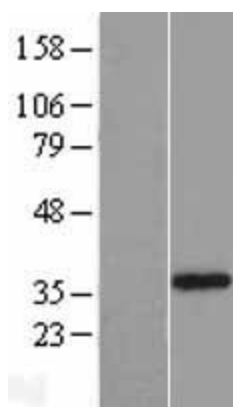
**MW:** 36.2 kDa

**Gene Summary:** This gene encodes a protein that contains three tandemly repeated mitochondrial carrier protein domains. The encoded protein is localized in the inner membrane and facilitates the rapid transport and exchange of molecules between the cytosol and the mitochondrial matrix space. This gene has a possible role in Graves' disease. [provided by RefSeq, Jul 2008]

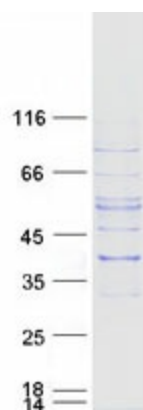
### Product images:



Circular map for RC206966



Western blot validation of overexpression lysate (Cat# [LY407350]) using anti-DDK antibody (Cat# [TA50011-100]). Left: Cell lysates from untransfected HEK293T cells; Right: Cell lysates from HEK293T cells transfected with RC206966 using transfection reagent MegaTran 2.0 (Cat# [TT210002]).



Coomassie blue staining of purified SLC25A16 protein (Cat# [TP306966]). The protein was produced from HEK293T cells transfected with SLC25A16 cDNA clone (Cat# RC206966) using MegaTran 2.0 (Cat# [TT210002]).