

Product datasheet for **RC206964**

ALS2CR4 (TMEM237) (NM_152388) Human Tagged ORF Clone

Product data:

Product Type:	Expression Plasmids
Product Name:	ALS2CR4 (TMEM237) (NM_152388) Human Tagged ORF Clone
Tag:	Myc-DDK
Symbol:	ALS2CR4
Synonyms:	ALS2CR4; JBTS14
Mammalian Cell Selection:	Neomycin
Vector:	pCMV6-Entry (PS100001)
E. coli Selection:	Kanamycin (25 ug/mL)
ORF Nucleotide Sequence:	>RC206964 ORF sequence Red=Cloning site Blue=ORF Green=Tags(s)

TTTTGTAATACGACTCACTATAGGGCGGCCGGAATTCGTCGACTGGATCCGGTACCGAGGAGATCTGCC
GCC**CGATCGCC**

ATGGGGAAGAATCCTGTGCGTCTCCACGAGCTATTCCACCTGTGCCAAGTCAAGATGATATTCCACTTA
GTCGTCTAAGAAAAAGAAGCCAGAACAAAAACACACCAGCAAGTGCTTCTTTGGAAGCCTTGCTCA
GACTGCTGGTGAAGGCCCTCTGAGGGCAATGAGCCATCAACTAAAGAACTCAAAGAGCACCCAGAGGCT
CCTGTTCAAAGAAGACAGAAAAAGACAAGGCTACCTCTTGAATTGGAGACTTCTCCACCCAAAAGAAGT
CATCTAGTTCATCTTTATTACGAAATGAAAATGGTATTGATGCGGAGCAAGCTGAGGAGGCAGTTATTCA
AAAACCTCGGAGGAAGACAAAGAAAACCCAGCCAGCAGAATTACAGTATGCCAATGAGCTAGGAGTAGAA
GATGAAGACATAATCACTGATGAGCAAACTACTGTGGAACAGCAGTCTGTATTCACTGCACCCACTGGCA
TTAGCCAGCCTGTAGGCAAAGTATTTGTGGAAAAAGCCGGAGATTCCAGGCTGCTGATCGTTTCAGAGTT
GATAAAGACCACAGAAAACATAGATGTGTCAATGGACGTGAAGCCTTCTGGACCACCATAGATGTGGCA
CTTACAGTGACCCGGGCTTTCAGGATGATTGGTCTCTTTTCTCATGGATTCTTGGCTGGCTGTGCTGTGT
GGAATATTGTTGTGATATATGTTCTAGCAGGAGATCAGCTATCCAACCTCTCAAACATTCGCAACAATA
CAAGACCCTAGCGTATCCATTCCAGAGTCTTCTGACTTGCTTTTGGCCTGGATCCTACAGCTTTAG
GACAGGATTGACTTTGCTAAAATATCAGTAGCAATCCGAAATTTTTGGCCTGGATCCTACAGCTTTAG
CATCTTTCTGTACTTTACTGCTCTTATACTATCTCTGAGTCAGCAAATGACAAGTGACAGAATCCACCT
TTACACACCTTCTCTGTTAATGGTAGCCTCTGGGAAGCAGGAATTGAGGAACAGATTCTCCAGCCATGG
ATTGTGGTGAATCTCGTGGTGGCTCTTCTGGTTGGATTATCTTGGCTATTTTTGTCTTATAGGCCAGGCA
TGGATCTTAGTGAAGAGTTAATGTTCTCTCAGAGGTGGAAGAATATCCTGATAAAGAGAAAAGAAATCAA
AGCCTCTTCA

ACGCGTACGCGGCCGCTCGAGCAGAAACTCATCTCAGAAGAGGATCTGGCAGCAAATGATATCCTGGATT
ACAAGGATGACGACGATAAGGTTTAA



[View online »](#)

Protein Sequence: >RC206964 protein sequence
Red=Cloning site Green=Tags(s)

MGKNPVRPPRAIPPVPSQDDIPLSRPKKKKPRTKNTPASASLEGLAQTAGRRPSEGNEPSTKELKEHPEA
 PVQRRQKKTRLPLELETSSTQKKSSSSLLRNENGIDAEQAEAAVIQKPRRKTQPAELQYANELGVE
 DEDIITDEQTTVEQQSVFTAPTGISQPVGKVFVEKSRRFQAADRSELIKTTENIDVSM DVKPSWTTIDVA
 LTVHRAFRMIGLFSHGFLAGCAVWNIIVVIYVLAGDQLSNLSNILQQYKTLAYPFQSLLYLLLALSTISAF
 DRIDFAKISVAIRNFLALDPTALASFLYFTALILSLSQQMTSDRIHLYTPSSVNGSLWEAGIEEQILQPW
 IYVNLVVALLVGLSWLFLSYRPGMDLSEELMFSSEVEEYPDKKEKEIKASS

TRTRPLEQKLISEEDLAANDILDYKDDDDKV

Chromatograms: https://cdn.origene.com/chromatograms/mk6321_h10.zip

Restriction Sites: SgfI-MluI

Cloning Scheme:



* The last codon before the Stop codon of the ORF

ACCN: NM_152388

ORF Size: 1200 bp

OTI Disclaimer: The molecular sequence of this clone aligns with the gene accession number as a point of reference only. However, individual transcript sequences of the same gene can differ through naturally occurring variations (e.g. polymorphisms), each with its own valid existence. This clone is substantially in agreement with the reference, but a complete review of all prevailing variants is recommended prior to use. [More info](#)

OTI Annotation: This clone was engineered to express the complete ORF with an expression tag. Expression varies depending on the nature of the gene.

Components: The ORF clone is ion-exchange column purified and shipped in a 2D barcoded Matrix tube containing 10ug of transfection-ready, dried plasmid DNA (reconstitute with 100 ul of water).

Reconstitution Method:

1. Centrifuge at 5,000xg for 5min.
2. Carefully open the tube and add 100ul of sterile water to dissolve the DNA.
3. Close the tube and incubate for 10 minutes at room temperature.
4. Briefly vortex the tube and then do a quick spin (less than 5000xg) to concentrate the liquid at the bottom.
5. Store the suspended plasmid at -20°C. The DNA is stable for at least one year from date of shipping when stored at -20°C.

RefSeq: [NM_152388.4](#)

RefSeq Size: 5592 bp

RefSeq ORF: 1203 bp

Locus ID: 65062

UniProt ID: [Q96Q45](#)

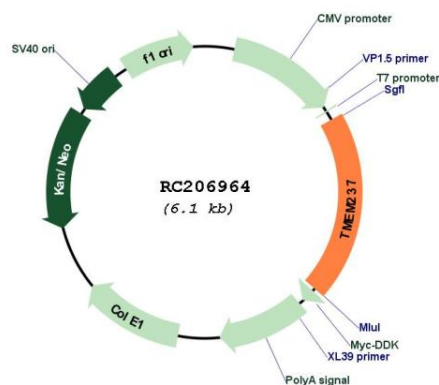
Cytogenetics: 2q33.1

Protein Families: Transmembrane

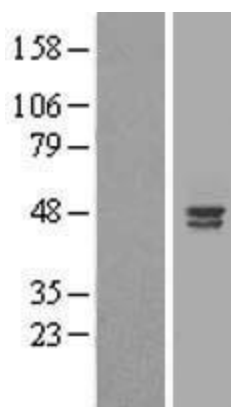
MW: 44.6 kDa

Gene Summary: The protein encoded by this gene is a tetraspanin protein that is thought to be involved in WNT signaling. Defects in this gene are a cause of Joubert syndrome-14. Two transcript variants encoding different isoforms have been found for this gene. [provided by RefSeq, Jan 2012]

Product images:



Circular map for RC206964



Western blot validation of overexpression lysate (Cat# [LY407556]) using anti-DDK antibody (Cat# [TA50011-100]). Left: Cell lysates from untransfected HEK293T cells; Right: Cell lysates from HEK293T cells transfected with RC206964 using transfection reagent MegaTran 2.0 (Cat# [TT210002]).