

Product datasheet for RC206963

HDGFL3 (NM_016073) Human Tagged ORF Clone

Product data:

Product Type: Expression Plasmids
Product Name: HDGFL3 (NM_016073) Human Tagged ORF Clone
Tag: Myc-DDK
Symbol: HDGFL3
Synonyms: CGI-142; HDGF-2; HDGF2; HDGFRP3; HRP-3
Mammalian Cell Selection: Neomycin
Vector: pCMV6-Entry (PS100001)
E. coli Selection: Kanamycin (25 ug/mL)
ORF Nucleotide Sequence: >RC206963 representing NM_016073
 Red=Cloning site Blue=ORF Green=Tags(s)

TTTTGTAATACGACTCACTATAGGGCGCCGGGAATTCGTCGACTGGATCCGGTACCGAGGAGATCTGCC
 GCCCGCATCGCC

ATGGCGCGTCCGCGGCCACGCGAGTACAAAGCGGGCGACCTGGTCTTCGCCAAGATGAAGGGCTACCCGC
 ACTGGCCGGCCCGGATTGATGAAGTCCCAGAGGGCGCTGTGAAGCCTCCAGCAAACAAGTATCCTATCTT
 CTTTTTTGGCACCCATGAACTGCATTTCTAGGTCCCAAAGACCTTTTTCCATATAAGGAGTACAAAGAC
 AAGTTTGGAAAGTCAAACAACGGAAAGGATTTAACGAAGGATTGTGGAAATAGAAAATAACCCAGGAG
 TAAAGTTTACTGGCTACCAGGCAATTCAGCAACAGAGCTCTTCAGAACTGAGGGAGAAGGTGGAATAC
 TGCAGATGCAAGCAGTGAGGAAGAAGGTGATAGAGTAGAAGAAGATGGAAAAGGCAAAAGAAAGAATGAA
 AAAGCAGGCTCAAACGGAAAAAGTCATATACTTCAAAGAAATCCTCTAAACAGTCCCGGAAATCTCCAG
 GAGATGAAGATGACAAAGACTGCAAAGAAGAGGAAAAACAAAAGCAGCTCTGAGGGTGGAGATGCGGGCAA
 CGACACAAGAAACACAACCTTCAGACTTGCAGAAAACAGTGAAGGGACC

ACGCGTACGCGGCCGCTCGAGCAGAACTCATCTCAGAAGAGGATCTGGCAGCAATGATATCCTGGATT
 ACAAGGATGACGACGATAAGGTTTAA

Protein Sequence: >RC206963 representing NM_016073
 Red=Cloning site Green=Tags(s)

MARPRPREYKAGDLVFAKMKGYPHWPARIDELPEGAVKPPANKYPIFFFTHETAFLGPKDLFPYKEYKD
 KFGKSNKRKGFNEGLWEIENNPVKFTGYQAIQQSSSETEGEGGNTADASSEEGDRVEEDGKGRKNE
 KAGSKRKKSYTSKSKQSRKSPGDEDDKDCKEEENKSSSEGGDAGNDTRNTTSDLQKTSEGT

TRTRPLEQKLISEEDLAANDILDYKDDDDKV



[View online »](#)

Chromatograms: https://cdn.origene.com/chromatograms/mk6002_d07.zip

Restriction Sites: SgfI-MluI

Cloning Scheme:



ACCN: NM_016073

ORF Size: 609 bp

OTI Disclaimer: The molecular sequence of this clone aligns with the gene accession number as a point of reference only. However, individual transcript sequences of the same gene can differ through naturally occurring variations (e.g. polymorphisms), each with its own valid existence. This clone is substantially in agreement with the reference, but a complete review of all prevailing variants is recommended prior to use. [More info](#)

OTI Annotation: This clone was engineered to express the complete ORF with an expression tag. Expression varies depending on the nature of the gene.

Components: The ORF clone is ion-exchange column purified and shipped in a 2D barcoded Matrix tube containing 10ug of transfection-ready, dried plasmid DNA (reconstitute with 100 ul of water).

Reconstitution Method:

1. Centrifuge at 5,000xg for 5min.
2. Carefully open the tube and add 100ul of sterile water to dissolve the DNA.
3. Close the tube and incubate for 10 minutes at room temperature.
4. Briefly vortex the tube and then do a quick spin (less than 5000xg) to concentrate the liquid at the bottom.
5. Store the suspended plasmid at -20°C. The DNA is stable for at least one year from date of shipping when stored at -20°C.

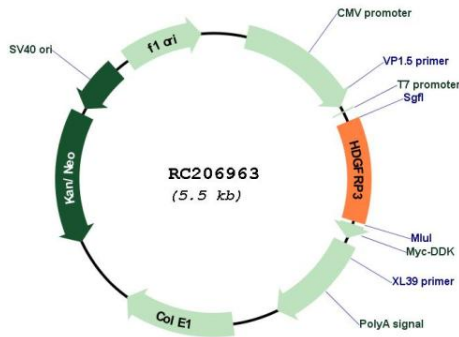
RefSeq: [NM_016073.4](#)

RefSeq Size: 1973 bp

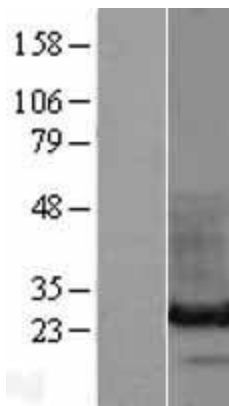
RefSeq ORF: 612 bp

Locus ID: 50810

UniProt ID: [Q9Y3E1](#)
Cytogenetics: 15q25.2
Domains: PWWP
MW: 22.4 kDa
Gene Summary: Enhances DNA synthesis and may play a role in cell proliferation.[UniProtKB/Swiss-Prot Function]

Product images:


Circular map for RC206963



Western blot validation of overexpression lysate (Cat# [LY402497]) using anti-DDK antibody (Cat# [TA50011-100]). Left: Cell lysates from untransfected HEK293T cells; Right: Cell lysates from HEK293T cells transfected with RC206963 using transfection reagent MegaTran 2.0 (Cat# [TT210002]).