

Product datasheet for **RC206960**

MBLAC1 (NM_203397) Human Tagged ORF Clone

Product data:

Product Type:	Expression Plasmids
Product Name:	MBLAC1 (NM_203397) Human Tagged ORF Clone
Tag:	Myc-DDK
Symbol:	MBLAC1
Mammalian Cell Selection:	Neomycin
Vector:	pCMV6-Entry (PS100001)
E. coli Selection:	Kanamycin (25 ug/mL)
ORF Nucleotide Sequence:	>RC206960 ORF sequence Red=Cloning site Blue=ORF Green=Tags(s)

TTTTGTAATACGACTCACTATAGGGCGGCCGGAATTCGTCGACTGGATCCGGTACCGAGGAGATCTGCC
GCC**CGATCGCC**

ATGCGGACCGAGCCGCTGTGCGGGGCATCCCCTCTGCTGGTGCCCGGCGACCCCTACTCTGTGGTGGTTC
TGCTGCAGGGCTACGCGGAGCCAGAGGGTGTGGGCGATGCCGTGCGCGCCGACGGCTCCGTGACCCTGGT
CCTACCCAGACCCGGGGCCCGCCTCCAGCCACCGAGAGTCCCCGCGCGGGAGTGGCGGCAGAGGCC
GCCCTGGAGGAGCGGCCCGTGGCCACATCCTGGTGGACACCGGGGGCCCTGGGCTCGGGAGCGCTGC
TGGGGCGCTGGCGGGGACGGGCGTGGCCCCGGGAGACGTGACGCTAGTGGTGGGACCAACGGGCACTC
GGATCACATCGGGAACCTGGGGCTGTCCAGGCGGGCTCTGCTGGTCTCGCACGACTTCTGCCTTCCC
GGAGGCCGCTACCTGCCCCACGGGCTGGGTGAGGGGACGCCCCTGCGCCTGGGCCCGGGGCTCGAGGTGT
GGGCCACGCCGGGCCACGGGGCCAGCGCGACGTGAGCGTGGTGGTGGCCGGCACGGCTCTGGCACCGT
GGTGGCGGGAGATGTGTTTGAAGGAGATGGGGACGAGGATTCTGGCAGGCACTGAGTGAAGACCCCGCA
GCCAGGAGCGGAGCCGGAAGAGGGTCTGGTCTTCCGACGTGGTCTGACCTGGTACCGGGCCCCCT
TTCGAGTGTTAAGGAAGCCTCGACGCCAAGACGGAGGGTGGAGGGAACAGCCAGCAGGAGCCGGTGGT
CGGAGACGAGGAGCCCGCCCTGCAC

ACGCGTACGCGGCCGCTCGAGCAGAAACTCATCTCAGAAGAGGATCTGGCAGCAAATGATATCCTGGATT
ACAAGGATGACGACGATAAGGTTTAA



[View online »](#)

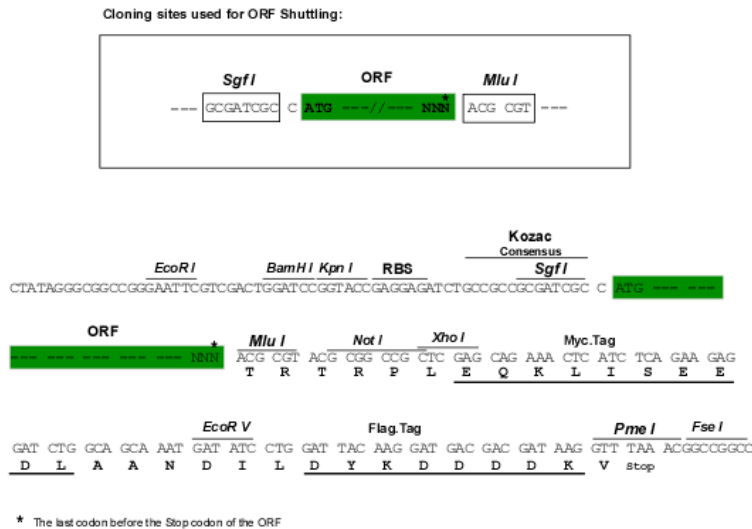
Protein Sequence: >RC206960 protein sequence
Red=Cloning site Green=Tags(s)

MRTEPLCGASPLLVPDPYSVVLLQGYAEPEGVGDVAVRADGSVTLVLPQTRGPASSHRESPRGSGGAEA
 ALEEAARGHILVDTGGPWAREALLGALAGQGVAPGDVTLVVGTINGHSDHIGNLGLFPGAALLVSHDFCLP
 GGRYLPHGLGEGQPLRLGPLEVWATPGHGGQRDVSVVVAGTALGTVVAGDVFERDGEDSWQAL SEDPA
 AQERSRKRVLVADVVPVGHGPPFRVLREASQPKTEGGNSQEPVVGDEEPA

TRTRPLEQKLISEEDLAANDILDYKDDDDKV

Restriction Sites: SgfI-MluI

Cloning Scheme:



ACCN: NM_203397

ORF Size: 1485 bp

OTI Disclaimer: The molecular sequence of this clone aligns with the gene accession number as a point of reference only. However, individual transcript sequences of the same gene can differ through naturally occurring variations (e.g. polymorphisms), each with its own valid existence. This clone is substantially in agreement with the reference, but a complete review of all prevailing variants is recommended prior to use. [More info](#)

OTI Annotation: This clone was engineered to express the complete ORF with an expression tag. Expression varies depending on the nature of the gene.

Components: The ORF clone is ion-exchange column purified and shipped in a 2D barcoded Matrix tube containing 10ug of transfection-ready, dried plasmid DNA (reconstitute with 100 ul of water).

- Reconstitution Method:**
1. Centrifuge at 5,000xg for 5min.
 2. Carefully open the tube and add 100ul of sterile water to dissolve the DNA.
 3. Close the tube and incubate for 10 minutes at room temperature.
 4. Briefly vortex the tube and then do a quick spin (less than 5000xg) to concentrate the liquid at the bottom.
 5. Store the suspended plasmid at -20°C. The DNA is stable for at least one year from date of shipping when stored at -20°C.

RefSeq: [NM_203397.3](#)

RefSeq Size: 1518 bp

RefSeq ORF: 801 bp

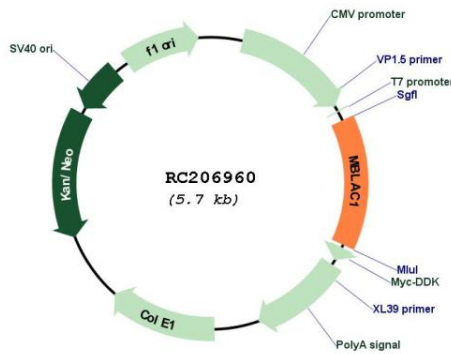
Locus ID: 255374

UniProt ID: [A4D2B0](#)

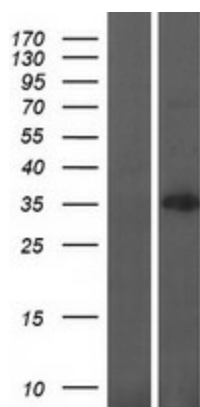
Cytogenetics: 7q22.1

MW: 27.1 kDa

Product images:



Circular map for RC206960



Western blot validation of overexpression lysate (Cat# [LY404337]) using anti-DDK antibody (Cat# [TA50011-100]). Left: Cell lysates from untransfected HEK293T cells; Right: Cell lysates from HEK293T cells transfected with RC206960 using transfection reagent MegaTran 2.0 (Cat# [TT210002]).