

Product datasheet for **RC206958**

L3MBTL4 (NM_173464) Human Tagged ORF Clone

Product data:

Product Type:	Expression Plasmids
Product Name:	L3MBTL4 (NM_173464) Human Tagged ORF Clone
Tag:	Myc-DDK
Symbol:	L3MBTL4
Synonyms:	HsT1031
Mammalian Cell Selection:	Neomycin
Vector:	pCMV6-Entry (PS100001)
E. coli Selection:	Kanamycin (25 ug/mL)



[View online »](#)

ORF Nucleotide Sequence:

>RC206958 representing NM_173464
 Red=Cloning site Blue=ORF Green=Tags(s)

TTTTGTAATACGACTCACTATAGGGCGGCCGGAATTCGTCGACTGGATCCGGTACCGAGGAGATCTGCC
 GCC**CGCATCGCC**

ATGAAACAGCCAAACAGGAAAAGGAAGCTTAATATGGATTCCAAAGAGCGTTTGGATCAGGACGGACGCT
 TGGAGCAAGCTGAAGAGGAAAAGAAGCCCAAGGATAGCACAAACCCCTTTGAGTCACGTCCCTTCAGCGGC
 TGCACAGGGAGCATGGTCTTGGGAGTGGTACTTGAAAGAACAGAAGGCTGTCGCAGCACCTGTTGAGCTG
 TTTTCCAAGGATCAGTCTTTCCAGAGCATGAAAATGGTTTTTCAGATTGGAATGAGATTAGAAGGCATTG
 ATCCCCGACATCCATCGGTATTCTGTGTGCTTTCTGTAGCGGAGGTTTGTGGTTACCGTCTAAGACTTCA
 TTTTGATGGTTATTTAAGTTGCTATGATTTTTGGACCAATGCTGGTCCCTGACATTATCCAGTAGGA
 TGGTGTGAAAAGACCAACATGAACTGCACATCCCTAAGGTTATAGAAAAGATAAATTTGTTGGATGG
 ATTACTGAAGGCCTGCAAAATGCAAAATGCTCCAAGAAATTTATCAGAAACAGAAGTCTAATGGGCC
 AATGTCTAAAGAAATTTAGGTTGGAATGAAGCTGGAGGCCGTGGACAGGAAGAACCCTTCTTGGTGTGT
 GTGGCGCCATAGCAGATATTGTTGAAGATCGCTTACTAGTGCATTTTGCAACTGGGATGATAGTTACG
 ATTACTGGTGCATGTTAATAGCCCTTATGTCCAGCCAGTTGGTGGTGTGAGGAGAATGGAAGAACTCT
 GATAGCACCCCAAGGTTATCCCAATCCAGAAAATTTTCTGGACAGAATACCTGGAAGCTACTCAAACC
 AATGCAGTTCTGCCAAAGTTTTTAAAAAGAGTTGCCTCATGGTTTTCTGCCAAATATGAAACTTGAAG
 TTGTGGATAAACGGAACCCAGGTTAATTCGTGTTGCTACGATTGTAGATGTTGATGACCAAAGAGTAAA
 GGTTCATTTTGATGGTTGGGACCATAAGTATGACTACTGGGTGGAGGCAGACAGCCCTGATATCCACCCG
 ATCGGATGGTGTGATGTACAGGGCATCCACTGGAAGTCCACAGCGAACGAATGACCTGAAGATCCTTC
 CAGGTCGAAGTGTCTGTCTACTCCCAGGTTGCCGAGGAATAGGCCATATCCGTGGTCCACGTTATTCGGG
 ACATCACAGTGTCTTTGGCTGCCCGTATTCAGACATGAACTTGAAAAGGAGGCAACACTTCACGATCGT
 TTGAGAGAACAAACACAGGCAAATTTGGAATCAGACTTTCACATTCAAAATCAAAAAGCCTCTGTAGTT
 TGAACTTCAATGGAAAACATGAAAAGGTGAACAGTCAAGCCAGACTTGTACAGCAGGCAAAGTGTGAA
 AATCAAAGGAAAAGAAGATATTGACTTGGATAATCTTTCAGAGTGTGTTGCTGCATCCAGAGGTTTG
 GAATACTCGTGGAGCAGGCGCAGCAGGTGCTTACCAGTCAAGTGTCCATGTCCACGGTGTGAGCCACC
 CTTTTCGGGACCTTCCCCTCGGCAGGGAGCAACTGCAAGTTGCTTCCAGGCGTGGCTGACATCCGGGC
 CAGCCAAGTGGCAGTGGACTGTGGATGAGGTGGCTGAGTTGTACAGTCTTCTGGGCTGTGAAGAG
 CATGCCAAGTGTCTTAAGAAAGAGCAGATCGATGGCAAAGCCTTCTGCTTCTGACACAGACGGACATTG
 TCAAAGTGATGAAGATCAAAGTGGGCCAGCACTGAAGATTTACAACCTATCCTGATGTTCAAGGCATTC
 CCAGGAAGTCCCTGAAGAAGATATTGCCTCAGGCCAAGAAGTCAAGGGGA

ACGCGTACGCGGCCGCTCGAGCAGAAACTCATCTCAGAAGAGGATCTGGCAGCAAATGATATCCTGGATT
 ACAAGGATGACGACGATAAGGTTTAA

Protein Sequence:

>RC206958 representing NM_173464
 Red=Cloning site Green=Tags(s)

MKQPNRKRKLNMDSKERLDQDGRLEQAEKPKDSTTPLSHVPSAAAQGAWSWEWYLKEQKAVAAPVEL
 FSKDQSFPEHENGFIQMRLEIDPRHPSVFCVLSVAEVCYRLRLHFDGYLSCYDFWTNAGSPDIHPVG
 WCEKTKHELHPIKGYRKDKFVWMDYLLKACKLQNAKPKLFRNRSPNGPMSKEFQVGMKLEAVDRKNPSLVC
 VATIADIVEDRLLVHFDNWDDSYDYWCDVNSPYVQVPGWCQENGRTLIAPQGYNPENFSWTEYLEATQT
 NAVPAKVFKMRLPHGFLPNMKLEVVDKRNPRLIRVATIVDVEDDQVRKVFHFDGWDHKYDYWVEADSPDIHP
 IGWCDVTHPLEVPQRTNDLKILPGQAVCPPTGCRGIGHIRGPRYSGHHSFAGCPYSDMNLKKEATLHDR
 LREQTQANLESDSSHSKSLCSLNFNGKHEKVNSQPRLVQQAACKLIKKEIDLDNLFRVLVHPRGL
 EYSVEQAQQVLHQSVSMSTVSAHPFRDLPLGREQHCKLLPGVADIRASQVARWTVDEVAEFVQSLLGCEE
 HAKCFKKEQIDGKAFLLLTQTDIVKVMKIKLGPALKIYNSILMFRHSQELPEEDIASGQEVRG

TRTRPLEQKLISEEDLAANDILDYKDDDDKV

Chromatograms: https://cdn.origene.com/chromatograms/mk8102_e01.zip

Restriction Sites: SgfI-MluI

Cloning Scheme:



ACCN: NM_173464

ORF Size: 1869 bp

OTI Disclaimer: Due to the inherent nature of this plasmid, standard methods to replicate additional amounts of DNA in E. coli are highly likely to result in mutations and/or rearrangements. Therefore, OriGene does not guarantee the capability to replicate this plasmid DNA. Additional amounts of DNA can be purchased from OriGene with batch-specific, full-sequence verification at a reduced cost. Please contact our customer care team at custsupport@origene.com or by calling 301.340.3188 option 3 for pricing and delivery.

The molecular sequence of this clone aligns with the gene accession number as a point of reference only. However, individual transcript sequences of the same gene can differ through naturally occurring variations (e.g. polymorphisms), each with its own valid existence. This clone is substantially in agreement with the reference, but a complete review of all prevailing variants is recommended prior to use. [More info](#)

OTI Annotation: This clone was engineered to express the complete ORF with an expression tag. Expression varies depending on the nature of the gene.

Components: The ORF clone is ion-exchange column purified and shipped in a 2D barcoded Matrix tube containing 10ug of transfection-ready, dried plasmid DNA (reconstitute with 100 ul of water).

Reconstitution Method:

1. Centrifuge at 5,000xg for 5min.
2. Carefully open the tube and add 100ul of sterile water to dissolve the DNA.
3. Close the tube and incubate for 10 minutes at room temperature.
4. Briefly vortex the tube and then do a quick spin (less than 5000xg) to concentrate the liquid at the bottom.
5. Store the suspended plasmid at -20°C. The DNA is stable for at least one year from date of shipping when stored at -20°C.

RefSeq: [NM_173464.3](#), [NP_775735.2](#)

RefSeq Size: 3604 bp

RefSeq ORF: 1872 bp

Locus ID: 91133

UniProt ID: [Q8NA19](#)

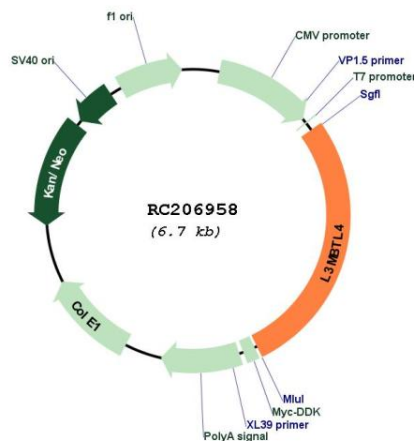
Cytogenetics: 18p11.31

Protein Families: Transcription Factors

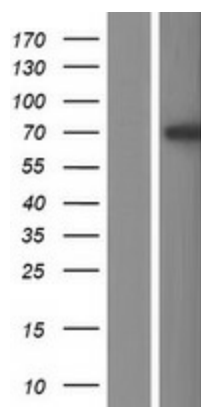
MW: 71.1 kDa

Gene Summary: Putative Polycomb group (PcG) protein. PcG proteins maintain the transcriptionally repressive state of genes, probably via a modification of chromatin, rendering it heritably changed in its expressibility (By similarity).[UniProtKB/Swiss-Prot Function]

Product images:



Circular map for RC206958



Western blot validation of overexpression lysate (Cat# [LY406618]) using anti-DDK antibody (Cat# [TA50011-100]). Left: Cell lysates from untransfected HEK293T cells; Right: Cell lysates from HEK293T cells transfected with RC206958 using transfection reagent MegaTran 2.0 (Cat# [TT210002]).