

## Product datasheet for **RC206951**

### ARMC3 (NM\_173081) Human Tagged ORF Clone

#### Product data:

Product Type:	Expression Plasmids
Product Name:	ARMC3 (NM_173081) Human Tagged ORF Clone
Tag:	Myc-DDK
Symbol:	ARMC3
Synonyms:	CT81; KU-CT-1
Mammalian Cell Selection:	Neomycin
Vector:	pCMV6-Entry (PS100001)
E. coli Selection:	Kanamycin (25 ug/mL)



[View online »](#)

**ORF Nucleotide Sequence:**

>RC206951 ORF sequence  
 Red=Cloning site Blue=ORF Green=Tags(s)

TTTTGTAATACGACTCACTATAGGGCGGCCGGAATTCGTCGACTGGATCCGGTACCGAGGAGATCTGCC  
 GCC**CGCATCGCC**

ATGGGTAAAAAGATAAAGAAGGAAGTAGAGCCTCCTCCTAAGGATGTGTTTGACCCATTAATGATTGAAA  
 GCAAAAAAGCAGCAACTGTGGTGTAAATGCTTAATTCTCCAGAAGAGGAAATTTGGCTAAAGCATGTGA  
 AGCCATTTATAAATTTGCTTTAAAAGGTGAGGAAAATAAAAACAACCCCTCCTTGAACCTGGAGCTGTGGAA  
 CCTTTAACTAAGCTACTCACCCATGAAGACAAAATTGTAAGAAGAAATGCTACTATGATATTTGGAATCC  
 TGGCTTCTAATAATGATGTTAAAAAATTGTTAAGGGAGTTAGATGTGATGAATTCGTGATTGCCAGCT  
 CGCTCCAGAAGAAGAAGTAGTTATCCATGAGTTTGCTAGTCTTTGTCTAGCAAACATGTCTGCAGAGTAC  
 ACCAGTAAAGTGCAAATATTTGAACATGGGGGATTAGAGCCACTCATCAGACTACTGAGTAGCCCTGACC  
 CGGATGTAAGAAGAAGCTCTATGGAATGCATTTACAACCTGGTGCAGGATTTTCAGTGTGAGCTAAACT  
 TCAAGAAGTAAATGCAATACCTCCTATCTTAGATCTCTTGAAGTCAGAATATCCAGTGATTGAGTTGTTG  
 GCTCTCAAAACCTTAGGTGTTATTGCAAATGATAAGGAGTCTCGAACAATGCTAAGAGACAATCAAGGAT  
 TGGACCATCTTATTAAGATCCTAGAAAATAAGGAATTGAATGACCTTCATATAGAAGCACTTGCAGTGAT  
 AGCCAATTGCCTTGAAGACATGGATACTATGGTGCAGATTGAGCAGACAGGGGCTTAAAAAGCTCCTG  
 TCATTTGCAGAAAACCTACAATTCCTGATATTCAGAAGAATGCAGCAAAAGCCATTACTAAAGCAGCTT  
 ATGATCCTGAAAAAGAAAACCTTTTTCATGAACAAGAGGTTGAAAAGTGCCTTGTAGCCCTTTGGGTTT  
 TGAAAAATGATGGAAGTAAATTTGCTGCTCCCAAGCTATTTGAGCAATGTGTGAGAATTCAGGCAGCAAA  
 GATTTTTTCAATAATCAGGGGATCCACAGTTAATTCAGTTGCTAAAAAGTGACAATGAAGAGGTACGGG  
 AAGCAGCAGCTCTAGCCCTGGCAAACTAACCACTTGCAACCCTGCTAATGCAAAACGCTGCTGCTGCTACA  
 TGATGGTATTGATCCATTAATAAACCTCCTGTCTAGTAAACGAGATGGAGCCATTGCCAACGCTGCTACA  
 GTATTAACAAACATGGCCATGCAGGAGCCCTGCGCCTGAACATACAGAATCACGACATCATGCATGCCA  
 TCATCAGCCCACTGCGTTCTGCAAAACACAGTCGTGCAGAGCAAAGCTGCTCTCGTGTACCGCCAACTGC  
 GTGTGACGTTGAAGCCCGGACTGAGTTAAGAAATCTGGTGGATTGGAGCCCTGGTAGAGCTGCTACGC  
 TCCAAGAATGATGAAGTGAAGGACGAGCCAGTTGGGCAGTGATGGTCTGTGCTGGTGCAGAGCTGACGG  
 CCAATGAATTATGAGGCTCGGGGCTTTAGATATCCTTGAAGAAGTTAACGTATCAGGAAGTCCGAAAAA  
 TAAATTCAGTGAGGCAGCTTATAATAAGTTGCTCAATAACAATCTTCCCTGAAATACAGCCAGACTGGC  
 TATTTGTCATCAAGTAACATAATTAACGATGGATTCTATGATTATGGTCGGATAAATCCCGCACCAAAAC  
 TGTTGCCTTTGAAGGAGCTCTGCTTACAAGAACCAAGTGACCTACGGGCTGACTCTTAATCAACAGTAA  
 ATCTTACGTTTCTCCACCTTCATCTATGGAAGATAAATCAGATGTTGGTTATGGACAAAAGTATTTCTTCT  
 TCATCTTCCTTAAGAAGATCAAGTAAAGAAAAGAACAAAAAAATAGTTATCATTTTAGTGCTGGATTTG  
 GATCTCCCATAGAAGACAAATCAGAGCCAGCTTCTGGACGAAATACTGTTCTCAGCAAAAGCGCCACCAA  
 AGAAAAAGGATGGAGGAAAAGCAAGGAAAAAAGAAGAGGAAAAAGTGAAGAGGAGGAAGAGGTTATG  
 GTGGTACCAAAATTTGTTGGTGAAGGAAGCTCTGACAAAGAATGGTGTCTCCTCCTGACCTGATTTCT  
 CTATGTATGTGTATGAGGTGACCAATCAATACTGCCAATAACCAATATTAAGGAACAGATTGAGGATCT  
 GGCAAAAGTATGTAGCAGAAAAAATGGGTGGTAAGATTCCAAAAGAGAAAACCTACCTGATTTACAGTGGGAA  
 CTTACACATAAGTGAAGTAAATTTCAACTTAAATCCAATGTTATACCGATTGGACATGTCAAAAAAGGAA  
 TCTTCTACCATCGAGCTTTGCTTTTCAAGGCTCTGGCTGATAGAATTGGCATTGGTTGCTCCCTAGTTTCG  
 CGGAGAGTACGGTAGAGCGTGAATGAAGTCATGCTGCAGAATGACTCTCGGAAGGGAGTGATTGGGGGC  
 CTCCCCGCTCCTGAGATGTACGTGATTGACCTCATGTTCCATCCAGGTGGACTGATGAAGTTGAGAAGTC  
 GAGAGGCTGATCTTTACAGATTCATT

**ACGCGT**ACGCGGCCGCTCGAGCAGAACTCATCTCAGAAGAGGATCTGGCAGCAATGATATCCTGGATT  
 ACAAGGATGACGACGATAAGGTTTAA

**Protein Sequence:** >RC206951 protein sequence  
 Red=Cloning site Green=Tags(s)

```

MGKKIKKEVEPPPDKVDFDPLMIESKKAATVVLMLNSPEEEILAKACEAIYKFKLKEENKTTLLELGAVE
PLTKLLTHEDIYRRNATMIFGILASNNDVKLLRELDVMNSVIAQLAPEEEVVIHEFASLCLANMSAAY
TSKVQIFEHGGLLEPLIRLLSSPDPDVKKNSMECIYNLVQDFQCRAKLQELNAIPPILDLLKSEYPVIQLL
ALKTLGVIANDKESRTMLRDNQGLDHLIKILETKELNDLHIEALAVIANCLEDMDTMVQIQQTGGLKLL
SFAENSTIPDIQKNAAKAITKAAYPDENRKL FHEQEVEKCLVALLGSENDGTKIAASQAIAMCENSISK
DFFNQGIPLQIQLLKSDNEEVREAAALALANLTTCPANANAAAADGIDPLINLLSSKRDGAIANAAT
VLTNMAMQEPLRLNIQNHDIMHAIISPLRSANTVVQSKAALAVTATACDVEARTELNSGGLEPLVELLR
SKNDEVRKHASWAVMVCAGDEL TANELCRLGALDILEEVNVSCTRKNKFSEAAYNKLLNNNL SLKYSQTG
YLSSSNIINDGFYDYGRINPGTKLLPLKELCLQEPSDLRAVLLINSKSYVSPSSMEDKSDVGYGQSIS
SSSLRRSSKEKNKNSYHFSAGFGSPIEDKSEPASGRNTVLSKATKEKGWRKSKGKKEEKVKEEEVVM
VVPKFVGESSDKWCPPSDPDFSMYVYEVTKSILPITNIKEQIEDLAKYVAEKMGKIPKEKLPDFSWE
LHISELKFQLKSNVPIPIGHVKKGIFYHRALLFKALADRIGIGCSLVRGEYGRAWNEVMLQNSRKGVIIG
LPAPEMYVIDLMFHPGGLMKLRSREADLYRFI
  
```

TRTRPLEQKLISEEDLAANDILDYKDDDDKV

**Chromatograms:** [https://cdn.origene.com/chromatograms/mk6695\\_e03.zip](https://cdn.origene.com/chromatograms/mk6695_e03.zip)

**Restriction Sites:** SgfI-MluI

**Cloning Scheme:**

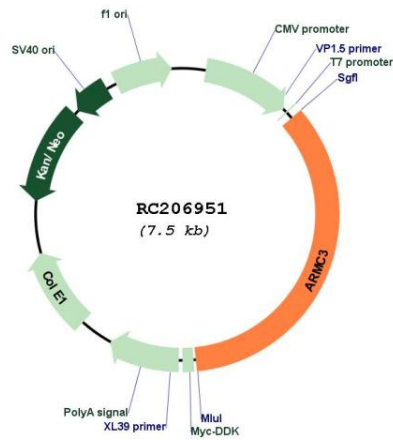
Cloning sites used for ORF Shuttling:



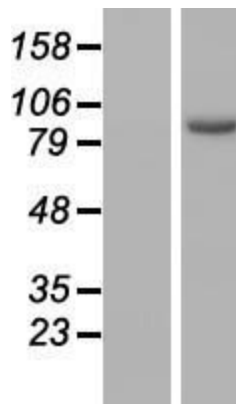
\* The last codon before the Stop codon of the ORF

<b>ACCN:</b>	NM_173081
<b>ORF Size:</b>	2616 bp
<b>OTI Disclaimer:</b>	The molecular sequence of this clone aligns with the gene accession number as a point of reference only. However, individual transcript sequences of the same gene can differ through naturally occurring variations (e.g. polymorphisms), each with its own valid existence. This clone is substantially in agreement with the reference, but a complete review of all prevailing variants is recommended prior to use. <a href="#">More info</a>
<b>OTI Annotation:</b>	This clone was engineered to express the complete ORF with an expression tag. Expression varies depending on the nature of the gene.
<b>Components:</b>	The ORF clone is ion-exchange column purified and shipped in a 2D barcoded Matrix tube containing 10ug of transfection-ready, dried plasmid DNA (reconstitute with 100 ul of water).
<b>Reconstitution Method:</b>	<ol style="list-style-type: none"><li>1. Centrifuge at 5,000xg for 5min.</li><li>2. Carefully open the tube and add 100ul of sterile water to dissolve the DNA.</li><li>3. Close the tube and incubate for 10 minutes at room temperature.</li><li>4. Briefly vortex the tube and then do a quick spin (less than 5000xg) to concentrate the liquid at the bottom.</li><li>5. Store the suspended plasmid at -20°C. The DNA is stable for at least one year from date of shipping when stored at -20°C.</li></ol>
<b>RefSeq:</b>	<a href="#">NM_173081.2</a>
<b>RefSeq Size:</b>	3765 bp
<b>RefSeq ORF:</b>	2619 bp
<b>Locus ID:</b>	219681
<b>UniProt ID:</b>	<a href="#">Q5W041</a>
<b>Cytogenetics:</b>	10p12.2
<b>MW:</b>	96.4 kDa
<b>Gene Summary:</b>	Armadillo/beta-catenin (CTNNB1; MIM 116806)-like (ARM) domains are imperfect 45-amino acid repeats involved in protein-protein interactions. ARM domain-containing proteins, such as ARMC3, function in signal transduction, development, cell adhesion and mobility, and tumor initiation and metastasis (Li et al., 2006 [PubMed 16915934]).[supplied by OMIM, Mar 2008]

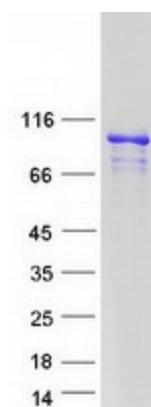
Product images:



Circular map for RC206951



Western blot validation of overexpression lysate (Cat# [LY406678]) using anti-DDK antibody (Cat# [TA50011-100]). Left: Cell lysates from untransfected HEK293T cells; Right: Cell lysates from HEK293T cells transfected with RC206951 using transfection reagent MegaTran 2.0 (Cat# [TT210002]).



Coomassie blue staining of purified ARMC3 protein (Cat# [TP306951]). The protein was produced from HEK293T cells transfected with ARMC3 cDNA clone (Cat# RC206951) using MegaTran 2.0 (Cat# [TT210002]).