

Product datasheet for **RC206948**

TRAF5 (NM_001033910) Human Tagged ORF Clone

Product data:

Product Type:	Expression Plasmids
Product Name:	TRAF5 (NM_001033910) Human Tagged ORF Clone
Tag:	Myc-DDK
Symbol:	TRAF5
Synonyms:	MGC:39780; RNF84
Mammalian Cell Selection:	Neomycin
Vector:	pCMV6-Entry (PS100001)
E. coli Selection:	Kanamycin (25 ug/mL)



[View online »](#)

ORF Nucleotide Sequence:

>RC206948 ORF sequence
 Red=Cloning site Blue=ORF Green=Tags(s)

TTTTGTAATACGACTCACTATAGGGCGGCCGGAATTCGTCGACTGGATCCGGTACCGAGGAGATCTGCC
 GCC**CGGATCGCC**

ATGGCTTATT**CAGAAGAGCATAAAGGTATGCCCTGTGGTTTCATCCGCCAGAATTCGGCAACTCCATT**
CCTTGGACTTTGAGCCCAGTATAGAGTACCAGTTTGTGGAGCGTTGGAAGAGCGCTACAAATGTGCCTT
CTGCCACTCGGTCTTACAACCCACCAGACAGGATGTGGCACCGCTTCTGCCAGCACTGCATCCTG
TCCCTGAGAGAATTAAACACAGTGCCAATCTGCCCTGTAGATAAAGAGGTCATCAATCTCAGGAGGTTT
TAAAGACAATTGTTGAAAAGAGAAGTCTCACTTATATGTATATTGCAGCAATGCTCCTGGATGTAA
TGCCAAGTTATTCTGGGCCGTACCAGGATCACCTTCAGCAGTGCTATTTCAACCTGTGCAGTGTCT
AATGAGAAGTGCCGGGAGCCAGTCTACGAAAGACCTGAAAGAGCATTGAGTGCATCCTGTCACTTTC
GAAAGGAAAAATGCCTTTATTGCAAAAAGGATGTGGTAGTCATCAATCTACAGAATCATGAGGAAAACTT
GTGTCCTGAATACCCAGTATTTTGTCCCAACAATTGTGCGAAGATTATTCTAAAACTGAGGTAGATGAA
CACCTGGCTGTATGTCTGAAGCTGAGCAAGACTGTCCTTTTAAGCACTATGGCTGTGCTGTAACGGATA
AACGGAGGAACCTGCAGCAACATGAGCATTACGCTTACGGGAGCACATGCGTTTTGGTTTTAGAAAAGAA
TGTCCAATTAGAAGAACAGATTTCTGACTTACACAAGAGCCTAGAACAGAAAAGTAAAAATCCAGCAG
CTAGCAGAAAATAAAGAAACTTGAAAAGGAGTTCAAGCAGTTTGCACAGTTGTTTGGCAAAAATGGAA
GCTTCTCCCAACATCCAGTTTTTGGCAGTCACATTGACAAGTCAGCTTGGCTAGAAGCTCAAGTGCA
TCAATTATTACAAATGGTTAACCAGCAACAAAAATAATTTGACCTGAGACCTTTGATGGAAGCAGTTGAT
ACAGTGAACAGAAAAATACCCTGCTAGAAAACAATGATCAAAGATTAGCCGTTTTAGAAGAGGAAAATA
ACAAACATGATACCCACATTAATATTCATAAAGCACAGCTGAGTAAAAATGAAGAGCGATTTAACTGCT
GGAGGGTACTTGCTATAATGAAAAGCTCATTGGAAAGGTGACAGATTACAAGATGAAGAAGAGAGAGGCC
GTGGATGGGCACACAGTGTCCATCTTACGCCAGTCCTTCTACACCAGCCGCTGTGGCTACCGCTCTGTG
CTAGAGCATACCTGAATGGGGATGGGTCAGGGAGGGGGTCACACCTGTCCCTATACTTTGTGGTCATGCG
AGGAGAGTTTACTACTGTTGCAGTGGCCATTACGGCAGAGGGTGACCCTGATGCTTCTGGACCAGAGT
GGCAAAAAGAACATTATGGAGACCTTCAAACCTGACCCCAATAGCAGCAGCTTTAAAAGACCTGATGGGG
AGATGAACATTGCATCTGGCTGTCCCGCTTTGTGGCTCATTCTGTTTTGGAGAATGCCAAGAACGCCTA
CATTAAGATGACTCTGTTCTTGAAGTGGCCGTGGACTTAACTGACCTGGAGGATCTC

ACGCGTACGCGGCCGCTCGAGCAGAAACTCATCTCAGAAGAGGATCTGGCAGCAAATGATATCCTGGATT
ACAAGGATGACGACGATAAGGTTTAA

Protein Sequence:

>RC206948 protein sequence
 Red=Cloning site Green=Tags(s)

MAYSEEHKGMPCGFIRQNSGNSISLDFEPSIEYQFVERLEERYKCAFCHSVLHNPQTGCGHRFCQHIL
 SLRELNTVPICPVDEKVIKSEQEVFKDNCCKREVLNLYVYCSNAPGCNAKVILGRYQDHLQQCLFQPVQCS
 NEKREPVLKDLKEHLSASCQFRKEKCLYCKKDVVIVINLQNHEENLCPYVPVFCPNNCAKIILKTEVDE
 HLAVCPEAEQDCPFKHYGCAVTDKRRNLQHEHSALREHMRLVLEKNVQLEEQISDLHKSLEQKESKIQQ
 LAETIKKLEKEFKQFAQLFGKNGSFLPNIQVFASHIDKSAWLEAQVHQLLQMVNQQNKFDRPLMEAVD
 TVKQKITLLENNDQRLAVLEETNKHDTHINIHKALSKNEERFKLLEGTGKLIWVTDYKMKKREA
 VDGHTVSIQSFSYTSRCGYRLCARAYLNGDGSGRGSHLSLYFVVMRGEFDSLLQWPFQRVTLMLLDQS
 GKKNIMETFKPDPNSSSFKRPDGMNIIASGCPRFVAHSVLENKNAIKDDTLFLKVAVDLTDLEDL

TRTRPLEQKLISEEDLAANDILDYKDDDDKV

Chromatograms:

https://cdn.origene.com/chromatograms/mk6322_h12.zip

Restriction Sites:

Sgfl-MluI

Cloning Scheme:


ACCN: NM_001033910

ORF Size: 1671 bp

OTI Disclaimer: The molecular sequence of this clone aligns with the gene accession number as a point of reference only. However, individual transcript sequences of the same gene can differ through naturally occurring variations (e.g. polymorphisms), each with its own valid existence. This clone is substantially in agreement with the reference, but a complete review of all prevailing variants is recommended prior to use. [More info](#)

OTI Annotation: This clone was engineered to express the complete ORF with an expression tag. Expression varies depending on the nature of the gene.

Components: The ORF clone is ion-exchange column purified and shipped in a 2D barcoded Matrix tube containing 10ug of transfection-ready, dried plasmid DNA (reconstitute with 100 ul of water).

- Reconstitution Method:**
1. Centrifuge at 5,000xg for 5min.
 2. Carefully open the tube and add 100ul of sterile water to dissolve the DNA.
 3. Close the tube and incubate for 10 minutes at room temperature.
 4. Briefly vortex the tube and then do a quick spin (less than 5000xg) to concentrate the liquid at the bottom.
 5. Store the suspended plasmid at -20°C. The DNA is stable for at least one year from date of shipping when stored at -20°C.

RefSeq: [NM_001033910.3](#)

RefSeq Size: 4013 bp

RefSeq ORF: 1674 bp

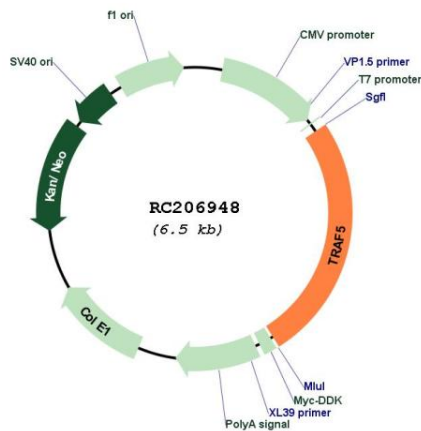
Locus ID: 7188

UniProt ID: [O00463](#)

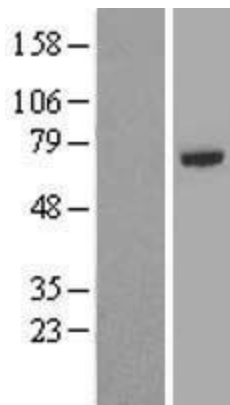
Cytogenetics: 1q32.3
Protein Families: Druggable Genome
Protein Pathways: Pathways in cancer, Small cell lung cancer
MW: 64.4 kDa

Gene Summary: The scaffold protein encoded by this gene is a member of the tumor necrosis factor receptor-associated factor (TRAF) protein family and contains a meprin and TRAF homology (MATH) domain, a RING-type zinc finger, and two TRAF-type zinc fingers. TRAF proteins are associated with, and mediate signal transduction from members of the TNF receptor superfamily. This protein is one of the components of a multiple protein complex which binds to tumor necrosis factor (TNF) receptor cytoplasmic domains and mediates TNF-induced activation. Multiple transcript variants encoding different isoforms have been found for this gene. [provided by RefSeq, Jan 2016]

Product images:



Circular map for RC206948



Western blot validation of overexpression lysate (Cat# [LY407875]) using anti-DDK antibody (Cat# [TA50011-100]). Left: Cell lysates from untransfected HEK293T cells; Right: Cell lysates from HEK293T cells transfected with [RC219306] using transfection reagent MegaTran 2.0 (Cat# [TT210002]).