

## Product datasheet for **RC206947**

### **TTC16 (NM\_144965) Human Tagged ORF Clone**

#### **Product data:**

Product Type:	Expression Plasmids
Product Name:	TTC16 (NM_144965) Human Tagged ORF Clone
Tag:	Myc-DDK
Symbol:	TTC16
Mammalian Cell Selection:	Neomycin
Vector:	pCMV6-Entry (PS100001)
E. coli Selection:	Kanamycin (25 ug/mL)



[View online »](#)

ORF Nucleotide  
Sequence:

>RC206947 ORF sequence  
Red=Cloning site Blue=ORF Green=Tags(s)

TTTTGTAATACGACTCACTATAGGGCGGCCGGGAATTCGTCGACTGGATCCGGTACCGAGGAGATCTGCC  
GCC**CGCATCGCC**

ATGACAGATTCGGACGAGGATGCCTGAAGGTTGACCAGGGCCCTCACGGGACATCCCAAAGCCATGGG  
TGATTCAGCCCCAAAGGGATCCTGCAGCACATCTTTGGGACCAGCCAGGTGTTCCAAAGCATCTGTGA  
TGTA AAAACCAAAGGTACAGGGTTAACAGTGCCCTCAAAGTCAGGGAATACTACTCCAGAGGCCAGCAG  
TGCTTGGAGCAGGCAGACTGGGAGACAGCTGTGCTGCTTCTCCCGCGCACTCCACCTGGACCCACAGC  
TGGTGGACTTCTATGCCTTACGGGCTGAGGCTACCTCCAGCTCTGTGACTTCTCCTCGGCCGCCAGAA  
CCTGCGAAGGGCCTACTCATTACAGCAGGACAACGCAAGCACCTGGAGCGCCTCACCTTTGTGCTCTAC  
CTACAGGGACAATGCCTTTTGGCAGTGTGCCTTCTGGATGCCCTGAATGTCTTCTCACATGCTGCTG  
AGCTCCAGCCTGAGAAACCATGCTTCCGTTACCGATGCATGGCCTGTCTCCTGGCCCTCAAGCAGCATCA  
GGCCTGCCTCAGCTCATACCAACGAGCTGAAGCAGGACACCACCAACGCCGATGTCTACATCTCCGG  
GCCAGACTCTACAACCTTCTCCAGAAGCCCCACCTCTGCTACCGGACCTGCACAGCGCCTTGCTGTTGA  
ATCCCAAGCACCCGAGGCCAGGATGCTGCTCCAGAAGATGGTGGCCAGGCCAGCAGGCGCGCCAAGA  
TGCGGGGATCCTGGCTGTGACGGCAAGCTGCAGCACGCACTGCAGCGGATCAACCGTGCCATCGAGAAC  
AACCTCTGGACCCAGTCTCTTCTTCCGGGGCACCATGTACCGACGGCTCCAGGAGTTCGATGGGG  
CAGTGGAGGACTTCTGAAGGTGCTGGACATGGTGACCAGGACCAGGAGGACATGGTGGCGCAGGCACA  
GCGCCAGCTGTTGCTGACCTACAACGACTTTGCCGTGCACTGTACAGGCAGGGCGCCTACCAGGAGGGC  
GTGCTGCTGCTGAACAAGGCCCTCCGGGACGAGCAGCAGGAGAAAGGACTCTACATCAACCGAGGCGATT  
GCTTCTCCAGCTGGGCAACCTGGCCTTTGCCGAGGCGGACTACCAGCAGGCGCTGGCGCTGAGTCTCA  
GGACGAGGGCGCCAACACGCGCACGGCCCTGCTGCAGGAGAAGATGGGCTTCTGCGAGCAGAGGCCAAG  
CAGTTCAGAAGGCAGAGAACCCTTCTCCACGGCCATCCGCGACAACCCCCAGAAGGCCAGTACTACC  
TGTACCGGGCCAAGAGCCGGCAGCTGCTGCAGAACATTTTGGGGCCCGCCAGGATGTGGCCACTGTCT  
GCTCTCAACCCCAAGCAACCAAGCTGTCCCTGCTGATGACCAACCTTCTCCGGGCATGTGCGTGGAG  
GAGGTGCTTAGCACCCAGATAGCCACCTGGCCAGGCTGCAGCTGGAGCAGATGGTGGAGGGCAGCTGC  
AGGCCGGCAGCCACAAGGCATTGTGGGATGCTTAAGCGGCACGAGTTGGAGCGCCAGAAGGCCTTGGC  
CCTGCAGCACTCATGGAAGCAGGGGAGCCTTTGATTGCGACCTCCGAGGAGCTGAAGGCCACCCCTGAG  
ATTCGCGAGGTAACACCGGAAGCTCAGAGGGAGAGGCTGAGGCCCTGAGGAGGAGGAAGAAAAGGAGA  
AGGAGAAAAAAGGGGAGAAAAATCAGAGCTCATACCTAGCAAGGTGGCGTCCCTGTCTGACAGCTACCT  
TGACCAGACCTTTCAGCTCCAGCATGAGCTTACAGGACCACAGGCACCTCAGAGACTGAGATGTCGGCT  
ATCTGCCAGGAATACAGGAGCACCTCAGCCACCGCGTGACATTCTGACTCGTCACTGTTGAAGACGC  
AATCCTCGGACTCTGGGAACAACAGGGAGGCACTAAGCCATGGTCCCAGAAAAATCAAGGCCACCCAGGG  
CCAGAGGCAGAGCCTTAGCAAGACTGAGCCACCCAGAGCCAGAGGCGGAACTCCAGCAAGCAAGGCC  
ACTATACACAAGAGGAACTCCAGCAAGACCAAGGCCACCCAAAGCCAGAGGCGGAACTCCAGCAAGACCA  
GGGCCACCCAGGGCCAGGGCCAGAGCTCCAGCAAGACTGAGGCCACTCAGGGCCAGAGGCAGAGCTCCAG  
CGAGATTGAGGCCACCCAGGGCCCAAGGCAGGAGGCCAGCAAGACCAAGACCACCCGAGGCCCAAGGCAG  
AGGCCCAAGAAAGTCAAGGCTGCTCGTGGCCGGAGCTGGAGACCCAGCAAGGTTGATGCCACCCAGGGCC  
GAAGCAGGGGACTGCTCCGAAGTTCACCAAGACTGAGGCTTTCTATGACTCAAACCTGGAGCCTCAGCAA  
GACTGAGTATGCCAAGGCCAGGGCCAGAGTCCAGCAAGGCTGAGGGTGGCCAGGGCAAGGCCAGGGC  
ATGAGCTCAACTCCAGCAAGGCCGAGTCCACCTGGGGACCCAGCCCAAGTCTCAGCAAACTGAGGTTG  
ATCAGGACCTCACCTACTATGAATCTGTC

**ACGCGT**ACGCGGCCGCTCGAGCAGAACTCATCTCAGAAGAGGATCTGGCAGCAATGATATCCTGGATT  
ACAAGGATGACGACGATAAGGTTTAA

**Protein Sequence:** >RC206947 protein sequence  
Red=Cloning site Green=Tags(s)

MTDSDEDALKVDQGPSRDIPKPWWIPAPKGILQHI FGTS HVFQSI CDV KPKVTGL TVPLKVREYYSRGQQ  
CLEQADWETAVLLFSRALHLDPQLVDFYALRAEAYLQLCDFSSAAQNLRRAYSLQQDNCKHLERLTFVLY  
LQGQCLFEQCAF LDALNVF SHAAELQPEKPCFRYRCMACLLAL KQHQA CLTLITNELKQDTTNADVYIFR  
ARLYNFLQKPHLCYRDLHSALLLNPKHPQARMLLQKMVAQAQARQDAGILAVQGK LQHALQRINRAIEN  
NPLDPSLFLFRGTM YRRLQEF DGAVEDFLKVLDMVTE DQEDMVRQAQRQLLLTYNDFAVHCYRQ GAYQEG  
VLLL NKALRDEQQEKGLYINRGDCFFQLGNLAF AEADYQQALALSPQDEGANTRTG LLQEKMGFCEQRRK  
QFQKAENHFSTAIRHNPQKAQYYLYRAKSRQLLQNI FGARQDVATVLLL NPKQPKLSLLMTNLFPGMSVE  
EVLSTQIAHLARLQLEQMVEGSLQAGSPQGI VGM LKRHELERQKALALQHSWKQGEPLIATSEELKATPE  
IPQVKPGSSEGEAEAPEEEEEKEKEKKGEKKSELIPSKVASLSDSYLDQTSSASSMSFRTTGTSETEMSA  
ICQEYRSTSATAVTFSDSLLKTQSSDSGNREALSHGPRKIKATQGQRQSLSKTEPTQSQRNNSKTKA  
TIHKRNSSKTKATQSQRNNSKTRATQGGQSSSKTEATQGQRQSSEIEATQGPRQEPSKTKTTRSPRQ  
RPRKVKAAARGRSWRPSKVDATQGRSRGLLRSSTKTEAFYDSNWSLSKTEYAQGGQQRSSKAEGAQKKSQG  
MSSTSSKAESTWGPSPSLSKTEVDQDLTYYESV

TRTRPLEQKLISEEDLAANDILDYKDDDDKV

**Chromatograms:** [https://cdn.origene.com/chromatograms/mk6322\\_d05.zip](https://cdn.origene.com/chromatograms/mk6322_d05.zip)

**Restriction Sites:** SgfI-MluI

**Cloning Scheme:**


**ACCN:** NM\_144965

**ORF Size:** 2619 bp

**OTI Disclaimer:** The molecular sequence of this clone aligns with the gene accession number as a point of reference only. However, individual transcript sequences of the same gene can differ through naturally occurring variations (e.g. polymorphisms), each with its own valid existence. This clone is substantially in agreement with the reference, but a complete review of all prevailing variants is recommended prior to use. [More info](#)

**OTI Annotation:** This clone was engineered to express the complete ORF with an expression tag. Expression varies depending on the nature of the gene.

**Components:** The ORF clone is ion-exchange column purified and shipped in a 2D barcoded Matrix tube containing 10ug of transfection-ready, dried plasmid DNA (reconstitute with 100 ul of water).

- Reconstitution Method:**
1. Centrifuge at 5,000xg for 5min.
  2. Carefully open the tube and add 100ul of sterile water to dissolve the DNA.
  3. Close the tube and incubate for 10 minutes at room temperature.
  4. Briefly vortex the tube and then do a quick spin (less than 5000xg) to concentrate the liquid at the bottom.
  5. Store the suspended plasmid at -20°C. The DNA is stable for at least one year from date of shipping when stored at -20°C.

**RefSeq:** [NM\\_144965.3](#)

**RefSeq Size:** 2884 bp

**RefSeq ORF:** 2622 bp

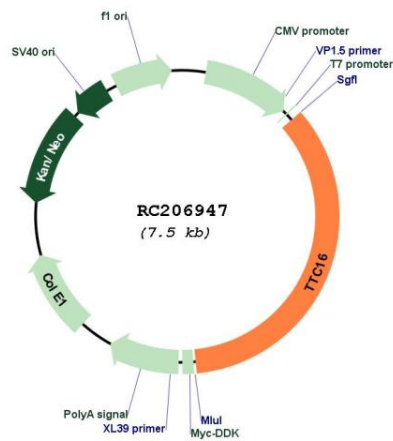
**Locus ID:** 158248

**UniProt ID:** [Q8NEE8](#)

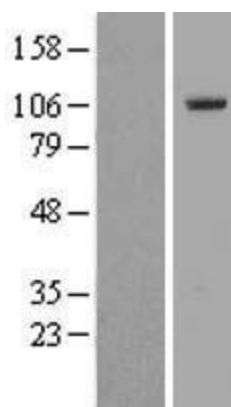
**Cytogenetics:** 9q34.11

**MW:** 98.2 kDa

**Product images:**



Circular map for RC206947



Western blot validation of overexpression lysate (Cat# [LY408103]) using anti-DDK antibody (Cat# [TA50011-100]). Left: Cell lysates from untransfected HEK293T cells; Right: Cell lysates from HEK293T cells transfected with RC206947 using transfection reagent MegaTran 2.0 (Cat# [TT210002]).