

Product datasheet for **RC206946**

RAB37 (NM_175738) Human Tagged ORF Clone

Product data:

Product Type: Expression Plasmids
Product Name: RAB37 (NM_175738) Human Tagged ORF Clone
Tag: Myc-DDK
Symbol: RAB37
Mammalian Cell Selection: Neomycin
Vector: pCMV6-Entry (PS100001)
E. coli Selection: Kanamycin (25 ug/mL)
ORF Nucleotide Sequence: >RC206946 ORF sequence
 Red=Cloning site Blue=ORF Green=Tags(s)

TTTTGTAATACGACTCACTATAGGGCGGCCGGAATTCGTCGACTGGATCCGGTACCGAGGAGATCTGCC
 GCC**CGATCGCC**

ATGGACCTGCAGAGACCCGATTCTACCAGGGAGGAGCTGGCCCTGACTTCAACGACCACGTCCTGCATA
 AGACCATCCTGGTGGGTGACAGTGGTGTGGAAAGACGTCCTCTGCTGGTTCAGTTCGATCAGGGCAAAGTT
 CATCCCCGGCTCCTTCTCGGCCACTGTGGGCATCGGATTCACGAACAAGGTGGTACTGTGGATGGCGTG
 AGAGTGAAGCTGCAGATCTGGACACCGCTGGGACGGAACGTTCCGAAGCGTCACCCATGCTTATTACA
 GAGATGCTCAGGCCTTCTCTGCTGTATGACATCACCAACAATCTTCTTCGACAACATCAGGGCCTG
 GCTCACTGAGATTCATGAGTATGCCAGAGGGAGTGGTGCATGCTGCTAGGCCAACAAGCGGATATG
 AGCAGCGAAAGAGTGATCCGTTCCGAAGACGGAGAGACCTTGGCCAGGGAGTACGGTGTTCCTTCTGG
 AGACCAGCGCAAGACTGGCATGAATGTGGAGTTAGCCTTCTGGCCATCGCCAAGGAACTGAAATACCG
 GGCCGGGCATCAGGCGGATGAGCCAGCTTCCAGATCCGAGACTATGTAGAGTCCAGAAGAAGCGCTCC
 AGCTGCTGCTCCTTCATG

ACGCGTACGCGGCCGCTCGAGCAGAAACTCATCTCAGAAGAGGATCTGGCAGCAAATGATATCCTGGATT
 ACAAGGATGACGACGATAAGGTTTAA

Protein Sequence: >RC206946 protein sequence
 Red=Cloning site Green=Tags(s)

MDLQRPDSYQGGAGPDFNDHVLHKTILVGDGSGVGTSLLVQFDQKFI PGFSFATVIGIFTNKVVTVDGV
 RVKLLQIWDTAGQERFRSVTHAYYRDAQALLLLYDITNKSSFNIRAWL TEIHEYAQRDVIIMLLGNKADM
 SSERVIRSEDGETLAREYGVPFLETSKATGMNVELAFLAIKELKYRAGHQADEPSFQIRDYVESQKKRS
 SCCSFM

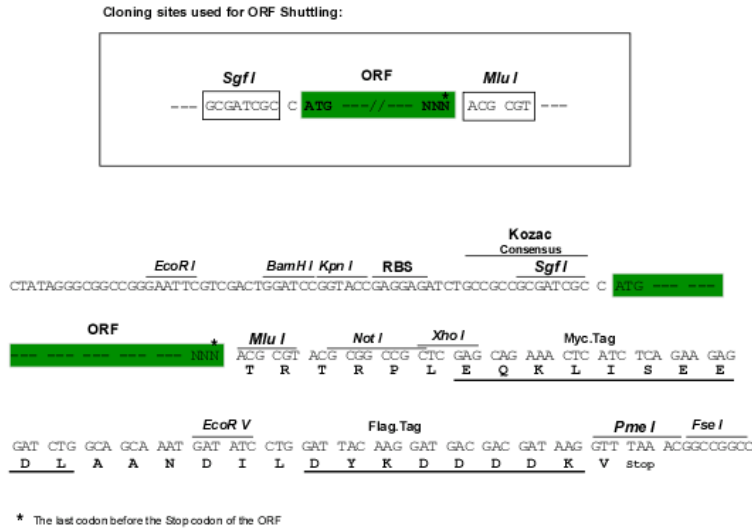
TRTRPLEQKLISEEDLAANDILDYKDDDDKV



Chromatograms: https://cdn.origene.com/chromatograms/mk6341_d08.zip

Restriction Sites: SgfI-MluI

Cloning Scheme:



ACCN: NM_175738

ORF Size: 648 bp

OTI Disclaimer: The molecular sequence of this clone aligns with the gene accession number as a point of reference only. However, individual transcript sequences of the same gene can differ through naturally occurring variations (e.g. polymorphisms), each with its own valid existence. This clone is substantially in agreement with the reference, but a complete review of all prevailing variants is recommended prior to use. [More info](#)

OTI Annotation: This clone was engineered to express the complete ORF with an expression tag. Expression varies depending on the nature of the gene.

Components: The ORF clone is ion-exchange column purified and shipped in a 2D barcoded Matrix tube containing 10ug of transfection-ready, dried plasmid DNA (reconstitute with 100 ul of water).

Reconstitution Method:

1. Centrifuge at 5,000xg for 5min.
2. Carefully open the tube and add 100ul of sterile water to dissolve the DNA.
3. Close the tube and incubate for 10 minutes at room temperature.
4. Briefly vortex the tube and then do a quick spin (less than 5000xg) to concentrate the liquid at the bottom.
5. Store the suspended plasmid at -20°C. The DNA is stable for at least one year from date of shipping when stored at -20°C.

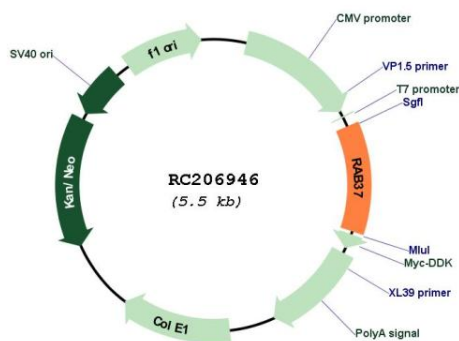
Note: Plasmids are not sterile. For experiments where strict sterility is required, filtration with 0.22um filter is required.

RefSeq: [NM_175738.5](#)

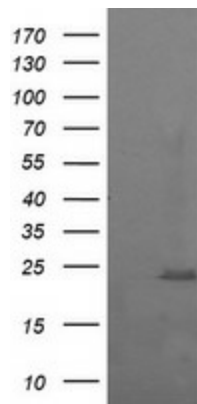
RefSeq Size: 3091 bp

RefSeq ORF:	651 bp
Locus ID:	326624
UniProt ID:	<u>Q96AX2</u>
Cytogenetics:	17q25.1
Protein Families:	Druggable Genome, Secreted Protein
MW:	24.2 kDa
Gene Summary:	Rab proteins are low molecular mass GTPases that are critical regulators of vesicle trafficking. For additional background information on Rab proteins, see MIM 179508.[supplied by OMIM, Apr 2006]

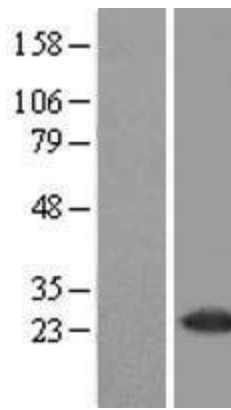
Product images:



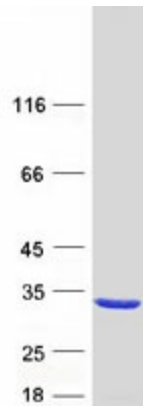
Circular map for RC206946



HEK293T cells were transfected with the pCMV6-ENTRY control (Cat# [PS100001], Left lane) or pCMV6-ENTRY RAB37 (Cat# RC206946, Right lane) cDNA for 48 hrs and lysed. Equivalent amounts of cell lysates (5 ug per lane) were separated by SDS-PAGE and immunoblotted with anti-RAB37 (Cat# [TA505311]). Positive lysates [LY406250] (100ug) and [LC406250] (20ug) can be purchased separately from OriGene.



Western blot validation of overexpression lysate (Cat# [LY406250]) using anti-DDK antibody (Cat# [TA50011-100]). Left: Cell lysates from untransfected HEK293T cells; Right: Cell lysates from HEK293T cells transfected with RC206946 using transfection reagent MegaTran 2.0 (Cat# [TT210002]).



Coomassie blue staining of purified RAB37 protein (Cat# [TP306946]). The protein was produced from HEK293T cells transfected with RAB37 cDNA clone (Cat# RC206946) using MegaTran 2.0 (Cat# [TT210002]).