

Product datasheet for **RC206944**

POLDIP1 (KCTD13) (NM_178863) Human Tagged ORF Clone

Product data:

Product Type:	Expression Plasmids
Product Name:	POLDIP1 (KCTD13) (NM_178863) Human Tagged ORF Clone
Tag:	Myc-DDK
Symbol:	POLDIP1
Synonyms:	BACURD1; FKSG86; hBACURD1; PDIP1; POLDIP1
Mammalian Cell Selection:	Neomycin
Vector:	pCMV6-Entry (PS100001)
E. coli Selection:	Kanamycin (25 ug/mL)
ORF Nucleotide Sequence:	>RC206944 ORF sequence Red=Cloning site Blue=ORF Green=Tags(s)

TTTTGTAATACGACTCACTATAGGGCGGCCGGAATTCGTCGACTGGATCCGGTACCGAGGAGATCTGCCGCC**CGATCGCC**

ATGTCGGCGGAGGCCCTCGGGCCCGGCTGCCGCCGGCCCGTCCCTGGAAGCCCCAAGCCCTCGGGTCTCGAGCCTGGCCCGCCCTACGGTCTCAAGCCGCTGACCCGAACAGCAAATACGTGAAGCTGAACGTGGGCGGCTCGTTGCACTACACCACGCTGCGCACCTCACGGGACAGGACACCATGCTCAAAGCCATGTTAGCGGCCGCTGGAGGTGCTGACCGATGCCGGAGGTTGGGTGCTGATTGACCGGAGCGGCCGCTCACTTTGTACAATCCTCAATTACCTGCGGGATGGGTCTGTGCCACTGCCGGAGAGTACGAGAGAAGTGGGGGAGCTGCTGGGGGAAGCAGCTACTACCTGGTGCAGGGCCTGATTGAGGACTGCCAGCTGGCGCTGCAGCAAAAAAGGGAGACGCTGTCCCGCTGTGCCTCATCCCCATGGTGACATCTCCCGGGAGGAGCAGCAGCTCCTGGCCAGCACCTCAAAGCCGTGGTGAAGCTCCTGCACAACCGCAGTAACAACAAGTACTCCTACACCAGCACCTCAGATGACAACCTACTTAAGAATCGAGCTGTTTCGACAAGCTGGCCCTGCGCTTCCACGGGCGGCTACTCTTCTCAAGGATGTCTGGGGACGAGATCTGTTGCTGGTCTTTCTACGGGCAGGGCCGCAAAATCCCGAGGTGTGCTGCACCTCCATTGTCTATGCTACGGAGAAGAAGCAGACCAAGGTGGAATTTCCAGAGGCCGGATCTTCGAGGAGACCCTGAACATCCTCATCTACGAGACTCCCCGGGGCCAGACCCAGCCCTCCTGAGGCCACAGGGGAGCAGCTGGAGCTGGTGGGCTGGCCGCGGGGAGGATGAAGAGAACCGAGAGCACC GTGCCGAGGATCCATGTCCGGGCCATATCACCCACGACGAGCGTCCATGGCCAACAAATTGTCTTCAAGGAC

ACGCGTACGCGGCCGCTCGAGCAGAAACTCATCTCAGAAGAGGATCTGGCAGCAAATGATATCCTGGATTACAAGGATGACGACGATAAGGTTTAA



[View online »](#)

Protein Sequence: >RC206944 protein sequence
Red=Cloning site Green=Tags(s)

MSAEASGPAAAAAPSLEAPKPSGLEPGPAAYGLKPLTPNSKYVKLVGGSLHYTTLRTL TGQDTMLKAMF
 SGRVEVLTDAGGWVLIDRSGRHFGTILNLYLRDGSVPLPESTRELGELLGEARYYL VQGLIEDCQLALQOK
 RETLSPLCLIPMVTSPREEQQLLASTSKPVVLLHNRSNNKYSYTSDDNLLKNIELFDKLALRFHGRL
 LFLKDVLDGEICCWSFYGQGRKIAEVCCSIVYATEKKQTKVEFPEARIFEETLNILIIYETPRGPD
 EATGGAAGAGGAGRGEDEENREHRVRRIHVRRHITHDERPHGQQIVFKD

TRTRPLEQKLISEEDLAANDILDYKDDDDKV

Chromatograms: https://cdn.origene.com/chromatograms/mk6533_c03.zip

Restriction Sites: SgfI-MluI

Cloning Scheme:



ACCN: NM_178863

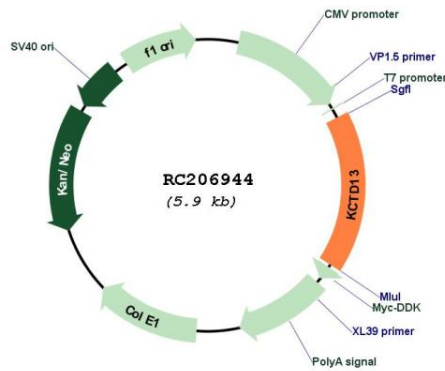
ORF Size: 987 bp

OTI Disclaimer: Due to the inherent nature of this plasmid, standard methods to replicate additional amounts of DNA in E. coli are highly likely to result in mutations and/or rearrangements. Therefore, OriGene does not guarantee the capability to replicate this plasmid DNA. Additional amounts of DNA can be purchased from OriGene with batch-specific, full-sequence verification at a reduced cost. Please contact our customer care team at custsupport@origene.com or by calling 301.340.3188 option 3 for pricing and delivery.

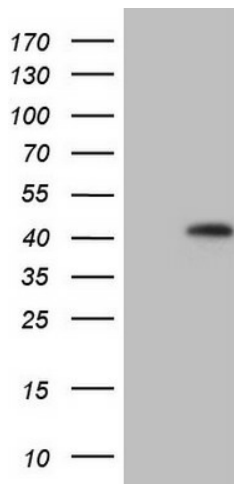
The molecular sequence of this clone aligns with the gene accession number as a point of reference only. However, individual transcript sequences of the same gene can differ through naturally occurring variations (e.g. polymorphisms), each with its own valid existence. This clone is substantially in agreement with the reference, but a complete review of all prevailing variants is recommended prior to use. [More info](#)

OTI Annotation:	This clone was engineered to express the complete ORF with an expression tag. Expression varies depending on the nature of the gene.
Components:	The ORF clone is ion-exchange column purified and shipped in a 2D barcoded Matrix tube containing 10ug of transfection-ready, dried plasmid DNA (reconstitute with 100 ul of water).
Reconstitution Method:	<ol style="list-style-type: none">1. Centrifuge at 5,000xg for 5min.2. Carefully open the tube and add 100ul of sterile water to dissolve the DNA.3. Close the tube and incubate for 10 minutes at room temperature.4. Briefly vortex the tube and then do a quick spin (less than 5000xg) to concentrate the liquid at the bottom.5. Store the suspended plasmid at -20°C. The DNA is stable for at least one year from date of shipping when stored at -20°C.
RefSeq:	NM_178863.2 , NP_849194.1
RefSeq Size:	1745 bp
RefSeq ORF:	990 bp
Locus ID:	253980
UniProt ID:	Q8WZ19
Cytogenetics:	16p11.2
Protein Families:	Ion Channels: Other, Transcription Factors
MW:	36.4 kDa
Gene Summary:	Substrate-specific adapter of a BCR (BTB-CUL3-RBX1) E3 ubiquitin-protein ligase complex required for synaptic transmission (PubMed:19782033). The BCR(KCTD13) E3 ubiquitin ligase complex mediates the ubiquitination of RHOA, leading to its degradation by the proteasome (PubMed:19782033) Degradation of RHOA regulates the actin cytoskeleton and promotes synaptic transmission (By similarity).[UniProtKB/Swiss-Prot Function]

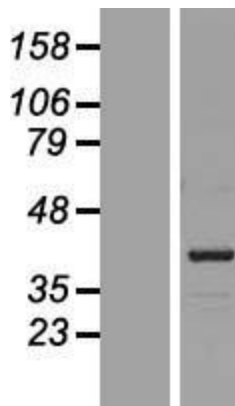
Product images:



Circular map for RC206944



HEK293T cells were transfected with the pCMV6-ENTRY control (Cat# [PS100001], Left lane) or pCMV6-ENTRY KCTD13 (Cat# RC206944, Right lane) cDNA for 48 hrs and lysed. Equivalent amounts of cell lysates (5 ug per lane) were separated by SDS-PAGE and immunoblotted with anti-KCTD13 (Cat# [TA808801])(1:2000). Positive lysates [LY405827] (100ug) and [LC405827] (20ug) can be purchased separately from OriGene.



Western blot validation of overexpression lysate (Cat# [LY405827]) using anti-DDK antibody (Cat# [TA50011-100]). Left: Cell lysates from untransfected HEK293T cells; Right: Cell lysates from HEK293T cells transfected with RC206944 using transfection reagent MegaTran 2.0 (Cat# [TT210002]).