

Product datasheet for RC206930

CYP27C1 (NM_001001665) Human Tagged ORF Clone

Product data:

| | |
|---------------------------|--|
| Product Type: | Expression Plasmids |
| Product Name: | CYP27C1 (NM_001001665) Human Tagged ORF Clone |
| Tag: | Myc-DDK |
| Symbol: | CYP27C1 |
| Mammalian Cell Selection: | Neomycin |
| Vector: | pCMV6-Entry (PS100001) |
| E. coli Selection: | Kanamycin (25 ug/mL) |
| ORF Nucleotide Sequence: | >RC206930 representing NM_001001665 Red=Cloning site Blue=ORF Green=Tags(s) |

TTTTGTAATACGACTCACTATAGGGCGGCCGGAATTCGTCGACTGGATCCGGTACCGAGGAGATCTGCC
GCC**CGATCGCC**

ATGAGAAGCGTATTGAGACAAAGAATTCTGAAACCGAAAGATGTGGCCATTTATTCTGGAGAAGTCAACC
AAGTTATTGCTGACTTAATTAAGAATCTACCTCCTCAGGAGCCAGGCAGAAGATGGAGAAACCGTGAC
CAATGTCAATGATCTTTCTTCAAATATCAATGGAAGGAGTGGCCACCATCCTTTATGAGAGTCGTTTTG
GGCTGCCTGAAAAACAGCATCCACAGCTGACTGTGGAATACATCGAGGCCCTGGAGCTCATGTTTAGCA
TGTTCAAGACCTCCATGTATGCAGGCGCCATCCCAGATGGCTTCGCCCTTCATCCCAAAGCCCTGGCC
GGAATTCTGCAGGTCCTGGGATGGACTCTCAAATTCAGCCAAATTCATGTTGACAACAAGTTGAGGGAC
ATACAGTACCAAATGGACCGAGGCCGAGGGTGTAGCGGGGACTTCTCACATACCTCTTCTTAGCCAGG
CTCTGACGCTGCAGGAGATCTACGCCAACGTGACTGAGATGCTGCTGGCCGGCGTCGACACGACGTCCTT
CACCTTGTCTGGACTGTGTACATCCTGGCAAGGCACCCAGAAGTGCAGCAGACGGTGTACCGGGAGATT
GTGAAGAATTTAGGGAAAGGCATGTTCCAACGTGAGCTGATGTCCCAAGGTCCTGCTGAGAGCTC
TCCTTAAGGAAACCTGAGGCTGTTCCAGTGTGCCAGGAAACGGCCGGGTACCCAGGAAGACCTGGT
TATTGGCGGGTATCTGATTCGAAAGGCACCCAGCTGGCCCTTGGCCACTATGCCACATCGTACCAGGAT
GAGAACTCCCTCGGGCAAGGAGTTCGGCCTGAGCGCTGGCTGCGGAAAGGAGACTTAGATAGAGTTG
ACAATTTTGATCCATCCCTTTGGTATGGGGTTCGCAGCTGCATAGGGCGGAGAAATGCAGAACTGGA
GATTCACCTCGTCGTGATCCAGTTGCTTCAACATTTTGTAGATCAAACATCTTCTCAGACCAATGCTGTT
CATGCAAAAACCCACGGGCTCCTGACGCCAGGGGGCCATCCACGTGCGATTTGTTAACAGAAAG

ACGCGTACGCGGCCGCTCGAGCAGAAACTCATCTCAGAAGAGGATCTGGCAGCAAATGATATCCTGGATT
ACAAGGATGACGACGATAAGGTTTAA



[View online »](#)

Protein Sequence: >RC206930 representing NM_001001665
Red=Cloning site Green=Tags(s)

MRSVLRQRILKPKDVAIYSGEVNQVIADLIKRIYLLRSQAEDGETVTNVNDLFFKYSMEGVATILYESRL
 GCLENSIPQLTVEYIEALELMFSMFKTSMYAGAI PRWLRPFIPKPWREFCRSWDGLFKFSQIHVDNKL RD
 IQYQMDRGRRVSGLLTYLFLSQALTLQEIYANVTEMLLAGVDTSFTLSWTVYILARHPEVQQT VYREI
 VKNLGERHVPATAADVPKVPLVRALLKETLRLFPVLPNGRVTQEDLVIGGYLIPKGTQLALCHYATSYQD
 ENFPRAKEFRPERWLRKGDLD RVDNFGSIPFGHGVRSCIGRRIAELEIHLVVIQLLQHF EIKTSSQTNAV
 HAKTHGLLTPGGPIHVRVFN RK

TRTRPLEQKLISEEDLAANDILDYKDDDDKV

Chromatograms: https://cdn.origene.com/chromatograms/mg4202_f10.zip

Restriction Sites: SgfI-MluI

Cloning Scheme:

Cloning sites used for ORF Shuttling:



* The last codon before the Stop codon of the ORF

ACCN: NM_001001665

ORF Size: 1116 bp

OTI Disclaimer: The molecular sequence of this clone aligns with the gene accession number as a point of reference only. However, individual transcript sequences of the same gene can differ through naturally occurring variations (e.g. polymorphisms), each with its own valid existence. This clone is substantially in agreement with the reference, but a complete review of all prevailing variants is recommended prior to use. [More info](#)

OTI Annotation: This clone was engineered to express the complete ORF with an expression tag. Expression varies depending on the nature of the gene.

Components: The ORF clone is ion-exchange column purified and shipped in a 2D barcoded Matrix tube containing 10ug of transfection-ready, dried plasmid DNA (reconstitute with 100 ul of water).

Reconstitution Method:

1. Centrifuge at 5,000xg for 5min.
2. Carefully open the tube and add 100ul of sterile water to dissolve the DNA.
3. Close the tube and incubate for 10 minutes at room temperature.
4. Briefly vortex the tube and then do a quick spin (less than 5000xg) to concentrate the liquid at the bottom.
5. Store the suspended plasmid at -20°C. The DNA is stable for at least one year from date of shipping when stored at -20°C.

RefSeq: [NM_001001665.2](#), [NP_001001665.2](#)

RefSeq Size: 4725 bp

RefSeq ORF: 1119 bp

Locus ID: 339761

UniProt ID: [Q4G0S4](#)

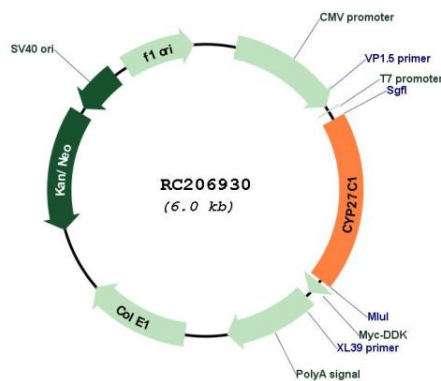
Cytogenetics: 2q14.3

Protein Families: Druggable Genome, P450

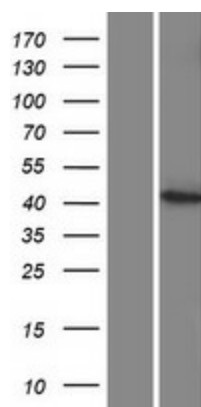
MW: 42.5 kDa

Gene Summary: This gene encodes a member of the cytochrome P450 superfamily of enzymes. The cytochrome P450 proteins are monooxygenases which catalyze many reactions involved in drug metabolism and synthesis of cholesterol, steroids and other lipids. [provided by RefSeq, Jul 2008]

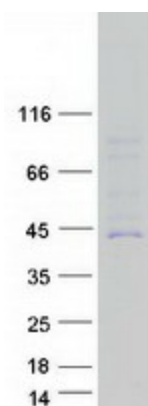
Product images:



Circular map for RC206930



Western blot validation of overexpression lysate (Cat# [LY424236]) using anti-DDK antibody (Cat# [TA50011-100]). Left: Cell lysates from untransfected HEK293T cells; Right: Cell lysates from HEK293T cells transfected with RC206930 using transfection reagent MegaTran 2.0 (Cat# [TT210002]).



Coomassie blue staining of purified CYP27C1 protein (Cat# [TP306930]). The protein was produced from HEK293T cells transfected with CYP27C1 cDNA clone (Cat# RC206930) using MegaTran 2.0 (Cat# [TT210002]).