

## Product datasheet for **RC206910**

### STK33 (NM\_030906) Human Tagged ORF Clone

#### Product data:

Product Type:	Expression Plasmids
Product Name:	STK33 (NM_030906) Human Tagged ORF Clone
Tag:	Myc-DDK
Symbol:	STK33
Mammalian Cell Selection:	Neomycin
Vector:	pCMV6-Entry (PS100001)
E. coli Selection:	Kanamycin (25 ug/mL)



[View online »](#)

**ORF Nucleotide Sequence:**

>RC206910 ORF sequence  
 Red=Cloning site Blue=ORF Green=Tags(s)

TTTTGTAATACGACTCACTATAGGGCGGCCGGAATTCGTCGACTGGATCCGGTACCGAGGAGATCTGCC  
 GCC**CGCATCGCC**

ATGGCTGATAGTGGCTTAGATAAAAAATCCACAAAATGCCCCGACTGTTTCATCTGCTTCTCAGAAAGATG  
 TACTTTGTGTATGTTCCAGCAAAAACAAGGTTCCCTCCAGTTTTGGTGGTAAATGTACAGACATCAAG  
 CATTGGTAGTGCAGAATCTTTAATTTCACTGGAGAGAAAAAAGAAAAAATATCAACAGAGATATAACC  
 TCCAGGAAAGATTTGCCCTCAAGAACCTCAAATGTAGAGAGAAAAGCATCTCAGCAACAATGGGGTCGGG  
 GCAACTTTACAGAAGGAAAAGTTCTCACATAAGGATTGAGAAATGGAGCTGCTATTGAGGAAATCTATAC  
 CTTTGGAAAGAATATTGGGAAAAGGGAGCTTTGGAATAGTCATTGAAGCTACAGACAAGGAAAACAGAAACG  
 AAGTGGCAATTAAAAAGTGAACAAAGAAAAGGCTGGAAGCTCCGCTGTGAAGTACTTGAACGAGAGG  
 TGAACATTTCTGAAAAGTGTAAACATGAACACATCATACTGGAACAAGTATTTGAAACGCCAAAGAA  
 AATGTACCTTGTGATGGAGCTTTGTGAGGATGGAGAACTCAAAGAAATTCGGATAGGAAAGGCCATTTT  
 TCAGAGAATGAGACAAGGTGGATCATTCAAAGTCTCGCATCAGCTATAGCATATCTTCAACAATGATA  
 TTGTACATAGGGATCTGAACTGGAAAATATAATGGTTAAAAGCAGTCTTATTGATGATAACAATGAAAT  
 AAACCTTAAACATAAAGGTGACTGATTTTGGCTTAGCGGTGAAGAAGCAAAGTAGGAGTGAAGCCATGCTG  
 CAGGCCACATGTGGGACTCCTATCTATATGGCCCTGAAGTTATCAGTGCCACGACTATAGCCAGCAGT  
 GTGACATTTGGAGCATAGGCGTCGTAATGTACATGTTATTACGTGGAGAACCACCCTTTTTGGCAAGCTC  
 AGAAGAGAAGCTTTTTGAGTTAATAAGAAAAGGAGAACTACATTTGAAAATGCAGTCTGGAATTCATA  
 AGTGACTGTGCTAAAAGTGTGTTGAAACAACCTTATGAAAGTAGATCCTGCTCACAGAATCACAGCTAAGG  
 AACTACTAGATAACCAAGTGGTTAACAGGCAATAAACTTTCTTCGTTGAGACCAACCAATGTATTAGAGAT  
 GATGAAGGAATGGAAAAATAACCCAGAAAAGTGTGAGGAAAACACAACAGAAAGAGAAGAATAAGCCGTCC  
 ACTGAAGAAAAGTTGAAAAGTTACCAACCTGGGAAAATGTCCCTGAGACCAATTACACTTCAGATGAAG  
 AGGAGGAAAAACAGTCTACTACTTATGAAAAGCAATTTCTGCAACCAGTAAGGACAACCTTTGATATGTG  
 CAGTTCAAGTTTACATCTAGCAAACCTCTCCAGCTGAAATCAAGGGAGAAATGGAGAAAAACCCCTGTG  
 ACTCAAGCCAAGGAACAGCAACCAAGTACCCTGCTAAATCCGGCGCCCTGTCCAGAACCAAAAAGAAAC  
 TC

**ACGCGT**ACGCGGCCGCTCGAGCAGAAACTCATCTCAGAAGAGGATCTGGCAGCAAATGATATCCTGGATT  
 ACAAGGATGACGACGATAAGGTTTAA

**Protein Sequence:**

>RC206910 protein sequence  
 Red=Cloning site Green=Tags(s)

MADSGLDKKSTKCPDCSSASQKDVLCVCSKTRVPPVLVEMSQTSIGSAESLISLERKKEKNINRDIT  
 SRKDLPSRTSNVERKASQQWGRGNFTEGKVPHIRIENGAAIEEYTFGRILGKGSFGIVIEATDKETET  
 KWAICKVNKEKAGSSAVKLLERENVILKSVKHEHIHLEQVFETPKKMYLVMELCEDGELKEILDRKGHF  
 SENETRWIIQSLASAIAYLHNNDIVHRDLKLEINMVKSSLIDNNEINLNKIVTDFGLAVKKQSRSEAML  
 QATCGTPIYMAPEVISAHDYSQQCDIWSIGVVMYMLLRGEPFLASSEKLFELIRKGLHFENAVWNSI  
 SDCAKSVLKQLMKVDPAHRITAKELLDNQWLTGNKLSVRPTNVLEMMKEWKNNPESVEENTTEEKNKPS  
 TEEKLSYQWPWGNVPETNYTSDEEEKQSTTYEKQFPATSKDNFDMCSSFTSSKLLPAEIKGEMEKTPV  
 TPSQGTATKYPKSGALSRTKKKL

**TR**TRPLEQK**LI**SEEDLAANDILDYKDDDDK**V**

**Chromatograms:**

[https://cdn.origene.com/chromatograms/mk6041\\_g02.zip](https://cdn.origene.com/chromatograms/mk6041_g02.zip)

**Restriction Sites:**

Sgfl-Mlul

**Cloning Scheme:**


**ACCN:** NM\_030906

**ORF Size:** 1542 bp

**OTI Disclaimer:** The molecular sequence of this clone aligns with the gene accession number as a point of reference only. However, individual transcript sequences of the same gene can differ through naturally occurring variations (e.g. polymorphisms), each with its own valid existence. This clone is substantially in agreement with the reference, but a complete review of all prevailing variants is recommended prior to use. [More info](#)

**OTI Annotation:** This clone was engineered to express the complete ORF with an expression tag. Expression varies depending on the nature of the gene.

**Components:** The ORF clone is ion-exchange column purified and shipped in a 2D barcoded Matrix tube containing 10ug of transfection-ready, dried plasmid DNA (reconstitute with 100 ul of water).

- Reconstitution Method:**
1. Centrifuge at 5,000xg for 5min.
  2. Carefully open the tube and add 100ul of sterile water to dissolve the DNA.
  3. Close the tube and incubate for 10 minutes at room temperature.
  4. Briefly vortex the tube and then do a quick spin (less than 5000xg) to concentrate the liquid at the bottom.
  5. Store the suspended plasmid at -20°C. The DNA is stable for at least one year from date of shipping when stored at -20°C.

**RefSeq:** [NM\\_030906.4](#)

**RefSeq Size:** 2764 bp

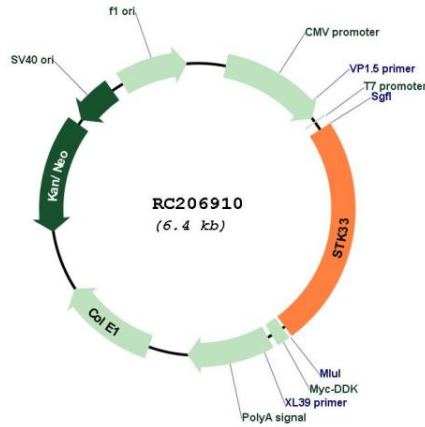
**RefSeq ORF:** 1545 bp

**Locus ID:** 65975

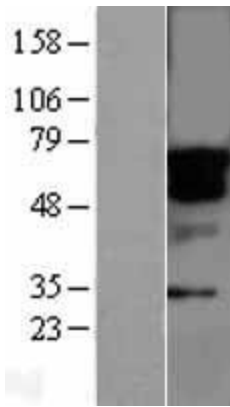
**UniProt ID:** [Q9BYT3](#)

**Cytogenetics:** 11p15.4  
**Protein Families:** Druggable Genome, Protein Kinase  
**MW:** 57.9 kDa  
**Gene Summary:** Serine/threonine protein kinase which phosphorylates VIME. May play a specific role in the dynamic behavior of the intermediate filament cytoskeleton by phosphorylation of VIME (By similarity). Not essential for the survival of KRAS-dependent AML cell lines.[UniProtKB/Swiss-Prot Function]

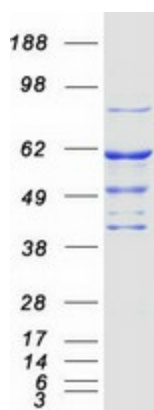
**Product images:**



Circular map for RC206910



Western blot validation of overexpression lysate (Cat# [LY403089]) using anti-DDK antibody (Cat# [TA50011-100]). Left: Cell lysates from untransfected HEK293T cells; Right: Cell lysates from HEK293T cells transfected with RC206910 using transfection reagent MegaTran 2.0 (Cat# [TT210002]).



Coomassie blue staining of purified STK33 protein (Cat# [TP306910]). The protein was produced from HEK293T cells transfected with STK33 cDNA clone (Cat# RC206910) using MegaTran 2.0 (Cat# [TT210002]).