

Product datasheet for **RC206909**

CDRL2 (CDR2L) (NM_014603) Human Tagged ORF Clone

Product data:

Product Type:	Expression Plasmids
Product Name:	CDRL2 (CDR2L) (NM_014603) Human Tagged ORF Clone
Tag:	Myc-DDK
Symbol:	CDRL2
Synonyms:	HUMPPA
Mammalian Cell Selection:	Neomycin
Vector:	pCMV6-Entry (PS100001)
E. coli Selection:	Kanamycin (25 ug/mL)



[View online »](#)

ORF Nucleotide Sequence:

>RC206909 representing NM_014603
 Red=Cloning site Blue=ORF Green=Tags(s)

TTTTGTAATACGACTCACTATAGGGCGGCCGGGAATTCGTCGACTGGATCCGGTACCGAGGAGATCTGCC
 GCC**CGATCGCC**

ATCGCGAGAGCCCGGGATGGAGGACTTCTCCGCGGAGGAAGAGGAGTCTGGTACGACCAGCAGGACC
 TGGAGCAGGACTTGCACCTAGCTGCGGAGCTGGGGAAGACTCTGCTGGAGAGGAACAAGGAGCTGGAGGG
 GTCCTTGCAGCAGATGTACTCCACCAATGAGGAACAGGTGCAGGAGATCGAGTACCTAACCAAGCAGCTG
 GACACGCTGCGGCACGTGAACGAGCAGCAGCCAAAGTCTATGAGCAGCTGGACCTGACAGCCCGGGACC
 TGGAGCTGACCAACCACAGGCTGGTGTGGAGAGTAAGGCTGCCAGCAGAAGATCCATGGGCTGACGGA
 GACCATGAGCGCTCCAGGCTCAGGTGGAGGAGTGCAGGCCAGGTGGAGCAACTGAGAGGCCTGGAA
 CAGCTGCGAGTGTCCGGGAGAAGCGGGAACGCAGGCGTACCATCCACACCTTCCCCTGCCTCAAGGAGC
 TGTGCACCAGCCCCGGTCAAGGATGCTTCCGCCTACACAGTTCCTCCCTGGAGCTGGCCCCGGGCC
 CCTGGAGCAGGAGAACGAGCGGCTGCAGACCCTGGTGGGGCGCTGCGCTCCCAGGTGAGCCAGGAGCGG
 CAGCGCAAGGAGCGGGCGGAGCGGAGTACACCGCGGTGCTGCAGGAGTACTCGGAGCTGGAGCGCCAGC
 TGTGCGAGATGGAGGCCTGTCGCTGCGTGTGCAGGAGCTGGAGGCCGAGCTGCTGGAGCTGCAGCAGAT
 GAAGCAGGCCAAGACCTACCTACTGGTCCGGACGACCACCTGGCCGAGGCCCTGCTCGCACCCCTCACG
 CAGGCCCTGAGGCCGACGATCCCCAGCCCGGCCGCGGGACGACTTGGGCGCCAGGACGGGGTCTCCT
 CACCGGCAGCCTCTCCAGGCCACGTGGTGCGAAGAGCTGCAGCGACACTGCGCTCAACGCCATCGTGCC
 CAAAGACCCAGCCAGCCGGCACGCGGGCAACCTCACACTGCACGCCAACAGCGTGCAGAGCGGGGATG
 TCCATCTGCGGGAGGTGGACGACGAGTACCACGCGTGTGGAGAAGTACGAGGAGCTGCTGAGCAAGT
 GCCGGCAGCACGGGGCCGAGTGCAGCACGCGCGTGCAGACCTCGCGCCCCATCTCCGGGACAGCTC
 GTGGAGGACCTGCGCGGGGTGAGGAGGGCCAGGGTGAAGTCAAGGCAGGAGAGAAGAGCCTGAGCCAG
 CACGTGGAGGCCGTGGACAAGCGCTGGAACAGAGCCAGCCGAGTACAAGGCGCTCTTCAAAGAGATCT
 TCTCCAGGATCCAGAAGACCAAGGCTGACATCAACGCCACCAAAGTCAAGACGCACAGCAGCAAG

ACGCGTACGCGGCCGCTCGAGCAGAACTCATCTCAGAAGAGGATCTGGCAGCAAATGATATCCTGGATT
 ACAAGGATGACGACGATAAGGTTTAA

Protein Sequence:

>RC206909 representing NM_014603
 Red=Cloning site Green=Tags(s)

MRRAAGMEDFSAEEEESWYDQDLEQDLHLAAELGKTLLELNKELEGLLQMYSTNEEQVQIEIYLTKQL
 DTLRHVNEQHAKVYEQDLDTARDLEL TNHRLVLESKAAQQKIHL TETIERLQAQVEELQAQVEQLRGL
 QLRVLEKRRERRRTHFTPLKELCTSPRCKDAFRLHSSLELGPRLPQENERLQTLVGALRSQVSQER
 QRKERAEREYTAVLQEYSELERQLCEMEACRLRVQELEAELELQMKQAKTYLLGPDDHLAEALLAPLT
 QAPEADDPQPRGDDLGAQDGVSSPAASPGHVVRKSCSDTALNAIVAKDPASRHAGNLT LHANSVRKRG
 SILREVDEQYHALLEKYEELL SKCRQHAGVVRHAGVQTSRPI SRDSSWRDLRGEEGQGEVKAGEKLSLQ
 HVEAVDKRLEQSQPEYKALFKEIFSRIQTKADINATKVKTHSSK

TRTRPLEQKLISEEDLAANDILDYKDDDDKV

Chromatograms:

https://cdn.origene.com/chromatograms/mg3588_d01.zip

Restriction Sites:

Sgfl-Mlul

Cloning Scheme:


ACCN: NM_014603

ORF Size: 1395 bp

OTI Disclaimer: The molecular sequence of this clone aligns with the gene accession number as a point of reference only. However, individual transcript sequences of the same gene can differ through naturally occurring variations (e.g. polymorphisms), each with its own valid existence. This clone is substantially in agreement with the reference, but a complete review of all prevailing variants is recommended prior to use. [More info](#)

OTI Annotation: This clone was engineered to express the complete ORF with an expression tag. Expression varies depending on the nature of the gene.

Components: The ORF clone is ion-exchange column purified and shipped in a 2D barcoded Matrix tube containing 10ug of transfection-ready, dried plasmid DNA (reconstitute with 100 ul of water).

Reconstitution Method:

1. Centrifuge at 5,000xg for 5min.
2. Carefully open the tube and add 100ul of sterile water to dissolve the DNA.
3. Close the tube and incubate for 10 minutes at room temperature.
4. Briefly vortex the tube and then do a quick spin (less than 5000xg) to concentrate the liquid at the bottom.
5. Store the suspended plasmid at -20°C. The DNA is stable for at least one year from date of shipping when stored at -20°C.

Note: Plasmids are not sterile. For experiments where strict sterility is required, filtration with 0.22um filter is required.

RefSeq: [NM_014603.3](#)

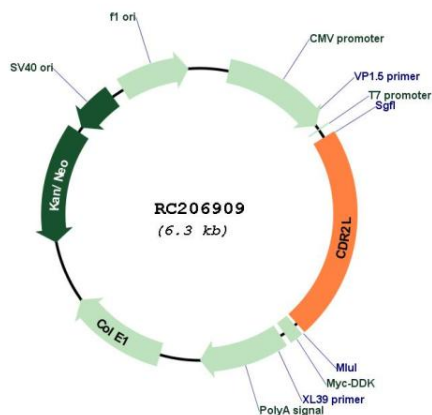
RefSeq Size: 3546 bp

RefSeq ORF: 1398 bp

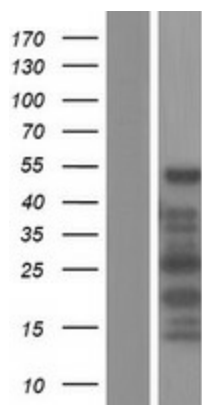
Locus ID: 30850

UniProt ID: [Q86X02](#)
 Cytogenetics: 17q25.1
 MW: 52.8 kDa

Product images:



Circular map for RC206909



Western blot validation of overexpression lysate (Cat# [LY415158]) using anti-DDK antibody (Cat# [TA50011-100]). Left: Cell lysates from untransfected HEK293T cells; Right: Cell lysates from HEK293T cells transfected with RC206909 using transfection reagent MegaTran 2.0 (Cat# [TT210002]).