

Product datasheet for **RC206906**

SRFBP1 (NM_152546) Human Tagged ORF Clone

Product data:

Product Type:	Expression Plasmids
Product Name:	SRFBP1 (NM_152546) Human Tagged ORF Clone
Tag:	Myc-DDK
Symbol:	SRFBP1
Synonyms:	BUD22; P49; p49/STRAP; Rib1; STRAP
Mammalian Cell Selection:	Neomycin
Vector:	pCMV6-Entry (PS100001)
E. coli Selection:	Kanamycin (25 ug/mL)



[View online »](#)

ORF Nucleotide Sequence:

>RC206906 ORF sequence
 Red=Cloning site Blue=ORF Green=Tags(s)

TTTTGTAATACGACTCACTATAGGGCGGCCGGAATTCGTCGACTGGATCCGGTACCGAGGAGATCTGCC
 GCC**GCGATCGCC**

ATGGCTCAGCCGGAACCTGAACCTCAATAACGAGGTTGTGAAGATGAGAAAAGAAGTGAAGAGAATTC
 GAGTTTTAGTTATCCGAAAACCTGTGAGGAGTGTGGCCGACTGAAGTCAAAAAAGGACTGAAGATGC
 ACTGTTAAAAAACCAAAGACGGGCGCAAAGATTGCTTGAAGAAATCCATGCCATGAAGGAATTGAAACCT
 GACATAGTAACTAACTGCTCTTGGTGTGATATCAACTTTGAAAAATCTTCAAAAAGCCAGATTCTA
 CTGCAACTGAAAGAGCAATTGCCAGACTAGCAGTACATCTCTTCTGAAGAAAAAGATAGATGTGCTAAA
 AGCTGTGTACAAGCCTTAAAGAAGCAAGACAAAATGTTGCTGAAGTTGAGTCATCAAAGAATGCTTCA
 GAGGACAATCATTCTGAGAATACTTTGTATTCAAATGATAATGGAAGTATTTACAGCGTGAAGCAACTG
 TCATCAGTGAGCAAAAAGTCAAAGAAACAAAATATTGGCGAAGAAACCAATACATAATTCAAAGGAAAA
 AATAGCAAAGATGGAACATGGACCTAAAGCAGTACTATTGCAAATTCCTCATCAAAGCCTTCAGAAAAG
 GATTCTGTAGTTCCCTTGAGTCCAGAACACTGCTGACCCAAAACCTGAAAACCTCTAAGTCAAACCA
 AAAAAACAAAGGATCTGATAGCTCACTCTCTGGTAACAGTGTGGCGGAGAAAGATTTTGTGAAGAGGA
 GAAGGAATATTTTGTGATAGCACAGAAGAAAGTTTTACAAGCAGTCTCCATGTCTGAAGATAGTGAT
 AGCGGTGACGACTTCTTATTGGGAAAGTCAGACGGACACGAAAGAAGGAAAGTAGTTGTCTATTCTTCAG
 TTAAGGAACAAAAACCTAGAAAAAGTGTCTTAAAGAAGATACAGGTGAAACTCATGGGGATACAAG
 AAATGACAAAATCAAGCAAGTACAGAAACCAGAAAGTTAGAATCAGTGTTCCTACTTTTATCTGGA
 TCTAAAAGCTCTAGAAGAAATTTCAAAGAACAGGCTCCAAAACAAGATCCCTAGATTTCCACAGAATG
 AGCCTCAGATCAAGAATCAGTTTAAAGAAGCTATCAGGAAGACTTGAAAATACAAAACAGCAATTGCA
 GCTGCCTTTCATCCTTATGGGAAGCAAGCAGAAAGCGAAAAGAACAGCAATCTAATATTGCTGTGTTT
 CAGGGGAAAAAATTACGTTTGTGATGAT

ACGCGTACGCGGCCGCTCGAGCAGAAACTCATCTCAGAAGAGGATCTGGCAGCAAATGATATCCTGGATT
 ACAAGGATGACGACGATAAGGTTTAA

Protein Sequence:

>RC206906 protein sequence
 Red=Cloning site Green=Tags(s)

MAQPGTLNLNNEVVKMRKEVKRIRVLVIRKLVRSVGRLLKSKKGTEDALLKNQRRARLLEEIHAMKELKP
 DIVTKSALGDDINFEKIFKPKDSTATERIARLAVHPLLKKKIDVLKAAVQAFKEARQNVAEVSSKNAS
 EDNHSENTLYSNDNGSNLQREATVISEQVKETKILAKKPIHNSKEKIAKMEHGPKAVTIANSKPKSEK
 DSVVLSLESQKTPADPKLKTLSQTKKNKGSDDLGNSDGGEEFCHEEKEYFDDSTEERFYKQSSMSDSD
 SGDDFFIGKVRRTTRKKESSCHSSVKEQKPLEKVFLEKEDTGETHGDTRNDKIKPSTETRKLESVFFHSLSG
 SKSSRRNFKEQAPKTRSLDFPQNEPQIKNQFNKKLSGRLENTKQQLQLPLHPSWEASRRRKEQSSNIAVF
 QGKKITFDD

TRTRPLEQKLISEEDLAANDILDYKDDDDKV

Chromatograms:

https://cdn.origene.com/chromatograms/mk6533_b11.zip

Restriction Sites:

Sgfl-Mlul

Cloning Scheme:


ACCN: NM_152546

ORF Size: 1287 bp

OTI Disclaimer: The molecular sequence of this clone aligns with the gene accession number as a point of reference only. However, individual transcript sequences of the same gene can differ through naturally occurring variations (e.g. polymorphisms), each with its own valid existence. This clone is substantially in agreement with the reference, but a complete review of all prevailing variants is recommended prior to use. [More info](#)

OTI Annotation: This clone was engineered to express the complete ORF with an expression tag. Expression varies depending on the nature of the gene.

Components: The ORF clone is ion-exchange column purified and shipped in a 2D barcoded Matrix tube containing 10ug of transfection-ready, dried plasmid DNA (reconstitute with 100 ul of water).

Reconstitution Method:

1. Centrifuge at 5,000xg for 5min.
2. Carefully open the tube and add 100ul of sterile water to dissolve the DNA.
3. Close the tube and incubate for 10 minutes at room temperature.
4. Briefly vortex the tube and then do a quick spin (less than 5000xg) to concentrate the liquid at the bottom.
5. Store the suspended plasmid at -20°C. The DNA is stable for at least one year from date of shipping when stored at -20°C.

RefSeq: [NM_152546.3](#)

RefSeq Size: 2836 bp

RefSeq ORF: 1290 bp

Locus ID: 153443

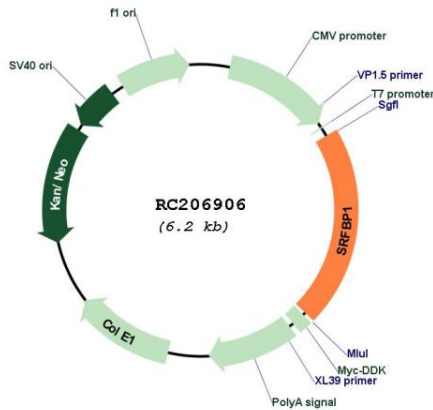
UniProt ID: [Q8NEF9](#)

Cytogenetics: 5q23.1

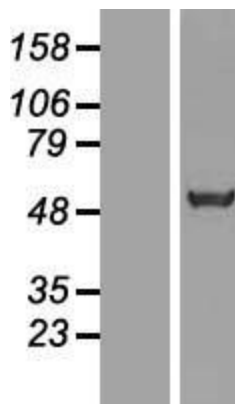
MW: 48.6 kDa

Gene Summary: May be involved in regulating transcriptional activation of cardiac genes during the aging process. May play a role in biosynthesis and/or processing of SLC2A4 in adipose cells (By similarity).[UniProtKB/Swiss-Prot Function]

Product images:



Circular map for RC206906



Western blot validation of overexpression lysate (Cat# [LY407457]) using anti-DDK antibody (Cat# [TA50011-100]). Left: Cell lysates from untransfected HEK293T cells; Right: Cell lysates from HEK293T cells transfected with RC206906 using transfection reagent MegaTran 2.0 (Cat# [TT210002]).