

Product datasheet for **RC206904**

FAM126B (NM_173822) Human Tagged ORF Clone

Product data:

Product Type:	Expression Plasmids
Product Name:	FAM126B (NM_173822) Human Tagged ORF Clone
Tag:	Myc-DDK
Symbol:	FAM126B
Synonyms:	HYCC2
Mammalian Cell Selection:	Neomycin
Vector:	pCMV6-Entry (PS100001)
E. coli Selection:	Kanamycin (25 ug/mL)



[View online »](#)

ORF Nucleotide Sequence:

>RC206904 ORF sequence
 Red=Cloning site Blue=ORF Green=Tags(s)

TTTTGTAATACGACTCACTATAGGGCGGCCGGAATTCGTCGACTGGATCCGGTACCGAGGAGATCTGCC
 GCC**CGCATCGCC**

ATGCTGGGAAGTACCGTTGTGTGTGGGAAGAATGGTTATCAGAATTCAGGCATTACCTGACACTCAGA
 TCACCAGTTATGCAGCACTTTACACCGAAAAAAACACTTGTACCAGCCCTCTATAAAGTTATTCAAGA
 TTCAAATAATGAGCTCCTGGAGCCTGTCTGCCATCAGCTGTTTGAGCTCTATCGTAGCTCAGAGGTTTGA
 CTTAAGAGGTTACACTGCAGTCTTGCCAGAATTGATGTGGGTTTATTTACGGCTTACAGTTAGCCGAG
 ACAGACAGAGTAATGGTTGCATTGAAGCACTTCTGTTAGGAATTTACAATTTGGAAATCGCTGATAAAGA
 TGGGAACAATAAAGTTCTGTCTTTCACTATCCCCTCCTTATCCAAGCCTCAATATACCATGAACCTTCA
 ACAATTGGATCCATGGCTTTGACAGAAGGGCATTGTGTCAGCATGATCTCATCAGAGTTGTTTATAGTG
 ATCTTCATCCTCAGAGGAAACATTCAGTGCACAGAACCGGTTTGAAGTCTGAGTTTCTCATGCTGTG
 TTATAATTCTGCTATTGTATATATGCCTGCCTCATTTACCAATCTCTTGTGCGGATGGGTTCCAGGGTT
 TGTGTGAGTGGCTTTCCACGGCAACATGAAAAACTGGAAAGAACTCTGTGGTGAATAGTATTGGATC
 CTGAATTTATGGTGCAACTTCTCACAGGGGTTTATTATGCCATGTATAATGGACAGTGGGACCTTGCCA
 GGAAGTCTTGATGATATCATTATAGAGCCAGCTAGAGCTTTTTTCTCAACCACTATTGGTTGCCAAT
 GCCATGAAAAACTCATTACCATTGATGCTCCTGATTCTACACAAGAAGGCCAGAAAGTCCTTAAAGTTG
 AAGTCACTCCAACAGTCCGAGGATTTCTCGACTGCAATTACAACAGCTTCAATCCGTCGTCATAGATG
 GAGAAGAGAAGGTGCTGAGGGTGTAAATGGAGGAGAGGAGTCTGTAACCTGAATGATGCAGATGAAGGA
 TTTTCATCAGGGGCTTCCCTCAGCAGTCAGCCAATTGGGACCAACCATCCTCCTTCTCAGAGGGGAA
 GCTTAAGGAAAGTAGCAACTGGCGCTTACGCCAAGGATAAAGAAACAGCCTCTGCCATCAATCCAGTGA
 GAGCCCTCGAGATTGAGTTCGCAAGCAGTATGTACAGCAACCAACTGATCTTAGTGTAGATTGAGTT
 GAGCTGACACCAATGAAGAAACCTGAGCCTGCCTGCTGGCCAGGTGGTGCACAAAAATCAATAGCTTAA
 GTCTAATCCGGACAGCCAGTCTTCTCAAGTAAATCATTGACTATGTAATGGCAGTCAAGCAAGTAC
 CAGCATTGGGGTTGGCACTGAGGGAGGTAATTTAGCAGCCAACAATGCTAATCGATACTCAACTGTC
 AGTCTGCAGGAAGACCGGCTAGGTCAAGCTGGCGAAGGTAAGAGCTCCTCAGCCAGGAGCCCCCTTGA
 CCAAGCAGTCTCGATCCCAAGTTTCAATATGCAGCTAATATCCAGGTG

ACGCGTACGCGGCCGCTCGAGCAGAAACTCATCTCAGAAGAGGATCTGGCAGCAAATGATATCCTGGATT
 ACAAGGATGACGACGATAAGGTTTAA

Protein Sequence:

>RC206904 protein sequence
 Red=Cloning site Green=Tags(s)

MLGTDRCVVEEWLSEFKALPDTQITSYAATLHRKKTLPALYKVIQDSNNELLEPVCHQLFELYRSSEVR
 LKRFTLQFLPELMWVYLRLTVSRDRQSNGCIEALLLGIYNLEIADKDGNNKVLFSFTIPSLKPSIYHEPS
 TIGSMALTEGALCQHDLIRVVYSDLHPQRETFTAQNRFEVLSFLMLCYNSAIVYMPASSYQSLCRMGRV
 CVSGFPRQHEKHWKELCGRIVLDPEFMVQLLTGVYAMYNGQWDLGQEVLDIIYRAQLELFSQPLLVAN
 AMKNSLPFDAPDSTQEGQKVLKVEVTPVPRISRTAITTASIRRHRRWREGAEGVNGGEESVNLNDADEG
 FSSGASLSSQPIGTKPSSSSQRGSLRKVATGRSAKDKETASAIKSSESPRDSVVRKQYVQPTDLSVDSV
 ELTPMKKHLPLPAGQVVPKINSLSLIRTASASSSKSFDYVNGSQASTSIGVGTGGTNLAANNANRYSTV
 SLQEDRLGQAGEGKELLSPGAPLTKQSRSPSFMQLISQV

TRTRPLEQKLISEEDLAANDILDYKDDDDKV

Chromatograms:

https://cdn.origene.com/chromatograms/mk6321_g03.zip

Restriction Sites:

Sgfl-MluI

Cloning Scheme:


ACCN: NM_173822

ORF Size: 1590 bp

OTI Disclaimer: The molecular sequence of this clone aligns with the gene accession number as a point of reference only. However, individual transcript sequences of the same gene can differ through naturally occurring variations (e.g. polymorphisms), each with its own valid existence. This clone is substantially in agreement with the reference, but a complete review of all prevailing variants is recommended prior to use. [More info](#)

OTI Annotation: This clone was engineered to express the complete ORF with an expression tag. Expression varies depending on the nature of the gene.

Components: The ORF clone is ion-exchange column purified and shipped in a 2D barcoded Matrix tube containing 10ug of transfection-ready, dried plasmid DNA (reconstitute with 100 ul of water).

- Reconstitution Method:**
1. Centrifuge at 5,000xg for 5min.
 2. Carefully open the tube and add 100ul of sterile water to dissolve the DNA.
 3. Close the tube and incubate for 10 minutes at room temperature.
 4. Briefly vortex the tube and then do a quick spin (less than 5000xg) to concentrate the liquid at the bottom.
 5. Store the suspended plasmid at -20°C. The DNA is stable for at least one year from date of shipping when stored at -20°C.

RefSeq: [NM_173822.2](#)

RefSeq Size: 9348 bp

RefSeq ORF: 1593 bp

Locus ID: 285172

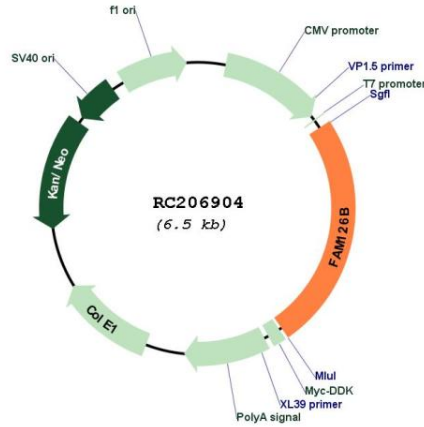
UniProt ID: [Q8IXS8](#)

Cytogenetics: 2q33.1

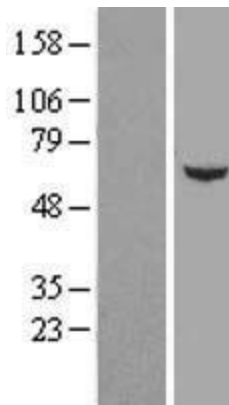
MW: 58.6 kDa

Gene Summary: Component of a complex required to localize phosphatidylinositol 4-kinase (PI4K) to the plasma membrane.[UniProtKB/Swiss-Prot Function]

Product images:



Circular map for RC206904



Western blot validation of overexpression lysate (Cat# [LY406428]) using anti-DDK antibody (Cat# [TA50011-100]). Left: Cell lysates from untransfected HEK293T cells; Right: Cell lysates from HEK293T cells transfected with RC206904 using transfection reagent MegaTran 2.0 (Cat# [TT210002]).



Coomassie blue staining of purified FAM126B protein (Cat# [TP306904]). The protein was produced from HEK293T cells transfected with FAM126B cDNA clone (Cat# RC206904) using MegaTran 2.0 (Cat# [TT210002]).