

Product datasheet for RC206902

CALHM1 (NM_001001412) Human Tagged ORF Clone

Product data:

Product Type:	Expression Plasmids
Product Name:	CALHM1 (NM_001001412) Human Tagged ORF Clone
Tag:	Myc-DDK
Symbol:	CALHM1
Synonyms:	FAM26C
Mammalian Cell Selection:	Neomycin
Vector:	pCMV6-Entry (PS100001)
E. coli Selection:	Kanamycin (25 ug/mL)
ORF Nucleotide Sequence:	>RC206902 ORF sequence Red=Cloning site Blue=ORF Green=Tags(s)

TTTTGTAATACGACTCACTATAGGGCGCCGGGAATTCGTCGACTGGATCCGGTACCGAGGAGATCTGCC
GCC**CGATCGCC**

ATGATGGACAAGTTCGGATGATCTTCCAGTTCCTGCAGTCCAACCAGGAGTCCTTCATGAATGGCATCT
GTGGCATCATGGCCCTGGCCAGTGCCAGATGACTCGGCCTTCGACTTCAACTGCCCTGCCTGCCGG
CTACAATGCGGCCTACAGCGGGCATCCTGCTGGCGCCACCCCTGGTGTCTTTCTGCTTGGCCTGGT
ATGAACAACAACGTGTCCATGCTGGCCGAAGAGTGGAAGCGGCCACCGGGCCGGCCGCAAGACCCCG
CTGTGTTGCGCTACATGTTCTGCTCCATGGCCAGCGCCCTCATCGCGCTGTGCTGCGGTGGCCGT
CAGCCTACTCGACGGCAAATGCTTCCTCTGTGCCTTCTGCACTGCCGTGCCCGTAGCGCACTGGGCAAC
GGCAGCCTGGCACCCGGCCTTCTGCCCCGAGCTCGCCCGCCTGCTGGCCCGGGTGCCTGCCCTGAGA
TCTACGATGGCGACTGGCTGTTGGCCCGAGAGGTGGCCGTGCGTTACCTCCGCTGCATCTCCAGGCGCT
GGGCTGGTCTTCTGCTGCTGACCACTCTGCTGGCATTCTGTTGCGCTCTGTGCGGCCCTGCTTACG
CAGGCCGCTTCTCAAGAGCAAGTACTGGTCCCACTATATCGACATCGAGCGCAAGCTCTTCGACGAGA
CGTGCACGGAGCACGCCAAAGCCTTTGCCAAGGTCTGCATCCAGCAGTCTTCGAGGCCATGAACCATGA
CCTGGAGCTGGGTACACCAACGGGACTGGCCACGGCCCTGCTTCCGAGCTGCCCCACGACCCCG
GATGGTCCGAGGAGGAAAGGAGAAGCTGCGTGGCATCACGGATCAAGGCACCATGAACAGGCTGCTCA
CGAGCTGGCACAAATGCAAACCGCCTCTGCGGCTGGGCCAGGAGGCCACCGCTGATGGCAACGGCTG
GGCTGGGGTGGGCCCGCCTCCGCGTAAGGAGGTGGCCACCTACTTCAGCAAAGTG

ACGCGTACGCGGCCGCTCGAGCAGAACTCATCTCAGAAGAGGATCTGGCAGCAAATGATATCCTGGATT
ACAAGGATGACGACGATAAGGTTTAA



[View online »](#)

Protein Sequence: >RC206902 protein sequence
Red=Cloning site Green=Tags(s)

MMDKFRMIFQFLQSNQESFMNGICGIMALASAQMYSADFNCPCPLPGYNAAYSAGILLAPPLVFLGLV
MNNVSMMLAEWKRPPGRRAKDPAVLRVMFCMSMAQRAL IAPVVVAVTLLDGKCF LCAFCTAVPVSALGN
GSLAPGLPAPELARLLARVPCPEIYDGDWLLAREVAVRYLRCSIQALGWSFVLLTLLAFVVRVSRPCFT
QAAF LKSKYWSHYIDIERKLFDETCTEHAKAFKVCIQQFFEAMNHDLELGHTNGTLATAPASAAAPTTP
DGAEEEREKLRGITDQGTMRLLTSWHKCKPPLRLGQEEPPLMGNWAGGPRPRRKEVATYFSKV

TRTRPLEQKLISEEDLAANDILDYKDDDDKV

Chromatograms: https://cdn.origene.com/chromatograms/mk6533_c12.zip

Restriction Sites: SgfI-MluI

Cloning Scheme:

Cloning sites used for ORF Shuttling:



* The last codon before the Stop codon of the ORF

ACCN: NM_001001412

ORF Size: 1038 bp

OTI Disclaimer: The molecular sequence of this clone aligns with the gene accession number as a point of reference only. However, individual transcript sequences of the same gene can differ through naturally occurring variations (e.g. polymorphisms), each with its own valid existence. This clone is substantially in agreement with the reference, but a complete review of all prevailing variants is recommended prior to use. [More info](#)

OTI Annotation: This clone was engineered to express the complete ORF with an expression tag. Expression varies depending on the nature of the gene.

Components: The ORF clone is ion-exchange column purified and shipped in a 2D barcoded Matrix tube containing 10ug of transfection-ready, dried plasmid DNA (reconstitute with 100 ul of water).

Reconstitution Method:

1. Centrifuge at 5,000xg for 5min.
2. Carefully open the tube and add 100ul of sterile water to dissolve the DNA.
3. Close the tube and incubate for 10 minutes at room temperature.
4. Briefly vortex the tube and then do a quick spin (less than 5000xg) to concentrate the liquid at the bottom.
5. Store the suspended plasmid at -20°C. The DNA is stable for at least one year from date of shipping when stored at -20°C.

Note: Plasmids are not sterile. For experiments where strict sterility is required, filtration with 0.22um filter is required.

RefSeq: [NM_001001412.1](#), [NP_001001412.1](#)

RefSeq Size: 3056 bp

RefSeq ORF: 1041 bp

Locus ID: 255022

UniProt ID: [Q8IU99](#)

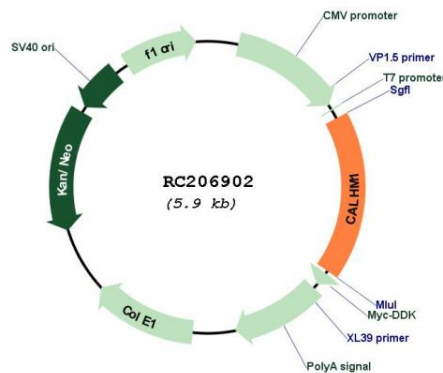
Cytogenetics: 10q24.33

Protein Families: Transmembrane

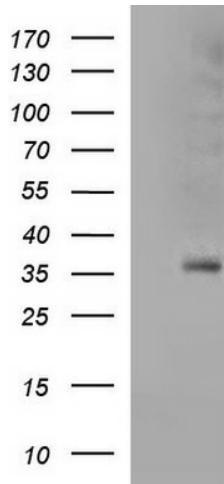
MW: 38.2 kDa

Gene Summary: This gene encodes a calcium channel that plays a role in processing of amyloid-beta precursor protein. A polymorphism at this locus has been reported to be associated with susceptibility to late-onset Alzheimer's disease in some populations, but the pathogenicity of this polymorphism is unclear.[provided by RefSeq, Mar 2010]

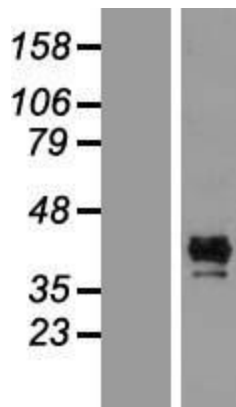
Product images:



Circular map for RC206902



HEK293T cells were transfected with the pCMV6-ENTRY control (Cat# [PS100001], Left lane) or pCMV6-ENTRY CALHM1 (Cat# RC206902, Right lane) cDNA for 48 hrs and lysed. Equivalent amounts of cell lysates (5 ug per lane) were separated by SDS-PAGE and immunoblotted with anti-CALHM1(Cat# [TA590770]). Positive lysates [LY424341] (100ug) and [LC424341] (20ug) can be purchased separately from OriGene.



Western blot validation of overexpression lysate (Cat# [LY424341]) using anti-DDK antibody (Cat# [TA50011-100]). Left: Cell lysates from untransfected HEK293T cells; Right: Cell lysates from HEK293T cells transfected with RC206902 using transfection reagent MegaTran 2.0 (Cat# [TT210002]).