

## Product datasheet for **RC206899**

### **FAM177A1 (NM\_001079519) Human Tagged ORF Clone**

#### Product data:

Product Type:	Expression Plasmids
Product Name:	FAM177A1 (NM_001079519) Human Tagged ORF Clone
Tag:	Myc-DDK
Symbol:	FAM177A1
Synonyms:	C14orf24
Mammalian Cell Selection:	Neomycin
Vector:	pCMV6-Entry (PS100001)
E. coli Selection:	Kanamycin (25 ug/mL)
ORF Nucleotide Sequence:	>RC206899 ORF sequence Red=Cloning site Blue=ORF Green=Tags(s)

TTTTGTAATACGACTCACTATAGGGCGGCCGGAATTCGTCGACTGGATCCGGTACCGAGGAGATCTGCC  
GCC**CGATCGCC**

ATGGACCAGGAGCCAGTGGGCGGTGTGGAACGAGGAGAAGCCGTCGCAGCCTCGGGAGCTGCGGCCCGC  
CGGCATTCGGGGAATCTGCAGGGCAGATGAGTAACGAAAGAGGCTTTGAAAATGTAGAACTGGGAGTCAT  
AGGAAAAAGAAGAAAGTCCAAGGAGAGTCATCCACTTGTAGTGGTAAACAATGGAAGAATATAGC  
ACAGATGAAGACGAAGTTGATGGCCTGGAGAAGAAAGATGTTTTGCCTACTGTTGATCCGACAAACTTA  
CCTGGGGTCCCTACTTATGGTTTTACATGCTTCGGGCTGCTACATCAACTCTCTCAGTGTGTGACTTCCT  
TGGAGAGAAGATTGCATCTGTTTTGGGTATCAGCACCCCAAGTACCAATATGCCATTGATGAATATTAT  
CGGATGAAGAAGGAGGAAGAAGAAGAAGAAGAAAACAGGATGTCTGAAGAAGCAGAAAAACAATATC  
AACAGAATAAATTGCAGACTGATTCCATTGTTCCAGACAGATCAACCAGAGACAGTGATATCCAGCTCATT  
TGTGAATGTCAATTTTGAATGGAGGGAGACAGTGAAGTAATTATGAAAAGCAAGCAAAATCCAGTCTCT  
GTCCCACCA

**ACGCGT**ACGCGGCCGCTCGAGCAGAACTCATCTCAGAAGAGGATCTGGCAGCAATGATATCCTGGATT  
ACAAGGATGACGACGATAAGGTTTAA



[View online »](#)

**Protein Sequence:** >RC206899 protein sequence  
Red=Cloning site Green=Tags(s)

MDQEPVGGVERGEAVAASGAAAAAFGESAGQMSNERGFENVELGVIGKKKKVPRRVIHFVSGETMEEYS  
 TDEDEVGLEKKDVLPTVDPTKL TWGPYLW FYMLRAATSTLSVCDLGEKIASVLGISTPKYQYAIDEYY  
 RMKKEEEEEENRMSEEA EKQYQNKLQTD SIVQTDQPETVISSSFVNVNFEMEGDSEVIMESKQNPVS  
 VPP

TRTRPLEQKLISEEDLAANDILDYKDDDDKV

**Chromatograms:** [https://cdn.origene.com/chromatograms/mk6321\\_g08.zip](https://cdn.origene.com/chromatograms/mk6321_g08.zip)

**Restriction Sites:** SgfI-MluI

**Cloning Scheme:**



**ACCN:** NM\_001079519

**ORF Size:** 639 bp

**OTI Disclaimer:** The molecular sequence of this clone aligns with the gene accession number as a point of reference only. However, individual transcript sequences of the same gene can differ through naturally occurring variations (e.g. polymorphisms), each with its own valid existence. This clone is substantially in agreement with the reference, but a complete review of all prevailing variants is recommended prior to use. [More info](#)

**OTI Annotation:** This clone was engineered to express the complete ORF with an expression tag. Expression varies depending on the nature of the gene.

**Components:** The ORF clone is ion-exchange column purified and shipped in a 2D barcoded Matrix tube containing 10ug of transfection-ready, dried plasmid DNA (reconstitute with 100 ul of water).

**Reconstitution Method:**

1. Centrifuge at 5,000xg for 5min.
2. Carefully open the tube and add 100ul of sterile water to dissolve the DNA.
3. Close the tube and incubate for 10 minutes at room temperature.
4. Briefly vortex the tube and then do a quick spin (less than 5000xg) to concentrate the liquid at the bottom.
5. Store the suspended plasmid at -20°C. The DNA is stable for at least one year from date of shipping when stored at -20°C.

**RefSeq:** [NM\\_001079519.1](#), [NP\\_001072987.1](#)

**RefSeq Size:** 3276 bp

**RefSeq ORF:** 642 bp

**Locus ID:** 283635

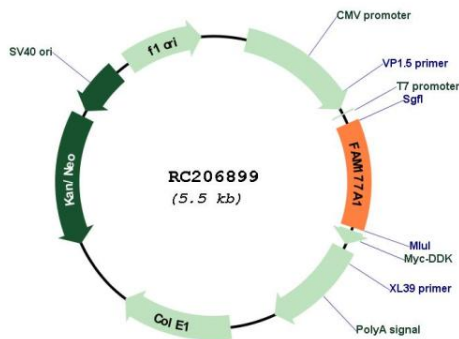
**UniProt ID:** [Q8N128](#)

**Cytogenetics:** 14q13.2

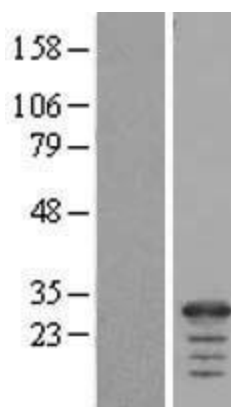
**MW:** 23.8 kDa

**Gene Summary:** This gene encodes a member of a conserved protein family. Alternative splicing results in multiple transcript variants. This gene is thought to be associated with susceptibility to juvenile idiopathic arthritis. [provided by RefSeq, Apr 2017]

**Product images:**



Circular map for RC206899



Western blot validation of overexpression lysate (Cat# [LY421510]) using anti-DDK antibody (Cat# [TA50011-100]). Left: Cell lysates from untransfected HEK293T cells; Right: Cell lysates from HEK293T cells transfected with RC206899 using transfection reagent MegaTran 2.0 (Cat# [TT210002]).