

Product datasheet for **RC206897**

Ubiquilin (UBQLN1) (NM_013438) Human Tagged ORF Clone

Product data:

Product Type:	Expression Plasmids
Product Name:	Ubiquilin (UBQLN1) (NM_013438) Human Tagged ORF Clone
Tag:	Myc-DDK
Symbol:	Ubiquilin
Synonyms:	DA41; DSK2; PLIC-1; UBQN; XDRP1
Mammalian Cell Selection:	Neomycin
Vector:	pCMV6-Entry (PS100001)
E. coli Selection:	Kanamycin (25 ug/mL)



[View online »](#)

ORF Nucleotide Sequence:

>RC206897 ORF sequence
 Red=Cloning site Blue=ORF Green=Tags(s)

TTTTGTAATACGACTCACTATAGGGCGGCCGGAATTCGTCGACTGGATCCGGTACCGAGGAGATCTGCC
 GCC**CGCATCGC**C

ATGGCCGAGAGTGGTGAAGCGGCGGTCTCCGGGCTCCAGGATAGCGCCGCGGAGCCGAAGGTGCTG
 GCACCCCGCGGCGCTGCCTCCGCGGAGCCAAAATCATGAAAGTCACCGTGAAGACCCGAAGGAAAA
 GGAGGAATTCGCCGTGCCGAGAATAGCTCCGTCCAGCAGTTTAAAGGAAGAAATCTCTAAACGTTTTAAA
 TCACATACTGACCAACTTGTGTTGATATTTGCTGGAAAAATTTGAAAGATCAAGATACCTTGAGTCAGC
 ATGGAATTCATGATGGACTTACTGTTACCTTGTCTATTAACACAAAACAGGCCTCAGGATCATTCAGC
 TCAGCAAAACAAATACAGCTGGAAGCAATGTTACTACATCATCAACTCCTAATAGTAACCTACATCTGGT
 TCTGCTACTAGCAACCTTTTGGTTTAGGTGGCCTTGGGGGACTTGCAGGTCTGAGTAGCTTGGGTTTGA
 ATACTACCAACTTCTCTGAACACAGAGTCAGATGCAGCGACAACCTTTGTCTAACCTGAAATGATGGT
 CCAGATCATGGAATCCCTTTGTTGAGCATGCTCTCAATCATGACCTGATGAGACAGTTAATTATG
 GCCAATCCACAAATGCAGCAGTTGATACAGAGAAATCCAGAAATAGTCATATGTTGAATAATCCAGATA
 TAATGAGACAAACGTTGGAACCTGCCAGGAATCCAGCAATGATGCAGGAGATGATGAGGAACCGAGCCG
 AGCTTTGAGCAACCTAGAAAGCATCCCAGGGGGATATAATGCTTTAAGGCGCATGTACACAGATATTCAG
 GAACCAATGCTGAGTGTGCACAAGAGCAGTTTGGTGGTAATCCATTTGCTTCCTTGGTGAGCAATACAT
 CCTCTGGTGAAGGTAGTCAACCTTCCCGTACAGAAAATAGAGATCCACTACCAATCCATGGGCTCCACA
 GACTTCCAGAGTTCATCAGCTTCCAGCGGCACTGCCAGCACTGTGGTGGCACTACTGGTAGTACTGCC
 AGTGGCACTTCTGGGCAGAGTACTACTGCGCCAAATTTGGTGCCTGGAGTAGGAGCTAGTATGTTCAACA
 CACAGGAATGCAGAGCTTGTGCAACAAATAACTGAAACCCACAACCTGATGCAAAACATGTTGTCTGC
 CCCCTACATGAGAAGCATGATGCAGTCACTGAGCCAGAATCCTGACCTTGTCTGCACAGATGATGCTGAAT
 AATCCCTATTTGCTGGAATCCTCAGCTTCAAGAACAAATGAGACAACAGCTCCCAACTTTCTCCAAC
 AAATGCAGAATCCTGATACACTATCAGCAATGTCAAACCTAGAGCAATGCAGGCCTTGTACAGATTCA
 GCAGGGTTTACAGACATTAGCAACGGAAGCCCCGGGCTCATCCAGGGTTTACTCCTGGCTTGGGGCA
 TTAGGAAGCACTGGAGGCTCTTCGGGAATAATGGATCTAACGCCACACCTAGTGAACACAAAGTCCCA
 CAGCAGGAACCACTGAACCTGGACATCAGCAGTTTATTAGCAGATGCTGCAGGCTTGTCTGGAGTAA
 TCCTCAGCTACAGAATCCAGAAGTCAGATTTAGCAACAACCTGGAACAACCTCAGTCAATGGGATTTTG
 AACCGTGAAGCAAACCTTGAAGCTCTAATAGCAACAGGAGGTGATATCAATGCAGCTATTGAAAGTTAC
 TGGGCTCCAGCCATCA

ACGCGTACGCGGCGGCTCGAGCAGAACTCATCTCAGAAGAGGATCTGGCAGCAATGATATCCTGGATT
 ACAAGGATGACGACGATAAGGTTTAA

Protein Sequence:

>RC206897 protein sequence
 Red=Cloning site Green=Tags(s)

MAESGESGGPPGSQDSAAGAEGAGTPAAAAAEPKIMKVTVKTPKEKEEFVAVPENSSVQQFKEEISKRFK
 SHTDQLVLIFAGKILKDQDTLSQHGIHDGLTVHLVIKTQNRPDHSAQQTNAGSNVTTSSPNSNSTSG
 SATSNPFLGGLGGLAGLSSGLNTTNFSELQSQMRQLLSNPEMMVQIMENPFVQSMLSNHDLMRQLIM
 ANPQMQLIQRNPEISHMLNNPDIMRQTLLEARNPAMMQEMMRNQDRALSNLESIPGGYNALRRMYTDIQ
 EPMLSAAQEQFGGNPFASLVSNTSSGEGSQPSRTENRDPLPNPWAPQTSQSSASSTASTVGGTTGSTA
 SGTSGQSTTAPNLVPGVGASMFNTPGMQSLQITENPQLMQNMLSAPYMRSMQSLSQNPDLAAQMMLN
 NPLFAGNPQLQEQRQLPTFLQMQNPDTLSAMSNPRAMQALLQIQQLQLATEAPGLIPGFTPLGLGA
 LGSTGSSSGTNGSNATPSENTSPTAGTTEPHQQFIQQLQALAGVNPQLQNPEVRFQQQLEQLSAMGFL
 NREANLQALIAATGGDINAAIERLLGSQPS

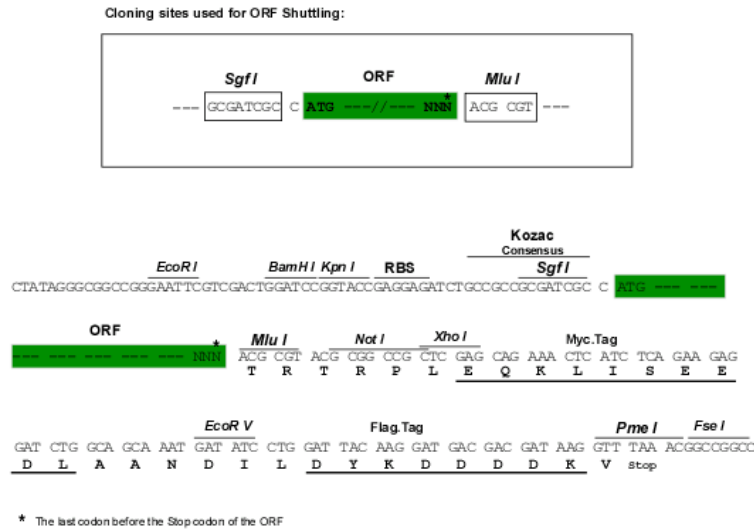
TRTRPLEQKLISEEDLAANDILDYKDDDDKV

Chromatograms:

https://cdn.origene.com/chromatograms/mk6041_h09.zip

Restriction Sites: SgfI-MluI

Cloning Scheme:



ACCN: NM_013438

ORF Size: 1767 bp

OTI Disclaimer: The molecular sequence of this clone aligns with the gene accession number as a point of reference only. However, individual transcript sequences of the same gene can differ through naturally occurring variations (e.g. polymorphisms), each with its own valid existence. This clone is substantially in agreement with the reference, but a complete review of all prevailing variants is recommended prior to use. [More info](#)

OTI Annotation: This clone was engineered to express the complete ORF with an expression tag. Expression varies depending on the nature of the gene.

Components: The ORF clone is ion-exchange column purified and shipped in a 2D barcoded Matrix tube containing 10ug of transfection-ready, dried plasmid DNA (reconstitute with 100 ul of water).

Reconstitution Method:

1. Centrifuge at 5,000xg for 5min.
2. Carefully open the tube and add 100ul of sterile water to dissolve the DNA.
3. Close the tube and incubate for 10 minutes at room temperature.
4. Briefly vortex the tube and then do a quick spin (less than 5000xg) to concentrate the liquid at the bottom.
5. Store the suspended plasmid at -20°C. The DNA is stable for at least one year from date of shipping when stored at -20°C.

RefSeq: [NM_013438.5](#)

RefSeq Size: 4177 bp

RefSeq ORF: 1770 bp

Locus ID: 29979

UniProt ID: [Q9UMX0](#)

Cytogenetics: 9q21.2-q21.3

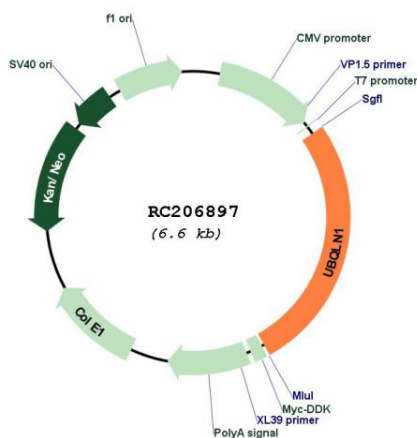
Domains: UBA, UBQ, STI1

Protein Families: Druggable Genome

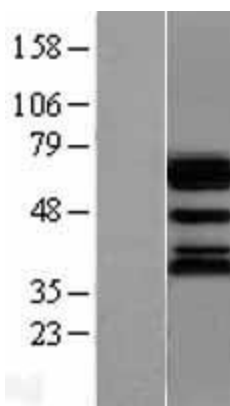
MW: 62.6 kDa

Gene Summary: This gene encodes an ubiquitin-like protein (ubiquilin) that shares a high degree of similarity with related products in yeast, rat and frog. Ubiquilins contain an N-terminal ubiquitin-like domain and a C-terminal ubiquitin-associated domain. They physically associate with both proteasomes and ubiquitin ligases, and thus are thought to functionally link the ubiquitination machinery to the proteasome to affect in vivo protein degradation. This ubiquilin has also been shown to modulate accumulation of presenilin proteins, and it is found in lesions associated with Alzheimer's and Parkinson's disease. Two transcript variants encoding different isoforms have been found for this gene. [provided by RefSeq, Jul 2008]

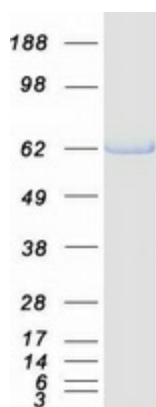
Product images:



Circular map for RC206897



Western blot validation of overexpression lysate (Cat# [LY402265]) using anti-DDK antibody (Cat# [TA50011-100]). Left: Cell lysates from untransfected HEK293T cells; Right: Cell lysates from HEK293T cells transfected with RC206897 using transfection reagent MegaTran 2.0 (Cat# [TT210002]).



Coomassie blue staining of purified UBQLN1 protein (Cat# [TP306897]). The protein was produced from HEK293T cells transfected with UBQLN1 cDNA clone (Cat# RC206897) using MegaTran 2.0 (Cat# [TT210002]).