

Product datasheet for **RC206895**

DLX1 (NM_178120) Human Tagged ORF Clone

Product data:

Product Type: Expression Plasmids
Product Name: DLX1 (NM_178120) Human Tagged ORF Clone
Tag: Myc-DDK
Symbol: DLX1
Vector: pCMV6-Entry (PS100001)
E. coli Selection: Kanamycin (25 ug/mL)
Cell Selection: Neomycin
ORF Nucleotide Sequence: >RC206895 ORF sequence
Red=Cloning site Blue=ORF Green=Tags(s)

TTTTGTAATACGACTCACTATAGGGCGGCCGGAATTCGTCGACTGGATCCGGTACCGAGGAGATCTGCC
 GCCCGATCGCC

ATGACCATGACCACCATGCCAGAAAGTCTCAACAGCCCCGTGTCGGGCAAGGCGGTGTTTATGGAGTTTGGCCGCCCCAACAGCAAATGTCTCCTTCTCCCATGTCCCACGGGCACTACTCCATGCACTGTTTACACTCGCGGGCCATTTCGACGCCGACGGCGCTACAGCTCAGCCTCGTCCTTCTCCGACCGCTGGGCTACCCCTACGTCAACTCGGTGAGCAGCCACGCATCCAGCCCTACATCAGTTTCGGTGCAGTCTACCGGGCAGGCCAGCCTCGCCCAGACCGCCTGGAGGACCCAGGGCGGACTCGGAGAAGAGCACGGTGGTGAAGGCGGTGAAGTGCCTTCAATGGCAAGGAAAAAAGATCCGTAACCAGGACGATTTATTGCAGTTTGCAGTTGCAGGCTTTGAACCGGAGTTCCAGCAAAGTCAAGTCACTAGCTCTGCCGAGAGGGCGGAGCTCGCGGCTCTTTGGGACTCACACAGACTCAGGTCAAGATCTGGTTCCAAAACAAGCGATCCAAGTTCAAGAAGCTGATGAAGCAGGGTGGGCGGCTCTGGAGGTAGTGCCTTGCCAACGGTCGGGCCCTGTCTGCTGGCTCCCCACCCGTGCCGCCCGCTGGAACCCTAACTCTTCATCCGGGAAGGGCTCAGGAGGAAACGGGGCTCTATA
TCCCCAGCTACACATCGTGGTACCCTTCAGCGCACCAAGAAGCTATGCAGCAACCCCAACTATG

ACGCGTACGCGGCCGCTCGAGCAGAAACTCATCTCAGAAGAGGATCTGGCAGCAAATGATATCCTGGATTACAAGGATGACGACGATAAGGTTTAA

Protein Sequence: >RC206895 protein sequence
Red=Cloning site Green=Tags(s)

MTMTMPESLNSPVSGKAVFMEFGPPNQMSPPMSHGHYSMHCLHSAGHSQPDGAYSSASSFSRPLGYPYVNSVSSHASSPYISSVQSYPGSASLAQSRLEDPGADSEKSTVVEGGEVRFNGKGGKIRKPRTIYCSLQLQALNRRFQQTQYLALPERAELAASLGLTQTQVKIWFQNKRSKFKKLMKQGGAALEGSALANGRALSAGSPVPVPGWNPNSSGKGGNAGSYIPSYTSWYPSAHQEAMQQPQLM

TRTRPLEQKLISEEDLAANDILDYKDDDDKV

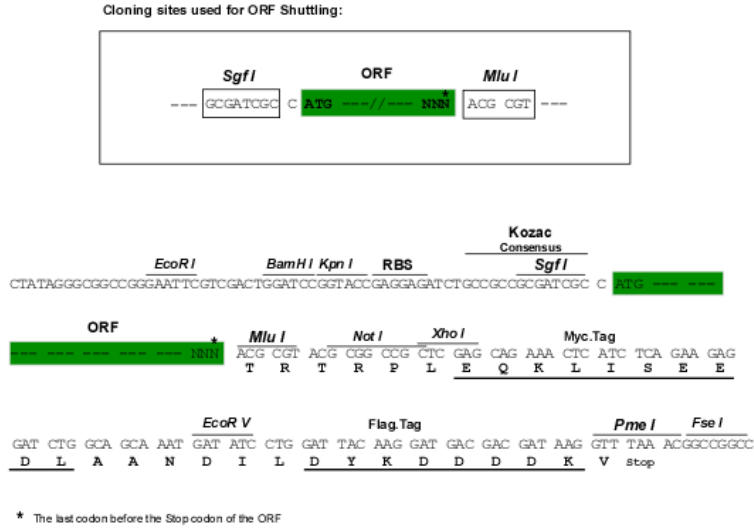


[View online »](#)

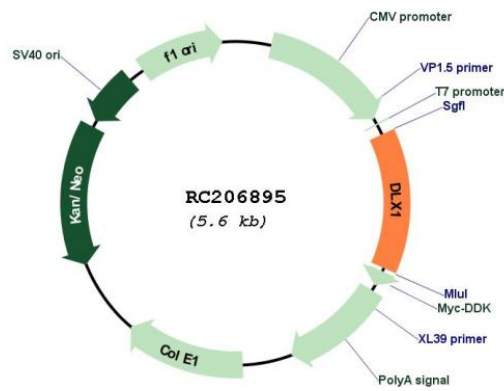
Chromatograms: https://cdn.origene.com/chromatograms/mk6074_c09.zip

Restriction Sites: SgfI-MluI

Cloning Scheme:



Plasmid Map:

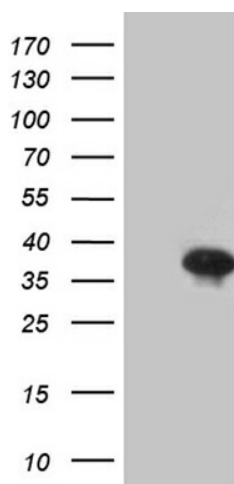


ACCN: NM_178120

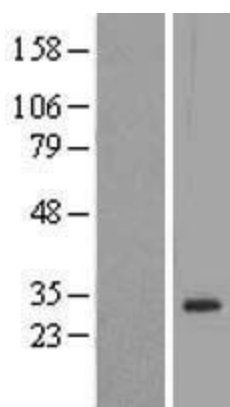
ORF Size: 765 bp

OTI Disclaimer: The molecular sequence of this clone aligns with the gene accession number as a point of reference only. However, individual transcript sequences of the same gene can differ through naturally occurring variations (e.g. polymorphisms), each with its own valid existence. This clone is substantially in agreement with the reference, but a complete review of all prevailing variants is recommended prior to use. [More info](#)

OTI Annotation:	This clone was engineered to express the complete ORF with an expression tag. Expression varies depending on the nature of the gene.
Components:	The ORF clone is ion-exchange column purified and shipped in a 2D barcoded Matrix tube containing 10ug of transfection-ready, dried plasmid DNA (reconstitute with 100 ul of water).
Reconstitution Method:	<ol style="list-style-type: none">1. Centrifuge at 5,000xg for 5min.2. Carefully open the tube and add 100ul of sterile water to dissolve the DNA.3. Close the tube and incubate for 10 minutes at room temperature.4. Briefly vortex the tube and then do a quick spin (less than 5000xg) to concentrate the liquid at the bottom.5. Store the suspended plasmid at -20°C. The DNA is stable for at least one year from date of shipping when stored at -20°C.
RefSeq:	NM_178120.5
RefSeq Size:	2403 bp
RefSeq ORF:	768 bp
Locus ID:	1745
UniProt ID:	P56177
Cytogenetics:	2q31.1
Protein Families:	ES Cell Differentiation/IPS, Transcription Factors
MW:	27.3 kDa
Gene Summary:	<p>This gene encodes a member of a homeobox transcription factor gene family similar to the Drosophila distal-less gene. The encoded protein is localized to the nucleus where it may function as a transcriptional regulator of signals from multiple TGF-β superfamily members. The encoded protein may play a role in the control of craniofacial patterning and the differentiation and survival of inhibitory neurons in the forebrain. This gene is located in a tail-to-tail configuration with another member of the family on the long arm of chromosome 2. Alternatively spliced transcript variants encoding different isoforms have been described. [provided by RefSeq, Jul 2008]</p>

Product images:


HEK293T cells were transfected with the pCMV6-ENTRY control (Cat# [PS100001], Left lane) or pCMV6-ENTRY DLX1 (Cat# RC206895, Right lane) cDNA for 48 hrs and lysed. Equivalent amounts of cell lysates (5 ug per lane) were separated by SDS-PAGE and immunoblotted with anti-DLX1 (Cat# [TA811631])(1:2000). Positive lysates [LY406033] (100ug) and [LC406033] (20ug) can be purchased separately from OriGene.



Western blot validation of overexpression lysate (Cat# [LY406033]) using anti-DDK antibody (Cat# [TA50011-100]). Left: Cell lysates from untransfected HEK293T cells; Right: Cell lysates from HEK293T cells transfected with RC206895 using transfection reagent MegaTran 2.0 (Cat# [TT210002]).