

Product datasheet for **RC206889**

PPP2R5B (NM_006244) Human Tagged ORF Clone

Product data:

Product Type:	Expression Plasmids
Product Name:	PPP2R5B (NM_006244) Human Tagged ORF Clone
Tag:	Myc-DDK
Symbol:	PPP2R5B
Synonyms:	B56B; B56beta; PR61B
Mammalian Cell Selection:	Neomycin
Vector:	pCMV6-Entry (PS100001)
E. coli Selection:	Kanamycin (25 ug/mL)



[View online »](#)

ORF Nucleotide Sequence:

>RC206889 ORF sequence
 Red=Cloning site Blue=ORF Green=Tags(s)

TTTTGTAATACGACTCACTATAGGGCGGCCGGGAATTCGTCGACTGGATCCGGTACCGAGGAGATCTGCC
 GCC**GCGATCGCC**

ATGGAGACGAAGCTGCCCCCTGCAAGCACCCCACTAGCCCTCCTCCCCGGGCTGTCGCCTGTGCCCC
 CACCCGACAAGGTGGACGGCTTCTCCCGCGTTCCCTCCGAGAGCCCGCCCGCGCTCCACAGCTC
 CTCTCAGTTCCGCTATCAGAGCAACCAGCAAGAGCTCACACCGCTGCCCTGCTCAAAGATGTGCCGGCT
 TCCGAGCTGCACGAGCTGCTGAGCCGGAAGCTGGCCAGTGTGGGTGATGTTTGACTTCTTGGACTGTG
 TGGCCGACCTCAAGGGGAAGGAGGTGAAGCGGGCAGCCCTCAACGAGCTGGTGGAGTGTGTGGGAGCAC
 CCGGGGTGCTCATCGAGCCCGTCTACCCAGACATCATCCGCATGATCTCAGTGAATATCTTCCGGACT
 CTGCCGCCAGTGAGAACCCTGAATTTGACCTGAAGAGGATGAGCCCAATCTTGAGCCTTCGTGGCCAC
 ACCTGCAGCTGGTATATGAGTTTTCTGCGTTTCTTGGAGAGCCAGACTTCCAGCCCTCCGTGGCCAA
 GAGATATGTGGATCAAAAGTTTGTCTGATGCTCCTGGAGCTATTTGATAGTGAGGATCCCCGGGAGCGT
 GAGTACCTCAAGACCATCCTGCACCGGGTCTATGGCAAGTTCTGGGTCTCCGGGCTACATCCGCAAAC
 AGTGCAACCACATCTTCTCCGGTTCATCTATGAATTCGAGCACTTCAATGGTGTGGCTGAGCTGCTGGA
 GATCCTAGGAAGCATCATCAATGGCTTTCGCTGCCCTGAAGACGGAGCACAAGCAGTTCCTGGTTCGC
 GTCCTGATCCCCCTGCACTCTGTCAAGTCGCTGTCTGTCTCCATGCCAGCTGGCATACTGTGTGGTGC
 AGTTCCTGGAGAAGGATGCCACTCTGACAGAGCACGTGATCCGGGGGCTGCTCAAATACTGGCAAAAAC
 CTGACCCAGAAGGAGGTGATGTTTCTGGGGGAGATGGAAGAGATTCTTGATGTCATCGAGCCCTCCAG
 TTTGTGAAGATCCAGGAGCCCTTTTAAAGCAGGTGGCTCGCTGTGTTTCCAGCCCCATTTCCAGTTG
 CAGAGCGGGCTCTGTATTTCTGGAACAATGAGTATATCCTAAGCCTCATTGAGGACAACCTGCCACTGT
 GCTGCCTGCTGTGTTGGGACCCTCTACCAAGTCTCCAAGGAGCACTGGAACCAACCATCGTATCACTG
 ATCTACAATGTGCTCAAGACCTTCATGGAGATGAATGGGAAGCTGTTTGTGAGCTCACAGCCTCTACA
 AGCTGGAAAAGCAGCAGGAGCAGCAGAAGGCCAGGAGCGTCAGGAGTTATGGCAAGGTCTGGAGGAGCT
 GCGGCTACGCCGGCTACAGGGGACCCAGGGGGCAAGGAGGCCCCCTCCAGCGGCTTACACCCAGGTG
 GCCGCCAGTGGGGTCAAGC

ACGCGTACGCGGCCGCTCGAGCAGAACTCATCTCAGAAGAGGATCTGGCAGCAAATGATATCTGGATT
 ACAAGGATGACGACGATAAGGTTTAA

Protein Sequence:

>RC206889 protein sequence
 Red=Cloning site Green=Tags(s)

METKLPPASTPTSPSSPGLSPVPPDPKVDGFSRRSLRRARPRRSHSSSQFRYQSNQQLTPLPLLDKDVPA
 SELHELLSRKLAQCQVMFDFLDCVADLKGKEVKRAALNELVECVGSTRGVLIEPVYPDIIRMISVNI FRT
 LPPSENPEFDPEEPEPNLEPSWPHLQLVYEFFLRFLESPDFQPSVAKRYVDQKFLMLLELFDSEDPRE
 EYLKTIILHRVYGFGLRAYIRKQCNHIFLRFIYEFHFNGVAELLEILGSIINGFALPLKTEHKQFLVR
 VLIPLHSVKLSVFHAQLAYCVVQFLEKDATL TEHVIRGLLKYWPKTCTQKEVMFLGEMEEILDVIEPSQ
 FVKIQEPLFKQVARCVSSPHFQVAERALYFWNNEYILSLIEDNCHTVLPVFGTLYQVSKEHWNQITVSL
 IYNVLKTFMEMNGKLFDELTASYKLEKQEQKAQERQELWQGLEELRLRRLQGTQGAKEAPLQRLTPQV
 AASGGQS

TRTRPLEQKLISEEDLAANDILDYKDDDDKV

Chromatograms:

https://cdn.origene.com/chromatograms/mk6134_h03.zip

Restriction Sites:

Sgfl-Mlul

Cloning Scheme:


ACCN: NM_006244

ORF Size: 1491 bp

OTI Disclaimer: The molecular sequence of this clone aligns with the gene accession number as a point of reference only. However, individual transcript sequences of the same gene can differ through naturally occurring variations (e.g. polymorphisms), each with its own valid existence. This clone is substantially in agreement with the reference, but a complete review of all prevailing variants is recommended prior to use. [More info](#)

OTI Annotation: This clone was engineered to express the complete ORF with an expression tag. Expression varies depending on the nature of the gene.

Components: The ORF clone is ion-exchange column purified and shipped in a 2D barcoded Matrix tube containing 10ug of transfection-ready, dried plasmid DNA (reconstitute with 100 ul of water).

Reconstitution Method:

1. Centrifuge at 5,000xg for 5min.
2. Carefully open the tube and add 100ul of sterile water to dissolve the DNA.
3. Close the tube and incubate for 10 minutes at room temperature.
4. Briefly vortex the tube and then do a quick spin (less than 5000xg) to concentrate the liquid at the bottom.
5. Store the suspended plasmid at -20°C. The DNA is stable for at least one year from date of shipping when stored at -20°C.

RefSeq: [NM_006244.4](#)

RefSeq Size: 2766 bp

RefSeq ORF: 1494 bp

Locus ID: 5526

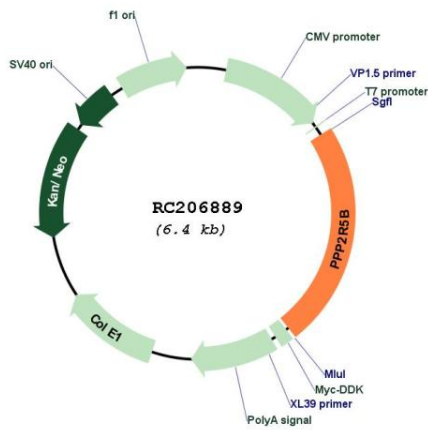
UniProt ID: [Q15173](#)

Cytogenetics: 11q13.1

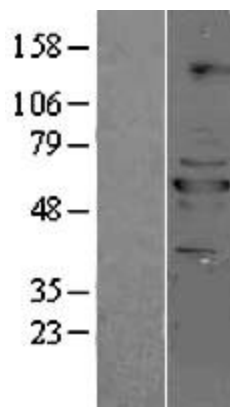
Domains: B56
Protein Families: Druggable Genome, Phosphatase
Protein Pathways: Oocyte meiosis, Wnt signaling pathway
MW: 57.4 kDa

Gene Summary: The product of this gene belongs to the phosphatase 2A regulatory subunit B family. Protein phosphatase 2A is one of the four major Ser/Thr phosphatases, and it is implicated in the negative control of cell growth and division. It consists of a common heteromeric core enzyme, which is composed of a catalytic subunit and a constant regulatory subunit, that associates with a variety of regulatory subunits. The B regulatory subunit might modulate substrate selectivity and catalytic activity. This gene encodes a beta isoform of the regulatory subunit B56 subfamily. [provided by RefSeq, Jul 2008]

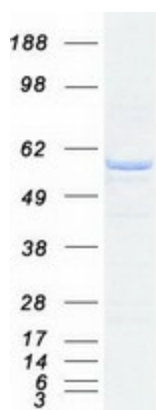
Product images:



Circular map for RC206889



Western blot validation of overexpression lysate (Cat# [LY401881]) using anti-DDK antibody (Cat# [TA50011-100]). Left: Cell lysates from untransfected HEK293T cells; Right: Cell lysates from HEK293T cells transfected with RC206889 using transfection reagent MegaTran 2.0 (Cat# [TT210002]).



Coomassie blue staining of purified PPP2R5B protein (Cat# [TP306889]). The protein was produced from HEK293T cells transfected with PPP2R5B cDNA clone (Cat# RC206889) using MegaTran 2.0 (Cat# [TT210002]).