

## Product datasheet for **RC206888**

### **MSL3L1 (MSL3) (NM\_078629) Human Tagged ORF Clone**

#### **Product data:**

Product Type:	Expression Plasmids
Product Name:	MSL3L1 (MSL3) (NM_078629) Human Tagged ORF Clone
Tag:	Myc-DDK
Symbol:	MSL3L1
Synonyms:	MRSXBA; MRXS36; MRXSBA; MSL3L1
Mammalian Cell Selection:	Neomycin
Vector:	pCMV6-Entry (PS100001)
E. coli Selection:	Kanamycin (25 ug/mL)



[View online »](#)

**ORF Nucleotide Sequence:**

>RC206888 ORF sequence  
 Red=Cloning site Blue=ORF Green=Tags(s)

TTTTGTAATACGACTCACTATAGGGCGGCCGGGAATTCGTCGACTGGATCCGGTACCGAGGAGATCTGCC  
 GCC**CGCATCGCC**

ATGAGCGCGAGCGAGGGCATGAAATTTAAATCCACTCAGGGGAGAAAGTGTGTCTTCGAGCCTGACC  
 CCACCAAGGCGAGTGCTGTACGATGCCAAGATTGTTGATGTTATTGTTGGGAAAGACGAAAAAGGCAG  
 AAAGATCCAGAATATCTGATCCATTTTAAATGGTTGGAACAGAAGCTGGGATAGATGGGCAGCAGAAGAT  
 CATGTGCTTCGTGATACCGATGAAAATCGTAGATTACAGCGTAAATGGCAAGAAAAGCTGTAGCTCGCC  
 TGAGGAGCACAGGAAGAAAGAAGAGCGCTGCAGGTTGCCTGGTGTGGACTCTGTCTTAAAAGGCCCTCCC  
 CACTGAAGAAAAAGATGAAAATGATGAAAACCTATTAAGCAGTTCCTCTGACTGTAGTAAAAACAAGGAT  
 GAAGAAAATAAGTGAAGAAAGTGAATTGAAGAAAAGACTGAAGTGAAGAAAGAACCAGAGCTTCAAACA  
 GAAGGGAAATGGAAGAAAGAACAATAACTATAGAAATCCCTGAAGTCTGAAGAAGCAGCTGGAGGATGA  
 TTGTTACTACATTAACAGGAGGAAACGGTTAGTAAAACCTCCATGCCAGACCAACATCATAACGATTTTG  
 GAATCCTATGTGAAGCATTGCTATCAATGCAGCCTTTTCAGCCAATGAGAGGCCCTCGTACCATCAGG  
 TTATGCCACATGCCAACATGAACGTGCATTATATCCCAGCAGAAAAGAATGTTGACCTTTGTAAGGAGAT  
 GGTGGATGGATTAAGAATAACCTTTGATTACACTCTCCGTTGGTTTTACTCTATCCATATGAACAAGCT  
 CAGTATAAAAAGGTGACTTCGTCTAAATTTTTTCTTCAAATTAAGGAAAGTGCCACAAGCACTAACAGGA  
 GCCAGGAGGAACCTCTCCAGTCCGCCTTTGTTGAATCCATCCACGCCACAGTCCACAGAGAGTCAGCC  
 GACCACCGGTGAACCAGCCACCCCAAAAGGCGCAAGCTGAGCCAGAAGCATTGCAGTCTCTGAGGCGG  
 TCCACGCGCCACAGTGCCAACTGTGACAGGCTTCTGAGAGCAGCGCTTACCTCAGCCAAAGCGCCGGC  
 AGCAGGACACATCCGCCAGCATGCCAAGCTCTTCTGCACCTGGAAAAGAAGACACCTGTGCATAGCAG  
 ATCATCTTACCTATTCCTCTGACTCCTAGCAAGGAAGGAGTGTGTGTTTTGCTGGCTTTGAAGGGAGA  
 AGAACTAATGAAATAAACGAGGTCTCTCTGGAAGCTTGTGCCTGACAATTACCCCCAGGTGACCAGC  
 CGCCTCCACCCTTACATTTATGGGGCACAACATTTGCTGCGATTGTTTGTGAAACTTCCAGAAATCCT  
 TGGAAAGATGTCTTTTCTGAGAAGAACTGAAGGCTTTATTGAAGCACTTTGATCTCTTTTTGAGGTTT  
 TTAGCAGAATACCAGATGACTTCTTCCAGAGTCGGCTTATGTCGCTGCCTGTGAGGCACATTACAGCA  
 CCAAGAACCCCGGCAATTTAT

**ACGCGT**ACGCGGCCGCTCGAGCAGAAACTCATCTCAGAAGAGGATCTGGCAGCAAATGATATCTGGATT  
 ACAAGGATGACGACGATAAGGTTTAA

**Protein Sequence:**

>RC206888 protein sequence  
 Red=Cloning site Green=Tags(s)

MSASEGMKFKFHSGEKVLCEPDPTKARVLYDAKIVDVIIVGKDEKGRKIPEYLIHFNGWNRSWDRWAAED  
 HVLRTDENRRLQRKLARKAVARLRSTGRKKRCRLPGVDSVLKGLPTEEKDENDENSLSSSDCSENKD  
 EEISEESDIEEKTEVKEPELQTRREMEERTITIEIPEVLKQLEDDCYINRRKRLVKLPCQTNIITIL  
 ESYVKHFAINAASFANERPRHHVMPHANMNVHYIPAENVDLCKEMVDGLRITFDYTLPLVLLYPYEQA  
 QYKQVTSKFFLPIKESATSTNRSQEELSPSPLLNPSTPQSTESQPTTGEPATPKRRKAEPEALQSLRR  
 STRHSANCDRLSESSASPQPKRRQDTSASMPKFLHLEKKTVPVHSRSSPIPLTPSKEGSAVFAGFEGR  
 RTNEINEVLSWKLVPDNYPPGDQPPPPSYIYGAQHLLRLFVKLPEILGKMSFSEKNLKALLKHFDLFLRF  
 LAEYHDDFFPESAYVAACEAHYSTKNPRAIY

**TRTRPLEQKLI**SEEDLAANDILDYKDDDDKV

**Chromatograms:**

[https://cdn.origene.com/chromatograms/mk6041\\_b07.zip](https://cdn.origene.com/chromatograms/mk6041_b07.zip)

**Restriction Sites:**

Sgfl-Mlul

**Cloning Scheme:**


**ACCN:** NM\_078629

**ORF Size:** 1563 bp

**OTI Disclaimer:** The molecular sequence of this clone aligns with the gene accession number as a point of reference only. However, individual transcript sequences of the same gene can differ through naturally occurring variations (e.g. polymorphisms), each with its own valid existence. This clone is substantially in agreement with the reference, but a complete review of all prevailing variants is recommended prior to use. [More info](#)

**OTI Annotation:** This clone was engineered to express the complete ORF with an expression tag. Expression varies depending on the nature of the gene.

**Components:** The ORF clone is ion-exchange column purified and shipped in a 2D barcoded Matrix tube containing 10ug of transfection-ready, dried plasmid DNA (reconstitute with 100 ul of water).

- Reconstitution Method:**
1. Centrifuge at 5,000xg for 5min.
  2. Carefully open the tube and add 100ul of sterile water to dissolve the DNA.
  3. Close the tube and incubate for 10 minutes at room temperature.
  4. Briefly vortex the tube and then do a quick spin (less than 5000xg) to concentrate the liquid at the bottom.
  5. Store the suspended plasmid at -20°C. The DNA is stable for at least one year from date of shipping when stored at -20°C.

**RefSeq:** [NM\\_078629.4](#)

**RefSeq Size:** 2359 bp

**RefSeq ORF:** 1566 bp

**Locus ID:** 10943

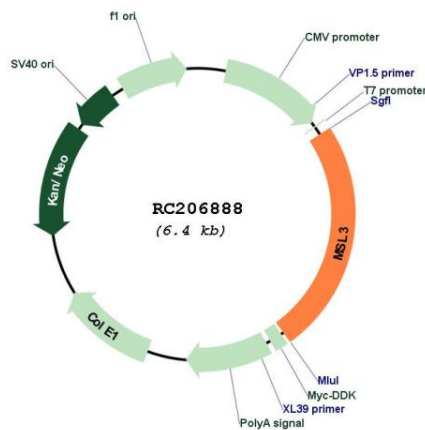
**UniProt ID:** [Q8N5Y2](#)

**Cytogenetics:** Xp22.2

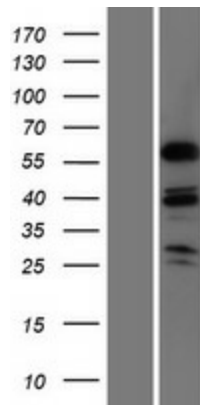
**Domains:** CHROMO  
**Protein Families:** Transcription Factors  
**MW:** 59.8 kDa

**Gene Summary:** This gene encodes a nuclear protein that is similar to the product of the *Drosophila* male-specific lethal-3 gene. The *Drosophila* protein plays a critical role in a dosage-compensation pathway, which equalizes X-linked gene expression in males and females. Thus, the human protein is thought to play a similar function in chromatin remodeling and transcriptional regulation, and it has been found as part of a complex that is responsible for histone H4 lysine-16 acetylation. This gene can undergo X inactivation. Alternative splicing results in multiple transcript variants. Related pseudogenes have been identified on chromosomes 2, 7 and 8. [provided by RefSeq, Jul 2010]

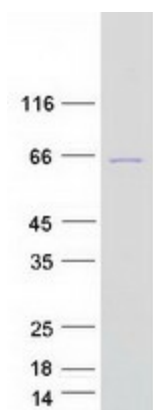
**Product images:**



Circular map for RC206888



Western blot validation of overexpression lysate (Cat# [LY409198]) using anti-DDK antibody (Cat# [TA50011-100]). Left: Cell lysates from untransfected HEK293T cells; Right: Cell lysates from HEK293T cells transfected with RC206888 using transfection reagent MegaTran 2.0 (Cat# [TT210002]).



Coomassie blue staining of purified MSL3 protein (Cat# [TP306888]). The protein was produced from HEK293T cells transfected with MSL3 cDNA clone (Cat# RC206888) using MegaTran 2.0 (Cat# [TT210002]).