

Product datasheet for **RC206887**

TMEM209 (NM_032842) Human Tagged ORF Clone

Product data:

Product Type:	Expression Plasmids
Product Name:	TMEM209 (NM_032842) Human Tagged ORF Clone
Tag:	Myc-DDK
Symbol:	TMEM209
Synonyms:	NET31
Mammalian Cell Selection:	Neomycin
Vector:	pCMV6-Entry (PS100001)
E. coli Selection:	Kanamycin (25 ug/mL)



[View online »](#)

ORF Nucleotide Sequence:

>RC206887 ORF sequence
 Red=Cloning site Blue=ORF Green=Tags(s)

TTTTGTAATACGACTCACTATAGGGCGGCCGGAATTCGTCGACTGGATCCGGTACCGAGGAGATCTGCC
 GCC**CGCATCGCC**

ATGATGCAGGGGAGGCACACCCTAGTGCTTCCCTTATTGACAGAACCATCAAGATGAGAAAAGAAACAG
 AGGCTAGGAAAGTGGTCTTAGCCTGGGGACTCCTAAATGTATCTATGGCTGGAATGATATACTGAAAT
 GACTGGAAAATTGATTAGTTCATACTACATGTGACATACTGGCCCTCTGGTATATTGAGCTTGCCTT
 GCATCTCTCTCAGCCTTAATGCCTATTTGATTTTTGGAGATATTTCAAATATACTGTGGCACCACAA
 GTCTGGTTGTTAGTCTGGACAGCAAACACTTTTAGGGTTGAAAACAGCTGTTGTACAGACTACGCCTC
 ACATGATCTGGCAGCAACCCAAATCCCTCCCGCTCCACCTTCCCCTTCAATTCAGGGTCAAGTGTGTTG
 AGTTATAGCCCTTCTCGTTCGCCAGTACCAGTCCCAAGTTCACCACCAGCTGTATGACTGGTTACAGCC
 CTCAGCTGCAAGGTCTGTCTCAGGTGGCAGTGGTTCCTATAGCCCTGGAGTGACCTACTCGCCCGTCA
 TGTTTATAATAAGTTGGCGAGCTTAGCCCTCTCCTCCTTCTCCGTACCCTACCCTGTTGGACCAGTG
 GAGAGCAGTGGATTGAGATCTCGCTACCCTTCTCACCTACCGTCTACAACCTCACCTACTGACAAAGAAG
 ACTACATGACCGACCTACGAACCTTTGGATACTTTTCTCAGAAGTGAAGAGGAGAAAACAGCATAGGGTTAA
 GCTGGGGAGCCAGATTCTACCTCTCCTCCAGCAGTCTACTTTCTGGAATAAGTCTGTTCTATGGGG
 GATTATGCACAACTTTAAAGAAGTTTTCAGTATCAGCTTGCCGTAGGTCTCAGGCCCATGTGCTAACA
 AAGATGAAGCCGATCTCAGCTCTAAACAAGCCGAGAAGAGGTCTGGGCAAGAGTGGCTATGAATAGACA
 ACTTCTTGATCATATGGATTCTGACAGCTAAATTTAGAAATGGATCAATGAGACAATATTAGTGCCA
 CTTGTTCAAGAGATTGAGTCTGTGACACACAGATGAGACGAATGGTGTCCAGAGCTACAGATAGGAG
 AGGCTAGTATTACTAGCTTGAACAAGCTGCCCTGGTTAAAGCGCCTCTCATTCCGACTTTGAACACAAT
 CGTTTCAGTATCTAGACCTTACTCCAATCAGGAATACTGTTTGAAGGATCAAAGAATCTCAGGGA
 GGTTGTATGAGCTCATTTGATGGAACAGAGGTGGCGACTTCAAAGGACGAAAGTGGGATACAGACCTGC
 CCACCGATTCTGCTATCATCATGATGATTTTGCACCTACCTTGATTCCAGATTACCTCCACATCCGAA
 GTATCCCGACGAAAACTTTTACTTCTCAGCACTTTGTTTCCAGACACCAATAAACCCAGATGTTACAAAT
 GAGAATGTTTTTGCATTTATCAGAGTGTATCAACCCTCCCATATGAGCTCATCTACCAGCGTCATG
 TATAAACCTGCCAAAGGGCAGAAATAATATGTTTCATACATTGTTGATGTTTCTCTACATCATAAAGAC
 CAAAGAGTCAGGAATGCTTGGGAGATTAATCTTGGTCTATCTGGTGTGAATATATTGTGGATCTTTGGC
 GAG

ACGCGTACGCGGGCCGCTCGAGCAGAAACTCATCTCAGAAGAGGATCTGGCAGCAAATGATATCCTGGATT
 ACAAGGATGACGACGATAAGGTTTAA

Protein Sequence:

>RC206887 protein sequence
 Red=Cloning site Green=Tags(s)

MMQGEAHPASLIDRTIKMRKETEARVVLAWGLLNVS MAGMIYTEM TGKLISYYNVTYWPLWYIELAL
 ASLFLNALFDWRYFKYTVAPTSLVVSPGQQTLLGLKTA VVQTTPPHDLAATQIPPAPSPSPSIQGGQSVL
 SYSPSRPSTSPKFTTSCMTGYSPLQLQLSSGSGSYSPGVTYSPVSGYNKLASFSPSPSPYPTTVGPV
 ESSGLRSYRSPVYNSPTDKEDYMTDLRLDTFLRSEEEKQHRVKLGSPDSTSPSSSPTFWNYSRSMG
 DYAQTLKKFQYQLACRSQAPCANKDEADLSSKQAAEEVWARVAMNRQLLDHMDSWAKFRNWINETILVP
 LVQEIESVSTQMRMGCPQLIGEASITSLKQAALVKAPLIPTLNTIVQYLDLTPNQEYLFERIKELSQG
 GCMSSFRWNRGGDFKGRKWDLDLPTDSAIIMHVFCTYLD SRLPPHPKYPDGKFTFSQHVFQTPNKPDVTN
 ENVFCIYQSAINPPHYELIYQRHVYNLPKGRNNMFHTLLMFLYIIKTKESGMLGRVNLGLSGVNILWIFG
 E

TRTRPLEQKLISEEDLAANDILDYKDDDDKV

Chromatograms:

https://cdn.origene.com/chromatograms/mk6587_c05.zip

Restriction Sites:

Sgfl-Mlul

Cloning Scheme:


ACCN: NM_032842

ORF Size: 1683 bp

OTI Disclaimer: The molecular sequence of this clone aligns with the gene accession number as a point of reference only. However, individual transcript sequences of the same gene can differ through naturally occurring variations (e.g. polymorphisms), each with its own valid existence. This clone is substantially in agreement with the reference, but a complete review of all prevailing variants is recommended prior to use. [More info](#)

OTI Annotation: This clone was engineered to express the complete ORF with an expression tag. Expression varies depending on the nature of the gene.

Components: The ORF clone is ion-exchange column purified and shipped in a 2D barcoded Matrix tube containing 10ug of transfection-ready, dried plasmid DNA (reconstitute with 100 ul of water).

- Reconstitution Method:**
1. Centrifuge at 5,000xg for 5min.
 2. Carefully open the tube and add 100ul of sterile water to dissolve the DNA.
 3. Close the tube and incubate for 10 minutes at room temperature.
 4. Briefly vortex the tube and then do a quick spin (less than 5000xg) to concentrate the liquid at the bottom.
 5. Store the suspended plasmid at -20°C. The DNA is stable for at least one year from date of shipping when stored at -20°C.

Note: Plasmids are not sterile. For experiments where strict sterility is required, filtration with 0.22um filter is required.

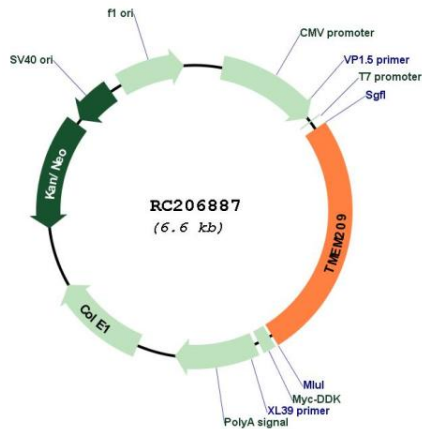
RefSeq: [NM_032842.4](#)

RefSeq Size: 3560 bp

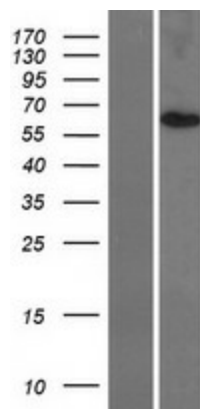
RefSeq ORF: 1686 bp

Locus ID: 84928

UniProt ID: Q96SK2
Cytogenetics: 7q32.2
Protein Families: Transmembrane
MW: 62.9 kDa

Product images:


Circular map for RC206887



Western blot validation of overexpression lysate (Cat# [LY409824]) using anti-DDK antibody (Cat# [TA50011-100]). Left: Cell lysates from untransfected HEK293T cells; Right: Cell lysates from HEK293T cells transfected with RC206887 using transfection reagent MegaTran 2.0 (Cat# [TT210002]).