

## Product datasheet for **RC206881**

### **RAD54L2 (NM\_015106) Human Tagged ORF Clone**

#### Product data:

**Product Type:** Expression Plasmids  
**Product Name:** RAD54L2 (NM\_015106) Human Tagged ORF Clone  
**Tag:** Myc-DDK  
**Symbol:** RAD54L2  
**Synonyms:** ARIP4; HSPC325; SRISNF2L  
**Mammalian Cell Selection:** Neomycin  
**Vector:** pCMV6-Entry (PS100001)  
**E. coli Selection:** Kanamycin (25 ug/mL)  
**ORF Nucleotide Sequence:** >RC206881 representing NM\_015106  
 Red=Cloning site Blue=ORF Green=Tags(s)

TTTTGTAATACGACTCACTATAGGGCGGCCGGAATTCGTCGACTGGATCCGGTACCGAGGAGATCTGCC  
 GCC**CGATCGCC**

ATGTCAGACGAATCTGCCTCAGGGAGCGATCCAGACCTGGACCCGGACGTGGAGCTGGAGGATGCGGAAG  
 AGGAGGAGGAGGAGGAGGAGGTGGCAGTGGAGGAGTGTGACAGGGATGATGAAGAAGACCTGCTGGATGA  
 CCCATCCCTGGAAGGCATGTGTGGCACTGAGCATGCCAGTTGGGAGAAGATGGGCAGCAGCCGCCGCGG  
 TGCACCTCAACTACCTCATCTCAGTCTGAGCCTTCAGAGCAGCTTAGGCGCCACCAAGGCAAGAACCTAG  
 CCTCCGAGGACCCAAAAAGAAGAGAGCTCAGAAGCCCTCCACATGAGAAGAAACATACGAAAGCTACT  
 CCGGGAGGATCAATTGGAGCCTGTTACCAAAGCAGCACAGCAAGAAGAGTTGGAAAAGAAGGAAGCGCCTG  
 GAGCAGCAGAGGAAAGATTATGCAGCCCTATTCTACTGTTCCGCTGGAGTTCTCCCTGAGGAAATTG  
 CTTAAGGGCAAGTGACGGTCCCAACTGCCTCCTCGGGTCTTGGCCAGGAAGTCATTTGTTTGGACAG  
 TAGCAGTGGCAGTGAGGATGAAAAAGCAGTCGAGATGAGGTGATTGAACTGAGCTCTGGAGAGGAGGAC  
 ACTCTGCACATTTGTGGACAGCAGTGAATCTGTGAGTGAAGATGATGAGGAAGAAGAGAAGGGTGGCACCC  
 ATGTCAATGATGTCTTAAACCAGCGTGACGCCCTGGGCGGGTCTTGTCAACCTAAACCACCTCCAGA  
 GGAGGAAAATGTCTTCTTCCCCACAGTTGGCACGGGCTGTGAAACCTCATCAGATTGGCGGGATCCGG  
 TTCCCTTACGATAACCTAGTGGAGTCTCTGGAGAGGTTTAAAGACCAGCAGTGGCTTTGGCTGATTCTGG  
 CCCACAGCATGGGTCTGGGAAAACTTTGCAAGTGATCTCTTTCATCGAGTCTCTTCCGCCACAGCC  
 AGCCAAAACAGTCTTGGCATTGTGCCGTTAATACTCTTCAGAATTGGCTGGCAGAGTTCAACATGTGG  
 CTTCCACCTCCTGAAGCCCTCCCGGCTGACAACAAGCCTGAAGAAGTCCAGCCTCGGTTCTTTAAAGTTC  
 ACATCTTGAATGATGAGCACAAGACGATGGCATCTCGTGCTAAAGTATGGCTGATTGGGTGTCAGAGGG  
 TGGCGTGTCTGATGGGTACGAGATGTACAGACTCCTCACTCTGAAGAAATCATTGGCCACAGGTAGA  
 CCGAAGAAAACCAAGAAGCGTTCTACCCAGTCATCATTGATCTAGATGAGGAAGATCGGCAGCAGGAGT  
 TTCGGAGAGATTTGAGAAGCTTTATGCCGCCCTGGCCCTGATGTAGTAATCTGTGATGAGGGACACCG  
 CATCAAAAACCTGCCAGGCCAGCACCTCACAGGCTCTGAAGAATATCCGCTCTCGCCGCCGGTGGTCTG



[View online »](#)

ACTGGGTACCCTCTGCAAAACAACCTCATTGAGTACTGGTGCATGGTGGACTTTGTGCGCCAGACTTCC  
TTGGCACCCGGCAGGAGTTCAGCAACATGTTTGAACGCCCTATCCTGAATGGGCAATGTATTGACAGCAC  
ACCTCAGGACGTCCGCTCATGCGGTACCGGAGCCATGTCCTGCACAGTCTTCTGGAGGGCTTTGTGCAG  
AGGAGAGGCCACACTGTGCTGAAGATTCATCTCCCTGCCAAGGAAGAAAATGTGATCCTTGTGCGGCTCT  
CCAAGATCCAGCGAGATTTGTATACACAGTTCATGGATCGCTCCGGGACTGTGGTAGCAGCGTGGCT  
GGGCTGAACCCCTTAAGGCATTCTGTGTGTGTTGCAAGATCTGGAATCACCCCTGATGTGCTGTATGAA  
GCCCTTCAGAAGGAGAGCTTGGCCAATGAGCAGGACCTAGACGTGGAAGAAGTGGCTCTGCAGGGACCA  
GTGCCCGCTGTCCACCACAGGGAACAAAAGGCAAGGGAGAGGATAGCACCTTGGCTTCTCGATGGGAGA  
GGCAACCAATAGCAAGTTCCTACAGGGCGTTGGCTTCAACCCCTTCCAGGAGCGAGGCAACAACATTGTC  
ACATATGAATGGGCAAGGACCTTCTGACTAATTACCAGACTGGAGTCTAGAAAACCTCCCAAGATGG  
TACTGCTTTTCCACCTGATTGAGGAAAGTGAAGCTTGGGGACAAGATCCTTGTGTTTAGCCAGAGTCT  
TTCCACCTTGGCTCTCATCGAGGAATTCCTTGGAAAACGAGAAGTACCCTGTCCACCTGGTACCGAGGG  
CAAGGAGCACAGAAGTGGGTCGAAACATCAGCTACTTCCGGCTAGATGGTAGCACCCCTGCCTTGTAGA  
GGGAGCGGCTTATAATCAGTTCATGATCCCAGCAACCTCACCCCTGGCTGTTCTTCTCTACAAG  
GGCCGGATGCTTGGGTGAATCTGATTGGTGCCAACCGAGTGGTGGTGTGATGCTTCTGGAACCCCT  
TGCCATGATGCCAGGCAGTATGTCGGGTATACGGTATGGCCAGAAAAGCCCTGTACATCTATCGCC  
TTGTGGCTGATTACACTTAGAAAAGAAGATCTATGACCGTCAGATTTCAAGCAGGGCATGTGATGATCG  
GGTGGTGGATGATCTAAATCCAATGCTGAACTTACACGGAAAGAGGTGGAAAACCTACTGCACTTTGTT  
GAGAAGGAGCCAGCTCCCCAAGTTTCTTGAACGTAAGGGGATCAAGGAGTCAGTCTGCAACTGGCCT  
GTCTGAAGTACCCTCACCTCATCACAAGGAGCCTTTCGAGCATGAGTATTGCTTGAACCGAAAAGGA  
TCAAGCTAACCAAGGCTGAGAAAAAGCAGCAAAAGAAAAGCTATGAGGAAGACAAACGCATCAGTC  
CCCTATACCCGCCATCGTATGCGCAGTATTACCCTGCCAGCATCAGAGCCTGACCAGCATCCCCGCT  
TCAGCCAGAGAAAAGTGGCAGCAACTTTGAAGGTGATGAAAAGCCTGTGGCCAGTGTTCGTCTGTGCA  
GTCCACCCCATCCCATGATGCCCGCATGTCCATTGGGAGGAAGTGAAGCTCTGCCTCCAGCACA  
AATCCATCCATGAACTTCCCATCAACTACTTGCAGCGTGCAGGAGTCTTGTGCAGAAGTGGTACCA  
CGACAGATATTGTTATTCTGGACTCAACAGCTCCACAGATGTACAGGCAAGAATTAATGCTGGTGAAG  
CATCCACATCATCCGTGGGACAAAAGGGACGTACATCCGTACCAGTGTGAGCAGGATCTTGTGTCGG  
GCAACTGGCAAACCAAGGTTCTGAAGATGGTCGGATGGCTGCCTCAGGTTCCAGGGACCTTCTTGG  
AGTCCACAAGCAACGGCAGACACAGTGCCTCATACCCAAAGCCCCGACCCTGAGGGGCTGGCCAGGCC  
CGTCTCTCTGACAGCCAGAGATCATCAGTGAGCTTCCAGCATGCAGATGTGGCTGCTGCCCGGAA  
TCCCGTCAGAGCTCCCCAAGCACAATGCCGCCCTGCCTGGCCCCCGGCCAACTTATGGACAGCAGTG  
CTGTTCCCGGGACAGCTCTCGAACTGAGCCTCGACTAGGGGGTATTGCCTCAATAGTTCCCTCTTGGT  
GACTGGCCAGCCCTGTGGTGACAGGCACCCAGTGCCTGACTTAAGGGGCCACAAGCGAAAGTTGGCCACA  
CCACCTGCTGCCAGGAGTATCCCGCCGGCGGTCCAGGAAGGGTATCTGCCAGCCCCCGTGCAGCCGT  
ATGAACACGGGTATCCAGTCTCTGGCGGGTTGCCATGCCACCCGTCTCCTTAAACCATAACCTCACCA  
CCCCTTCACTCCAGGCTGGGAGAACTCCCTGTTTATGGGCAGTACCCCTCTACTACCAGCTGTCC  
AATTTGCTGGCAGATGCCCGCTGGTGTTCAGTGACTACTGACCCTCTGGTCCAGCAGGCCCGGTC  
GATACTACCCAGCTATTCACTCCATTCTCACAGCCACTCCTGTCGAGCCGAGGATGTTTGGCCCTTTT  
CCTTCCCCTGTCTTGGCCAGCAACCTTTCGCGGGGCATGTCTATCTATCCAGGCTACATGTCCCCACATG  
CAGGCTACCCAGCTGGTGGCTCTACGGTCCCAGGTGCCTCCATTTGACTCTCATGAGGTTGCCGAGGT  
TGGTTACAGTCCAATGATGATGAGGATAAAGACGATGATGTGATAGAGGTCCTGGGAAA

ACGCGTACGCGGGCGCTCGAGCAGAACTCATCTCAGAAGAGGATCTGGCAGCAATGATATCCTGGATT  
ACAAGGATGACGACGATAAGGTTTAA

**Protein Sequence:** >RC206881 representing NM\_015106  
Red=Cloning site Green=Tags(s)

```
MSDESASGSDPDLDPDVELEDAEEEEEEEEVAVEECDRDDEEDLLDDPSLEGMCGETHAQLGEDGQQPPR
CTSTTSSQSEPEQLRRHQGNLASEDPKKKRAQKPSHMRRNIRKLLREDQLEPVTKAAQQEELERRKRL
EQQRKDYAAPITVPLEFLPEEIALRASDGPQLPPRVLAQEVICLDSSSGSEDEKSSRDEVIELSSGEED
TLHIVDSSESVSEDEDEEEEGGTHVNDVLNQRDALGRVLVNLNHPPEEENVFLAPQLARAVKPHQIGGIR
FLYDNLVESLERFKTSSGFGCILAHSMGLGKTLQVISFIDVLFRHTPAKTVLAIVPVNTLQNWLAEFNMW
LPPPEALPADNKPEEVQPRFFKVHILNDEHKTMASRAKVMADWVSEGGVLLMGYEMRYRLLTLKKSATGR
PKKTKKRSHPIIDLDEEDRQEQFRFEKALCRPGPDVVICDEGHRIKNCQASTSQALKNIRSRRRVVL
TGYPQLNNLIEYWCMDVFRPDFLGTREQFSNMFERPILNGQCIDSTPQDVRLMRYRSHVLHSLLEGFVQ
RRGHTVLKIHLPAAKEENVILVRLSKIQRDLYTQFMDRFRDCGSSGWLGLNPLKAFVCCKIWNHPDVLVE
ALQKESLANEQDL DVEELGSAGTSARCPPQGTGKGGEDSTLASSMGEATNSKFLQGVGFNPFQERGNIV
TYEWAKDLLTNYQTGVLENSPKMVLFLHLEESVKLGDKILVFSQSLSTLALIEEFLGKREVPCCPGTEG
QGAQKWVRNISYFRLDGSTPAFERERLINQFNPSNLTWFLSTRAGCLGVNLIGANRVVVFADSWNP
CHDAQAVCRVYRYGQKKPCYIYRLVADYTLKKIYDRQISKQGMSDRVVDDLNPMLNFRTRKEVENLLHFV
EKEPAPQVSLNVKGIKESVLQLACLKYPHLITKEPFEHESLLLNRKDHKLTKAEKKAACKSYEEDKRTSV
PYTRPSYAQYYPASDQSLTSIPAFSQRNWQPTLKGDEKPVASVRPVQSTPIPMMPRHVPLGGSVSSASST
NPSMNFPIYLRAGVLVQKVVTITDIPGLNSSTDVQARINAGESIHIIRGKTGYIRTSDGRIFAVR
ATGKPKVPEDGRMAASGSQGPSCESTSNGRHSASSPKAPDPEGLARPVSPDSPEIISELQQYADVAARE
SRQSSPSTNAALPGPPAQLMSSAVPGTALGTEPRLGGHCLNSSLVTGQPCGDRHPVLDLRGHRKRLAT
PPAAQESSRRRSRKGHLPAVQVQYEHGYPVSGGFAMPPVSLNHNLTTPFTSQAGENSLFMGSTPSYYQLS
NLLADARLVFPVTTDPLVPAGPVSSSSTATSVTASNPSFMLNPSVPGILPSYSLPFSQPLLSEPRMFAPF
PSPVLPNLSRGMISYPGYMSPHAGYPAGLLRSQVPPFDSHEVAEVEVGFSSNDEDEKDDDDVIEVTGK
```

TRTRPLEQKLISEEDLAANDILDYKDDDDKV

**Chromatograms:** [https://cdn.origene.com/chromatograms/mk8025\\_e11.zip](https://cdn.origene.com/chromatograms/mk8025_e11.zip)

**Restriction Sites:** SgfI-MluI

**Cloning Scheme:**

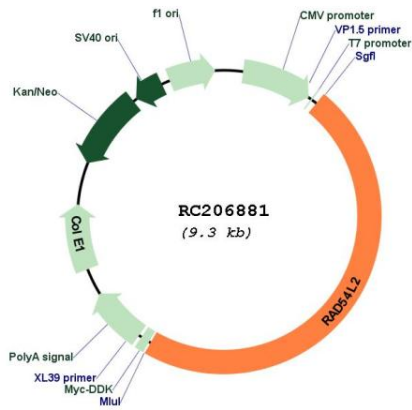


**ACCN:** NM\_015106

**ORF Size:** 4401 bp

<b>OTI Disclaimer:</b>	The molecular sequence of this clone aligns with the gene accession number as a point of reference only. However, individual transcript sequences of the same gene can differ through naturally occurring variations (e.g. polymorphisms), each with its own valid existence. This clone is substantially in agreement with the reference, but a complete review of all prevailing variants is recommended prior to use. <a href="#">More info</a>
<b>OTI Annotation:</b>	This clone was engineered to express the complete ORF with an expression tag. Expression varies depending on the nature of the gene.
<b>Components:</b>	The ORF clone is ion-exchange column purified and shipped in a 2D barcoded Matrix tube containing 10ug of transfection-ready, dried plasmid DNA (reconstitute with 100 ul of water).
<b>Reconstitution Method:</b>	<ol style="list-style-type: none"><li>1. Centrifuge at 5,000xg for 5min.</li><li>2. Carefully open the tube and add 100ul of sterile water to dissolve the DNA.</li><li>3. Close the tube and incubate for 10 minutes at room temperature.</li><li>4. Briefly vortex the tube and then do a quick spin (less than 5000xg) to concentrate the liquid at the bottom.</li><li>5. Store the suspended plasmid at -20°C. The DNA is stable for at least one year from date of shipping when stored at -20°C.</li></ol>
<b>RefSeq:</b>	<a href="#">NM_015106.4</a>
<b>RefSeq Size:</b>	4731 bp
<b>RefSeq ORF:</b>	4404 bp
<b>Locus ID:</b>	23132
<b>UniProt ID:</b>	<a href="#">Q9Y4B4</a>
<b>Cytogenetics:</b>	3p21.2
<b>Domains:</b>	SNF2_N, DEAD, helicase_C
<b>MW:</b>	162.6 kDa
<b>Gene Summary:</b>	DNA helicase that modulates androgen receptor (AR)-dependent transactivation in a promoter-dependent manner. Not able to remodel mononucleosomes in vitro (By similarity). [UniProtKB/Swiss-Prot Function]

Product images:



Circular map for RC206881