

Product datasheet for **RC206880**

CXorf38 (NM_144970) Human Tagged ORF Clone

Product data:

Product Type:	Expression Plasmids
Product Name:	CXorf38 (NM_144970) Human Tagged ORF Clone
Tag:	Myc-DDK
Symbol:	CXorf38
Mammalian Cell Selection:	Neomycin
Vector:	pCMV6-Entry (PS100001)
E. coli Selection:	Kanamycin (25 ug/mL)
ORF Nucleotide Sequence:	>RC206880 ORF sequence Red=Cloning site Blue=ORF Green=Tags(s)

TTTTGTAATACGACTCACTATAGGGCGGCCGGAATTCGTCGACTGGATCCGGTACCGAGGAGATCTGCC
GCC**CGATCGCC**

ATGGTGTGTCGGAGCTAGCGGCGGCCTCAACTGCGCCGAGTACAAGAACTGGGTGAAGGCGGGCCACT
GCCTGCTACTGCTGCGCAGCTGCCTGCAGGTTTCGTCGGCCGCGAGGTGCTCTCCTCCACCGCGGCT
ACTCGCCGAGCCCCGGCCTGGGGCCCCGCGCCGTCTGCCGCGGCGGCTCACGGTGCAGCCCTCGCGCC
CGCCAGTTTCAGCCTCAGTGTGAGGTGTGCGCTGAATGGAAAAGGGAGATTTTGAGACATCATGTCAACA
GAAATGGAGATGTGCACTGGGAAACTGCCGGCCGGCCGCTGGCCCGTGGACGCCTGGGAGGTGGCCAA
GGCCTTCATGCCCGAGGACTAGCAGACAAACAAGGACCTGAGGAATGTGATGCAGTTGCTCTTTAAGT
CTCATCAACTCCTGCGATCACTTCGTGGTTGATCGAAAGAAAGTACAGAGGTAATTAATGTCGTAATG
AGATCATGCACTTTCAGAGATGAAAGTATCTTCTACGTGGCTTCGAGATTTTCAGATGAAGATCCAAAA
TTTTCTGAATGAATCAAGAATCCCAGAGATTGTGGCAGTATACTCCAGAATAGAACAGCTGTTGACG
TCTGACTGGGCTGTTACATCCCCGAGGAAGATCAGCGAGATGGGTGTGAATGTGAAATGGGAACTTACC
TGAGTGAGAGCCAAGTCAATGAAATAGAAATGCAGTTACTAAAGGAGAACTTCAAGAGATATATCTTCA
AGCAGAAGAACAAGAGGTGTTGCCTGAAGAGCTCTCAAATCGACTGGAAGTGGTGAAGGAATTTCTGAGA
ACAATGAGGATCTTAGAAATGGCCTTACAGAAGATATGCAGAAGCTAGACAGCCTCTGTCTACATCAA
AACTGGATTACAGGAACCTGGGAGACAAACACCTGACAGGAAGGCC

ACGCGTACGCGGCCGCTCGAGCAGAAACTCATCTCAGAAGAGGATCTGGCAGCAAATGATATCCTGGATT
ACAAGGATGACGACGATAAGGTTTAA



[View online »](#)

Protein Sequence: >RC206880 protein sequence
Red=Cloning site Green=Tags(s)

MVLSELAARLNCAEYKNWVKAGHCLLLLRSCLQGFGREVL SFHRGLLAAAPGLGPRAVCRGGSRCSPRA
 RQFQPQCQVCAEWKREILRHHVNRNGDVHWGNCRPGRWPDAWEVAKAFMPRGLADKQGPEECDVALLS
 L INSCDHFVVDKRVTEVIKCRNEIMHSSEMKVSSTWLRDFQMKIQNFLNEFKNIPEIVAVYSRIEQLLT
 SDWAVHIPEEDQRDGCCEMGTYL SESQVNEIEMQLLKEKLQE IYLQAEEQEVLP EELS NRLEVVKEFLR
 NNEDLRNGLTEDMQKLDLCLHQKLDLSQEPGRQTPDRKA

TRTRPLEQKLISEEDLAANDILDYKDDDDKV

Chromatograms: https://cdn.origene.com/chromatograms/mk6722_c09.zip

Restriction Sites: SgfI-MluI

Cloning Scheme:

Cloning sites used for ORF Shuttling:



ACCN: NM_144970

ORF Size: 957 bp

OTI Disclaimer: The molecular sequence of this clone aligns with the gene accession number as a point of reference only. However, individual transcript sequences of the same gene can differ through naturally occurring variations (e.g. polymorphisms), each with its own valid existence. This clone is substantially in agreement with the reference, but a complete review of all prevailing variants is recommended prior to use. [More info](#)

OTI Annotation: This clone was engineered to express the complete ORF with an expression tag. Expression varies depending on the nature of the gene.

Components: The ORF clone is ion-exchange column purified and shipped in a 2D barcoded Matrix tube containing 10ug of transfection-ready, dried plasmid DNA (reconstitute with 100 ul of water).

Reconstitution Method:

1. Centrifuge at 5,000xg for 5min.
2. Carefully open the tube and add 100ul of sterile water to dissolve the DNA.
3. Close the tube and incubate for 10 minutes at room temperature.
4. Briefly vortex the tube and then do a quick spin (less than 5000xg) to concentrate the liquid at the bottom.
5. Store the suspended plasmid at -20°C. The DNA is stable for at least one year from date of shipping when stored at -20°C.

RefSeq: [NM_144970.1](#), [NP_659407.1](#)

RefSeq Size: 4260 bp

RefSeq ORF: 960 bp

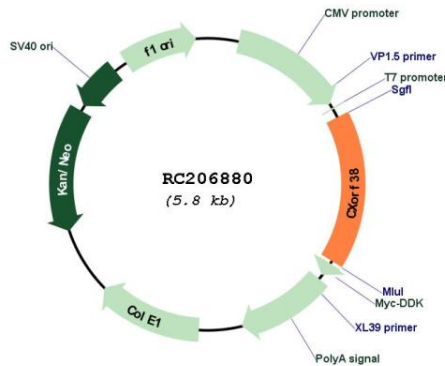
Locus ID: 159013

UniProt ID: [Q8TB03](#)

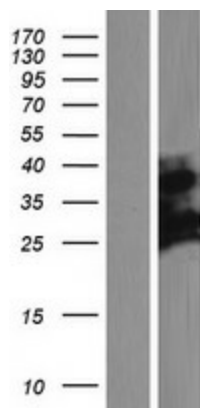
Cytogenetics: Xp11.4

MW: 36.7 kDa

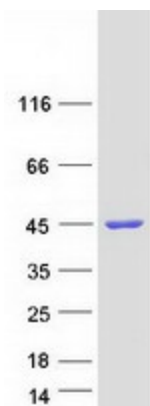
Product images:



Circular map for RC206880



Western blot validation of overexpression lysate (Cat# [LY408112]) using anti-DDK antibody (Cat# [TA50011-100]). Left: Cell lysates from untransfected HEK293T cells; Right: Cell lysates from HEK293T cells transfected with RC206880 using transfection reagent MegaTran 2.0 (Cat# [TT210002]).



Coomassie blue staining of purified CXorf38 protein (Cat# [TP306880]). The protein was produced from HEK293T cells transfected with CXorf38 cDNA clone (Cat# RC206880) using MegaTran 2.0 (Cat# [TT210002]).